

DATE January 25, 2018

COMMONWEALTH OF KENTUCKY
CITY OF LONDON
ORDINANCE NO. 2017-12

ALISON LUNDERGAN GRIMES
SECRETARY OF STATE
COMMONWEALTH OF KENTUCKY
BY Kandice Johnson

AN ORDINANCE OF VOLUNTARY ANNEXATION INTO THE CORPORATE CITY LIMITS OF THE CITY OF LONDON, KENTUCKY, AN AREA OF PROPERTY, OWNED BY THE COMMONWEALTH OF KENTUCKY, DEPARTMENT OF PARKS, LEVI JACKSON WILDERNESS ROAD STATE PARK, AND THE COMMONWEALTH OF KENTUCKY, DEPARTMENT OF TRANSPORTATION, LOCATED AT THE INTERSECTION OF KENTUCKY STATE ROUTE 229 AND KENTUCKY STATE ROUTE 1006

This matter is before the City Council of the City of London pursuant to a request by the Commonwealth of Kentucky, Department of Parks, Levi Jackson Wilderness Road State Park, and the Commonwealth of Kentucky, Department of Transportation, that the property is located at the intersection of Kentucky State Route 229 and Kentucky State Route 1006, and known as the Levi Jackson Wilderness Road State Park, be annexed into the corporate city limits of the City of London, Kentucky.

The City Council further finds that this annexation is a voluntary annexation, being considered at the request of the property owners, Levi Jackson Wilderness Road State Park and the Commonwealth of Kentucky, Department of Transportation, being the owners of the property described herein.

This property is not in any other boundary of an incorporated city, and all of these above findings are in keeping with KRS 81A.410 and KRS 81A.412 and other applicable Kentucky law. For such reasons:

BE IT ORDAINED BY THE CITY OF LONDON, KENTUCKY AS FOLLOWS:

1. The property owned by the Commonwealth of Kentucky, Department of Parks, Levi Jackson Wilderness Road State Park, and the Commonwealth of Kentucky, Department of Transportation, hereinafter more particularly described, shall be and is hereby incorporated into the City Limits of the City of London as a voluntary annexation pursuant to KRS 81A.412 and that all of the requirements of Kentucky law have been met in this voluntary annexation request.

2. The property to be annexed is more particularly described as follows:

A certain tract located at the intersection of Kentucky State Route 229 and Kentucky State Route 1006, and more particularly described as follows:

All hereinafter coordinates are referenced from Kentucky State Plane Coordinate System, South Zone, and referenced from the 1983 North American Datum. All hereinafter bearings and distances are referenced to the Kentucky State Plane Grid System.

BEGINNING at a three and one-half (3-½) inch aluminum monument (set), located in the east right-of-way line of CSX Railroad and the north right-of-way line of State Route #1006; Said monument being located in the east boundary line of the existing city limits (Ordinance #984), having a State Plane Coordinate of **1,919,635.02 feet NORTH and 2,133,280.23 feet EAST;**

Thence, leaving the east right-of-way line of CSX Railroad and meandering with the northeast right-of-way line of State Route #1006, commonly known as the Levi Jackson Mill Road, the following bearings and distances;

NORTH 83 DEGREES 26 MINUTES 15 SECONDS EAST 176.61 FEET;

A CURVE to the RIGHT with an ARC LENGTH of 213.24 FEET, a RADIUS of 144.59 FEET, and a CHORD BEARING and DISTANCE of SOUTH 54 DEGREES 18 MINUTES 45 SECONDS EAST 194.44 FEET;

SOUTH 12 DEGREES 03 MINUTES 45 SECONDS EAST 440.60 FEET;

A CURVE to the LEFT with an ARC LENGTH of 410.65 FEET, a RADIUS of 542.97 FEET, and a CHORD BEARING and DISTANCE of SOUTH 33 DEGREES 43 MINUTES 45 SECONDS EAST 400.94 FEET;
SOUTH 55 DEGREES 23 MINUTES 43 SECONDS EAST 179.67 FEET;

Thence, leaving the northeast right-of-way line of State Route #1006 and with the property boundary line of Levi Jackson Wilderness Road State Park, the following bearings and distances;

NORTH 86 DEGREES 56 MINUTES 07 SECONDS EAST 83.50 FEET;
NORTH 89 DEGREES 56 MINUTES 07 SECONDS EAST 200.00 FEET;
NORTH 88 DEGREES 56 MINUTES 07 SECONDS EAST 244.00 FEET;
SOUTH 83 DEGREES 03 MINUTES 53 SECONDS EAST 83.85 FEET to a meander corner located in the centerline of the Little Laurel River;

Thence, meandering with the centerline of the Little Laurel River, the following bearings and distances;

NORTH 29 DEGREES 06 MINUTES 08 SECONDS WEST 25.78 FEET;
NORTH 02 DEGREES 19 MINUTES 15 SECONDS EAST 79.45 FEET;
NORTH 08 DEGREES 34 MINUTES 39 SECONDS EAST 92.79 FEET;
NORTH 02 DEGREES 30 MINUTES 12 SECONDS WEST 136.12 FEET;
NORTH 40 DEGREES 59 MINUTES 52 SECONDS EAST 41.14 FEET;
NORTH 62 DEGREES 03 MINUTES 07 SECONDS EAST 76.79 FEET;
NORTH 52 DEGREES 17 MINUTES 21 SECONDS EAST 42.91 FEET;
NORTH 27 DEGREES 24 MINUTES 45 SECONDS EAST 41.28 FEET;
NORTH 01 DEGREES 19 MINUTES 26 SECONDS WEST 33.63 FEET to a meander corner located in the centerline of the Little Laurel River;

Thence, leaving the centerline of the Little Laurel River and with the property boundary line of the Levi Jackson Wilderness Road State Park, the following bearings and distances;

SOUTH 64 DEGREES 18 MINUTES 47 SECONDS EAST 573.72 FEET;
SOUTH 32 DEGREES 28 MINUTES 48 SECONDS EAST 448.00 FEET to a wood post corner;

Thence, with the property boundary line of the Levi Jackson Wilderness Road State Park, the following bearings and distances;

NORTH 59 DEGREES 36 MINUTES 22 SECONDS EAST 1,087.60 FEET;
NORTH 05 DEGREES 27 MINUTES 58 SECONDS WEST 655.40 FEET;
NORTH 88 DEGREES 51 MINUTES 51 SECONDS EAST 611.08 FEET to a meander corner located in the west right-of-way line of State Route #229;

Thence, meandering with the southwest right-of-way lines of State Route #229, the following bearings and distances;

SOUTH 48 DEGREES 48 MINUTES 54 SECONDS EAST 485.66 FEET;
A CURVE to the RIGHT with an ARC LENGTH of 96.02 FEET, a RADIUS of 522.96 FEET, and a CHORD BEARING and DISTANCE of SOUTH 43 DEGREES 33 MINUTES 18 SECONDS EAST 95.88 FEET;

NORTH 51 DEGREES 42 MINUTES 18 SECONDS EAST 15.00 FEET;
A CURVE to the RIGHT with an ARC LENGTH of 194.21 FEET, a RADIUS of 538.26 FEET, and a CHORD BEARING and DISTANCE of SOUTH 28 DEGREES 07 MINUTES 56 SECONDS EAST 193.16 FEET to a three and one-half (3-½) inch aluminum monument located in the southwest right-of-way line of State Route #229 and having a State Plane Coordinate of 1,919,205.59 feet NORTH, and 2,137,611.01 feet EAST;

Thence, crossing State Route #229 and with the Levi Jackson Wilderness Road State Park property boundary lines, the following bearings and distances;

NORTH 44 DEGREES 53 MINUTES 15 SECONDS EAST 382.36 FEET;
NORTH 43 DEGREES 54 MINUTES 01 SECONDS WEST 339.57 FEET;
SOUTH 86 DEGREES 36 MINUTES 08 SECONDS EAST 265.00 FEET;
NORTH 05 DEGREES 29 MINUTES 48 SECONDS EAST 1,549.97 FEET to a three and one-half (3-½) inch aluminum monument located in the south right-of-way line

of Conley Road, State Route #1561 and having a State Plane Coordinate of 1,921,248.31 feet NORTH, and 2,138,058.39 feet EAST.

Thence, with the south right-of-way line of State Route #1561, a CURVE to the RIGHT with an ARC LENGTH of 235.68 FEET, a RADIUS of 365.82 FEET, and a CHORD BEARING and DISTANCE of SOUTH 86 DEGREES 42 MINUTES 37 SECONDS WEST 231.63 FEET to a three and one-half (3-½) inch aluminum monument, located in the south right-of-way line of Conley Road, State Route #1561 and having a State Plane Coordinate of 1,921,235.02 feet NORTH, and 2,137,827.14 feet EAST.

Thence, crossing State Route #1561 and with the property boundary lines of the Levi Jackson Wilderness Road State Park, the following bearings and distances:
NORTH 19 DEGREES 07 MINUTES 52 SECONDS WEST 70.32 FEET;
NORTH 19 DEGREES 07 MINUTES 52 SECONDS WEST 398.53 FEET to a set

stone;
NORTH 34 DEGREES 48 MINUTES 25 SECONDS EAST 743.82 FEET;
NORTH 34 DEGREES 45 MINUTES 30 SECONDS EAST 785.54 FEET;
NORTH 01 DEGREES 49 MINUTES 51 SECONDS WEST 437.61 FEET;
NORTH 10 DEGREES 00 MINUTES 54 SECONDS EAST 408.62 FEET;
NORTH 10 DEGREES 01 MINUTES 17 SECONDS EAST 173.57 FEET;
NORTH 10 DEGREES 01 MINUTES 08 SECONDS EAST 156.26 FEET;
NORTH 10 DEGREES 00 MINUTES 51 SECONDS EAST 504.90 FEET;
NORTH 06 DEGREES 22 MINUTES 53 SECONDS EAST 415.68 FEET;
NORTH 06 DEGREES 23 MINUTES 50 SECONDS EAST 100.06 FEET;
NORTH 06 DEGREES 22 MINUTES 53 SECONDS EAST 344.74 FEET;
NORTH 55 DEGREES 37 MINUTES 31 SECONDS EAST 478.49 FEET;
NORTH 54 DEGREES 31 MINUTES 39 SECONDS EAST 593.67 FEET to an iron

pin located on top of a rocky knob, having a State Plane Coordinate of 1,926,065.68 feet NORTH, and 2,139,722.26 feet EAST;

SOUTH 70 DEGREES 43 MINUTES 09 SECONDS EAST 280.55 FEET to a sixteen (16) inch chestnut oak;
SOUTH 03 DEGREES 15 MINUTES 21 SECONDS WEST 1452.00 FEET;
SOUTH 17 DEGREES 41 MINUTES 46 SECONDS WEST 1331.97 FEET;
SOUTH 31 DEGREES 29 MINUTES 36 SECONDS WEST 127.13 FEET;
SOUTH 50 DEGREES 25 MINUTES 19 SECONDS WEST 203.00 FEET;
SOUTH 42 DEGREES 26 MINUTES 47 SECONDS WEST 474.00 FEET;
SOUTH 03 DEGREES 30 MINUTES 03 SECONDS EAST 214.90 FEET;
SOUTH 03 DEGREES 30 MINUTES 03 SECONDS EAST 634.32 FEET;
SOUTH 04 DEGREES 43 MINUTES 00 SECONDS EAST 61.64 FEET, crossing

Conley Road to a three and one-half (3-½) inch aluminum monument located in the south right-of-way line of Conley Road, State Route #1561 and having a State Plane Coordinate of 1,921,757.86 feet NORTH, and 2,139,013.87 feet EAST;

SOUTH 04 DEGREES 43 MINUTES 00 SECONDS EAST 470.61 FEET;
SOUTH 16 DEGREES 00 MINUTES 12 SECONDS WEST 168.33 FEET;
SOUTH 13 DEGREES 08 MINUTES 36 SECONDS WEST 97.53 FEET;
SOUTH 12 DEGREES 43 MINUTES 03 SECONDS WEST 132.92 FEET;
SOUTH 63 DEGREES 42 MINUTES 57 SECONDS EAST 263.24 FEET;
SOUTH 63 DEGREES 13 MINUTES 20 SECONDS EAST 399.77 FEET;
NORTH 87 DEGREES 57 MINUTES 52 SECONDS EAST 33.81 FEET;
SOUTH 56 DEGREES 06 MINUTES 40 SECONDS EAST 120.21 FEET;
SOUTH 06 DEGREES 49 MINUTES 33 SECONDS EAST 204.15 FEET;
SOUTH 22 DEGREES 20 MINUTES 25 SECONDS EAST 107.96 FEET;
SOUTH 24 DEGREES 09 MINUTES 08 SECONDS EAST 51.61 FEET;
SOUTH 57 DEGREES 42 MINUTES 56 SECONDS WEST 73.64 FEET;
SOUTH 00 DEGREES 46 MINUTES 22 SECONDS EAST 93.34 FEET;
SOUTH 02 DEGREES 44 MINUTES 27 SECONDS EAST 83.66 FEET;
SOUTH 05 DEGREES 22 MINUTES 13 SECONDS WEST 43.49 FEET;
SOUTH 12 DEGREES 45 MINUTES 49 SECONDS WEST 46.43 FEET;
SOUTH 13 DEGREES 39 MINUTES 38 SECONDS WEST 94.89 FEET;
SOUTH 04 DEGREES 22 MINUTES 55 SECONDS WEST 101.26 FEET;
SOUTH 02 DEGREES 07 MINUTES 16 SECONDS EAST 149.49 FEET;

L¹⁰
SOUTH 85 DEGREES 14 MINUTES 50 SECONDS EAST 455.27 FEET;
SOUTH 27 DEGREES 19 MINUTES 03 SECONDS EAST 97.60 FEET;
SOUTH 25 DEGREES 59 MINUTES 17 SECONDS EAST 151.35 FEET;
SOUTH 27 DEGREES 19 MINUTES 44 SECONDS EAST 212.06 FEET;
SOUTH 54 DEGREES 36 MINUTES 31 SECONDS EAST 358.96 FEET;
SOUTH 14 DEGREES 03 MINUTES 41 SECONDS EAST 466.99 FEET;
SOUTH 15 DEGREES 07 MINUTES 54 SECONDS EAST 239.27 FEET;
SOUTH 59 DEGREES 27 MINUTES 19 SECONDS EAST 360.00 FEET;
SOUTH 59 DEGREES 23 MINUTES 24 SECONDS EAST 323.66 FEET;
SOUTH 58 DEGREES 18 MINUTES 03 SECONDS EAST 341.12 FEET;
NORTH 54 DEGREES 38 MINUTES 48 SECONDS EAST 51.82 FEET;
NORTH 52 DEGREES 02 MINUTES 04 SECONDS EAST 161.86 FEET;
NORTH 68 DEGREES 02 MINUTES 31 SECONDS EAST 85.01 FEET;
SOUTH 33 DEGREES 04 MINUTES 50 SECONDS EAST 425.70 FEET;
SOUTH 80 DEGREES 16 MINUTES 50 SECONDS EAST 280.50 FEET;
NORTH 62 DEGREES 31 MINUTES 45 SECONDS EAST 181.05 FEET;
SOUTH 34 DEGREES 10 MINUTES 26 SECONDS EAST 152.45 FEET;
SOUTH 00 DEGREES 40 MINUTES 44 SECONDS EAST 95.23 FEET;
SOUTH 49 DEGREES 28 MINUTES 18 SECONDS WEST 4,202.87 FEET to a
conduit located in the northeast right-of-way line of State Route #229;
SOUTH 59 DEGREES 10 MINUTES 28 SECONDS WEST 70.38 FEET, crossing
State Route #229, to a three and one-half (3-½) inch aluminum monument located in the
southwest right-of-way line of State Route #229, and having a State Plane Coordinate of
1,914,527.41 feet NORTH, and 2,139,431.19 feet EAST.
SOUTH 49 DEGREES 33 MINUTES 14 SECONDS WEST 599.70 FEET;
SOUTH 49 DEGREES 33 MINUTES 14 SECONDS WEST 147.70 FEET;
SOUTH 49 DEGREES 33 MINUTES 14 SECONDS WEST 360.00 FEET;
SOUTH 49 DEGREES 33 MINUTES 14 SECONDS WEST 637.60 FEET;
NORTH 01 DEGREES 16 MINUTES 51 SECONDS WEST 403.22 FEET to a wood
fence post corner;
NORTH 09 DEGREES 52 MINUTES 35 SECONDS EAST 410.03 FEET to a wood
fence post corner;
NORTH 13 DEGREES 28 MINUTES 46 SECONDS EAST 930.78 FEET to a
sixteen (16) inch black oak;
NORTH 50 DEGREES 16 MINUTES 01 SECONDS WEST 176.92 FEET;
NORTH 50 DEGREES 16 MINUTES 01 SECONDS WEST 543.50 FEET to an iron
pin;
NORTH 50 DEGREES 16 MINUTES 01 SECONDS WEST 378.20 FEET;
NORTH 50 DEGREES 16 MINUTES 01 SECONDS WEST 321.80 FEET to an iron
pin;
NORTH 50 DEGREES 16 MINUTES 01 SECONDS WEST 600.00 FEET;
NORTH 50 DEGREES 16 MINUTES 01 SECONDS WEST 512.00 FEET to a three
and one-half (3-½) inch aluminum monument located on the southeast side of Jackson
Fariston Road, CR #1233B, and having a State Plane Coordinate of 1,916,726.34 feet
NORTH, and 2,136,433.99 feet EAST;
NORTH 47 DEGREES 34 MINUTES 44 SECONDS WEST 37.32 FEET, crossing
Jackson Fariston Road;
NORTH 49 DEGREES 50 MINUTES 35 SECONDS WEST 1,632.93 FEET to a two
(2) inch metal pipe;
NORTH 49 DEGREES 50 MINUTES 35 SECONDS WEST 367.00 FEET;
SOUTH 53 DEGREES 09 MINUTES 25 SECONDS WEST 159.00 FEET;
SOUTH 85 DEGREES 39 MINUTES 25 SECONDS WEST 26.00 FEET;
SOUTH 52 DEGREES 09 MINUTES 25 SECONDS WEST 77.51 FEET;
NORTH 66 DEGREES 20 MINUTES 20 SECONDS WEST 82.22 FEET, crossing
the Little Laurel River;
NORTH 05 DEGREES 09 MINUTES 40 SECONDS EAST 302.00 FEET to a wood
fence post corner located in the southwest right-of-way line of State Route #1006,
having a State Plane Coordinate of 1,918,230.15 feet NORTH, and 2,134,615.40 feet
EAST;

L¹¹⁰
Thence, with the southwest right-of-way line of State Route #1006, the following
bearings and distances;

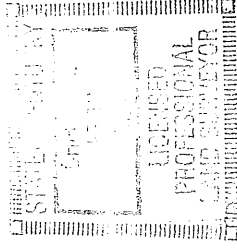
C 6
NORTH 55 DEGREES 22 MINUTES 39 SECONDS WEST 876.37 FEET;
A CURVE to the RIGHT with an ARC LENGTH of 456.03 FEET, a RADIUS of 602.97 FEET, and a CHORD BEARING and DISTANCE of NORTH 33 DEGREES 43 MINUTES 45 SECONDS WEST 445.24 FEET;
NORTH 12 DEGREES 03 MINUTES 45 SECONDS WEST 440.60 FEET;
A CURVE to the LEFT with an ARC LENGTH of 124.75 FEET, a RADIUS of 84.59 FEET, and a CHORD BEARING and DISTANCE of NORTH 54 DEGREES 18 MINUTES 45 SECONDS WEST 113.75 FEET;
SOUTH 83 DEGREES 26 MINUTES 15 SECONDS WEST 622.96 FEET to an iron pin;
SOUTH 84 DEGREES 03 MINUTES 49 SECONDS WEST 150.16 FEET;
SOUTH 05 DEGREES 57 MINUTES 44 SECONDS EAST 10.00 FEET to an iron pin;
SOUTH 84 DEGREES 02 MINUTES 16 SECONDS WEST 56.80 FEET;
NORTH 22 DEGREES 55 MINUTES 07 SECONDS WEST 4.08 FEET to a right-of-way corner located in the boundary line of the existing city limits (Ordinance #984);

Thence, with the existing city limits boundary lines, the following bearings and distances;

NORTH 35 DEGREES 45 MINUTES 58 SECONDS EAST 24.53 FEET to a three and one-half (3-½) inch aluminum monument located on the south-side of State Route #1006 having a State Plane Coordinate of 1,919,516.69 feet NORTH, and 2,132,651.60 feet EAST;
NORTH 84 DEGREES 05 MINUTES 53 SECONDS EAST 630.88 FEET to a three and one-half (3-½) inch aluminum monument located on the south side of State Route #1006 having a State Plane Coordinate of 1,919,581.56 feet NORTH, and 2,133,279.14 feet EAST;

NORTH 01 DEGREES 09 MINUTES 55 SECONDS EAST 53.47 FEET, crossing State Route #1006 to the corner of the BEGINNING, containing 719.28 ACRES. This city annexation description was prepared from survey plat maps, highway right-of-way plans, record deeds, GPS field data and information provided by the City of London, Kentucky, dated August 25, 2017, by Kentucky Surveys, Inc., Charles J. Felts, Licensed Professional Surveyor #2581.

Charles J. Felts



3. The London Planning Commission has recognized that this property sought to be annexed should also be zoned (G) Governmental District.
4. This ordinance and the various parts thereof are hereby declared to be severable. If any section, clause, sentence, or phrase of the Ordinance is held to be invalid or unconstitutional by any court of competent jurisdiction, then said holding shall

not affect the validity of the ordinance as a whole, or any portion thereof other than the section so declared to be unconstitutional or invalid.

5. This Ordinance shall be effective immediately upon publication in accordance with the applicable provisions of Kentucky law. Any Ordinances or part of Ordinances in conflict herewith are hereby repealed.


TROY RUDDER, MAYOR

ATTEST: Carolyn Adams
CAROLYN ADAMS, CITY CLERK

FIRST READING November 6, 2017
SECOND READING December 4, 2017
PUBLICATION: December 8, 2017

CERTIFICATION OF CITY CLERK

I certify that I am the duly qualified City Clerk of the City of London, Kentucky and the foregoing Ordinance No. 2017-12 is a true, correct and complete copy duly adopted by the City Council at a duly convened meeting held on November 6, 2017 and December 4, 2017, all as appears in the official records of said City.

WITNESS my hand and Seal of said City, this the 5th day of December, 2017.

Carolyn Adams

CAROLYN ADAMS, LONDON CITY CLERK

SEAL



TOURISM, ARTS AND HERITAGE CABINET

MATTHEW G. BEVIN
GOVERNOR

OFFICE OF THE SECRETARY
100 AIRPORT ROAD
FRANKFORT, KENTUCKY 40601
502-564-4270 – OFFICE
502-564-1512 - FAX

DON PARKINSON
SECRETARY

JENEAN HAMPTON
LT. GOVERNOR

REGINA STIVERS
DEPUTY SECRETARY

March 31, 2017

VIA E-MAIL AND U. S. POST
Mayor Troy Rudder
501 South Main Street
London, Kentucky 40741
TroyRudder@LondonKY.gov

Mayor Rudder and Members of the London City Council:

As Secretary of the Tourism, Arts, and Heritage Cabinet, I would like to express my support for London's proposed annexation of the Levi Jackson Wilderness Road State Park. The park is one of the Commonwealth's premier parks, as well as one of Kentucky's oldest state parks, with the land being donated to the Kentucky Department of Parks in 1931.

With a world over 8.5 miles of hiking trails, 10 miles of mountain biking trails, a 136 site campground nestled in open woodland, a grocery store, an activities building, and the awe-inspiring natural landscapes of Southeastern Kentucky, there is something for everyone at Levi Jackson Wilderness Road State Park. It is a modern campground with a wonderful sense of immersion into nature that has proven to be an immense asset to the region, loved by many, residents and visitors alike.

I encourage London to pursue the annexation of the Levi Jackson Wilderness Road State Park into the city's boundaries and further strengthen the community bond between the Park and the local citizens. It will make a wonderful addition to a thriving city, both of which represent the best that Kentucky has to offer.

Sincerely,

Don Parkinson
Secretary
Tourism, Arts, and, Heritage Cabinet

ADDITIONAL DOCUMENTS
and
OVERSIZE MAP

INCLUDED WITH SUBMISSION.

To research the filing, contact the
Office of Secretary of State.