

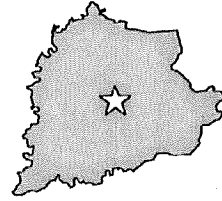


Katelin McPeek
City Clerk

City Clerk's Office

London City Hall
501 South Main Street
London, Kentucky 40741

(606) 864-4169 katelin.mcpeek@londonky.gov



**CETIFICATION: KRS 81A.470 FILINGS
EXIT 29 (CORBIN) & G&M OIL COMPANY, INC DE-ANNEXATION**

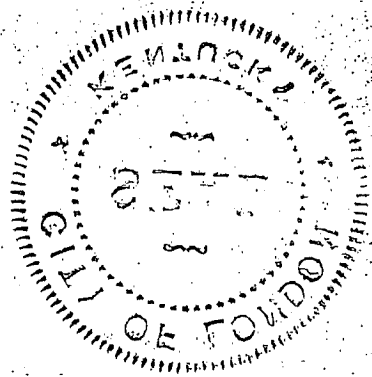
I certify am the duly qualified City Clerk of the City of London, Kentucky, and the following four textual pages of Ordinance No. 2024-01 dated February 5, 2024 is a true, correct and complete copy duly adopted by the City of London City Council as a final annexation ordinance at a duly convened meeting held on February 5, 2024 all as appears in the official records of said City.

WITNESS, my hand and (Seal or the Seal of said City) this 25th day of November, 2024.

Katelin McPeek, City Clerk of City of
London, Kentucky

RECEIVED AND FILED
DATE December 30, 2024

MICHAEL G. ADAMS
SECRETARY OF STATE
COMMONWEALTH OF KENTUCKY
BY [Signature]



Upper part

6/10/1914

Upper part of the letter is very faint and illegible. The text appears to be a letterhead or a short paragraph.

Upper part of the letter is very faint and illegible. The text appears to be a letterhead or a short paragraph.

Upper part of the letter is very faint and illegible. The text appears to be a letterhead or a short paragraph.

Upper part of the letter is very faint and illegible. The text appears to be a letterhead or a short paragraph.

Upper part of the letter is very faint and illegible. The text appears to be a letterhead or a short paragraph.

Upper part of the letter is very faint and illegible. The text appears to be a letterhead or a short paragraph.

**COMMONWEALTH OF KENTUCKY
CITY OF LONDON
ORDINANCE NO. 2024-01**

**AN ORDINANCE FINALLY REDUCING and STRIKING THE BOUNDARIES OF THE
CITY OF LONDON, KENTUCKY AND REPEALING ORDINANCES 2020-10 and
2020-17 IN THEIR ENTIRETY**

WHEREAS the City Council of the City of London, Kentucky has decided to strike and remove an area or territory of property and reduce the boundaries of the City of London, Kentucky, by repealing the annexation of a certain portion of property being generally described (but more particularly described herein) as an area south of Interstate #75 ("I-75"), Exit #38, following I-75 to Exit #29 (near the City of Corbin) and including the property known as the G&M Oil Company, Inc. ("G&M"). (A more detailed and complete description of the entirety of this property is given below.) This is the same property that was annexed by the City of London in Ordinances 2020-10 and 2020-17.

WHEREAS, the City of London, Kentucky has determined the following:

FINDINGS OF FACT

The City Counsel of the City of London, Kentucky, makes the following Findings of Fact:

1. The City of London held readings of a summary of Ordinance No. 2023-39, entitled "An Ordinance of Intent to Reduce and Strike the Boundaries of the City of London, Kentucky and Repealing Ordinances 2020-10 and 2020-17 in their Entirety" on October 13 and November 6 and published the same on November 15, 2023 in the *Sentinel-Echo*.
2. Notice was given, certified mail to the Laurel County Judge Executive of the City of London's Intent to strike the uninhabited area described in the Ordinance together with a copy of Ordinance No. 2023-39 by the City Clerk, said letter being dated November 9, 2023 and delivered on November 17, 2023. All of this in compliance with KRS 81A.440(2)(a) and (b).
3. Since that date of November 17, 2023, no Ordinance objecting to the striking and reduction of the City boundaries has been received from either the Laurel County Judge Executive or the Laurel County Fiscal Court and more than thirty (30) days has passed.

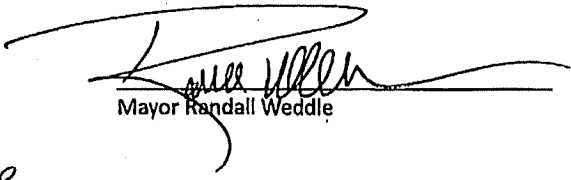
4. At the time the annexation of the property described herein started, Kentucky law prevented any city to annex in more than two (2) counties; for such reasons, the City of Corbin ("Corbin") had not annexed any real property in Laurel County, having annexed property previously in Knox and Whitley Counties; a subsequent annexation into Laurel County would have been annexation into three (3) counties.
5. There had been a lack of commercial development near I-75, Exit #29; the City of London ("London") was requested to annex property owned by G&M by an Irrevocable Request for Annexation.
6. Subsequently, the City of London read and published City of London Ordinance No. 2020-10 which was an intent to annex a portion of I-75, a portion of Highway 25E, a portion of Kentucky Route 770, and private property owned by G&M Oil; said Ordinance was read on August 12, September 10 and published on September 16, 2020.
7. In keeping with Kentucky law, the City of London later read and published City of London Ordinance No. 2020-17 which was an Ordinance annexing the same areas of property as described in Ordinance No 2020-10; Ordinance No. 2020-17 was read on December 28, 2020 and December 30, 2020 and published on January 6, 2021.
8. Filings were made with the Kentucky Secretary of State and later, the Secretary of State notified the City of London that the property was correctly lodged and filed in that Office and the annexation was final and complete.
9. A civil action was filed in the Laurel Circuit Court by the City of Corbin, styled *City of Corbin, Ky., et al., vs. City of London, Ky.*, Civil Action No. 20-CI-00662. The decision of the Laurel Circuit Court in favor of the City of London was appealed to the Kentucky Court of Appeals and discretionary review was sought and denied by the Kentucky Supreme Court. The litigation was remanded to the Laurel Circuit Court.
10. The City Council of the City of London determined that it wants to put an end to the litigation between the two cities in view of the changes in Kentucky law that have occurred since the beginning of this annexation process and it is more feasible and legally possible for the City of Corbin to annex the G&M property in Laurel County.

11. This property is uninhabited and now the City of London so finds and further finds that this area of property should cease to be a part of the City of London.

THEREFORE, BE IT ORDAINED AS FOLLOWS:

1. Pursuant to KRS 81A.440(2), the City of London hereby strikes the territory described in London City Ordinances 2020-10 and 2020-17, from its boundaries.
2. The boundaries of the uninhabited territory is the same description of property in London City Ordinances 2020-10, 2020-17 and 2023-39, and the same description is attached hereto as Exhibit A, and incorporated herein as if copied in its entirety herein.
3. The City of London by striking this uninhabited territory from its boundaries, declares that it is no longer a part of the City of London, Kentucky. A map of the area to be stricken is attached hereto and identified herein as Exhibit B, and incorporated herein as a rendition of the survey description contained in Exhibit A.
4. Because no such County Ordinance objecting to the intent to strike the territory from the City of London, was received within thirty (30) days of the notification as herein stated, by statute, the same is considered the County's acceptance of the City of London's decision to strike the territory.
5. Therefore, this City Council enacts this Ordinance finally striking the territory described herein and upon the publication of this Ordinance, the territory shall cease to be a part of the City of London for all purposes.
6. This Ordinance finally Striking this Territory and the various parts herein are severable. If any clause, section, sentence or phrase of this Ordinance is held to be invalid or unconstitutional by any courts of competent jurisdiction, then said holding shall not affect the validity of the Ordinance as a whole, or any portion thereof other than the section so declared to be unconstitutional or invalid.
7. This Ordinance finally striking the territory and reduce the boundaries of the City of London as described herein and the repeal of City Ordinances 2020-10 and 2020-17 shall be effective upon publication of this Ordinance.

This the 5th day of February, 2024.



Mayor Randall Weddle

Attest: 
City Clerk Katelin McPeck

First Reading Date: JANUARY 2, 2024 . Second Reading Date: FEBRUARY 5, 2024

Publication Date: NOVEMBER 20, 2024

A motion to approve the aforementioned Ordinance was made by Councilperson Holly Little, and seconded by Councilperson Stacy Benge, on **First Reading** on **January 2, 2024** at a duly called and noticed meeting of the City Council. The following Members of the City Council voted in favor of such Ordinance: Councilperson Donnie Philpot, Councilperson Holly Little, Councilperson Stacy Benge, Councilperson Kip Jervis and Councilperson Kelly Greene, and the following Members of the City Council, if any, voted against said Ordinance: Councilperson Justin Young.

A motion to approve the aforementioned Ordinance was made by Councilperson Holly Little, and seconded by Councilperson Kip Jervis, on **Second Reading** on **February 5, 2024** at a duly called and noticed meeting of the City Council. The following Members of the City Council voted in favor of such Ordinance: Councilperson Donnie Philpot, Councilperson Holly Little, Councilperson Justin Young, Councilperson Stacy Benge, Councilperson Kip Jervis and Councilperson Kelly Greene, and the following Members of the City Council, if any, voted against said Ordinance: none.

**METES AND BOUNDS DESCRIPTION FOR
CITY OF LONDON, KY ANNEXATION
ORDINANCE NO. 2024-01**

(WITH SURVEYOR SIGNATURE AND STAMP)

All hereinafter coordinates are referenced from Kentucky State Plane Coordinate System, South Zone, and referenced from the 1983 North American Datum. All hereinafter bearings and distances are referenced to the Kentucky State Plane Grid System.

BEGINNING at a five-eighths (5/8) inch iron pin with aluminum cap located in the east right-of-way line of Interstate Route #75, located 0.56 mile south from the approximate intersection of Interstate Route 75 and State Route #192, having a State Plane Coordinate of 1,924,650.64 NORTH and 2,121,375.97 EAST;

Thence, meandering with the east right-of-way lines of Interstate Route 75, the following bearings and distances;

SOUTH 05 DEGREES 03 MINUTES 16 SECONDS EAST 971.95 FEET; (L1)
 SOUTH 06 DEGREES 08 MINUTES 09 SECONDS EAST 845.43 FEET; (L2)
 SOUTH 08 DEGREES 38 MINUTES 13 SECONDS EAST 494.43 FEET; (L3)
 SOUTH 02 DEGREES 55 MINUTES 16 SECONDS EAST 998.32 FEET; (L4)
 SOUTH 05 DEGREES 32 MINUTES 58 SECONDS EAST 390.64 FEET; (L5)
 SOUTH 05 DEGREES 48 MINUTES 02 SECONDS EAST 809.53 FEET; (L6)
 SOUTH 04 DEGREES 35 MINUTES 20 SECONDS EAST 292.71 FEET; (L7)
 SOUTH 04 DEGREES 29 MINUTES 32 SECONDS EAST 304.73 FEET; (L8) crossing
 State Route #363, to a right-of-way monument located in the east right-of-way line of Interstate Route #75, having a State Plane Coordinate of 1,919,566.29 NORTH and 2,121,843.97 EAST;

Thence, continuing to meander with the east right-of-way lines of Interstate Route #75, the following bearings and distances;

SOUTH 04 DEGREES 04 MINUTES 32 SECONDS WEST 202.75 FEET; (L9)
 SOUTH 23 DEGREES 20 MINUTES 39 SECONDS EAST 108.35 FEET; (L10)
 SOUTH 05 DEGREES 07 MINUTES 42 SECONDS EAST 765.45 FEET; (L11)
 SOUTH 02 DEGREES 41 MINUTES 38 SECONDS EAST 1,140.14 FEET; (L12)
 SOUTH 03 DEGREES 09 MINUTES 12 SECONDS EAST 1,804.42 FEET; (L13)
 SOUTH 07 DEGREES 25 MINUTES 51 SECONDS WEST 296.66 FEET; (L14)
 SOUTH 13 DEGREES 45 MINUTES 56 SECONDS EAST 359.32 FEET; (L15)
 SOUTH 04 DEGREES 28 MINUTES 31 SECONDS EAST 147.73 FEET; (L16)
 SOUTH 02 DEGREES 12 MINUTES 54 SECONDS WEST 199.05 FEET; (L17)
 SOUTH 07 DEGREES 44 MINUTES 37 SECONDS EAST 514.34 FEET; (L18)
 SOUTH 01 DEGREES 25 MINUTES 41 SECONDS EAST 300.47 FEET; (L19)
 SOUTH 16 DEGREES 34 MINUTES 44 SECONDS EAST 110.03 FEET; (L20)
 SOUTH 06 DEGREES 38 MINUTES 31 SECONDS WEST 370.81 FEET; (L21)
 SOUTH 02 DEGREES 37 MINUTES 43 SECONDS EAST 507.47 FEET; (L22)
 SOUTH 03 DEGREES 58 MINUTES 16 SECONDS EAST 267.81 FEET; (L23)
 SOUTH 05 DEGREES 34 MINUTES 34 SECONDS EAST 466.14 FEET; (L24)
 SOUTH 07 DEGREES 27 MINUTES 02 SECONDS EAST 190.78 FEET; (L25)
 SOUTH 14 DEGREES 30 MINUTES 26 SECONDS EAST 461.77 FEET; (L26)
 SOUTH 01 DEGREES 27 MINUTES 04 SECONDS WEST 301.53 FEET; (L27)
 SOUTH 07 DEGREES 59 MINUTES 32 SECONDS EAST 590.11 FEET; (L28)
 SOUTH 04 DEGREES 35 MINUTES 01 SECONDS EAST 627.71 FEET; (L29)
 SOUTH 10 DEGREES 49 MINUTES 28 SECONDS EAST 274.36 FEET; (L30)
 SOUTH 03 DEGREES 39 MINUTES 33 SECONDS EAST 348.95 FEET; (L31)
 SOUTH 02 DEGREES 07 MINUTES 29 SECONDS WEST 399.99 FEET; (L32)
 SOUTH 01 DEGREES 45 MINUTES 35 SECONDS WEST 230.09 FEET; (L33)
 SOUTH 08 DEGREES 01 MINUTES 10 SECONDS EAST 360.42 FEET; (L34)
 SOUTH 30 DEGREES 00 MINUTES 51 SECONDS WEST 166.19 FEET; (L35)
 SOUTH 04 DEGREES 09 MINUTES 54 SECONDS WEST 342.69 FEET; (L36)
 SOUTH 02 DEGREES 37 MINUTES 46 SECONDS WEST 305.37 FEET; (L37)
 SOUTH 00 DEGREES 39 MINUTES 28 SECONDS WEST 500.04 FEET; (L38)
 SOUTH 06 DEGREES 45 MINUTES 52 SECONDS WEST 303.95 FEET; (L39)
 SOUTH 03 DEGREES 09 MINUTES 13 SECONDS WEST 1,422.47 FEET; (L40)
 SOUTH 05 DEGREES 29 MINUTES 46 SECONDS WEST 71.66 FEET; (L41)
 SOUTH 02 DEGREES 33 MINUTES 00 SECONDS WEST 197.25 FEET; (L42)
 SOUTH 00 DEGREES 37 MINUTES 17 SECONDS EAST 276.80 FEET; (L43)
 SOUTH 02 DEGREES 42 MINUTES 14 SECONDS EAST 320.26 FEET; (L44)
 SOUTH 05 DEGREES 48 MINUTES 23 SECONDS EAST 178.85 FEET; (L45)

SOUTH 12 DEGREES 57 MINUTES 04 SECONDS EAST 549.77 FEET (L46) to a three and one-quarter (3.25) inch aluminum monument stamped "City of London Corporate Limits" located in the east right-of-way line of Interstate Route #75, having a State Plane Coordinate of 1,903,706.71 NORTH and 2,122,566.25 EAST;

Thence, continuing to meander with the east right-of-way lines of Interstate Route #75, the following bearings and distances;

SOUTH 42 DEGREES 46 MINUTES 42 SECONDS EAST 2,008.08 FEET; (L47)
SOUTH 44 DEGREES 38 MINUTES 40 SECONDS WEST 786.07 FEET (L48) crossing the Little Laurel River;
SOUTH 43 DEGREES 27 MINUTES 52 SECONDS WEST 468.05 FEET; (L49)
SOUTH 68 DEGREES 08 MINUTES 18 SECONDS WEST 198.93 FEET (L50) to a corner located in the east right-of-way line of Interstate Route #75;
SOUTH 01 DEGREES 13 MINUTES 24 SECONDS WEST 122.00 FEET; (L51)
SOUTH 20 DEGREES 30 MINUTES 48 SECONDS WEST 211.90 FEET; (L52)
SOUTH 02 DEGREES 18 MINUTES 51 SECONDS EAST 601.79 FEET; (L53)
SOUTH 01 DEGREES 43 MINUTES 24 SECONDS WEST 1,300.28 FEET; (L54)
SOUTH 00 DEGREES 33 MINUTES 48 SECONDS WEST 644.34 FEET; (L55)
SOUTH 03 DEGREES 48 MINUTES 37 SECONDS WEST 555.39 FEET; (L56)
SOUTH 07 DEGREES 08 MINUTES 55 SECONDS WEST 251.50 FEET; (L57)
SOUTH 12 DEGREES 27 MINUTES 36 SECONDS EAST 101.42 FEET; (L58)
SOUTH 01 DEGREES 27 MINUTES 12 SECONDS WEST 552.00 FEET; (L59)
SOUTH 04 DEGREES 47 MINUTES 11 SECONDS EAST 601.69 FEET; (L60)
SOUTH 16 DEGREES 56 MINUTES 02 SECONDS WEST 426.42 FEET; (L61)
SOUTH 01 DEGREES 20 MINUTES 40 SECONDS WEST 514.42 FEET; (L62)
SOUTH 12 DEGREES 30 MINUTES 44 SECONDS WEST 507.71 FEET; (L63)
SOUTH 17 DEGREES 21 MINUTES 02 SECONDS WEST 651.80 FEET; (L64)
SOUTH 17 DEGREES 06 MINUTES 37 SECONDS WEST 90.17 FEET, (L65) crossing State Route #552, to a right-of-way monument located in the east right-of-way line of Interstate Route #75, having a State Plane Coordinate of 1,894,213.67 NORTH and 2,122,295.80 EAST;

Thence, continuing to meander with the east right-of-way lines of Interstate Route #75, the following bearings and distances;

SOUTH 13 DEGREES 49 MINUTES 00 SECONDS WEST 971.56 FEET; (L66)
SOUTH 13 DEGREES 24 MINUTES 11 SECONDS WEST 628.71 FEET; (L67)
SOUTH 08 DEGREES 59 MINUTES 24 SECONDS EAST 148.01 FEET; (L68)
SOUTH 23 DEGREES 49 MINUTES 53 SECONDS WEST 301.41 FEET; (L69)
SOUTH 13 DEGREES 42 MINUTES 33 SECONDS WEST 293.42 FEET; (L70)
SOUTH 09 DEGREES 22 MINUTES 35 SECONDS WEST 416.65 FEET; (L71)
SOUTH 28 DEGREES 54 MINUTES 10 SECONDS WEST 161.82 FEET; (L72)
SOUTH 11 DEGREES 09 MINUTES 15 SECONDS WEST 490.15 FEET; (L73)
SOUTH 32 DEGREES 46 MINUTES 48 SECONDS WEST 105.62 FEET; (L74)
SOUTH 14 DEGREES 02 MINUTES 01 SECONDS WEST 247.72 FEET; (L75)
SOUTH 01 DEGREES 52 MINUTES 37 SECONDS WEST 100.11 FEET; (L76)
SOUTH 20 DEGREES 26 MINUTES 32 SECONDS WEST 202.55 FEET; (L77)
SOUTH 04 DEGREES 28 MINUTES 42 SECONDS EAST 168.95 FEET; (L78)
SOUTH 38 DEGREES 33 MINUTES 05 SECONDS WEST 153.65 FEET; (L79)
SOUTH 10 DEGREES 16 MINUTES 47 SECONDS WEST 810.81 FEET; (L80)
SOUTH 36 DEGREES 40 MINUTES 26 SECONDS WEST 108.03 FEET; (L81)
SOUTH 14 DEGREES 02 MINUTES 17 SECONDS WEST 304.16 FEET; (L82)
SOUTH 20 DEGREES 23 MINUTES 20 SECONDS WEST 101.90 FEET; (L83)
SOUTH 13 DEGREES 59 MINUTES 03 SECONDS WEST 693.42 FEET; (L84)
SOUTH 08 DEGREES 50 MINUTES 14 SECONDS WEST 237.73 FEET (L85) to a corner located at the intersection of the east right-of-way line of Interstate Route #75 and the approximate centerline of Laurel River, having a State Plane Coordinate of 1,887,827.65 NORTH and 2,120,712.51 EAST;

Thence, continuing to meander with the east right-of-way lines of Interstate Route #75, the following bearings and distances;

SOUTH 14 DEGREES 23 MINUTES 22 SECONDS WEST 162.09 FEET; (L86)
SOUTH 22 DEGREES 46 MINUTES 31 SECONDS WEST 151.36 FEET; (L87)
SOUTH 14 DEGREES 11 MINUTES 50 SECONDS WEST 658.08 FEET; (L88)

SOUTH 08 DEGREES 32 MINUTES 10 SECONDS WEST 295.43 FEET; (L89)
 SOUTH 13 DEGREES 54 MINUTES 00 SECONDS WEST 503.21 FEET; (L90)
 SOUTH 05 DEGREES 43 MINUTES 33 SECONDS WEST 396.28 FEET; (L91)
 SOUTH 07 DEGREES 31 MINUTES 24 SECONDS WEST 442.04 FEET; (L92)
 SOUTH 08 DEGREES 34 MINUTES 51 SECONDS WEST 3051.75 FEET; (L93)
 SOUTH 01 DEGREES 58 MINUTES 02 SECONDS EAST 305.10 FEET; (L94)
 SOUTH 14 DEGREES 50 MINUTES 32 SECONDS WEST 301.85 FEET; (L95)
 SOUTH 07 DEGREES 53 MINUTES 46 SECONDS WEST 804.24 FEET; (L96) to a three
 and one-quarter (3.25) inch aluminum monument stamped "City of London Corporate Limits"
 located in the east right-of-way line of Interstate Route #75 and being the beginning corner of the
 proposed annexation TRACT #2, having a State Plane Coordinate of 1,880,869.04 NORTH and
 2,119,557.42 EAST;

Thence, continuing to meander with the east right-of-way lines of Interstate Route #75, and with
 the west boundary lines of the proposed annexation TRACT #2, the following bearings and
 distances;

SOUTH 08 DEGREES 55 MINUTES 53 SECONDS WEST 748.52 FEET; (L97)
 SOUTH 03 DEGREES 48 MINUTES 20 SECONDS EAST 384.38 FEET; (L98)
 SOUTH 13 DEGREES 13 MINUTES 06 SECONDS EAST 308.83 FEET; (L99)
 SOUTH 05 DEGREES 11 MINUTES 00 SECONDS EAST 287.66 FEET; (L100)
 SOUTH 10 DEGREES 09 MINUTES 29 SECONDS EAST 159.18 FEET; (L101)
 SOUTH 21 DEGREES 40 MINUTES 55 SECONDS EAST 58.63 FEET; (L102)
 SOUTH 48 DEGREES 44 MINUTES 01 SECONDS EAST 132.17 FEET (L103) to a three
 and one-quarter (3.25) inch aluminum monument stamped "City of London Corporate Limits"
 located at the intersection of the east right-of-way line of Interstate Route 75 and the north right-
 of-way line of West Cumberland Gap Parkway, having a State Plane Coordinate of 1,878,860.59
 NORTH and 2,119,712.41 EAST;

Thence, meandering with the north right-of-way lines of West Cumberland Gap Parkway, the
 following bearings and distances;

SOUTH 74 DEGREES 17 MINUTES 40 SECONDS EAST 234.45 FEET; (L104)
 SOUTH 71 DEGREES 56 MINUTES 32 SECONDS EAST 187.58 FEET; (L105)
 NORTH 47 DEGREES 46 MINUTES 13 SECONDS EAST 53.81 FEET; (L106)

Thence, leaving the proposed annexation TRACT #2 and continuing to meander with the north
 right-of-way lines of West Cumberland Gap Parkway, the following bearings and distances;

SOUTH 77 DEGREES 53 MINUTES 04 SECONDS EAST 143.35 FEET; (L107)
 SOUTH 54 DEGREES 06 MINUTES 28 SECONDS EAST 93.75 FEET; (L108)
 SOUTH 83 DEGREES 27 MINUTES 45 SECONDS EAST 82.95 FEET; (L109)
 SOUTH 75 DEGREES 35 MINUTES 49 SECONDS EAST 363.20 FEET; (L110)
 SOUTH 74 DEGREES 45 MINUTES 03 SECONDS EAST 631.98 FEET; (L111)
 SOUTH 77 DEGREES 16 MINUTES 42 SECONDS EAST 136.73 FEET; (L112)
 SOUTH 68 DEGREES 44 MINUTES 03 SECONDS EAST 222.22 FEET; (L113)
 SOUTH 63 DEGREES 26 MINUTES 54 SECONDS EAST 330.67 FEET; (L114)
 SOUTH 68 DEGREES 42 MINUTES 55 SECONDS EAST 2064.65 FEET; (L115)
 SOUTH 76 DEGREES 49 MINUTES 43 SECONDS EAST 134.63 FEET; (L116)
 SOUTH 57 DEGREES 57 MINUTES 48 SECONDS EAST 115.44 FEET; (L117)
 SOUTH 68 DEGREES 56 MINUTES 37 SECONDS EAST 516.56 FEET; (L118)
 SOUTH 76 DEGREES 32 MINUTES 56 SECONDS EAST 248.91 FEET, (L119) crossing
 State Route #3431, to a corner located in the north right-of-way line of West Cumberland Gap
 Parkway;
 SOUTH 69 DEGREES 31 MINUTES 30 SECONDS EAST 467.08 FEET; (L120)
 SOUTH 59 DEGREES 11 MINUTES 04 SECONDS EAST 301.91 FEET; (L121)
 SOUTH 55 DEGREES 29 MINUTES 13 SECONDS EAST 348.69 FEET; (L122)
 SOUTH 43 DEGREES 18 MINUTES 43 SECONDS EAST 378.19 FEET; (L123)
 SOUTH 48 DEGREES 17 MINUTES 17 SECONDS EAST 292.55 FEET; (L124)
 SOUTH 39 DEGREES 59 MINUTES 33 SECONDS EAST 89.84 FEET; (L125)
 SOUTH 39 DEGREES 17 MINUTES 39 SECONDS EAST 579.90 FEET; (L126)
 SOUTH 51 DEGREES 25 MINUTES 30 SECONDS EAST 299.74 FEET, (L127) crossing
 U. S. Route #25, to a three and one-quarter (3.25) inch aluminum monument stamped "City of
 London Corporate Limits" located in the north right-of-way line of West Cumberland Gap
 Parkway, having a State Plane Coordinate of 1,875,390.71 NORTH and 2,127,050.82 EAST;

Thence, crossing East Cumberland Gap Parkway, **SOUTH 65 DEGREES 12 MINUTES 32 SECONDS WEST 374.19 FEET (L128)** to a three and one-quarter (3.25) inch aluminum monument stamped "City of London Corporate Limits" located in the south right-of-way line of East Cumberland Gap Parkway, having a State Plane Coordinate of **1,875,233.81 NORTH** and **2,126,711.12 EAST**;

Thence, meandering with the south right-of-way lines of East Cumberland Gap Parkway, the following bearings and distances;
NORTH 39 DEGREES 23 MINUTES 24 SECONDS WEST 294.76 FEET, (L129) crossing U.S. Route #25 to a corner located in the south right-of-way line of West Cumberland Gap Parkway;
NORTH 32 DEGREES 43 MINUTES 06 SECONDS WEST 119.01 FEET; (L130)
NORTH 46 DEGREES 08 MINUTES 22 SECONDS WEST 367.15 FEET; (L131)
NORTH 40 DEGREES 57 MINUTES 29 SECONDS WEST 529.70 FEET; (L132)
NORTH 49 DEGREES 25 MINUTES 52 SECONDS WEST 521.95 FEET; (L133)
NORTH 71 DEGREES 55 MINUTES 12 SECONDS WEST 241.64 FEET; (L134)
NORTH 65 DEGREES 42 MINUTES 08 SECONDS WEST 571.91 FEET, (L135) crossing State Route #3431, to a corner located in the south right-of-way line of West Cumberland Gap Parkway;
NORTH 66 DEGREES 47 MINUTES 22 SECONDS WEST 533.01 FEET; (L136)
NORTH 76 DEGREES 13 MINUTES 42 SECONDS WEST 239.55 FEET; (L137)
NORTH 60 DEGREES 38 MINUTES 43 SECONDS WEST 171.30 FEET; (L138)
NORTH 69 DEGREES 03 MINUTES 46 SECONDS WEST 971.36 FEET; (L139)
NORTH 66 DEGREES 36 MINUTES 54 SECONDS WEST 211.15 FEET; (L140)
NORTH 69 DEGREES 14 MINUTES 10 SECONDS WEST 495.31 FEET (L141) to a fence post corner located in the south right-of-way line of West Cumberland Gap Parkway, having a State Plane Coordinate of **1,877,823.52 NORTH** and **2,122,264.33 EAST**;

Thence, continuing to meander with the south right-of-way lines of West Cumberland Gap Parkway, the following bearings and distances;
NORTH 68 DEGREES 13 MINUTES 18 SECONDS WEST 465.68 FEET; (L142)
NORTH 70 DEGREES 48 MINUTES 27 SECONDS WEST 355.31 FEET; (L143)
NORTH 72 DEGREES 44 MINUTES 27 SECONDS WEST 168.38 FEET; (L144)
NORTH 62 DEGREES 05 MINUTES 40 SECONDS WEST 225.34 FEET; (L145)
NORTH 74 DEGREES 11 MINUTES 29 SECONDS WEST 580.95 FEET; (L146)
NORTH 80 DEGREES 15 MINUTES 20 SECONDS WEST 278.91 FEET; (L147)
NORTH 83 DEGREES 55 MINUTES 57 SECONDS WEST 120.13 FEET; (L148)
NORTH 75 DEGREES 39 MINUTES 49 SECONDS WEST 379.92 FEET; (L149)
NORTH 76 DEGREES 20 MINUTES 39 SECONDS WEST 191.24 FEET (L150) to a fence post corner located at the intersection of the south right-of-way line of West Cumberland Gap Parkway and the east right-of-way line of Interstate Route #75, having a State Plane Coordinate of **1,878,625.92 NORTH** and **2,119,629.14 EAST**;

Thence, meandering with the east right-of-way lines of Interstate Route #75, the following bearings and distances;
SOUTH 27 DEGREES 39 MINUTES 56 SECONDS WEST 208.95 FEET; (L151)
SOUTH 39 DEGREES 05 MINUTES 05 SECONDS WEST 173.02 FEET; (L152)
SOUTH 29 DEGREES 21 MINUTES 26 SECONDS WEST 215.08 FEET; (L153)
SOUTH 09 DEGREES 32 MINUTES 16 SECONDS WEST 651.08 FEET (L154) to a three and one-quarter (3.25) inch aluminum monument stamped "City of London Corporate Limits" located in the east right-of-way line of Interstate Route 75, having a State Plane Coordinate of **1,877,477.03 NORTH** and **2,119,209.72 EAST**;

Thence, crossing Interstate Route #75, **NORTH 76 DEGREES 46 MINUTES 38 SECONDS WEST 320.95 FEET (L155)** to a three and one-quarter (3.25) inch aluminum monument stamped "City of London Corporate Limits" located in the west right-of-way line of Interstate Route #75, having a State Plane Coordinate of **1,877,550.44 NORTH** and **2,118,897.28 EAST**;

Thence, meandering with the west right-of-way lines of Interstate Route #75, the following bearings and distances;

NORTH 01 DEGREES 57 MINUTES 23 SECONDS EAST 398.65 FEET; (L156)
NORTH 13 DEGREES 33 MINUTES 57 SECONDS WEST 942.51 FEET (L157) to a corner located at the intersection of the west right-of-way line of Interstate Route #75 and the south right-of-way line of State Route #770;

Thence, meandering with the south right-of-way lines of State Route #770, the following bearings and distances;

NORTH 75 DEGREES 43 MINUTES 20 SECONDS WEST 541.04 FEET; (L158)
 A CURVE to the LEFT having an ARC LENGTH of 1015.31 FEET, a RADIUS of 680.00 FEET, a CHORD BEARING and DISTANCE of **SOUTH 36 DEGREES 48 MINUTES 45 SECONDS WEST 923.59 FEET; (C1)**

SOUTH 89 DEGREES 00 MINUTES 10 SECONDS WEST 103.26 FEET (L159) crossing East City Dam Road, to a corner located in the south right-of-way line of State Route #770;

NORTH 54 DEGREES 34 MINUTES 06 SECONDS WEST 47.72 FEET; (L160)

SOUTH 37 DEGREES 19 MINUTES 12 SECONDS WEST 316.73 FEET; (L161)

SOUTH 54 DEGREES 45 MINUTES 30 SECONDS WEST 242.96 FEET; (L162)

SOUTH 69 DEGREES 03 MINUTES 42 SECONDS WEST 272.30 FEET; (L163)

SOUTH 89 DEGREES 10 MINUTES 30 SECONDS WEST 421.13 FEET; (L164)

NORTH 89 DEGREES 24 MINUTES 47 SECONDS WEST 288.08 FEET (L165) to a corner located at the approximate intersection of the south right-of-way line of State Route #770 and the approximate centerline of Laurel River, having a State Plane Coordinate of 1,877,792.43 NORTH and 2,116,116.01 EAST;

Thence, crossing State Route #770 and with the approximate centerline of Laurel River, **NORTH 00 DEGREES 35 MINUTES 13 SECONDS EAST 288.00 FEET (L166)** to a corner located at the approximate intersection of the north right-of-way line of State Route #770 and the approximate centerline of Laurel River, having a State Plane Coordinate of 1,878,080.42 NORTH and 2,116,118.96 EAST;

Thence, continuing with the north right-of-way lines of State Route #770, the following bearings and distances;

SOUTH 89 DEGREES 38 MINUTES 03 SECONDS EAST 337.47 FEET; (L167)

SOUTH 88 DEGREES 09 MINUTES 56 SECONDS EAST 331.74 FEET; (L168)

NORTH 77 DEGREES 32 MINUTES 29 SECONDS EAST 97.06 FEET; (L169)

NORTH 66 DEGREES 58 MINUTES 18 SECONDS EAST 119.93 FEET; (L170)

NORTH 54 DEGREES 04 MINUTES 12 SECONDS EAST 112.27 FEET; (L171)

NORTH 42 DEGREES 14 MINUTES 57 SECONDS EAST 118.47 FEET; (L172)

NORTH 35 DEGREES 30 MINUTES 49 SECONDS EAST 183.90 FEET; (L173)

NORTH 37 DEGREES 28 MINUTES 45 SECONDS EAST 360.76 FEET; (L174)

NORTH 37 DEGREES 42 MINUTES 36 SECONDS EAST 230.79 FEET; (L175)

NORTH 41 DEGREES 13 MINUTES 00 SECONDS EAST 57.57 FEET; (L176)

NORTH 49 DEGREES 36 MINUTES 17 SECONDS EAST 98.17 FEET; (L177)

NORTH 71 DEGREES 15 MINUTES 31 SECONDS EAST 229.06 FEET; (L178)

NORTH 73 DEGREES 49 MINUTES 15 SECONDS EAST 131.09 FEET; (L179)

NORTH 83 DEGREES 24 MINUTES 03 SECONDS EAST 122.99 FEET; (L180)

NORTH 14 DEGREES 44 MINUTES 19 SECONDS EAST 38.14 FEET; (L181)

SOUTH 67 DEGREES 56 MINUTES 06 SECONDS EAST 78.78 FEET; (L182)

NORTH 73 DEGREES 09 MINUTES 58 SECONDS EAST 26.24 FEET; (L183)

SOUTH 78 DEGREES 17 MINUTES 27 SECONDS EAST 237.40 FEET; (L184)

SOUTH 79 DEGREES 05 MINUTES 21 SECONDS EAST 175.94 FEET (L185) to a one and one-half (1 1/2) inch metal pipe located at the intersection of the north right-of-way line of State Route #770 and the west right-of-way line of Interstate Route #75, having a State Plane Coordinate of 1,879,072.22 NORTH and 2,118,721.93 EAST;

Thence, meandering with the west right-of-way lines of Interstate Route #75, the following bearings and distances;

NORTH 27 DEGREES 11 MINUTES 15 SECONDS EAST 613.39 FEET; (L186)

NORTH 10 DEGREES 23 MINUTES 06 SECONDS EAST 343.25 FEET; (L187)

NORTH 14 DEGREES 08 MINUTES 45 SECONDS EAST 363.14 FEET; (L188)

NORTH 06 DEGREES 31 MINUTES 28 SECONDS EAST 332.27 FEET; (L189)

NORTH 13 DEGREES 29 MINUTES 39 SECONDS EAST 152.25 FEET; (L190)

NORTH 00 DEGREES 51 MINUTES 16 SECONDS EAST 402.32 FEET; (L191)

NORTH 08 DEGREES 13 MINUTES 26 SECONDS EAST 646.71 FEET; (L192)
 NORTH 13 DEGREES 17 MINUTES 05 SECONDS EAST 349.73 FEET; (L193)
 NORTH 07 DEGREES 54 MINUTES 48 SECONDS EAST 514.33 FEET; (L194)
 NORTH 10 DEGREES 37 MINUTES 11 SECONDS WEST 176.04 FEET; (L195)
 NORTH 02 DEGREES 34 MINUTES 57 SECONDS EAST 215.42 FEET; (L196)
 NORTH 08 DEGREES 06 MINUTES 42 SECONDS EAST 58.82 FEET; (L197)
 NORTH 27 DEGREES 03 MINUTES 41 SECONDS EAST 209.28 FEET; (L198)
 NORTH 08 DEGREES 24 MINUTES 55 SECONDS EAST 2139.98 FEET; (L199)
 NORTH 07 DEGREES 36 MINUTES 37 SECONDS EAST 1090.55 FEET; (L200)
 NORTH 08 DEGREES 50 MINUTES 41 SECONDS EAST 385.05 FEET; (L201)
 NORTH 21 DEGREES 12 MINUTES 23 SECONDS EAST 403.34 FEET; (L202)
 NORTH 13 DEGREES 52 MINUTES 59 SECONDS EAST 303.77 FEET; (L203)
 NORTH 07 DEGREES 06 MINUTES 49 SECONDS EAST 420.67 FEET (L204) to a corner
 located at the approximate centerline of the Laurel River and in west right-of-way line of
 Interstate Route #75, having a State Plane Coordinate of 1,887,977.42 NORTH and
 2,120,344.24 EAST;

Thence, continuing to meander with the west right-of-way lines of Interstate Route #75, the following bearings and distances;

NORTH 14 DEGREES 11 MINUTES 34 SECONDS EAST 278.28 FEET; (L205)
 NORTH 20 DEGREES 20 MINUTES 34 SECONDS EAST 402.03 FEET; (L206)
 NORTH 13 DEGREES 58 MINUTES 15 SECONDS EAST 497.63 FEET; (L207)
 NORTH 08 DEGREES 03 MINUTES 48 SECONDS EAST 202.13 FEET; (L208)
 NORTH 19 DEGREES 51 MINUTES 00 SECONDS EAST 202.64 FEET; (L209)
 NORTH 14 DEGREES 17 MINUTES 05 SECONDS EAST 552.56 FEET; (L210)
 NORTH 00 DEGREES 29 MINUTES 25 SECONDS WEST 204.26 FEET; (L211)
 NORTH 37 DEGREES 20 MINUTES 31 SECONDS EAST 162.32 FEET; (L212)
 NORTH 14 DEGREES 29 MINUTES 36 SECONDS EAST 497.16 FEET; (L213)
 NORTH 09 DEGREES 54 MINUTES 24 SECONDS WEST 304.15 FEET; (L214)
 NORTH 35 DEGREES 28 MINUTES 22 SECONDS EAST 342.91 FEET; (L215)
 NORTH 13 DEGREES 47 MINUTES 22 SECONDS EAST 399.52 FEET; (L216)
 NORTH 04 DEGREES 54 MINUTES 51 SECONDS EAST 605.16 FEET; (L217)
 NORTH 27 DEGREES 38 MINUTES 49 SECONDS EAST 414.40 FEET; (L218)
 NORTH 13 DEGREES 12 MINUTES 44 SECONDS EAST 496.21 FEET; (L219)
 NORTH 14 DEGREES 07 MINUTES 04 SECONDS EAST 1104.38 FEET (L220) to a
 right-of-way monument located in the west right-of-way line of Interstate Route #75, having a
 State Plane Coordinate of 1,894,338.89 NORTH and 2,121,995.81 EAST;

Thence, continuing to meander with the west right-of-way lines of Interstate Route #75, the following bearings and distances;

NORTH 13 DEGREES 01 MINUTES 12 SECONDS EAST 114.79 FEET (L221) crossing
 State Route #552 to a point located in west right-of-way line of Interstate Route #75;
 NORTH 14 DEGREES 04 MINUTES 49 SECONDS EAST 75.83 FEET; (L222)
 NORTH 08 DEGREES 33 MINUTES 57 SECONDS WEST 402.84 FEET; (L223)
 NORTH 17 DEGREES 08 MINUTES 34 SECONDS EAST 308.62 FEET; (L224)
 NORTH 11 DEGREES 24 MINUTES 58 SECONDS WEST 379.26 FEET; (L225)
 NORTH 13 DEGREES 29 MINUTES 53 SECONDS EAST 472.49 FEET; (L226)
 NORTH 07 DEGREES 12 MINUTES 17 SECONDS WEST 721.78 FEET; (L227)
 NORTH 04 DEGREES 00 MINUTES 19 SECONDS EAST 358.45 FEET; (L228)
 NORTH 01 DEGREES 43 MINUTES 46 SECONDS EAST 671.37 FEET; (L229)
 NORTH 05 DEGREES 48 MINUTES 29 SECONDS EAST 583.52 FEET; (L230)
 NORTH 03 DEGREES 59 MINUTES 22 SECONDS EAST 335.86 FEET; (L231)
 NORTH 06 DEGREES 41 MINUTES 58 SECONDS EAST 589.83 FEET; (L232)
 NORTH 06 DEGREES 33 MINUTES 31 SECONDS EAST 1007.50 FEET; (L233)
 NORTH 04 DEGREES 29 MINUTES 56 SECONDS EAST 870.86 FEET (L234) to a corner
 located at the approximate intersection of the west right-of-way line of Interstate Route #75 and
 the centerline of Little Laurel River;

Thence, continuing with the west right-of-way lines of Interstate Route #75 and meandering with the approximate centerline of Little Laurel River, the following bearings and distances;

SOUTH 79 DEGREES 37 MINUTES 59 SECONDS WEST 63.26 FEET; (L235)
 NORTH 57 DEGREES 40 MINUTES 36 SECONDS WEST 25.69 FEET; (L236)

NORTH 18 DEGREES 52 MINUTES 08 SECONDS WEST 58.05 FEET; (L237)
 NORTH 16 DEGREES 48 MINUTES 34 SECONDS EAST 52.98 FEET; (L238)
 NORTH 07 DEGREES 14 MINUTES 52 SECONDS EAST 65.39 FEET; (L239)
 NORTH 20 DEGREES 12 MINUTES 38 SECONDS EAST 71.63 FEET; (L240)
 NORTH 41 DEGREES 36 MINUTES 43 SECONDS EAST 56.79 FEET; (L241)
 NORTH 29 DEGREES 17 MINUTES 29 SECONDS EAST 77.08 FEET; (L242)
 NORTH 05 DEGREES 47 MINUTES 18 SECONDS EAST 81.79 FEET; (L243)
 NORTH 00 DEGREES 22 MINUTES 59 SECONDS WEST 211.67 FEET; (L244)
 NORTH 21 DEGREES 22 MINUTES 41 SECONDS WEST 122.85 FEET; (L245)
 NORTH 62 DEGREES 36 MINUTES 16 SECONDS WEST 148.66 FEET; (L246)
 NORTH 64 DEGREES 11 MINUTES 13 SECONDS WEST 78.55 FEET (L247) to a corner
 located at the approximate intersection of the centerlines of Little Laurel River and Ward
 Branch;

Thence, continuing with the west right-of-way lines of Interstate Route #75 and meandering with
 the approximate centerline of Ward Branch, the following bearings and distances;

NORTH 09 DEGREES 27 MINUTES 19 SECONDS EAST 107.61 FEET; (L248)
 NORTH 16 DEGREES 22 MINUTES 40 SECONDS WEST 83.59 FEET; (L249)
 NORTH 48 DEGREES 47 MINUTES 33 SECONDS WEST 87.72 FEET; (L250)
 NORTH 19 DEGREES 02 MINUTES 39 SECONDS WEST 68.62 FEET; (L251)
 NORTH 19 DEGREES 58 MINUTES 09 SECONDS EAST 55.21 FEET; (L252)
 NORTH 28 DEGREES 27 MINUTES 21 SECONDS EAST 79.14 FEET; (L253)
 NORTH 10 DEGREES 42 MINUTES 18 SECONDS EAST 44.41 FEET; (L254)
 NORTH 53 DEGREES 49 MINUTES 16 SECONDS WEST 75.92 FEET; (L255)
 NORTH 80 DEGREES 41 MINUTES 21 SECONDS WEST 212.04 FEET; (L256)
 NORTH 64 DEGREES 43 MINUTES 25 SECONDS WEST 185.06 FEET; (L257)
 NORTH 54 DEGREES 59 MINUTES 12 SECONDS WEST 195.45 FEET; (L258)
 NORTH 09 DEGREES 27 MINUTES 19 SECONDS EAST 92.08 FEET; (L259)
 NORTH 52 DEGREES 34 MINUTES 25 SECONDS EAST 107.94 FEET; (L260)
 SOUTH 89 DEGREES 22 MINUTES 12 SECONDS EAST 152.95 FEET; (L261)
 NORTH 79 DEGREES 17 MINUTES 05 SECONDS EAST 110.47 FEET; (L262)
 NORTH 50 DEGREES 35 MINUTES 10 SECONDS EAST 128.46 FEET; (L263)
 NORTH 05 DEGREES 40 MINUTES 46 SECONDS WEST 139.47 FEET; (L264)
 NORTH 65 DEGREES 27 MINUTES 03 SECONDS WEST 104.23 FEET; (L265)
 NORTH 48 DEGREES 34 MINUTES 19 SECONDS WEST 176.95 FEET; (L266)
 NORTH 39 DEGREES 35 MINUTES 21 SECONDS WEST 90.85 FEET; (L267)
 NORTH 05 DEGREES 01 MINUTES 13 SECONDS WEST 110.26 FEET; (L268)
 NORTH 17 DEGREES 27 MINUTES 44 SECONDS EAST 68.33 FEET; (L269)
 NORTH 36 DEGREES 41 MINUTES 54 SECONDS EAST 183.66 FEET; (L270)
 NORTH 11 DEGREES 47 MINUTES 37 SECONDS WEST 82.62 FEET; (L271)
 NORTH 25 DEGREES 13 MINUTES 25 SECONDS EAST 93.40 FEET; (L272)
 NORTH 03 DEGREES 02 MINUTES 14 SECONDS WEST 136.59 FEET; (L273)
 NORTH 15 DEGREES 30 MINUTES 38 SECONDS WEST 55.49 FEET; (L274)
 NORTH 90 DEGREES 00 MINUTES 00 SECONDS WEST 43.42 FEET; (L275)
 SOUTH 50 DEGREES 10 MINUTES 23 SECONDS WEST 56.54 FEET; (L276)
 SOUTH 29 DEGREES 50 MINUTES 25 SECONDS WEST 75.14 FEET; (L277)
 SOUTH 22 DEGREES 58 MINUTES 23 SECONDS WEST 86.53 FEET; (L278)
 SOUTH 66 DEGREES 16 MINUTES 52 SECONDS WEST 54.01 FEET; (L279)
 NORTH 76 DEGREES 16 MINUTES 58 SECONDS WEST 50.90 FEET; (L280)
 NORTH 54 DEGREES 26 MINUTES 30 SECONDS WEST 72.65 FEET; (L281)
 NORTH 28 DEGREES 40 MINUTES 04 SECONDS WEST 72.91 FEET; (L282)
 NORTH 01 DEGREES 14 MINUTES 40 SECONDS WEST 111.07 FEET; (L283)
 NORTH 12 DEGREES 44 MINUTES 26 SECONDS WEST 169.54 FEET; (L284)
 NORTH 03 DEGREES 34 MINUTES 25 SECONDS EAST 96.75 FEET; (L285)
 NORTH 21 DEGREES 58 MINUTES 33 SECONDS WEST 67.68 FEET; (L286)
 NORTH 39 DEGREES 27 MINUTES 04 SECONDS WEST 53.15 FEET; (L287)
 NORTH 70 DEGREES 48 MINUTES 26 SECONDS WEST 29.37 FEET; (L288)
 SOUTH 51 DEGREES 19 MINUTES 08 SECONDS WEST 30.90 FEET; (L289)
 SOUTH 25 DEGREES 19 MINUTES 46 SECONDS WEST 50.75 FEET; (L290)
 SOUTH 09 DEGREES 17 MINUTES 11 SECONDS WEST 67.27 FEET; (L291)
 SOUTH 32 DEGREES 10 MINUTES 34 SECONDS WEST 38.50 FEET; (L292)
 NORTH 79 DEGREES 06 MINUTES 24 SECONDS WEST 31.93 FEET; (L293)

NORTH 48 DEGREES 47 MINUTES 32 SECONDS WEST 25.65 FEET; (L294)
 NORTH 28 DEGREES 09 MINUTES 38 SECONDS WEST 38.33 FEET; (L295)
 NORTH 09 DEGREES 27 MINUTES 19 SECONDS WEST 66.08 FEET; (L296)
 NORTH 01 DEGREES 19 MINUTES 52 SECONDS EAST 103.83 FEET; (L970)
 NORTH 08 DEGREES 36 MINUTES 33 SECONDS WEST 40.29 FEET; (L298)
 NORTH 19 DEGREES 33 MINUTES 34 SECONDS EAST 57.64 FEET; (L299)
 NORTH 14 DEGREES 01 MINUTES 33 SECONDS WEST 29.86 FEET; (L300)
 NORTH 42 DEGREES 22 MINUTES 33 SECONDS WEST 37.58 FEET; (L301)
 NORTH 01 DEGREES 47 MINUTES 19 SECONDS EAST 38.64 FEET; (L302)

Thence, leaving Ward Branch and continuing to meander with the west right-of-way lines of Interstate Route #75, the following bearings and distances;

NORTH 68 DEGREES 02 MINUTES 09 SECONDS EAST 865.84 FEET; (L303)
 NORTH 31 DEGREES 42 MINUTES 03 SECONDS EAST 155.72 FEET (L304) to an iron pin #2776, located in the west right-of-way line of Interstate Route #75, having a State Plane Coordinate of 1,905,181.00 NORTH and 2,122,073.27 EAST;

Thence, continuing to meander with the west right-of-way lines of Interstate Route #75, the following bearings and distances;

NORTH 06 DEGREES 27 MINUTES 41 SECONDS EAST 831.76 FEET; (L305)
 NORTH 03 DEGREES 05 MINUTES 42 SECONDS EAST 2020.29 FEET; (L306)
 NORTH 01 DEGREES 49 MINUTES 56 SECONDS WEST 253.95 FEET; (L307)
 NORTH 08 DEGREES 24 MINUTES 20 SECONDS EAST 251.34 FEET; (L308)
 NORTH 02 DEGREES 50 MINUTES 34 SECONDS EAST 597.40 FEET; (L309)
 NORTH 00 DEGREES 05 MINUTES 32 SECONDS WEST 161.05 FEET; (L310)
 NORTH 01 DEGREES 13 MINUTES 32 SECONDS WEST 157.04 FEET; (L311)
 NORTH 03 DEGREES 45 MINUTES 25 SECONDS WEST 188.04 FEET; (L312)
 NORTH 06 DEGREES 05 MINUTES 43 SECONDS WEST 333.74 FEET; (L313)
 NORTH 07 DEGREES 34 MINUTES 32 SECONDS WEST 1158.21 FEET; (L314)
 NORTH 16 DEGREES 51 MINUTES 51 SECONDS WEST 298.03 FEET; (L315)
 NORTH 06 DEGREES 35 MINUTES 32 SECONDS WEST 102.80 FEET; (L316)
 NORTH 02 DEGREES 00 MINUTES 51 SECONDS WEST 363.12 FEET; (L317)
 NORTH 07 DEGREES 25 MINUTES 45 SECONDS WEST 456.43 FEET; (L318)
 NORTH 04 DEGREES 15 MINUTES 44 SECONDS WEST 452.71 FEET; (L319)
 NORTH 01 DEGREES 52 MINUTES 21 SECONDS WEST 534.22 FEET; (L320)
 NORTH 17 DEGREES 58 MINUTES 50 SECONDS WEST 278.31 FEET; (L321)
 NORTH 09 DEGREES 29 MINUTES 25 SECONDS EAST 324.10 FEET; (L322)
 NORTH 03 DEGREES 08 MINUTES 54 SECONDS WEST 986.14 FEET; (L323)
 NORTH 01 DEGREES 52 MINUTES 02 SECONDS WEST 607.48 FEET; (L324)
 NORTH 02 DEGREES 47 MINUTES 38 SECONDS WEST 1885.88 FEET; (L325)
 NORTH 03 DEGREES 39 MINUTES 00 SECONDS WEST 958.07 FEET; (L326)
 NORTH 04 DEGREES 43 MINUTES 50 SECONDS WEST 783.34 FEET (L327) to a fence post corner located in west right-of-way line of Interstate Route #75, having a State Plane Coordinate of 1,919,094.42 NORTH and 2,121,585.05 EAST;

Thence, continuing to meander with the west right-of-way lines of Interstate Route #75, the following bearings and distances;

NORTH 04 DEGREES 58 MINUTES 28 SECONDS WEST 757.36 FEET (L328) crossing State Route #363 to a point located in west right-of-way line of Interstate Route #75;
 NORTH 15 DEGREES 21 MINUTES 56 SECONDS WEST 168.14 FEET; (L329)
 NORTH 03 DEGREES 11 MINUTES 58 SECONDS WEST 814.15 FEET; (L330)
 NORTH 07 DEGREES 09 MINUTES 56 SECONDS WEST 166.06 FEET; (L331)
 NORTH 05 DEGREES 35 MINUTES 51 SECONDS WEST 1498.21 FEET; (L332)
 NORTH 01 DEGREES 15 MINUTES 40 SECONDS WEST 633.89 FEET; (L333)
 NORTH 05 DEGREES 03 MINUTES 11 SECONDS WEST 663.66 FEET; (L334)
 NORTH 06 DEGREES 12 MINUTES 31 SECONDS WEST 818.46 FEET (L335) to a three and one-quarter (3.25) inch aluminum monument stamped "City of London Corporate Limits", located in the west right-of-way line of Interstate Route #75, having a State Plane Coordinate of 1,924,588.23 NORTH and 2,121,101.63 EAST;

Thence, crossing Interstate Route #75, NORTH 77 DEGREES 11 MINUTES 01 SECONDS EAST 281.35 FEET (L336) to the corner of the BEGINNING containing 548.74 ACRES more

or less, by calculation. This city annexation description was prepared from survey plat maps, highway right-of-way plans, GPS field data and information provided by the City of London, Kentucky, dated April 07, 2020, by Kentucky Surveys, Inc., Stephen M. Flinchum, Licensed Professional Surveyor #4119.

TRACT #2

A certain tract located at the intersection of Interstate Route #75 and West Cumberland Gap Parkway, and more particularly described as follows:

All hereinafter coordinates are referenced from Kentucky State Plane Coordinate System, South Zone, and referenced from the 1983 North American Datum. All hereinafter bearings and distances are referenced to the Kentucky State Plane Grid System.

BEGINNING at a three and one-quarter (3.25) inch aluminum monument stamped "City of London Corporate Limits", located approximately 0.39 mile north from the intersection of Interstate Route #75 and West Cumberland Gap Parkway, in the east right-of-way line of Interstate Route #75, having a State Plane Coordinate of **1,880,869.04 NORTH**, and **2,119,557.42 EAST**; Said monument also being a corner of the proposed annexation TRACT #1;

Thence, with the east right-of-way lines of Interstate Route #75 and the proposed annexation TRACT #1, the following bearings and distances;

SOUTH 08 DEGREES 55 MINUTES 53 SECONDS WEST 748.52 FEET; (L97)
SOUTH 03 DEGREES 48 MINUTES 20 SECONDS EAST 384.38 FEET; (L98)
SOUTH 13 DEGREES 13 MINUTES 06 SECONDS EAST 308.83 FEET; (L99)
SOUTH 05 DEGREES 11 MINUTES 00 SECONDS EAST 287.66 FEET; (L100)
SOUTH 10 DEGREES 09 MINUTES 29 SECONDS EAST 159.18 FEET; (L101)
SOUTH 21 DEGREES 40 MINUTES 55 SECONDS EAST 58.63 FEET; (L102)
SOUTH 48 DEGREES 44 MINUTES 01 SECONDS EAST 132.17 FEET (L103)

to a three and one-quarter (3.25) inch aluminum monument stamped "City of London Corporate Limits" having a State Plane Coordinate of **1,878,860.59 NORTH**, and **2,119,712.41 EAST**;

Thence, leaving the east right-of-way line of Interstate Route #75, with the proposed annexation TRACT #1 and meandering with the north right-of-way lines of West Cumberland Gap Parkway, the following bearings and distances;

SOUTH 74 DEGREES 17 MINUTES 40 SECONDS EAST 234.45 FEET; (L104)
SOUTH 71 DEGREES 56 MINUTES 32 SECONDS EAST 187.58 FEET; (L105)
NORTH 47 DEGREES 46 MINUTES 13 SECONDS EAST 53.81 FEET; (L106)
SOUTH 77 DEGREES 53 MINUTES 04 SECONDS EAST 19.55 FEET; (L337)

Thence, leaving the north right-of-way line of West Cumberland Gap Parkway, and the proposed annexation TRACT #1 and with the G & M Oil Company, Inc. property boundary lines, the following bearings and distances;

NORTH 49 DEGREES 26 MINUTES 24 SECONDS EAST 120.01 FEET; (L338)
NORTH 49 DEGREES 37 MINUTES 01 SECONDS EAST 701.36 FEET; (L339)
SOUTH 45 DEGREES 47 MINUTES 31 SECONDS EAST 275.26 FEET; (L340)
NORTH 42 DEGREES 47 MINUTES 28 SECONDS EAST 572.51 FEET; (L341)
NORTH 45 DEGREES 24 MINUTES 08 SECONDS WEST 56.82 FEET; (L342)
NORTH 42 DEGREES 38 MINUTES 55 SECONDS WEST 93.24 FEET; (L343)
NORTH 43 DEGREES 35 MINUTES 10 SECONDS WEST 82.37 FEET; (L344)
NORTH 43 DEGREES 09 MINUTES 16 SECONDS WEST 142.30 FEET; (L345)
NORTH 44 DEGREES 02 MINUTES 58 SECONDS WEST 146.98 FEET; (L346)
NORTH 53 DEGREES 42 MINUTES 19 SECONDS EAST 190.15 FEET; (L347)
NORTH 51 DEGREES 48 MINUTES 13 SECONDS EAST 585.81 FEET; (L348)
NORTH 49 DEGREES 51 MINUTES 48 SECONDS EAST 329.29 FEET (L349) to a corner located in the west right-of-way line of State Route #1223;

Thence, with the west right-of-way line of State Route #1223, **NORTH 25 DEGREES 18 MINUTES 14 SECONDS WEST 37.58 FEET (L350)** to an iron pin with plastic cap stamped #3276, having a State Plane Coordinate of **1,880,630.32 NORTH**, and **2,121,876.44 EAST**;

Thence, leaving the west right-of-way line of State Route #1223 and continuing with the G & M Oil Company, Inc. property boundary lines, the following bearings and distances:
 NORTH 72 DEGREES 02 MINUTES 10 SECONDS WEST 186.61 FEET; (L351)
 NORTH 69 DEGREES 36 MINUTES 36 SECONDS WEST 177.56 FEET; (L352)
 NORTH 67 DEGREES 55 MINUTES 21 SECONDS WEST 177.85 FEET; (L353)
 NORTH 65 DEGREES 08 MINUTES 21 SECONDS WEST 220.15 FEET; (L354)
 NORTH 64 DEGREES 03 MINUTES 53 SECONDS WEST 345.05 FEET; (L355)
 NORTH 56 DEGREES 06 MINUTES 07 SECONDS WEST 329.60 FEET; (L356)
 NORTH 53 DEGREES 23 MINUTES 18 SECONDS WEST 166.08 FEET; (L357)
 NORTH 76 DEGREES 35 MINUTES 51 SECONDS WEST 182.43 FEET; (L358)
 NORTH 87 DEGREES 19 MINUTES 12 SECONDS WEST 122.91 FEET; (L359)
 NORTH 76 DEGREES 26 MINUTES 18 SECONDS WEST 164.64 FEET; (L360)
 SOUTH 24 DEGREES 29 MINUTES 06 SECONDS WEST 533.00 FEET; (L361)
 SOUTH 70 DEGREES 25 MINUTES 15 SECONDS WEST 225.15 FEET (L362) to the corner of the BEGINNING containing 91.00 ACRES more or less, by calculation. This city annexation description was prepared from survey plat maps, highway right-of-way plans, record deeds, GPS field data and information provided by the City of London, Kentucky, dated April 07, 2020, by Kentucky Surveys, Inc., Stephen M. Flinchum, Licensed Professional Surveyor #4119.

19. This Intent to Annex Ordinance and the various parts thereof are hereby declared to be severable. If any section, clause, sentence, or phrase of this Intent to Annex Ordinance is held to be invalid or unconstitutional by any court of competent jurisdiction, then said holding shall not affect the validity of the ordinance as a whole, or any portion thereof other than the section so declared to be unconstitutional or invalid.
20. This Intent to Annex Ordinance shall become effective immediately upon publication. All Ordinances or parts of Ordinances in conflict herewith are hereby repealed.


 TROY RUDDER, MAYOR

ATTEST: 
 CAROLYN ADAMS, CITY CLERK

FIRST READING: August 12, 2020
 SECOND READING September 10, 2020
 PUBLICATION: September 16, 2020

DRAWN BY: S. FLINZDUM FEBRUARY 25, 2021	CHECKED BY: C. J. FELTS APRIL 02, 2021
--	---

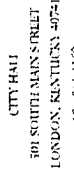
ILLUSTRATE THE EXISTING WATER AND SEWER EASEMENTS CONVEYED TO THE CITY OF CHATTEN, KENTUCKY, RECORDED IN DEED BOOK 185, PAGE 113 AND DEED BOOK 189, PAGE 418.

SCALE
1 INCH = 200 FEET

SHEET
1 of 1
DRAWING

3-27-2020 6 4 M OIL dng
TIAUS3112 CITY OF LONDON CFB

TO
STATE ROUTE



WEB SITE: www.londonky.com

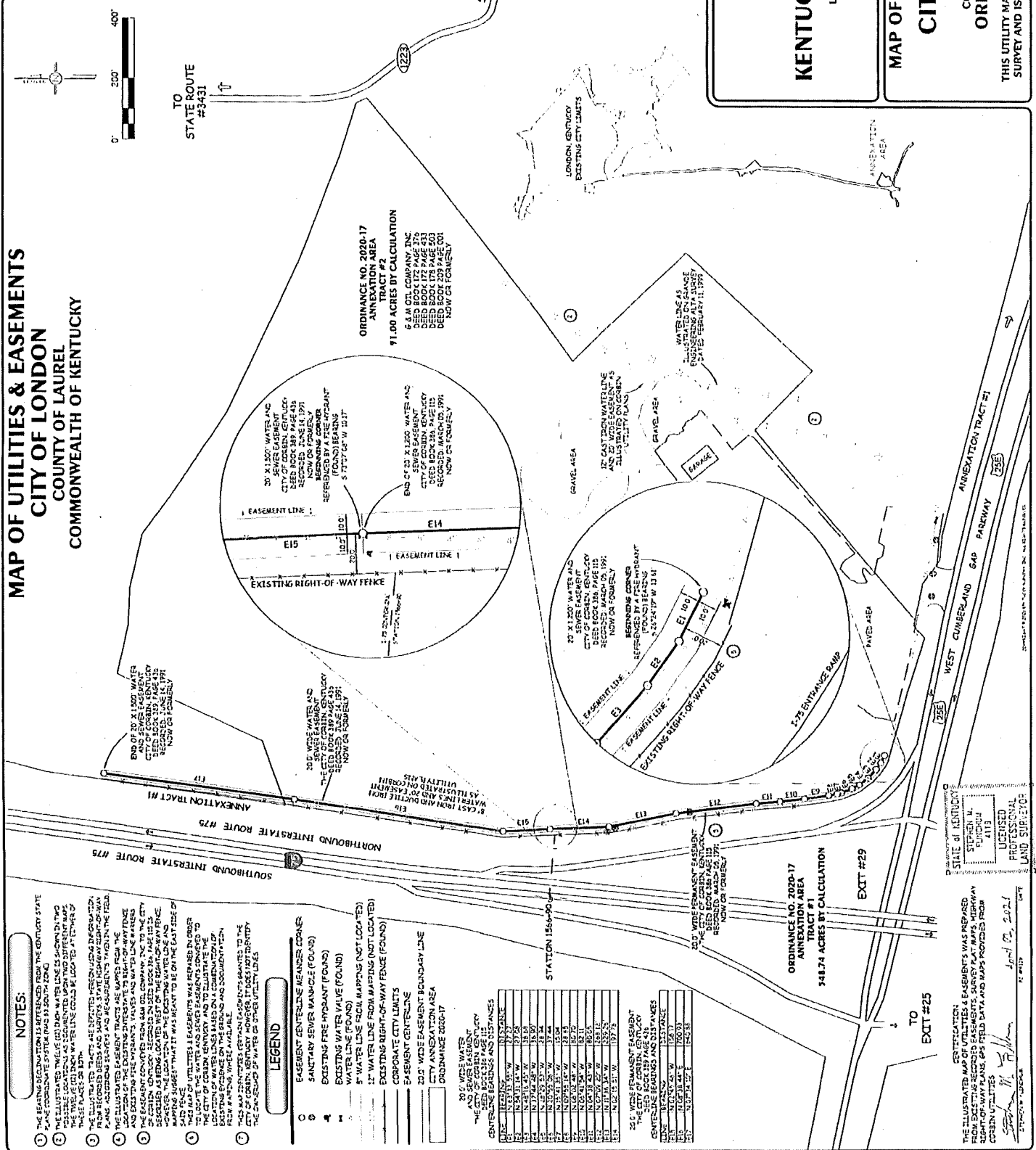
KENTUCKY SURVEYS, INC.
1802 McDONALD'S LANE
LONDON, KENTUCKY 40741

606 - 864 - 3472
kysurveys@windstream.net
www.kentuckysurveys.com

MAP OF UTILITIES & EASEMENTS
CITY OF LONDON

COUNTY OF LAUREL
COMMONWEALTH OF KENTUCKY
ORDINANCE #2020-17

THIS UTILITY MAP DOES NOT REPRESENT A BOUNDARY SURVEY AND IS NOT INTENDED FOR LAND TRANSFER.



TRACT #1

A certain tract located approximately 0.56 mile south from Interstate Route #75, exit #38, and more particularly described as follows:

All hereinafter coordinates are referenced from Kentucky State Plane Coordinate System, South Zone, and referenced from the 1983 North American Datum. All hereinafter bearings and distances are referenced to the Kentucky State Plane Grid System.

BEGINNING at a five-eighths (5/8) inch iron pin with aluminum cap located in the east right-of-way line of Interstate Route #75, located 0.56 mile south from the approximate intersection of Interstate Route 75 and State Route #192, having a State Plane Coordinate of **1,924,650.64 NORTH** and **2,121,375.97 EAST**;

Thence, meandering with the east right-of-way lines of Interstate Route 75, the following bearings and distances;

SOUTH 05 DEGREES 03 MINUTES 16 SECONDS EAST 971.95 FEET; (L1)
SOUTH 06 DEGREES 08 MINUTES 09 SECONDS EAST 845.43 FEET; (L2)
SOUTH 08 DEGREES 38 MINUTES 13 SECONDS EAST 494.43 FEET; (L3)
SOUTH 02 DEGREES 55 MINUTES 16 SECONDS EAST 998.32 FEET; (L4)
SOUTH 05 DEGREES 32 MINUTES 58 SECONDS EAST 390.64 FEET; (L5)
SOUTH 05 DEGREES 48 MINUTES 02 SECONDS EAST 809.53 FEET; (L6)
SOUTH 04 DEGREES 35 MINUTES 20 SECONDS EAST 292.71 FEET; (L7)
SOUTH 04 DEGREES 29 MINUTES 32 SECONDS EAST 304.73 FEET; (L8)

crossing State Route #363, to a right-of-way monument located in the east right-of-way line of Interstate Route #75, having a State Plane Coordinate of **1,919,566.29 NORTH** and **2,121,843.97 EAST**;

Thence, continuing to meander with the east right-of-way lines of Interstate Route #75, the following bearings and distances;

SOUTH 04 DEGREES 04 MINUTES 32 SECONDS WEST 202.75 FEET; (L9)
SOUTH 23 DEGREES 20 MINUTES 39 SECONDS EAST 108.35 FEET; (L10)
SOUTH 05 DEGREES 07 MINUTES 42 SECONDS EAST 765.45 FEET; (L11)
SOUTH 02 DEGREES 41 MINUTES 38 SECONDS EAST 1,140.14 FEET; (L12)
SOUTH 03 DEGREES 09 MINUTES 12 SECONDS EAST 1,804.42 FEET; (L13)
SOUTH 07 DEGREES 25 MINUTES 51 SECONDS WEST 296.66 FEET; (L14)
SOUTH 13 DEGREES 45 MINUTES 56 SECONDS EAST 359.32 FEET; (L15)
SOUTH 04 DEGREES 28 MINUTES 31 SECONDS EAST 147.73 FEET; (L16)
SOUTH 02 DEGREES 12 MINUTES 54 SECONDS WEST 199.05 FEET; (L17)
SOUTH 07 DEGREES 44 MINUTES 37 SECONDS EAST 514.34 FEET; (L18)
SOUTH 01 DEGREES 25 MINUTES 41 SECONDS EAST 300.47 FEET; (L19)
SOUTH 16 DEGREES 34 MINUTES 44 SECONDS EAST 110.03 FEET; (L20)
SOUTH 06 DEGREES 38 MINUTES 31 SECONDS WEST 370.81 FEET; (L21)
SOUTH 02 DEGREES 37 MINUTES 43 SECONDS EAST 507.47 FEET; (L22)
SOUTH 03 DEGREES 58 MINUTES 16 SECONDS EAST 267.81 FEET; (L23)

SOUTH 05 DEGREES 34 MINUTES 34 SECONDS EAST 466.14 FEET; (L24)
SOUTH 07 DEGREES 27 MINUTES 02 SECONDS EAST 190.78 FEET; (L25)
SOUTH 14 DEGREES 30 MINUTES 26 SECONDS EAST 461.77 FEET; (L26)
SOUTH 01 DEGREES 27 MINUTES 04 SECONDS WEST 301.53 FEET; (L27)
SOUTH 07 DEGREES 59 MINUTES 32 SECONDS EAST 590.11 FEET; (L28)
SOUTH 04 DEGREES 35 MINUTES 01 SECONDS EAST 627.71 FEET; (L29)
SOUTH 10 DEGREES 49 MINUTES 28 SECONDS EAST 274.36 FEET; (L30)
SOUTH 03 DEGREES 39 MINUTES 33 SECONDS EAST 348.95 FEET; (L31)
SOUTH 02 DEGREES 07 MINUTES 29 SECONDS WEST 399.99 FEET; (L32)
SOUTH 01 DEGREES 45 MINUTES 35 SECONDS WEST 230.09 FEET; (L33)
SOUTH 08 DEGREES 01 MINUTES 10 SECONDS EAST 360.42 FEET; (L34)
SOUTH 30 DEGREES 00 MINUTES 51 SECONDS WEST 166.19 FEET; (L35)
SOUTH 04 DEGREES 09 MINUTES 54 SECONDS WEST 342.69 FEET; (L36)
SOUTH 02 DEGREES 37 MINUTES 46 SECONDS WEST 305.37 FEET; (L37)
SOUTH 00 DEGREES 39 MINUTES 28 SECONDS WEST 500.04 FEET; (L38)
SOUTH 06 DEGREES 45 MINUTES 52 SECONDS WEST 303.95 FEET; (L39)
SOUTH 03 DEGREES 09 MINUTES 13 SECONDS WEST 1,422.47 FEET; (L40)
SOUTH 05 DEGREES 29 MINUTES 46 SECONDS WEST 71.66 FEET; (L41)
SOUTH 02 DEGREES 33 MINUTES 00 SECONDS WEST 197.25 FEET; (L42)
SOUTH 00 DEGREES 37 MINUTES 17 SECONDS EAST 276.80 FEET; (L43)
SOUTH 02 DEGREES 42 MINUTES 14 SECONDS EAST 320.26 FEET; (L44)
SOUTH 05 DEGREES 48 MINUTES 23 SECONDS EAST 178.85 FEET; (L45)
SOUTH 12 DEGREES 57 MINUTES 04 SECONDS EAST 549.77 FEET (L46) to
 a three and one-quarter (3.25) inch aluminum monument stamped "City of
 London Corporate Limits" located in the east right-of-way line of Interstate Route
 #75, having a State Plane Coordinate of **1,903,706.71 NORTH** and
2,122,566.25 EAST;

Thence, continuing to meander with the east right-of-way lines of Interstate Route #75, the following bearings and distances;

SOUTH 42 DEGREES 46 MINUTES 42 SECONDS EAST 2,008.08 FEET; (L47)
SOUTH 44 DEGREES 38 MINUTES 40 SECONDS WEST 786.07 FEET (L48)
 crossing the Little Laurel River;
SOUTH 43 DEGREES 27 MINUTES 52 SECONDS WEST 468.05 FEET; (L49)
SOUTH 68 DEGREES 08 MINUTES 18 SECONDS WEST 198.93 FEET (L50) to
 a corner located in the east right-of-way line of Interstate Route #75;
SOUTH 01 DEGREES 13 MINUTES 24 SECONDS WEST 122.00 FEET; (L51)
SOUTH 20 DEGREES 30 MINUTES 48 SECONDS WEST 211.90 FEET; (L52)
SOUTH 02 DEGREES 18 MINUTES 51 SECONDS EAST 601.79 FEET; (L53)
SOUTH 01 DEGREES 43 MINUTES 24 SECONDS WEST 1,300.28 FEET; (L54)
SOUTH 00 DEGREES 33 MINUTES 48 SECONDS WEST 644.34 FEET; (L55)
SOUTH 03 DEGREES 48 MINUTES 37 SECONDS WEST 555.39 FEET; (L56)
SOUTH 07 DEGREES 08 MINUTES 55 SECONDS WEST 251.50 FEET; (L57)
SOUTH 12 DEGREES 27 MINUTES 36 SECONDS EAST 101.42 FEET; (L58)
SOUTH 01 DEGREES 27 MINUTES 12 SECONDS WEST 552.00 FEET; (L59)
SOUTH 04 DEGREES 47 MINUTES 11 SECONDS EAST 601.69 FEET; (L60)

SOUTH 16 DEGREES 56 MINUTES 02 SECONDS WEST 426.42 FEET; (L61)
SOUTH 01 DEGREES 20 MINUTES 40 SECONDS WEST 514.42 FEET; (L62)
SOUTH 12 DEGREES 30 MINUTES 44 SECONDS WEST 507.71 FEET; (L63)
SOUTH 17 DEGREES 21 MINUTES 02 SECONDS WEST 651.80 FEET; (L64)
SOUTH 17 DEGREES 06 MINUTES 37 SECONDS WEST 90.17 FEET, (L65)
crossing State Route #552, to a right-of-way monument located in the east right-of-way line of Interstate Route #75, having a State Plane Coordinate of **1,894,213.67 NORTH** and **2,122,295.80 EAST;**

Thence, continuing to meander with the east right-of-way lines of Interstate Route #75, the following bearings and distances;

SOUTH 13 DEGREES 49 MINUTES 00 SECONDS WEST 971.56 FEET; (L66)
SOUTH 13 DEGREES 24 MINUTES 11 SECONDS WEST 628.71 FEET; (L67)
SOUTH 08 DEGREES 59 MINUTES 24 SECONDS EAST 148.01 FEET; (L68)
SOUTH 23 DEGREES 49 MINUTES 53 SECONDS WEST 301.41 FEET; (L69)
SOUTH 13 DEGREES 42 MINUTES 33 SECONDS WEST 293.42 FEET; (L70)
SOUTH 09 DEGREES 22 MINUTES 35 SECONDS WEST 416.65 FEET; (L71)
SOUTH 28 DEGREES 54 MINUTES 10 SECONDS WEST 161.82 FEET; (L72)
SOUTH 11 DEGREES 09 MINUTES 15 SECONDS WEST 490.15 FEET; (L73)
SOUTH 32 DEGREES 46 MINUTES 48 SECONDS WEST 105.62 FEET; (L74)
SOUTH 14 DEGREES 02 MINUTES 01 SECONDS WEST 247.72 FEET; (L75)
SOUTH 01 DEGREES 52 MINUTES 37 SECONDS WEST 100.11 FEET; (L76)
SOUTH 20 DEGREES 26 MINUTES 32 SECONDS WEST 202.55 FEET; (L77)
SOUTH 04 DEGREES 28 MINUTES 42 SECONDS EAST 168.95 FEET; (L78)
SOUTH 38 DEGREES 33 MINUTES 05 SECONDS WEST 153.65 FEET; (L79)
SOUTH 10 DEGREES 16 MINUTES 47 SECONDS WEST 810.81 FEET; (L80)
SOUTH 36 DEGREES 40 MINUTES 26 SECONDS WEST 108.03 FEET; (L81)
SOUTH 14 DEGREES 02 MINUTES 17 SECONDS WEST 304.16 FEET; (L82)
SOUTH 20 DEGREES 23 MINUTES 20 SECONDS WEST 101.90 FEET; (L83)
SOUTH 13 DEGREES 59 MINUTES 03 SECONDS WEST 693.42 FEET; (L84)
SOUTH 08 DEGREES 50 MINUTES 14 SECONDS WEST 237.73 FEET (L85) to
a corner located at the intersection of the east right-of-way line of Interstate Route #75 and the approximate centerline of Laurel River, having a State Plane Coordinate of **1,887,827.65 NORTH** and **2,120,712.51 EAST;**

Thence, continuing to meander with the east right-of-way lines of Interstate Route #75, the following bearings and distances;

SOUTH 14 DEGREES 23 MINUTES 22 SECONDS WEST 162.09 FEET; (L86)
SOUTH 22 DEGREES 46 MINUTES 31 SECONDS WEST 151.36 FEET; (L87)
SOUTH 14 DEGREES 11 MINUTES 50 SECONDS WEST 658.08 FEET; (L88)
SOUTH 08 DEGREES 32 MINUTES 10 SECONDS WEST 295.43 FEET; (L89)
SOUTH 13 DEGREES 54 MINUTES 00 SECONDS WEST 503.21 FEET; (L90)
SOUTH 05 DEGREES 43 MINUTES 33 SECONDS WEST 396.28 FEET; (L91)
SOUTH 07 DEGREES 31 MINUTES 24 SECONDS WEST 442.04 FEET; (L92)
SOUTH 08 DEGREES 34 MINUTES 51 SECONDS WEST 3051.75 FEET; (L93)
SOUTH 01 DEGREES 58 MINUTES 02 SECONDS EAST 305.10 FEET; (L94)

SOUTH 14 DEGREES 50 MINUTES 32 SECONDS WEST 301.85 FEET; (L95)
SOUTH 07 DEGREES 53 MINUTES 46 SECONDS WEST 804.24 FEET; (L96)
to a three and one-quarter (3.25) inch aluminum monument stamped "City of London Corporate Limits" located in the east right-of-way line of Interstate Route #75 and being the beginning corner of the proposed annexation TRACT #2, having a State Plane Coordinate of **1,880,869.04 NORTH** and **2,119,557.42 EAST;**

Thence, continuing to meander with the east right-of-way lines of Interstate Route #75, and with the west boundary lines of the proposed annexation TRACT #2, the following bearings and distances;

SOUTH 08 DEGREES 55 MINUTES 53 SECONDS WEST 748.52 FEET; (L97)
SOUTH 03 DEGREES 48 MINUTES 20 SECONDS EAST 384.38 FEET; (L98)
SOUTH 13 DEGREES 13 MINUTES 06 SECONDS EAST 308.83 FEET; (L99)
SOUTH 05 DEGREES 11 MINUTES 00 SECONDS EAST 287.66 FEET; (L100)
SOUTH 10 DEGREES 09 MINUTES 29 SECONDS EAST 159.18 FEET; (L101)
SOUTH 21 DEGREES 40 MINUTES 55 SECONDS EAST 58.63 FEET; (L102)
SOUTH 48 DEGREES 44 MINUTES 01 SECONDS EAST 132.17 FEET (L103)
to a three and one-quarter (3.25) inch aluminum monument stamped "City of London Corporate Limits" located at the intersection of the east right-of-way line of Interstate Route 75 and the north right-of-way line of West Cumberland Gap Parkway, having a State Plane Coordinate of **1,878,860.59 NORTH** and **2,119,712.41 EAST;**

Thence, meandering with the north right-of-way lines of West Cumberland Gap Parkway, the following bearings and distances;

SOUTH 74 DEGREES 17 MINUTES 40 SECONDS EAST 234.45 FEET; (L104)
SOUTH 71 DEGREES 56 MINUTES 32 SECONDS EAST 187.58 FEET; (L105)
NORTH 47 DEGREES 46 MINUTES 13 SECONDS EAST 53.81 FEET; (L106)

Thence, leaving the proposed annexation TRACT #2 and continuing to meander with the north right-of-way lines of West Cumberland Gap Parkway, the following bearings and distances;

SOUTH 77 DEGREES 53 MINUTES 04 SECONDS EAST 143.35 FEET; (L107)
SOUTH 54 DEGREES 06 MINUTES 28 SECONDS EAST 93.75 FEET; (L108)
SOUTH 83 DEGREES 27 MINUTES 45 SECONDS EAST 82.95 FEET; (L109)
SOUTH 75 DEGREES 35 MINUTES 49 SECONDS EAST 363.20 FEET; (L110)
SOUTH 74 DEGREES 45 MINUTES 03 SECONDS EAST 631.98 FEET; (L111)
SOUTH 77 DEGREES 16 MINUTES 42 SECONDS EAST 136.73 FEET; (L112)
SOUTH 68 DEGREES 44 MINUTES 03 SECONDS EAST 222.22 FEET; (L113)
SOUTH 63 DEGREES 26 MINUTES 54 SECONDS EAST 330.67 FEET; (L114)
SOUTH 68 DEGREES 42 MINUTES 55 SECONDS EAST 2064.65 FEET; (L115)
SOUTH 76 DEGREES 49 MINUTES 43 SECONDS EAST 134.63 FEET; (L116)
SOUTH 57 DEGREES 57 MINUTES 48 SECONDS EAST 115.44 FEET; (L117)
SOUTH 68 DEGREES 56 MINUTES 37 SECONDS EAST 516.56 FEET; (L118)
SOUTH 76 DEGREES 32 MINUTES 56 SECONDS EAST 248.91 FEET, (L119)

crossing State Route #3431, to a corner located in the north right-of-way line of West Cumberland Gap Parkway;

SOUTH 69 DEGREES 31 MINUTES 30 SECONDS EAST 467.08 FEET; (L120)
SOUTH 59 DEGREES 11 MINUTES 04 SECONDS EAST 301.91 FEET; (L121)
SOUTH 55 DEGREES 29 MINUTES 13 SECONDS EAST 348.69 FEET; (L122)
SOUTH 43 DEGREES 18 MINUTES 43 SECONDS EAST 378.19 FEET; (L123)
SOUTH 48 DEGREES 17 MINUTES 17 SECONDS EAST 292.55 FEET; (L124)
SOUTH 39 DEGREES 59 MINUTES 33 SECONDS EAST 89.84 FEET; (L125)
SOUTH 39 DEGREES 17 MINUTES 39 SECONDS EAST 579.90 FEET; (L126)
SOUTH 51 DEGREES 25 MINUTES 30 SECONDS EAST 299.74 FEET, (L127)

crossing U. S. Route #25, to a three and one-quarter (3.25) inch aluminum monument stamped "City of London Corporate Limits" located in the north right-of-way line of West Cumberland Gap Parkway, having a State Plane Coordinate of **1,875,390.71 NORTH** and **2,127,050.82 EAST**;

Thence, crossing East Cumberland Gap Parkway, **SOUTH 65 DEGREES 12 MINUTES 32 SECONDS WEST 374.19 FEET (L128)** to a three and one-quarter (3.25) inch aluminum monument stamped "City of London Corporate Limits" located in the south right-of-way line of East Cumberland Gap Parkway, having a State Plane Coordinate of **1,875,233.81 NORTH** and **2,126,711.12 EAST**;

Thence, meandering with the south right-of-way lines of East Cumberland Gap Parkway, the following bearings and distances;

NORTH 39 DEGREES 23 MINUTES 24 SECONDS WEST 294.76 FEET, (L129)
crossing U.S. Route #25 to a corner located in the south right-of-way line of West Cumberland Gap Parkway;

NORTH 32 DEGREES 43 MINUTES 06 SECONDS WEST 119.01 FEET; (L130)
NORTH 46 DEGREES 08 MINUTES 22 SECONDS WEST 367.15 FEET; (L131)
NORTH 40 DEGREES 57 MINUTES 29 SECONDS WEST 529.70 FEET; (L132)
NORTH 49 DEGREES 25 MINUTES 52 SECONDS WEST 521.95 FEET; (L133)
NORTH 71 DEGREES 55 MINUTES 12 SECONDS WEST 241.64 FEET; (L134)
NORTH 65 DEGREES 42 MINUTES 08 SECONDS WEST 571.91 FEET, (L135)

crossing State Route #3431, to a corner located in the south right-of-way line of West Cumberland Gap Parkway;

NORTH 66 DEGREES 47 MINUTES 22 SECONDS WEST 533.01 FEET; (L136)
NORTH 76 DEGREES 13 MINUTES 42 SECONDS WEST 239.55 FEET; (L137)
NORTH 60 DEGREES 38 MINUTES 43 SECONDS WEST 171.30 FEET; (L138)
NORTH 69 DEGREES 03 MINUTES 46 SECONDS WEST 971.36 FEET; (L139)
NORTH 66 DEGREES 36 MINUTES 54 SECONDS WEST 211.15 FEET; (L140)
NORTH 69 DEGREES 14 MINUTES 10 SECONDS WEST 495.31 FEET (L141)

to a fence post corner located in the south right-of-way line of West Cumberland Gap Parkway, having a State Plane Coordinate of **1,877,823.52 NORTH** and **2,122,264.33 EAST**;

Thence, continuing to meander with the south right-of-way lines of West Cumberland Gap Parkway, the following bearings and distances;

NORTH 68 DEGREES 13 MINUTES 18 SECONDS WEST 465.68 FEET; (L142)
NORTH 70 DEGREES 48 MINUTES 27 SECONDS WEST 355.31 FEET; (L143)
NORTH 72 DEGREES 44 MINUTES 27 SECONDS WEST 168.38 FEET; (L144)
NORTH 62 DEGREES 05 MINUTES 40 SECONDS WEST 225.34 FEET; (L145)
NORTH 74 DEGREES 11 MINUTES 29 SECONDS WEST 580.95 FEET; (L146)
NORTH 80 DEGREES 15 MINUTES 20 SECONDS WEST 278.91 FEET; (L147)
NORTH 83 DEGREES 55 MINUTES 57 SECONDS WEST 120.13 FEET; (L148)
NORTH 75 DEGREES 39 MINUTES 49 SECONDS WEST 379.92 FEET; (L149)
NORTH 76 DEGREES 20 MINUTES 39 SECONDS WEST 191.24 FEET (L150)
to a fence post corner located at the intersection of the south right-of-way line of West Cumberland Gap Parkway and the east right-of-way line of Interstate Route #75, having a State Plane Coordinate of **1,878,625.92 NORTH** and **2,119,629.14 EAST;**

Thence, meandering with the east right-of-way lines of Interstate Route #75, the following bearings and distances;

SOUTH 27 DEGREES 39 MINUTES 56 SECONDS WEST 208.95 FEET; (L151)
SOUTH 39 DEGREES 05 MINUTES 05 SECONDS WEST 173.02 FEET; (L152)
SOUTH 29 DEGREES 21 MINUTES 26 SECONDS WEST 215.08 FEET; (L153)
SOUTH 09 DEGREES 32 MINUTES 16 SECONDS WEST 651.08 FEET (L154)
to a three and one-quarter (3.25) inch aluminum monument stamped "City of London Corporate Limits" located in the east right-of-way line of Interstate Route 75, having a State Plane Coordinate of **1,877,477.03 NORTH** and **2,119,209.72 EAST;**

Thence, crossing Interstate Route #75, **NORTH 76 DEGREES 46 MINUTES 38 SECONDS WEST 320.95 FEET (L155)** to a three and one-quarter (3.25) inch aluminum monument stamped "City of London Corporate Limits" located in the west right-of-way line of Interstate Route #75, having a State Plane Coordinate of **1,877,550.44 NORTH** and **2,118,897.28 EAST;**

Thence, meandering with the west right-of-way lines of Interstate Route #75, the following bearings and distances;

NORTH 01 DEGREES 57 MINUTES 23 SECONDS EAST 398.65 FEET; (L156)
NORTH 13 DEGREES 33 MINUTES 57 SECONDS WEST 942.51 FEET (L157)
to a corner located at the intersection of the west right-of-way line of Interstate Route #75 and the south right-of-way line of State Route #770;

Thence, meandering with the south right-of-way lines of State Route #770, the following bearings and distances;

NORTH 75 DEGREES 43 MINUTES 20 SECONDS WEST 541.04 FEET; (L158)
A CURVE to the **LEFT** having an **ARC LENGTH** of **1015.31 FEET**, a **RADIUS** of **680.00 FEET**, a **CHORD BEARING** and **DISTANCE** of **SOUTH 36 DEGREES 48 MINUTES 45 SECONDS WEST 923.59 FEET; (C1)**
SOUTH 89 DEGREES 00 MINUTES 10 SECONDS WEST 103.26 FEET (L159)
crossing East City Dam Road, to a corner located in the south right-of-way line of State Route #770;

NORTH 54 DEGREES 34 MINUTES 06 SECONDS WEST 47.72 FEET; (L160)
SOUTH 37 DEGREES 19 MINUTES 12 SECONDS WEST 316.73 FEET; (L161)
SOUTH 54 DEGREES 45 MINUTES 30 SECONDS WEST 242.96 FEET; (L162)
SOUTH 69 DEGREES 03 MINUTES 42 SECONDS WEST 272.30 FEET; (L163)
SOUTH 89 DEGREES 10 MINUTES 30 SECONDS WEST 421.13 FEET; (L164)
NORTH 89 DEGREES 24 MINUTES 47 SECONDS WEST 288.08 FEET (L165)
to a corner located at the approximate intersection of the south right-of-way line of State Route #770 and the approximate centerline of Laurel River, having a State Plane Coordinate of **1,877,792.43 NORTH** and **2,116,116.01 EAST;**

Thence, crossing State Route #770 and with the approximate centerline of Laurel River, **NORTH 00 DEGREES 35 MINUTES 13 SECONDS EAST 288.00 FEET (L166)** to a corner located at the approximate intersection of the north right-of-way line of State Route #770 and the approximate centerline of Laurel River, having a State Plane Coordinate of **1,878,080.42 NORTH** and **2,116,118.96 EAST;**

Thence, continuing with the north right-of-way lines of State Route #770, the following bearings and distances;

SOUTH 89 DEGREES 38 MINUTES 03 SECONDS EAST 337.47 FEET; (L167)
SOUTH 88 DEGREES 09 MINUTES 56 SECONDS EAST 331.74 FEET; (L168)
NORTH 77 DEGREES 32 MINUTES 29 SECONDS EAST 97.06 FEET; (L169)
NORTH 66 DEGREES 58 MINUTES 18 SECONDS EAST 119.93 FEET; (L170)
NORTH 54 DEGREES 04 MINUTES 12 SECONDS EAST 112.27 FEET; (L171)
NORTH 42 DEGREES 14 MINUTES 57 SECONDS EAST 118.47 FEET; (L172)
NORTH 35 DEGREES 30 MINUTES 49 SECONDS EAST 183.90 FEET; (L173)
NORTH 37 DEGREES 28 MINUTES 45 SECONDS EAST 360.76 FEET; (L174)
NORTH 37 DEGREES 42 MINUTES 36 SECONDS EAST 230.79 FEET; (L175)
NORTH 41 DEGREES 13 MINUTES 00 SECONDS EAST 57.57 FEET; (L176)
NORTH 49 DEGREES 36 MINUTES 17 SECONDS EAST 98.17 FEET; (L177)
NORTH 71 DEGREES 15 MINUTES 31 SECONDS EAST 229.06 FEET; (L178)
NORTH 73 DEGREES 49 MINUTES 15 SECONDS EAST 131.09 FEET; (L179)
NORTH 83 DEGREES 24 MINUTES 03 SECONDS EAST 122.99 FEET; (L180)
NORTH 14 DEGREES 44 MINUTES 19 SECONDS EAST 38.14 FEET; (L181)
SOUTH 67 DEGREES 56 MINUTES 06 SECONDS EAST 78.78 FEET; (L182)
NORTH 73 DEGREES 09 MINUTES 58 SECONDS EAST 26.24 FEET; (L183)
SOUTH 78 DEGREES 17 MINUTES 27 SECONDS EAST 237.40 FEET; (L184)
SOUTH 79 DEGREES 05 MINUTES 21 SECONDS EAST 175.94 FEET (L185)

to a one and one-half (1 ½) inch metal pipe located at the intersection of the north right-of-way line of State Route #770 and the west right-of-way line of Interstate Route #75, having a State Plane Coordinate of **1,879,072.22 NORTH** and **2,118,721.93 EAST;**

Thence, meandering with the west right-of-way lines of Interstate Route #75, the following bearings and distances;

NORTH 27 DEGREES 11 MINUTES 15 SECONDS EAST 613.39 FEET; (L186)
 NORTH 10 DEGREES 23 MINUTES 06 SECONDS EAST 343.25 FEET; (L187)
 NORTH 14 DEGREES 08 MINUTES 45 SECONDS EAST 363.14 FEET; (L188)
 NORTH 06 DEGREES 31 MINUTES 28 SECONDS EAST 332.27 FEET; (L189)
 NORTH 13 DEGREES 29 MINUTES 39 SECONDS EAST 152.25 FEET; (L190)
 NORTH 00 DEGREES 51 MINUTES 16 SECONDS EAST 402.32 FEET; (L191)
 NORTH 08 DEGREES 13 MINUTES 26 SECONDS EAST 646.71 FEET; (L192)
 NORTH 13 DEGREES 17 MINUTES 05 SECONDS EAST 349.73 FEET; (L193)
 NORTH 07 DEGREES 54 MINUTES 48 SECONDS EAST 514.33 FEET; (L194)
 NORTH 10 DEGREES 37 MINUTES 11 SECONDS WEST 176.04 FEET; (L195)
 NORTH 02 DEGREES 34 MINUTES 57 SECONDS EAST 215.42 FEET; (L196)
 NORTH 08 DEGREES 06 MINUTES 42 SECONDS EAST 58.82 FEET; (L197)
 NORTH 27 DEGREES 03 MINUTES 41 SECONDS EAST 209.28 FEET; (L198)
 NORTH 08 DEGREES 24 MINUTES 55 SECONDS EAST 2139.98 FEET;
 (L199)
 NORTH 07 DEGREES 36 MINUTES 37 SECONDS EAST 1090.55 FEET;
 (L200)
 NORTH 08 DEGREES 50 MINUTES 41 SECONDS EAST 385.05 FEET; (L201)
 NORTH 21 DEGREES 12 MINUTES 23 SECONDS EAST 403.34 FEET; (L202)
 NORTH 13 DEGREES 52 MINUTES 59 SECONDS EAST 303.77 FEET; (L203)
 NORTH 07 DEGREES 06 MINUTES 49 SECONDS EAST 420.67 FEET (L204)
 to a corner located at the approximate centerline of the Laurel River and in west
 right-of-way line of Interstate Route #75, having a State Plane Coordinate of
1,887,977.42 NORTH and 2,120,344.24 EAST;

Thence, continuing to meander with the west right-of-way lines of Interstate Route #75, the following bearings and distances;

NORTH 14 DEGREES 11 MINUTES 34 SECONDS EAST 278.28 FEET; (L205)
 NORTH 20 DEGREES 20 MINUTES 34 SECONDS EAST 402.03 FEET; (L206)
 NORTH 13 DEGREES 58 MINUTES 15 SECONDS EAST 497.63 FEET; (L207)
 NORTH 08 DEGREES 03 MINUTES 48 SECONDS EAST 202.13 FEET; (L208)
 NORTH 19 DEGREES 51 MINUTES 00 SECONDS EAST 202.64 FEET; (L209)
 NORTH 14 DEGREES 17 MINUTES 05 SECONDS EAST 552.56 FEET; (L210)
 NORTH 00 DEGREES 29 MINUTES 25 SECONDS WEST 204.26 FEET; (L211)
 NORTH 37 DEGREES 20 MINUTES 31 SECONDS EAST 162.32 FEET; (L212)
 NORTH 14 DEGREES 29 MINUTES 36 SECONDS EAST 497.16 FEET; (L213)
 NORTH 09 DEGREES 54 MINUTES 24 SECONDS WEST 304.15 FEET; (L214)
 NORTH 35 DEGREES 28 MINUTES 22 SECONDS EAST 342.91 FEET; (L215)
 NORTH 13 DEGREES 47 MINUTES 22 SECONDS EAST 399.52 FEET; (L216)
 NORTH 04 DEGREES 54 MINUTES 51 SECONDS EAST 605.16 FEET; (L217)
 NORTH 27 DEGREES 38 MINUTES 49 SECONDS EAST 414.40 FEET; (L218)
 NORTH 13 DEGREES 12 MINUTES 44 SECONDS EAST 496.21 FEET; (L219)
 NORTH 14 DEGREES 07 MINUTES 04 SECONDS EAST 1104.38 FEET (L220)
 to a right-of-way monument located in the west right-of-way line of Interstate
 Route #75, having a State Plane Coordinate of **1,894,338.89 NORTH and
 2,121,995.81 EAST;**

Thence, continuing to meander with the west right-of-way lines of Interstate Route #75, the following bearings and distances;

NORTH 13 DEGREES 01 MINUTES 12 SECONDS EAST 114.79 FEET (L221)
crossing State Route #552 to a point located in west right-of-way line of Interstate Route #75;

NORTH 14 DEGREES 04 MINUTES 49 SECONDS EAST 75.83 FEET; (L222)
NORTH 08 DEGREES 33 MINUTES 57 SECONDS WEST 402.84 FEET; (L223)
NORTH 17 DEGREES 08 MINUTES 34 SECONDS EAST 308.62 FEET; (L224)
NORTH 11 DEGREES 24 MINUTES 58 SECONDS WEST 379.26 FEET; (L225)
NORTH 13 DEGREES 29 MINUTES 53 SECONDS EAST 472.49 FEET; (L226)
NORTH 07 DEGREES 12 MINUTES 17 SECONDS WEST 721.78 FEET; (L227)
NORTH 04 DEGREES 00 MINUTES 19 SECONDS EAST 358.45 FEET; (L228)
NORTH 01 DEGREES 43 MINUTES 46 SECONDS EAST 671.37 FEET; (L229)
NORTH 05 DEGREES 48 MINUTES 29 SECONDS EAST 583.52 FEET; (L230)
NORTH 03 DEGREES 59 MINUTES 22 SECONDS EAST 335.86 FEET; (L231)
NORTH 06 DEGREES 41 MINUTES 58 SECONDS EAST 589.83 FEET; (L232)
NORTH 06 DEGREES 33 MINUTES 31 SECONDS EAST 1007.50 FEET;
(L233)

NORTH 04 DEGREES 29 MINUTES 56 SECONDS EAST 870.86 FEET (L234)
to a corner located at the approximate intersection of the west right-of-way line of Interstate Route #75 and the centerline of Little Laurel River;

Thence, continuing with the west right-of-way lines of Interstate Route #75 and meandering with the approximate centerline of Little Laurel River, the following bearings and distances;

SOUTH 79 DEGREES 37 MINUTES 59 SECONDS WEST 63.26 FEET; (L235)
NORTH 57 DEGREES 40 MINUTES 36 SECONDS WEST 25.69 FEET; (L236)
NORTH 18 DEGREES 52 MINUTES 08 SECONDS WEST 58.05 FEET; (L237)
NORTH 16 DEGREES 48 MINUTES 34 SECONDS EAST 52.98 FEET; (L238)
NORTH 07 DEGREES 14 MINUTES 52 SECONDS EAST 65.39 FEET; (L239)
NORTH 20 DEGREES 12 MINUTES 38 SECONDS EAST 71.63 FEET; (L240)
NORTH 41 DEGREES 36 MINUTES 43 SECONDS EAST 56.79 FEET; (L241)
NORTH 29 DEGREES 17 MINUTES 29 SECONDS EAST 77.08 FEET; (L242)
NORTH 05 DEGREES 47 MINUTES 18 SECONDS EAST 81.79 FEET; (L243)
NORTH 00 DEGREES 22 MINUTES 59 SECONDS WEST 211.67 FEET; (L244)
NORTH 21 DEGREES 22 MINUTES 41 SECONDS WEST 122.85 FEET; (L245)
NORTH 62 DEGREES 36 MINUTES 16 SECONDS WEST 148.66 FEET; (L246)
NORTH 64 DEGREES 11 MINUTES 13 SECONDS WEST 78.55 FEET (L247) to
a corner located at the approximate intersection of the centerlines of Little Laurel River and Ward Branch;

Thence, continuing with the west right-of-way lines of Interstate Route #75 and meandering with the approximate centerline of Ward Branch, the following bearings and distances;

NORTH 09 DEGREES 27 MINUTES 19 SECONDS EAST 107.61 FEET; (L248)

NORTH 16 DEGREES 22 MINUTES 40 SECONDS WEST 83.59 FEET; (L249)
 NORTH 48 DEGREES 47 MINUTES 33 SECONDS WEST 87.72 FEET; (L250)
 NORTH 19 DEGREES 02 MINUTES 39 SECONDS WEST 68.62 FEET; (L251)
 NORTH 19 DEGREES 58 MINUTES 09 SECONDS EAST 55.21 FEET; (L252)
 NORTH 28 DEGREES 27 MINUTES 21 SECONDS EAST 79.14 FEET; (L253)
 NORTH 10 DEGREES 42 MINUTES 18 SECONDS EAST 44.41 FEET; (L254)
 NORTH 53 DEGREES 49 MINUTES 16 SECONDS WEST 75.92 FEET; (L255)
 NORTH 80 DEGREES 41 MINUTES 21 SECONDS WEST 212.04 FEET; (L256)
 NORTH 64 DEGREES 43 MINUTES 25 SECONDS WEST 185.06 FEET; (L257)
 NORTH 54 DEGREES 59 MINUTES 12 SECONDS WEST 195.45 FEET; (L258)
 NORTH 09 DEGREES 27 MINUTES 19 SECONDS EAST 92.08 FEET; (L259)
 NORTH 52 DEGREES 34 MINUTES 25 SECONDS EAST 107.94 FEET; (L260)
 SOUTH 89 DEGREES 22 MINUTES 12 SECONDS EAST 152.95 FEET; (L261)
 NORTH 79 DEGREES 17 MINUTES 05 SECONDS EAST 110.47 FEET; (L262)
 NORTH 50 DEGREES 35 MINUTES 10 SECONDS EAST 128.46 FEET; (L263)
 NORTH 05 DEGREES 40 MINUTES 46 SECONDS WEST 139.47 FEET; (L264)
 NORTH 65 DEGREES 27 MINUTES 03 SECONDS WEST 104.23 FEET; (L265)
 NORTH 48 DEGREES 34 MINUTES 19 SECONDS WEST 176.95 FEET; (L266)
 NORTH 39 DEGREES 35 MINUTES 21 SECONDS WEST 90.85 FEET; (L267)
 NORTH 05 DEGREES 01 MINUTES 13 SECONDS WEST 110.26 FEET; (L268)
 NORTH 17 DEGREES 27 MINUTES 44 SECONDS EAST 68.33 FEET; (L269)
 NORTH 36 DEGREES 41 MINUTES 54 SECONDS EAST 183.66 FEET; (L270)
 NORTH 11 DEGREES 47 MINUTES 37 SECONDS WEST 82.62 FEET; (L271)
 NORTH 25 DEGREES 13 MINUTES 25 SECONDS EAST 93.40 FEET; (L272)
 NORTH 03 DEGREES 02 MINUTES 14 SECONDS WEST 136.59 FEET; (L273)
 NORTH 15 DEGREES 30 MINUTES 38 SECONDS WEST 55.49 FEET; (L274)
 NORTH 90 DEGREES 00 MINUTES 00 SECONDS WEST 43.42 FEET; (L275)
 SOUTH 50 DEGREES 10 MINUTES 23 SECONDS WEST 56.54 FEET; (L276)
 SOUTH 29 DEGREES 50 MINUTES 25 SECONDS WEST 75.14 FEET; (L277)
 SOUTH 22 DEGREES 58 MINUTES 23 SECONDS WEST 86.53 FEET; (L278)
 SOUTH 66 DEGREES 16 MINUTES 52 SECONDS WEST 54.01 FEET; (L279)
 NORTH 76 DEGREES 16 MINUTES 58 SECONDS WEST 50.90 FEET; (L280)
 NORTH 54 DEGREES 26 MINUTES 30 SECONDS WEST 72.65 FEET; (L281)
 NORTH 28 DEGREES 40 MINUTES 04 SECONDS WEST 72.91 FEET; (L282)
 NORTH 01 DEGREES 14 MINUTES 40 SECONDS WEST 111.07 FEET; (L283)
 NORTH 12 DEGREES 44 MINUTES 26 SECONDS WEST 169.54 FEET; (L284)
 NORTH 03 DEGREES 34 MINUTES 25 SECONDS EAST 96.75 FEET; (L285)
 NORTH 21 DEGREES 58 MINUTES 33 SECONDS WEST 67.68 FEET; (L286)
 NORTH 39 DEGREES 27 MINUTES 04 SECONDS WEST 53.15 FEET; (L287)
 NORTH 70 DEGREES 48 MINUTES 26 SECONDS WEST 29.37 FEET; (L288)
 SOUTH 51 DEGREES 19 MINUTES 08 SECONDS WEST 30.90 FEET; (L289)
 SOUTH 25 DEGREES 19 MINUTES 46 SECONDS WEST 50.75 FEET; (L290)
 SOUTH 09 DEGREES 17 MINUTES 11 SECONDS WEST 67.27 FEET; (L291)
 SOUTH 32 DEGREES 10 MINUTES 34 SECONDS WEST 38.50 FEET; (L292)
 NORTH 79 DEGREES 06 MINUTES 24 SECONDS WEST 31.93 FEET; (L293)
 NORTH 48 DEGREES 47 MINUTES 32 SECONDS WEST 25.65 FEET; (L294)

NORTH 28 DEGREES 09 MINUTES 38 SECONDS WEST 38.33 FEET; (L295)
NORTH 09 DEGREES 27 MINUTES 19 SECONDS WEST 66.08 FEET; (L296)
NORTH 01 DEGREES 19 MINUTES 52 SECONDS EAST 103.83 FEET; (L970)
NORTH 08 DEGREES 36 MINUTES 33 SECONDS WEST 40.29 FEET; (L298)
NORTH 19 DEGREES 33 MINUTES 34 SECONDS EAST 57.64 FEET; (L299)
NORTH 14 DEGREES 01 MINUTES 33 SECONDS WEST 29.86 FEET; (L300)
NORTH 42 DEGREES 22 MINUTES 33 SECONDS WEST 37.58 FEET; (L301)
NORTH 01 DEGREES 47 MINUTES 19 SECONDS EAST 38.64 FEET; (L302)

Thence, leaving Ward Branch and continuing to meander with the west right-of-way lines of Interstate Route #75, the following bearings and distances;

NORTH 68 DEGREES 02 MINUTES 09 SECONDS EAST 865.84 FEET; (L303)
NORTH 31 DEGREES 42 MINUTES 03 SECONDS EAST 155.72 FEET (L304)
to an iron pin #2776, located in the west right-of-way line of Interstate Route #75, having a State Plane Coordinate of **1,905,181.00 NORTH** and **2,122,073.27 EAST;**

Thence, continuing to meander with the west right-of-way lines of Interstate Route #75, the following bearings and distances;

NORTH 06 DEGREES 27 MINUTES 41 SECONDS EAST 831.76 FEET; (L305)
NORTH 03 DEGREES 05 MINUTES 42 SECONDS EAST 2020.29 FEET;
(L306)
NORTH 01 DEGREES 49 MINUTES 56 SECONDS WEST 253.95 FEET; (L307)
NORTH 08 DEGREES 24 MINUTES 20 SECONDS EAST 251.34 FEET; (L308)
NORTH 02 DEGREES 50 MINUTES 34 SECONDS EAST 597.40 FEET; (L309)
NORTH 00 DEGREES 05 MINUTES 32 SECONDS WEST 161.05 FEET; (L310)
NORTH 01 DEGREES 13 MINUTES 32 SECONDS WEST 157.04 FEET; (L311)
NORTH 03 DEGREES 45 MINUTES 25 SECONDS WEST 188.04 FEET; (L312)
NORTH 06 DEGREES 05 MINUTES 43 SECONDS WEST 333.74 FEET; (L313)
NORTH 07 DEGREES 34 MINUTES 32 SECONDS WEST 1158.21 FEET;
(L314)
NORTH 16 DEGREES 51 MINUTES 51 SECONDS WEST 298.03 FEET; (L315)
NORTH 06 DEGREES 35 MINUTES 32 SECONDS WEST 102.80 FEET; (L316)
NORTH 02 DEGREES 00 MINUTES 51 SECONDS WEST 363.12 FEET; (L317)
NORTH 07 DEGREES 25 MINUTES 45 SECONDS WEST 456.43 FEET; (L318)
NORTH 04 DEGREES 15 MINUTES 44 SECONDS WEST 452.71 FEET; (L319)
NORTH 01 DEGREES 52 MINUTES 21 SECONDS WEST 534.22 FEET; (L320)
NORTH 17 DEGREES 58 MINUTES 50 SECONDS WEST 278.31 FEET; (L321)
NORTH 09 DEGREES 29 MINUTES 25 SECONDS EAST 324.10 FEET; (L322)
NORTH 03 DEGREES 08 MINUTES 54 SECONDS WEST 986.14 FEET; (L323)
NORTH 01 DEGREES 52 MINUTES 02 SECONDS WEST 607.48 FEET; (L324)
NORTH 02 DEGREES 47 MINUTES 38 SECONDS WEST 1885.88 FEET;
(L325)
NORTH 03 DEGREES 39 MINUTES 00 SECONDS WEST 958.07 FEET; (L326)
NORTH 04 DEGREES 43 MINUTES 50 SECONDS WEST 783.34 FEET (L327)
to a fence post corner located in west right-of-way line of Interstate Route #75,

having a State Plane Coordinate of **1,919,094.42 NORTH** and **2,121,585.05 EAST**;

Thence, continuing to meander with the west right-of-way lines of Interstate Route #75, the following bearings and distances;

NORTH 04 DEGREES 58 MINUTES 28 SECONDS WEST 757.36 FEET (L328) crossing State Route #363 to a point located in west right-of-way line of Interstate Route #75;

NORTH 15 DEGREES 21 MINUTES 56 SECONDS WEST 168.14 FEET; (L329)

NORTH 03 DEGREES 11 MINUTES 58 SECONDS WEST 814.15 FEET; (L330)

NORTH 07 DEGREES 09 MINUTES 56 SECONDS WEST 166.06 FEET; (L331)

NORTH 05 DEGREES 35 MINUTES 51 SECONDS WEST 1498.21 FEET; (L332)


NORTH 01 DEGREES 15 MINUTES 40 SECONDS WEST 633.89 FEET; (L333)

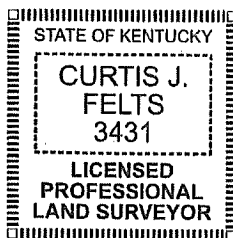
NORTH 05 DEGREES 03 MINUTES 11 SECONDS WEST 663.66 FEET; (L334)

NORTH 06 DEGREES 12 MINUTES 31 SECONDS WEST 818.46 FEET (L335)

to a three and one-quarter (3.25) inch aluminum monument stamped "City of London Corporate Limits", located in the west right-of-way line of Interstate Route #75, having a State Plane Coordinate of **1,924,588.23 NORTH** and **2,121,101.63 EAST**;

Thence, crossing Interstate Route #75, **NORTH 77 DEGREES 11 MINUTES 01 SECONDS EAST 281.35 FEET (L336)** to the corner of the **BEGINNING** containing **548.74 ACRES** more or less, by calculation. This city annexation description was prepared from survey plat maps, highway right-of-way plans, GPS field data and information provided by the City of London, Kentucky, dated April 07, 2020, by Kentucky Surveys, Inc., Curtis J. Felts, Licensed Professional Surveyor #3431.


Curtis J. Felts
April 7, 2020



TRACT #2

A certain tract located at the intersection of Interstate Route #75 and West Cumberland Gap Parkway, and more particularly described as follows:

All hereinafter coordinates are referenced from Kentucky State Plane Coordinate System, South Zone, and referenced from the 1983 North American Datum. All hereinafter bearings and distances are referenced to the Kentucky State Plane Grid System.

BEGINNING at a three and one-quarter (3.25) inch aluminum monument stamped "City of London Corporate Limits", located approximately 0.39 mile north from the intersection of Interstate Route #75 and West Cumberland Gap Parkway, in the east right-of-way line of Interstate Route #75, having a State Plane Coordinate of **1,880,869.04 NORTH**, and **2,119,557.42 EAST**; Said monument also being a corner of the proposed annexation TRACT #1;

Thence, with the east right-of-way lines of Interstate Route #75 and the proposed annexation TRACT #1, the following bearings and distances;

SOUTH 08 DEGREES 55 MINUTES 53 SECONDS WEST 748.52 FEET; (L97)
SOUTH 03 DEGREES 48 MINUTES 20 SECONDS EAST 384.38 FEET; (L98)
SOUTH 13 DEGREES 13 MINUTES 06 SECONDS EAST 308.83 FEET; (L99)
SOUTH 05 DEGREES 11 MINUTES 00 SECONDS EAST 287.66 FEET; (L100)
SOUTH 10 DEGREES 09 MINUTES 29 SECONDS EAST 159.18 FEET; (L101)
SOUTH 21 DEGREES 40 MINUTES 55 SECONDS EAST 58.63 FEET; (L102)
SOUTH 48 DEGREES 44 MINUTES 01 SECONDS EAST 132.17 FEET (L103)
to a three and one-quarter (3.25) inch aluminum monument stamped "City of London Corporate Limits" having a State Plane Coordinate of **1,878,860.59 NORTH**, and **2,119,712.41 EAST**;

Thence, leaving the east right-of-way line of Interstate Route #75, with the proposed annexation TRACT #1 and meandering with the north right-of-way lines of West Cumberland Gap Parkway, the following bearings and distances;

SOUTH 74 DEGREES 17 MINUTES 40 SECONDS EAST 234.45 FEET; (L104)
SOUTH 71 DEGREES 56 MINUTES 32 SECONDS EAST 187.58 FEET; (L105)
NORTH 47 DEGREES 46 MINUTES 13 SECONDS EAST 53.81 FEET; (L106)
SOUTH 77 DEGREES 53 MINUTES 04 SECONDS EAST 19.55 FEET; (L337)

Thence, leaving the north right-of-way line of West Cumberland Gap Parkway, and the proposed annexation TRACT #1 and with the G & M Oil Company, Inc. property boundary lines, the following bearings and distances;

NORTH 49 DEGREES 26 MINUTES 24 SECONDS EAST 120.01 FEET; (L338)
NORTH 49 DEGREES 37 MINUTES 01 SECONDS EAST 701.36 FEET; (L339)
SOUTH 45 DEGREES 47 MINUTES 31 SECONDS EAST 275.26 FEET; (L340)
NORTH 42 DEGREES 47 MINUTES 28 SECONDS EAST 572.51 FEET; (L341)
NORTH 45 DEGREES 24 MINUTES 08 SECONDS WEST 56.82 FEET; (L342)
NORTH 42 DEGREES 38 MINUTES 55 SECONDS WEST 93.24 FEET; (L343)


NORTH 43 DEGREES 35 MINUTES 10 SECONDS WEST 82.37 FEET; (L344)
NORTH 43 DEGREES 09 MINUTES 16 SECONDS WEST 142.30 FEET; (L345)
NORTH 44 DEGREES 02 MINUTES 58 SECONDS WEST 146.98 FEET; (L346)
NORTH 53 DEGREES 42 MINUTES 19 SECONDS EAST 190.15 FEET; (L347)
NORTH 51 DEGREES 48 MINUTES 13 SECONDS EAST 585.81 FEET; (L348)
NORTH 49 DEGREES 51 MINUTES 48 SECONDS EAST 329.29 FEET (L349) to
a corner located in the west right-of-way line of State Route #1223;

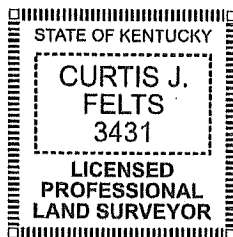
Thence, with the west right-of-way line of State Route #1223, **NORTH 25 DEGREES 18 MINUTES 14 SECONDS WEST 37.58 FEET (L350)** to an iron pin with plastic cap stamped #3276, having a State Plane Coordinate of **1,880,630.32 NORTH**, and **2,121,876.44 EAST**;

Thence, leaving the west right-of-way line of State Route #1223 and continuing with the G & M Oil Company, Inc. property boundary lines, the following bearings and distances;

NORTH 72 DEGREES 02 MINUTES 10 SECONDS WEST 186.61 FEET; (L351)
NORTH 69 DEGREES 36 MINUTES 36 SECONDS WEST 177.56 FEET; (L352)
NORTH 67 DEGREES 55 MINUTES 21 SECONDS WEST 177.85 FEET; (L353)
NORTH 65 DEGREES 08 MINUTES 21 SECONDS WEST 220.15 FEET; (L354)
NORTH 64 DEGREES 03 MINUTES 53 SECONDS WEST 345.05 FEET; (L355)
NORTH 56 DEGREES 06 MINUTES 07 SECONDS WEST 329.60 FEET; (L356)
NORTH 53 DEGREES 23 MINUTES 18 SECONDS WEST 166.08 FEET; (L357)
NORTH 76 DEGREES 35 MINUTES 51 SECONDS WEST 182.43 FEET; (L358)
NORTH 87 DEGREES 19 MINUTES 12 SECONDS WEST 122.91 FEET; (L359)
NORTH 76 DEGREES 26 MINUTES 18 SECONDS WEST 164.64 FEET; (L360)
SOUTH 24 DEGREES 29 MINUTES 06 SECONDS WEST 533.00 FEET; (L361)
SOUTH 70 DEGREES 25 MINUTES 15 SECONDS WEST 225.15 FEET (L362)

to the corner of the **BEGINNING** containing **91.00 ACRES** more or less, by calculation. This city annexation description was prepared from survey plat maps, highway right-of-way plans, record deeds, GPS field data and information provided by the City of London, Kentucky, dated April 07, 2020, by Kentucky Surveys, Inc., Curtis J. Felts, Licensed Professional Surveyor #3431.


Curtis J. Felts
April 7, 2020



OVERSIZE MAP INCLUDED WITH
SUBMISSION.

To research the map, contact the
Office of Secretary of State
or the County Clerk.