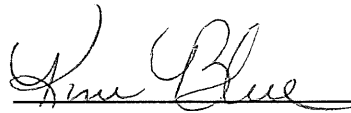


CITY OF
Madisonville

Kim Blue
CITY CLERK

I, Kim Blue do hereby certify that I am the duly qualified City Clerk of the City of Madisonville, Kentucky, and the following 5 pages of Resolution 2016-14 dated April 18, 2016 is a true, correct and complete copy duly adopted by the City Council at a duly convened meeting held on April 18, 2016, all as appears in the official records of said City.

WITNESS, my hand and Seal of Madisonville, Kentucky, this the 30th day of March, 2018.



Kim Blue, City Clerk

RECEIVED AND FILED
DATE April 5, 2018

ALISON LUNDERGAN GRIMES
SECRETARY OF STATE
COMMONWEALTH OF KENTUCKY
BY Handie Adkinson

**CITY OF MADISONVILLE
RESOLUTION R-2016-14**

A RESOLUTION ADOPTING AN ACCURATE AND LEGAL DESCRIPTION AND MAP OF TERRITORY PREVIOUSLY ANNEXED BY ORDINANCE

WHEREAS, the City of Madisonville has enacted numerous ordinances annexing property into the corporate limits of the City of Madisonville; and

WHEREAS, each individual annexation contains a prior survey often prepared by unknown individuals, and further references documentation that is no longer in existence, or that was annexed without benefit of an accurate drawing; and

WHEREAS, the City wishes to comply with the requirements of Amended KRS 81A.470, effective July 13, 2004; and

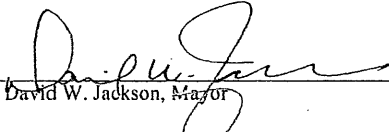
WHEREAS, the City in its original filing of Ordinance 1990-10-19 relied on a description with certain metes and bounds; and

WHEREAS, the City does not intend to amend or replace its prior annexation ordinances, but rather to interpret the defined legal boundaries of the territory previously annexed.

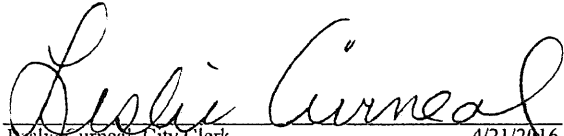
NOW THEREFORE, BE IT RESOLVED:

1. That the City Council of the City of Madisonville hereby adopts the new legal description and plat attached hereto as Exhibit "1" as prepared by Thomas W. Crabtree, Licensed Professional Land Surveyor No. 3227, for the Tom Reynolds Road Tract I as an accurate depiction of property previously annexed into the City of Madisonville by Ordinance 1990-10-19, a true and complete copy of which is attached as Exhibit "2", and hereby adopts said new legal description and plat as the official legal description and plat adopted by the City for all purposes when referencing the previous annexation.

ADOPTED on this 18th day of April, 2016.


David W. Jackson, Mayor

4/21/2016


Leslie Curmeal, City Clerk

4/21/2016

ATTEST:

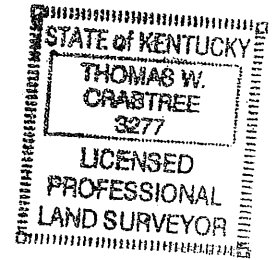
Clarification for Annexation
1990-10-19
City of Madisonville, Kentucky

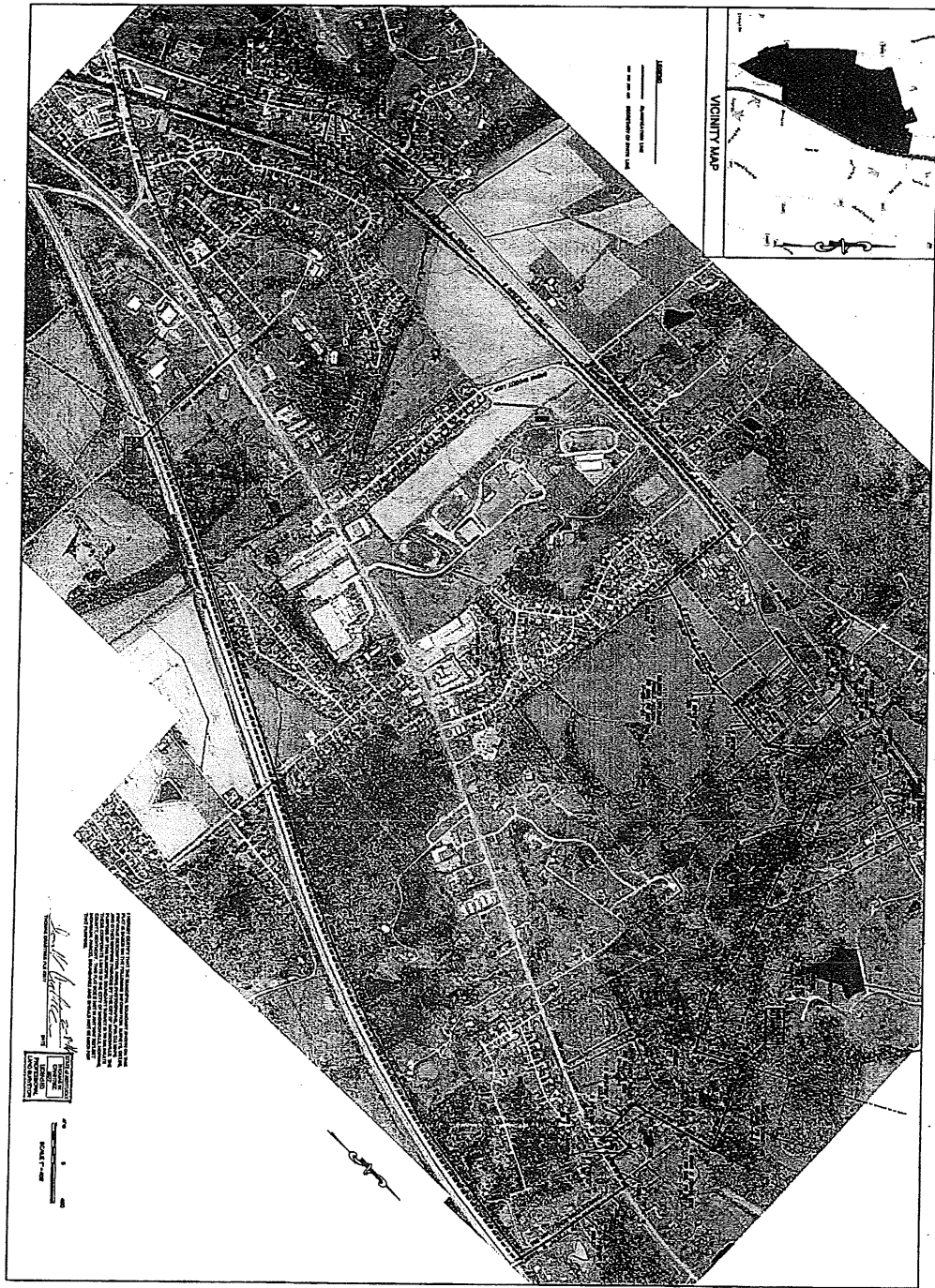
Beginning at a point in the south right of way line of Tom Reynolds road and the west right of way line of I-69 (Breathitt-Pennyrile Parkway) and having Kentucky state plane coordinates N:2023253.63 and E:1135376.50; thence, with the west right of way line of said I-69 the following calls: N 27°08'14" E for a distance of 1607.21' to a point; N 28°14'09" E for a distance of 1581.08' to a point; N 28°02'02" E for a distance of 1649.28' to a point; N 26°09'35" E for a distance of 662.08' to a point; N 21°47'49" E for a distance of 932.25' to a point; N 17°25'03" E for a distance of 1076.88' to a point; N 10°02'16" E for a distance of 903.46' to a point; N 09°55'18" E for a distance of 797.30' to a point in the south right of way line of Charles Lenin Road/ KY Highway 862; thence, with the south right of way line of said Charles Lenin Road/ KY Highway 862, the following calls; N 77°15'44" W for a distance of 610.01' to a point; N 77°50'47" W for a distance of 306.37' to a point; N 80°26'45" W for a distance of 359.23' to a point on the west side of Hanson Road/US Highway 41; thence, with said Highway 41, S 17°38'15" W for a distance of 302.81' to the northeast corner of Merita Bumpas; thence, with a line of said Bumpas; N 77°46'47" W for a distance of 217.75' to a point and S 01°44'00" W for a distance of 261.11' to the southwest corner of said Bumpas and a point in the north line of C. D. and Karen Palmer; thence, with the north line of said Palmer, S 89°54'00" W for a distance of 333.21' to a corner of Ben and Mevelyn House; thence, with a line of said House, N 13°32'00" W for a distance of 900.71' to a northeast corner of said House and southeast corner of Clarence Scisney Jr.; thence, with the south line of said Scisney, S 66°46'00" W for a distance of 882.96' to a point in the east line of The Brown Badgett Foundation, Inc., and having Kentucky state plane coordinates N:2031976.96 and E:1135971.44; thence S 26°32'40" E for a distance of 494.45' to the southeast corner of said Badgett; thence, with the south line of said Badgett, S 61°35'00" W for a distance of 593.48' to the northwest corner of said House and being the northeast corner of Phillip and Shayna Renfro; thence, with the north line of said Renfro, S 85°35'33" W for a distance of 397.73' to a point; S 73°16'46" W for a distance of 539.02' to the southwest corner of said Badgett and being the southeast corner of Andrea Gregory and Joseph Hines; thence, with the south line of said Gregory and Hines, S 72°31'35" W for a distance of 490.99' to a point; thence, S 71°27'49" W for a distance of 434.69' to the southeast corner of Johnny and Janet Page; thence, with the south line of said Page, S 72°01'17" W for a distance of 192.28' to a point; S 72°33'49" W for a distance of 423.10' to the northeast corner of Robert and Mae Rickard; thence, with the east line of said Rickard, S 01°20'02" E for a distance of 248.20' to the southeast corner of said Rickard and a corner of Phillip and Shayna Renfro; thence S 25°42'29" E for a distance of 418.62' to the northeast corner of Randy and Mildred Littlepage and being a point 750' east of Brown Badgett Loop; thence, S 08°02'59" W for a distance of 516.84' to the southeast corner of said Littlepage; thence, with a line that divides the property of Mildred Littlepage and Pamela Helton, and being 750' east of Brown Badgett Loop,

S 00°42'49" E for a distance of 309.10' to a point; S 16°27'55" W for a distance of 423.64' to a point; S 27°16'48" W for a distance of 429.36' to a point; S 16°39'34" W for a distance of 262.52' to a point in the south line of said Littlepage-Helton; thence, with the south line of said Littlepage-Helton, N 81°50'51" W for a distance of 851.65' to a point on the west right of way line of CSX Railroad; thence, with the right of way line of said CSX Railroad, the following calls: S 06°59'05" W for a distance of 670.20' to a point; S 04°05'50" W for a distance of 638.06' to a point; S 00°42'24" W for a distance of 1160.25' to a point; S 00°57'27" W for a distance of 1139.41' to a point; S 00°15'12" E for a distance of 1014.74' to the northeast corner of Summerfield Subdivision; thence, with the north line of said Summerfield Subdivision and crossing Hwy 1069/Stagecoach Road to a corner to the City of Madisonville City limits, N 84°05'03" W for a distance of 288.77' to a point in the west right of way line of Hwy 1069/Stagecoach Road; thence, with the right of way line of said Hwy 1069/Stagecoach Road, the following calls: S 01°04'32" W for a distance of 109.07' to a point; S 00°13'03" E for a distance of 57.19' to a point; S 04°17'54" E for a distance of 110.64' to a point; S 08°18'13" E for a distance of 126.85' to a point; S 09°24'03" E for a distance of 294.29' to a point; S 10°36'59" E for a distance of 269.44' to a point; S 12°53'53" E for a distance of 114.75' to a point; S 17°02'46" E for a distance of 56.21' to a point; S 21°42'56" E for a distance of 55.95' to a point; S 26°49'08" E for a distance of 55.28' to a point; S 31°08'46" E for a distance of 53.99' to a point; S 36°00'40" E for a distance of 40.76' to the northeast corner of Lot 6, Glenview Subdivision; thence, with the line of said Glenview Subdivision, the following calls: S 61°58'10" W for a distance of 174.60' to a point; S 34°31'21" E for a distance of 447.45' to a point; S 22°54'38" E for a distance of 110.00' to a point; S 27°23'20" E for a distance of 130.00' to a point; N 64°02'40" E for a distance of 190.00' to a point in the west right of way line of Hwy 1069/Stagecoach Road; thence, with right of way line of said Hwy 1069/Stagecoach Road, S 25°00'28" E for a distance of 491.33' to a point; S 23°56'27" E for a distance of 1003.59' to the right of way intersection of Hwy 1069/Stagecoach Road and N. Main Street/U.S. Hwy 41; thence, with the west right of way line of said N. Main Street/U.S. Hwy 41, the following calls: N 32°37'30" E for a distance of 563.66' to a point; N 31°23'34" E for a distance of 846.94' to a point; N 21°01'29" E for a distance of 894.45' to a point; N 16°56'23" E for a distance of 950.43' to a point in the right of way intersection of N. Main Street/Hwy 1751/U.S. Hwy 41 and Hickory Drive; thence, crossing Hwy 1751/U.S. Hwy 41 and with the south right of way line of Tom Reynolds Road, S 85°32'36" E for a distance of 1055.68' to the point of beginning, having an area of 1007.400 acres

I hereby certify that the Municipal Boundary described above is based on the following information: Survey's, Deeds, Previous Descriptions, Aerial Photographs, PVA tax Maps and other mapping provided by the City of Madisonville: The purpose of this Municipal Boundary Survey is to delineate these corporate limits of the City of Madisonville, Hopkins County, Kentucky. This plat does not in any way reflect individual parcel boundaries and should not be used for that purpose.

Thomas W. Crabtree
3-7-18

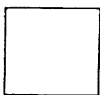




I, *[Signature]*
 Surveyor
 State of Missouri
 License No. 12345
 Date: 10/19/99
 This map was prepared by me or under my direct supervision and I am a duly licensed Surveyor in the State of Missouri.
 I certify that the information herein is true and correct to the best of my knowledge and belief.
 [Stamp: MISSOURI SURVEYORS ASSOCIATION]

S-1

CLARAFICATION FOR ANNEXATION
 1990-10-19
 CITY OF MADISONVILLE
 270-824-2100



RONALD JOHNSON & ASSOCIATES P.S.C.
 CONSULTING ENGINEERING • LAND SURVEYING
 2411 WEST CENTER STREET • SUITE 100 • MADISONVILLE, MISSOURI 64401
 Phone: 636-824-2100 FAX: 636-824-2111 www.rjpsurveying.com

NO.	DATE	REVISION

OVERSIZE MAP INCLUDED WITH
SUBMISSION.

To research the map, contact the
Office of Secretary of State
or the County Clerk.