

Law Offices

**JOHN M. MAYER, JR.**

501 EASTERN BOULEVARD

CLARKSVILLE, IN 47129

(812) 288-1235

(502) 584-5800

FAX: (812) 288-1240

LICENSED IN INDIANA,  
KENTUCKY & FLORIDA

JOHN M. MAYER  
(1913-1986)  
LOUIS G. MAYER  
(1918-1991)

January 26, 2011

Ms. Kandie Adkinson  
Office of the Secretary of State  
Land Office Division  
Capitol Annex, Suite T40  
702 Capital Avenue  
Frankfort, KY 40601

RE: City of Manor Creek, Kentucky  
KRS 81.045 filing

RECEIVED AND FILED  
DATE January 28, 2011  
\_\_\_\_\_  
ELAINE N. WALKER  
SECRETARY OF STATE  
COMMONWEALTH OF KENTUCKY  
BY Kandie Adkinson

Dear Ms. Adkinson:

Enclosed please find the adopted Resolution of the City of Manor Creek, Kentucky, and attachments. Thank you for the courtesy and consideration you gave me in our lengthy conversation of January 13, 2011. You have been extremely helpful in guiding the resolution of this matter.

If you need any further documentation, please advise.

Respectfully,



John M. Mayer, Jr.

JMM/mjm

Enclosures

ELAINE N. WALKER  
SECRETARY OF STATE  
COMMONWEALTH OF KENTUCKY  
BY Kandice Adkins

**RESOLUTION  
Of  
CITY OF MANOR CREEK, KENTUCKY**

**A RESOLUTION ADOPTING AN ACCURATE  
DESCRIPTION OF THE BOUNDARIES OF THE CITY  
OF MANOR CREEK, KENTUCKY**

**WHEREAS**, the City of Manor Creek, Kentucky, was established as a municipal corporation of the sixth class in the Jefferson Circuit Court, Kentucky, Cause No. 156416, on January 27, 1972, and further annexed the entire Sections of one and two as recorded in the Jefferson County Clerk's Office, Louisville, Kentucky, Plat and Subdivision Book 22, page 96 and Plat and Subdivision Book 25, page 29, as attached hereto.

**WHEREAS**, the City of Manor Creek, Kentucky, recognizes that a mistake was made in the KRS 81.045 filing with the Secretary of State's office, Frankfort, Kentucky, dated April 25, 1981, by K. G. Dennison, City Clerk for the City of Manor Creek, Kentucky, which inaccurately designated the boundaries of the City of Manor Creek, Kentucky, and

**WHEREAS**, the City of Manor Creek, Kentucky, desires to correct the inaccurate KRS 81.045 filing with the Secretary of State's office, Frankfort, Kentucky, as stated above, and

**WHEREAS**, the City of Manor Creek, Kentucky, wishes to comply with the requirements of KRS 81.045, and

**WHEREAS**, the City of Manor Creek, Kentucky, does not intend to amend, change, or replace the defined boundaries of the City of Manor Creek, Kentucky, as established in 1972.

**NOW THEREFORE, BE IT RESOLVED BY THE CITY OF MANOR CREEK,  
KENTUCKY:**

The City of Manor Creek, Kentucky, hereby adopts the delineation of boundaries established in the Jefferson County Clerk's Office Plat and Subdivision Book 22, page 96 and Book 25, page 29, as an accurate depiction of boundaries and the only boundaries that have been recognized by the City of Manor Creek, Kentucky, since the establishment of boundaries for the City of Manor Creek, Kentucky, in 1972. (See attached plats)

This Resolution shall be in full force and effect upon reading and adoption by the City of Manor Creek, Kentucky, Board of Commissioners.

DATE OF READING: January 25, 2011


MOTION BY: Jandra Callahan

SECONDED BY: Cynthia York

**Vote unanimous.**

ADOPTED this 25<sup>th</sup> day of January, 2011.

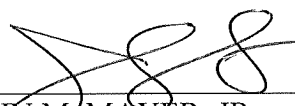
ATTEST:

  
\_\_\_\_\_  
JOHN M. MAYER, JR., City Clerk

**CERTIFICATION**

I, the undersigned, do hereby certify that I am the duly qualified and acting City Clerk of the City of Manor Creek, Kentucky, and as such City Clerk, I further certify that the foregoing is a true, correct, and complete copy of the Resolution duly adopted by the Board of Commissioners of said City at a duly convened meeting held on the 25<sup>th</sup> day of January, 2011, and now is in full force and effect, all as appears from the official records of said City in my possession and under my control.

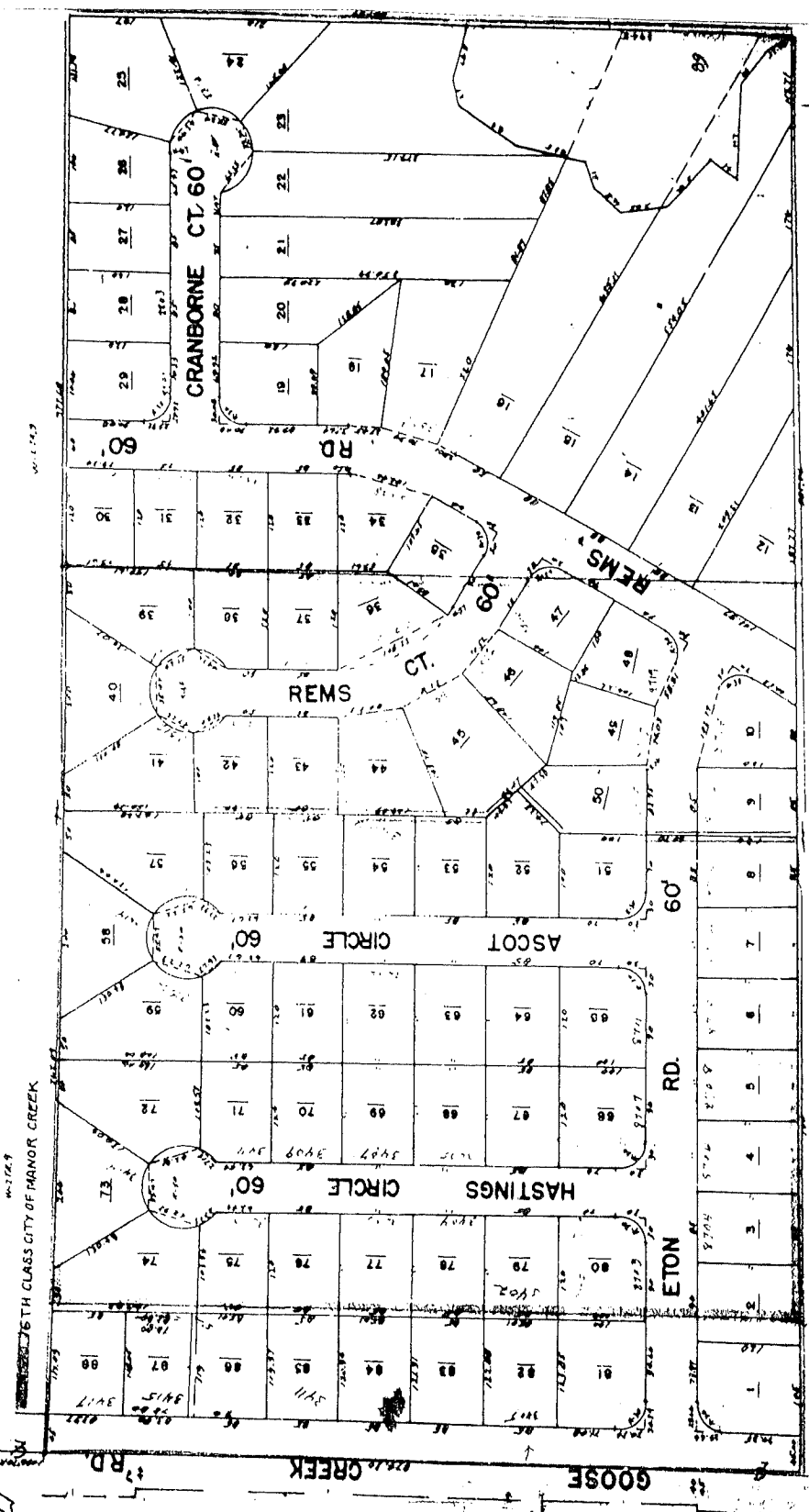
Witness my hand and the seal of said City as of the 25th day of January, 2011.

  
\_\_\_\_\_  
JOHN M. MAYER, JR.  
Clerk, City of Manor Creek, Kentucky

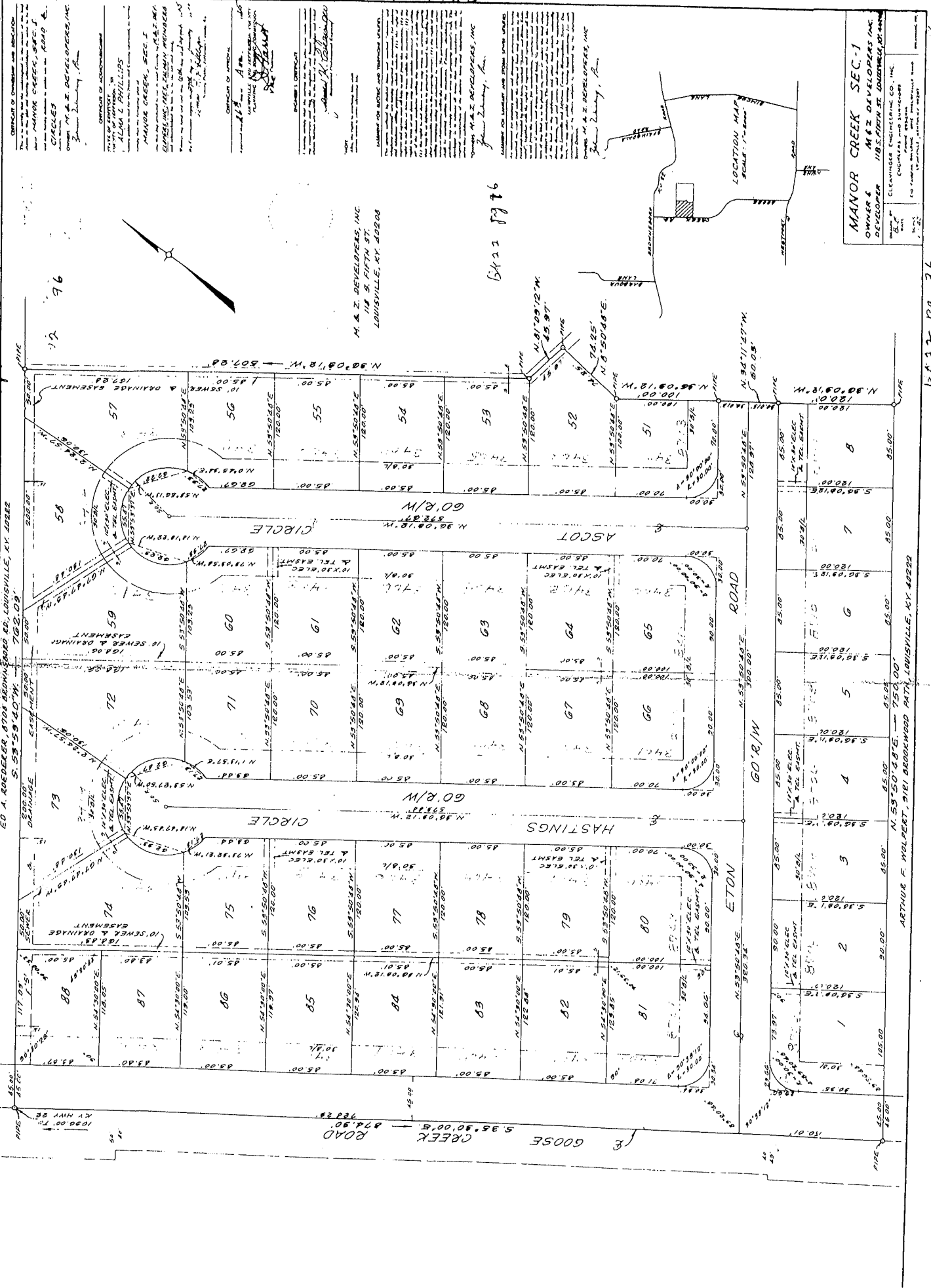
Block 15

JAMES WALLACE  
 Original Map No. 2 TR 8 PT.  
 Lawrence P. Lavin, County Tax Commissioner  
**MANOR CREEK SEC. 2.**  
 MAR 1965 (O.T. 8201)  
 FB. 25 P. 29  
**OWNER**  
 M. B. Z. DEV. INC.  
 D. B. 3965 R. 323 JUL 1965.

100 Foot Scale to One Inch  
**MANOR CREEK SEC. 1.**  
 FB. 22 P. 96 8-26-1965 (O.T. 8201)  
**OWNER**  
 M. B. Z. DEV. INC.  
 D. B. 3965 R. 323 JUL 1965.



76 6A - EXH



**MANOR CREEK SEC-1**  
 OWNERS: M & Z DEVELOPERS, INC.  
 DEVELOPER: M&Z DEVELOPERS, INC.  
 ENGINEERS AND ARCHITECTS: CLEVENGER ENGINEERING CO., INC.  
 1000 W. MARKET ST., SUITE 200, LOUISVILLE, KY 40202

M. & Z. DEVELOPERS, INC.  
 118 S. FIFTH ST.  
 LOUISVILLE, KY 40202

6x22 pg 76

6x22 pg 76

4015 S.R.

OVERSIZE MAP INCLUDED WITH  
SUBMISSION.

To research the map, contact the  
Office of Secretary of State  
or the County Clerk.