

RESOLUTION 2013-01

A RESOLUTION ADOPTING A MODERN AND ACCURATE LEGAL  
DESCRIPTION OF TERRITORY PREVIOUSLY ANNEXED BY  
ORDINANCE

WHEREAS, the City of Mt. Olivet enacted an ordinance now annexing property into the corporate limits of the City of Mt. Olivet; and

WHEREAS, the City wishes to provide a modern, accurate, easily identifiable legal description reflecting bearings and coordinates based upon the state plane coordinate system, including relevant GPS and GIS data, same having been certified by a professional land surveyor for the prior annexation; and

WHEREAS, the City wishes to comply with the requirements of Amended KRS 81A.470 effective July 13, 2004, and

WHEREAS, the City does not intend to amend or replace its prior ordinance annexing, but rather to interpret the defined boundaries of the territory previously annexed and adopt a modern and accurate legal description of territory previously annexed.

NOW THEREFORE, BE IT RESOLVED BY THE CITY COUNCIL OF THE CITY OF MT. OLIVET, KENTUCKY:

SECTION 1. That the City Council of the City of Mt. Olivet hereby adopts the following legal description, and a plat attached hereto as prepared by Travis McGlone, licensed Professional Land Surveyor No. 3919 by new survey as an accurate depiction of the property previously annexed into the corporate city limits of the City of Mt. Olivet by Ordinance 235 dated December 12, 2002, a copy of which is attached hereto as Exhibit 1, and hereby adopts said new legal description and plat as the official legal description and plat to be adopted by the City for all purposes when referencing this prior annexation.

SECTION 2. This new legal description as prepared by Travis McGlone a Licensed Professional Land Surveyor No. 3919 is as follows:

RECEIVED AND FILED  
DATE February 21, 2013

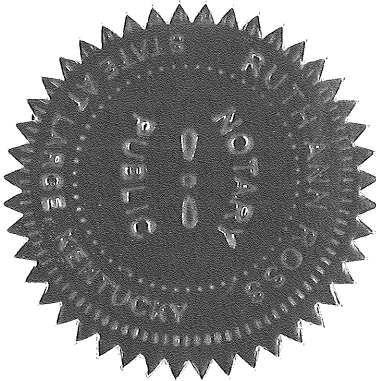
ALISON LUNDERGAN GRIMES  
SECRETARY OF STATE  
COMMONWEALTH OF KENTUCKY  
BY Handie Adkinson

CERTIFICATION

I, Ruth Ross, Clerk of the City of Mt. Olivet, do hereby certify that, the above Resolution 2013-01 is a true and correct copy as was presented to the City Council of the City of Mt. Olivet at their regular scheduled meeting dated January 7, 2013.

Given under my hand this 7<sup>th</sup> day of January 2013.

*Ruth Ross*  
\_\_\_\_\_  
City Clerk



DESCRIPTION OF  
ORDINANCE NO. 235  
For  
THE CITY OF MOUNT OLIVET  
By  
MISCELLANEOUS BOOK 2 PAGE 459

Situated in the Commonwealth of Kentucky, in the County of Robertson at the Northeast end of the original City Limits, near US HWY 62 and its intersection with Brierly Ridge Road and being more particularly described as follows:

Beginning at a point in the line of the Robertson County Board of Education DB 54 PG 473, Robertson County Board of Education DB 46 PG 738 2.7042 acre tract and in the original City Limits line of the City of Mount Olivet, as chartered by the Kentucky General Assembly in January 1871, said point located in the Kentucky North Zone Coordinate System, NAD 83 and having the following Coordinates: Northing – 376,985.14 and Easting – 1,702,881.03; Thence along the said original Limits of the City of Mount Olivet (1871 Charter) with a curve turning to the left (passing through the deeded parcels of the Robertson County Board of Education DB 46 PG 738 and DB 32 PG 476) in all with an arc length of 472.30' with a radius of 1980.00' with a chord bearing of N 43°28'41" W and distance of 471.18' to a point in the Robertson County Board of Education DB 32 PG 476 and Phillip Insko DB 46 PG 461; Thence leaving the original Limits of the City of Mount Olivet (1871 Charter) along the line of City Ordinance 235, Misc. 2 PG 459, Robertson County Board of Education, Insko and Carolyn Teegarden DB 62 PG 444 N 42°39'02" E a distance of 290.20'; Thence continuing along the line of the City Ordinance 235, Misc. 2 PG 459, Robertson County Board of Education and Thomas D. Gardner DB 52 PG 123 N 41°58'21" E a distance of 438.90'; Thence S 26°20'39" E a distance of 1.98'; Thence along the line of Anna Staggs DB 44 PG 623 and Terry Burden DB 47 PG 650 N 63°39'21" E a distance of 119.46'; Thence continuing along the line of Burden.

Page 2

Mount Olivet -17.305 acres

and Steve Rice DB 43 PG 33 N 88°48'21" E a distance of 85.80'; Thence N 87°20'21" E a distance of 135.30'; Thence N 23°05'39" W a distance of 18.48'; Thence along the line of Cathy Miller DB 59 PG 769 N 80°02'21" E a distance of 106.92'; Thence continuing along the line of Miller S 77°15'39" E a distance of 57.42'; Thence S 66°10'39" E a distance of 145.20'; Thence S 53°36'39" E a distance of 101.64'; Thence along the line of Cathy Miller DB 59 Pg 769 and the line of Donald & Cheryl Johnson DB 58 Pg 487 S 53°18'39" E a distance of 242.88'; Thence along the line of Tom Mitchell DB 47 Pg 349 S 45°43'21" W a distance of 143.22'; Thence continuing along the line of Mitchell S 41°18'21" W a distance of 222.42'; Thence along the line of Larry E. & Joyce C. Kelly DB 59 Pg 562 Tract 2 S 52°58'21" W a distance of 205.92'; Thence continuing along the line of Kelly Tract 2 S 59°29'21" W a distance of 188.10' to the Robertson County Board of Education DB 32 PG 476 and DB 46 PG 738, and corner Ordinance 235 Misc. 2 PG 459; Thence continuing along Ordinance 235 and the line of the Robertson County Board of Education DB 46 PG 738 S 43°35'18" W a distance of 274.22' to an iron pin & cap found (Endris 2405), corner to the Robertson County Board of Education DB 46 PG 738 and DB 54 PG 477; Thence continuing along City Ordinance 235 Misc. 2 PG 459 with the line of the Robertson County Board of Education DB 54 PG 477 N 65°06'04" W a distance of 115.81' to the corner of Robertson County Board of Education DB 54 Pg 477 & DB 54 PG 473; Thence continuing along City Ordinance 235 Misc. 2 PG 459 with the line of the Robertson County Board of Education DB 54 PG 473 N 70°15'24" W a distance of 135.22' to the corner of Robertson County Board of Education DB 54 Pg 473; Thence continuing along the line of Robertson County Board of Education DB 54 Pg 473 S 29°16'26" W a distance of 124.94' to the point of beginning containing 17.305 acres according to the survey by Travis A. McGlone PLS 3919 of Buffalo Trace Surveying, LLC 12/20/2012. Description was based on deed plots that were adjusted for closure for the purpose of Annexation to the City of Mount Olivet. This does not represent a boundary survey and is not intended for land transfer.

Page 3

Mount Olivet -17.305 acres

Purpose of description is to more accurately define the City of Mount Olivet Ordinance #235 as recorded in Miscellaneous Book 2 Page 459.

Record deed sources used were as follows: Robertson County Board of Education DB 32 PG 476, DB 46 PG 738, DB 54 PG 473 and DB 54 PG 477. Also, City Ordinance 235 Misc. Bk. 2 PG 459. All sources were found of record in the Robertson County Clerks Office. Adjoining deed references were according to the Robertson County PVA records and were not field verified

Being the same land described in ordinance # 235, adopted 2 December 2002 and Recorded in the Robertson County Clerks Office in Misc. Bk. 2 Page 459.

  
Travis A. McGlone PLS 3919                      Date



WHEREAS, the Mt Olivet City Council has adopted this Resolution on this 7th day of January 2013.

Phyllis Burns  
Phyllis Burns

Toni K. Curry  
Toni K. Curry

Douglas E. Wright  
Douglas E. Wright

Sammi Richmond  
Sammi Richmond

Cassandra Callen  
Cassandra Callen

ATTEST:

Beth Ross  
City Clerk

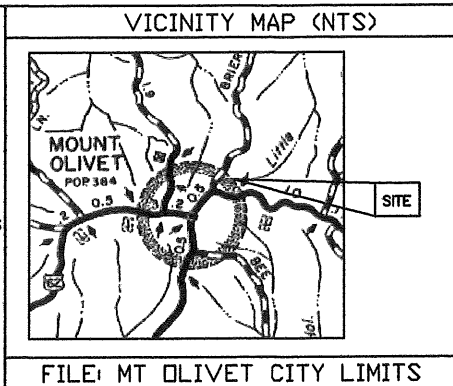
STATE OF KENTUCKY, COUNTY ROBERTSON, SCT  
I, Stephanie A. Bogucki, Clerk of Robertson County Court, hereby certify that  
the foregoing Ordinance, From City of Mt Olivet  
to \_\_\_\_\_ was on this day \_\_\_\_\_  
office and tax in the amount of \_\_\_\_\_  
For record, whereupon the same together with this and the foregoing certificate  
have been duly recorded this 8<sup>th</sup> day of January 2013

STEPHANIE A. BOGUCKI

Time 1:10pm By Melina Bousede D.C.

Ord BOOK# <u>1</u>
PAGE# <u>131</u>
DATE <u>1-8-13</u>
TIME <u>1:10pm</u>
<u>Melina Bousede</u> ATTESTED BY

- LEGEND**
- 1/2" X 18" IRON PIN & CAP SET (ORANGE PLASTIC CAP STAMPED "T. MCGLONE PLS 3919")
  - ▲ IRON PIN & CAP FOUND (ENDRIS - PLS 2405)
  - 1/2" IRON PIN & CAP FOUND (WTC - PLS 2380)
  - PROPERTY CORNER BY DEED PLOTS (NO MONUMENT SET)
  - ⊙ TREE (AS NOTED ON PLAT)
  - EXISTING CITY LIMITS
  - BOUNDARY LINE
  - - - ORIGINAL CITY LIMITS (1871)
  - · - · - CENTERLINE OF ROAD



**BUFFALO TRACE SURVEYING, LLC**

TRAVIS MCGLONE, PLS  
1386 LOGAN RUN ROAD  
FLEMINGSBURG, KY 41041  
PHONE: 606-845-2812  
EMAIL: lbsurveying@gmail.com

**PLAT SHOWING ANNEXATION ORDINANCE #235 (PORTION OF ROBERTSON COUNTY BOARD OF EDUCATION PROPERTY)**

U.S. HWY 62, MT. OLIVET, ROBERTSON COUNTY, KENTUCKY  
DATE 12/20/2012 SCALE 1"=200'

CLIENT: CITY OF MT. OLIVET  
ADDRESS: P.O. BOX MT. OLIVET, KY 41064

FIELD SURVEY DATE: 12/13/2012

**SURVEYORS CERTIFICATE**

I HEREBY CERTIFY THAT THE SURVEY SHOWN ON THIS PLAT WAS PERFORMED BY PERSONS UNDER MY DIRECT SUPERVISION. DEED PLOTS WERE USED TO ESTABLISH THE ANNEXED BOUNDARY AND WERE ADJUSTED FOR CLOSURE. THIS PLAT DOES NOT REPRESENT A BOUNDARY SURVEY AND IS NOT INTENDED FOR LAND TRANSFER.

*Travis A. McGlone* 12/20/12  
TRAVIS A. MCGLONE PLS 3919 DATE

THIS PLAT DOES NOT REPRESENT A BOUNDARY SURVEY AND IS NOT INTENDED FOR LAND TRANSFER.

**NOTE:**

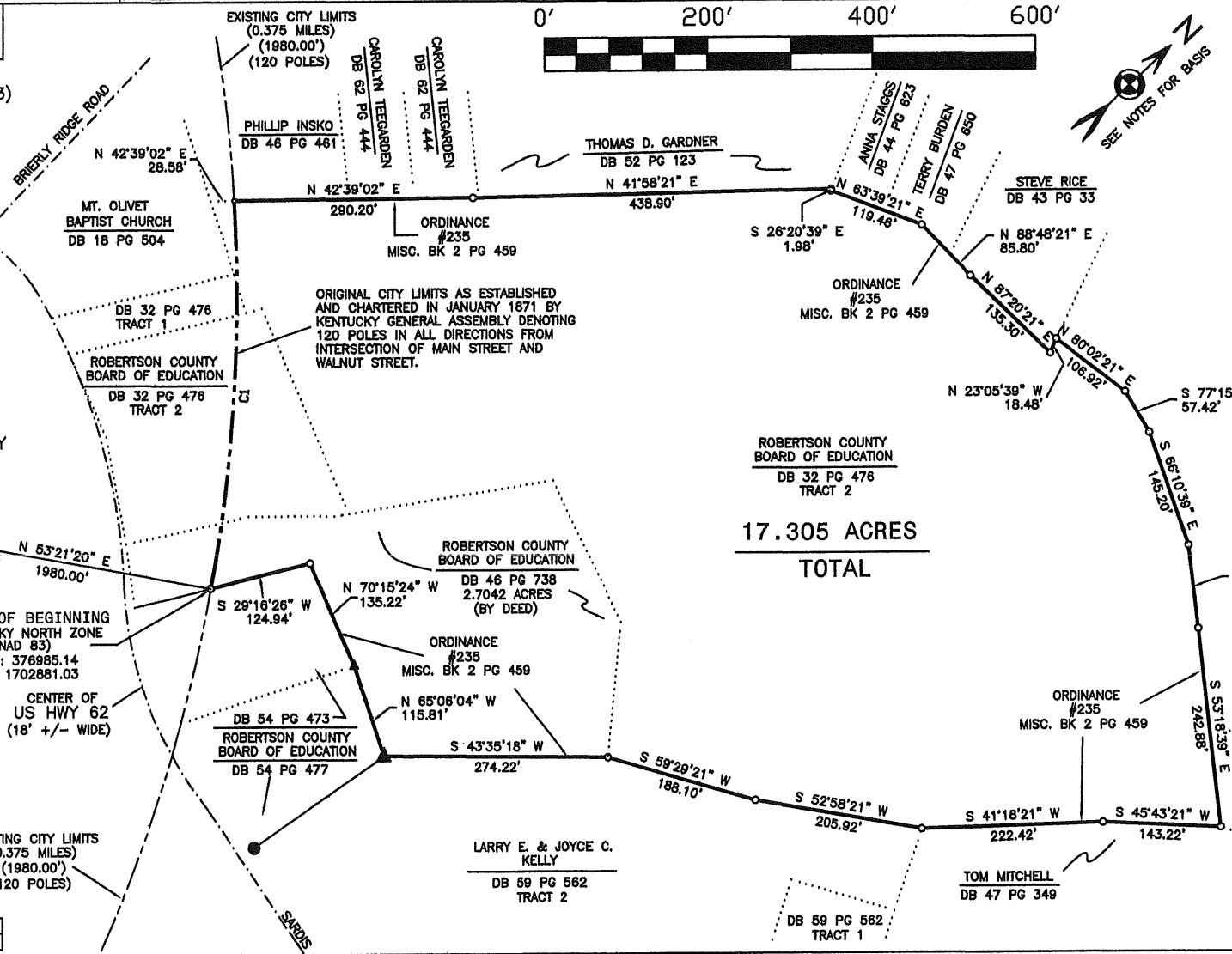
BEARINGS COORDINATED TO THE KENTUCKY NORTH ZONE (NAD 83) COORDINATE SYSTEM BY THE METHOD OF RTK GPS USING A CARLSON DUAL FREQUENCY RECEIVER, CARLSON SURVEYOR+GPS AND A CARLSON FLEX G2 BASE STATION.

THIS PLAT IS NOT A BOUNDARY SURVEY, ONLY A PLOT OF DEEDS INTENDED TO BE USED FOR THE ANNEXATION FOR THE CITY OF MT. OLIVET. DEED PLOTS WERE ADJUSTED FOR CLOSURE AND PLACED IN THE KENTUCKY NORTH ZONE GRID BY TWO FOUND MONUMENTS WITH A TRAVERSE CLOSURE EXCEEDING 1:10,000 AS REQUIRED BY KENTUCKY MINIMUM STANDARDS IN A URBAN SURVEY.

PURPOSE OF PLAT IS TO MORE ACCURATELY DEFINE THE EXISTING CITY OF MOUNT OLIVET ORDINANCE #235 AS RECORDED IN MISC. BK 2 PAGE 459.

ADJOINERS SHOWN ACCORDING TO INFORMATION COLLECTED AT THE ROBERTSON COUNTY PVA AND WERE NOT FIELD VERIFIED.

ALL DEED INFORMATION WAS COLLECTED FROM THE ROBERTSON COUNTY CLERKS OFFICE. THE ORIGINAL CHARTER OF MOUNT OLIVET WAS FOUND ON PUBLIC RECORD AT THE ROBERTSON COUNTY PUBLIC LIBRARY.



STATE OF KENTUCKY

TRAVIS A. MCGLONE  
3919

LICENSED PROFESSIONAL LAND SURVEYOR

CURVE RADIUS	ARC LENGTH	CHORD LENGTH	CHORD BEARING	DELTA ANGLE
C1 1980.00'	472.30'	471.18'	N 43°28'41" W	13°40'01"

**RECORD SOURCE**

DB 32 PG 476  
DB 46 PG 738  
MISC. 2 PG 459