



# City of Nicholasville

P. O. Box 450  
601 North Main Street  
Nicholasville, Kentucky 40340-0450  
(606)885-9473 Fax (606)885-9476

**Mayor**  
Sam E. Corman

**Commissioners**  
Johnny M. Collier  
F. Diann Cundiff  
William J. Daugherty  
Harlan H. Veal, Sr.

**City Clerk**  
Roberta L. Warren

**Directors**  
Thomas P. Calkins - Utility  
James R. Hood - Finance  
Jerry W. Lovitt - General Government

September 20, 1999

Secretary of State  
Frankfort, KY 40601

To Whom It May Concern:

RECEIVED  
SEP 21 1999  
SECRETARY OF STATE  
COMMONWEALTH OF KY  
*Maps not filed*

As of August 1, 1999 I was appointed City Clerk in Nicholasville. Bonnie Dean previously held this office for the last thirty plus years. In looking for some information, I ran across a folder that included a copy of KRS 81A.470 and a list of agencies that copies of annexation ordinances are to be sent.

I am sending the enclosed copies of ordinances, which you may or may not have.

Sincerely,

Roberta Warren  
City Clerk

Enclosure: Ordinance 229-97  
Ordinance 240-98  
Ordinance 257.1-98  
Ordinance 268-98  
Ordinance 283-98  
Ordinance 291-99  
Ordinance 306-99  
Ordinance 307-99 ✓ *Dep. Filing*

ORDINANCE 229-97\_

AN ORDINANCE ESTABLISHING A DECREE OF ANNEXATION OF THE HEREINAFTER DESCRIBED PARCEL OF LAND INTO THE CITY OF NICHOLASVILLE, KENTUCKY

WHEREAS, on January 11, 1994, the City of Nicholasville by and through its Board of Commissioners passed an Ordinance of Intent to annex all of the property known and described herein as Exhibit "A";

WHEREAS, no protest or petition has been filed with the Mayor of the City of Nicholasville within the sixty (60) days after the date of the enactment of the Ordinance of Intent;

WHEREAS, the City of Nicholasville is still desirous of extending its corporate city limits by annexing the property known and described herein as Exhibit "A";

NOW THEREFORE BE AND IT IS HEREBY ORDAINED that the property described herein as Exhibit "A" is annexed into the City Limits of the City of Nicholasville, Jessamine County, Kentucky.

FIRST READING

DATED: August 14, 1997

Sam E. Cornman  
MAYOR

ATTEST: Bonnie Dean

CITY CLERK

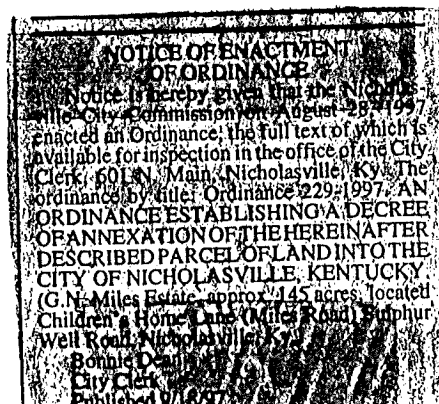
SECOND READING

DATED: August 28, 1997

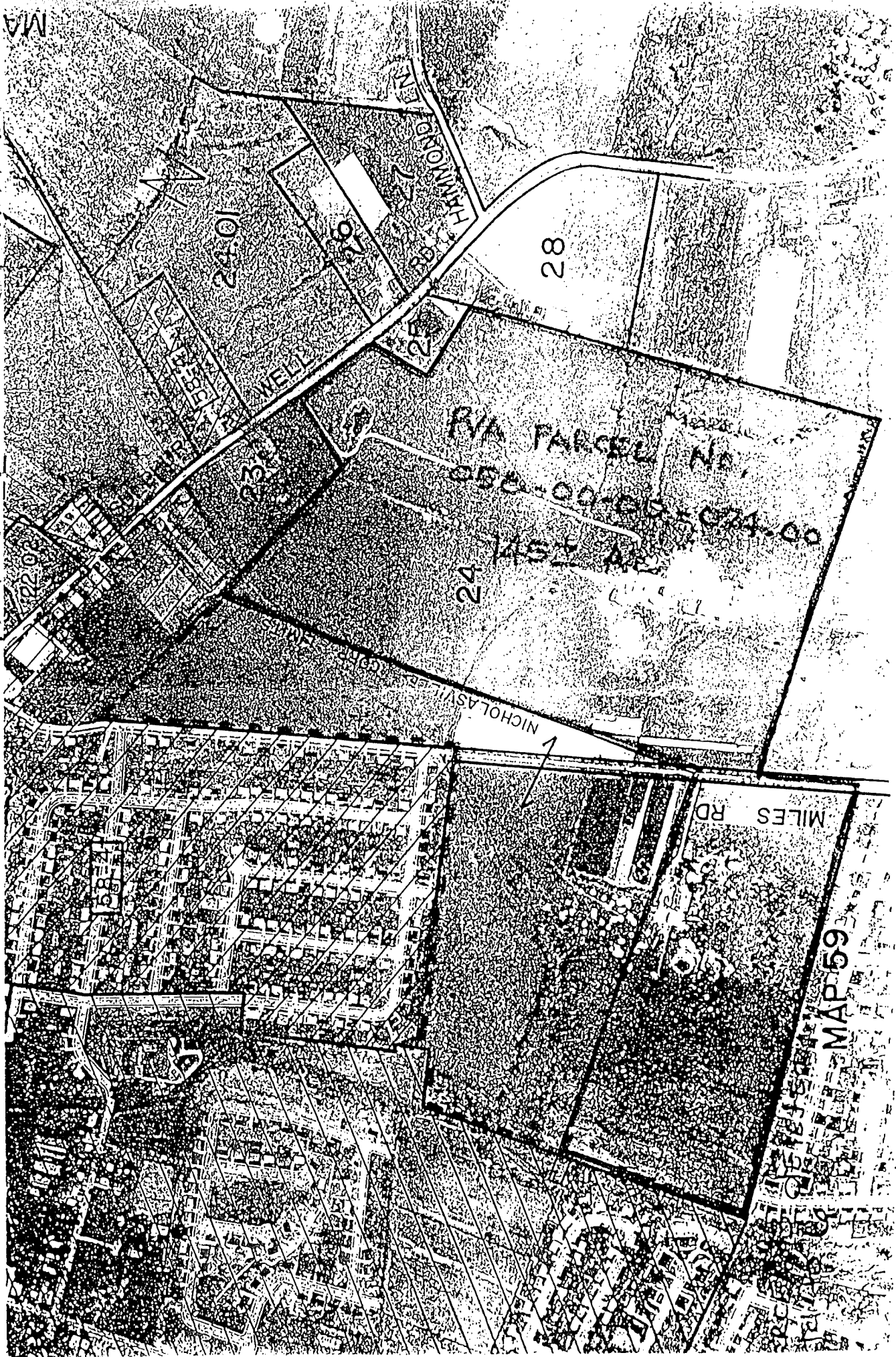
Sam E. Cornman  
MAYOR

ATTEST: Bonnie Dean

CITY CLERK



PROPOSED ANNEXATION - MILES PROPERTY EXHIBIT B



PROPOSED ANNEXATION  
MILES PROPERTY  
SULFUR WELL & MILES ROAD  
1993

A parcel or tract of land situated southeasterly of and contiguous to the present (1993) Corporate limits of City of Nicholasville, consisting of approximately 145 acres and being a portion of Miles Hirs property as shown on PVA map number 58 and designated as parcel number 058-00-00-024.00 and as shown on attached Exhibit A and being more particularly described as follows,  
TO WIT:

Beginning at a point said point being the northeasterly corner of Edgewood East Subdivision on the line of City-County Park (Jeramie Focal Court) and being on the present (1993) Corporate limits of City of Nicholasville, thence with said Corporate limits being the common boundary of Miles and Edgewood East to a point being common corner of Miles and Shannon Park and Edgewood

East Subdivisions, thence continuing with present (1993) Corporate limits being the Common boundary of Miler and Shannon Park Subdivision to a point on the easterly boundary of Twin Acre Subdivision, thence continuing with the present (1993) Corporate limits in a generally eastwardly line thru the lands of Miler to a point and point being a southeasterly corner of present (1993) Corporate limits of City of Nictolaville, thence continuing with present Corporate limits in a generally northeasterly direction thru the lands of Miler to a point on the southerly boundary of Lowery, thence continuing with the southerly boundary of Miler and Lowery and continuing with the southerly and easterly boundary of Miler and Warner to the ~~entrance~~ Sulfur Well Road, thence continuing with the Sulfur Well Road to a point being the Common Corner of Miler and Carey, thence continuing with the westerly and southerly boundary of Carey to a point being the Common Corner of Miler, Carey and Goodlett being in the westerly line.

of Dr. Coleman Subdivision, thence  
continuing with the westerly boundary  
of Coleman to the common corner  
of Miles and Yessamine Fiscal Court,  
thence with the common boundary  
of Miles and northerly and westerly  
boundary of Yessamine Fiscal Court  
to the point of beginning.

Being a portion of the same  
property conveyed to G. N. Miles and  
upon his death was devised to  
Rosa Miles for life with remainder  
in fee simple to Mary Jane Cassidy  
(same person as Mary Jane Cassidy),  
A. C. Miles and Susie Welch Miles  
(now Waters) by will of G. N. Miles  
recorded in Will Book N, page 278  
in the Office of the Yessamine County Clerk.