



City of Owensboro
Kentucky
TEL. (502) 685-8200

P. O. BOX 847
OWENSBORO, KENTUCKY 42302

July 19, 1989

RECEIVED

JUL 24 1989

SECRETARY OF STATE
COMMONWEALTH OF KY

Hon. Bremer Ehrler
Office of Secretary of State
Commonwealth of Kentucky
Frankfort, KY 40601

Attention: Marvin Thornton
Land Office

Gentlemen:

Re: Final annexation of
1841 Hacienda Lane; and
3196 Parrish Avenue (and a
portion of KY Hwy. 81 R/W)

Enclosed herewith are the papers evidencing final annexation of the above-referenced property into the City of Owensboro, Kentucky, for recording in the office of the Secretary of State.

Your attention to this matter is appreciated.

Sincerely,

Carol Blake
City Clerk

Enclosures

ORDINANCE NO. 30-89

AN ORDINANCE ANNEXING TO THE CITY OF OWENSBORO, KENTUCKY, CERTAIN UNINCORPORATED TERRITORY IN THE COUNTY OF DAVIESS ADJOINING THE PRESENT BOUNDARY LINE OF THE CITY, BEING PROPERTY LOCATED AT 3196 PARRISH AVENUE, CONTAINING 1.310 ACRES, MORE OR LESS.

WHEREAS, by Ordinance No. 26-89, heretofore passed by the Board of Commissioners of the City of Owensboro, Kentucky, on June 6, 1989, the City proposed to annex certain territory hereinafter more particularly described, and

WHEREAS, said ordinance has been published in the official newspaper for the city and the sixty (60) day waiting period has been waived in accordance with KRS 81A.412 by virtue of said owners application for annexation.

NOW, THEREFORE, BE IT ORDAINED BY THE CITY OF OWENSBORO, KENTUCKY, AS FOLLOWS:

SECTION 1. There is hereby annexed to the City of Owensboro, Kentucky, and its boundary line is hereby extended so as to include within the limits of the City of Owensboro that certain territory in the County of Daviess, State of Kentucky, adjoining and being adjacent to the present boundary line of the City of Owensboro, Kentucky, more particularly described as follows:

BEGINNING at a point in the south margin of KY 81 (Parrish Avenue), said point also being in the west margin of Parrish Plaza Drive and being in the present city limit; thence with the south margin of Parrish Avenue S 75 degrees 31 minutes W 140.84 feet to a point being the N.E. corner of 3196 Parrish Avenue; thence S 13 degrees 05 minutes E 181.50 feet to a point; thence S 76 degrees 55 minutes W 64.98 feet to a point; thence N 13 degrees 05 minutes W 181.50 feet to a point being the N.W. corner to 3196 Parrish Avenue, and being in the south margin of Parrish Avenue; thence N 13 degrees 05 minutes W and crossing Parrish Avenue approximately 220 feet to a point in the north margin of Parrish Avenue; thence with the north margin of Parrish Avenue eastwardly approximately 205.8 feet to a point; thence southward with the present city limit and crossing Parrish Avenue approximately 220 feet to the point of beginning and containing 1.310 acres, more or less.

SECTION 2. Any dedicated streets, alleys, or easements constituting any portion of the property to be annexed are hereby accepted by the City of Owensboro pursuant to KRS 82.400(2).

INTRODUCED AND PUBLICLY READ ON FIRST READING, this the
5th day of July, 1989.

PUBLICLY READ AND FINALLY APPROVED ON SECOND READING, this
the 18th day of July, 1989.

/s/ David C. Adkisson
Mayor

ATTEST:

/s/ Carol Blake
City Clerk

CERTIFICATION

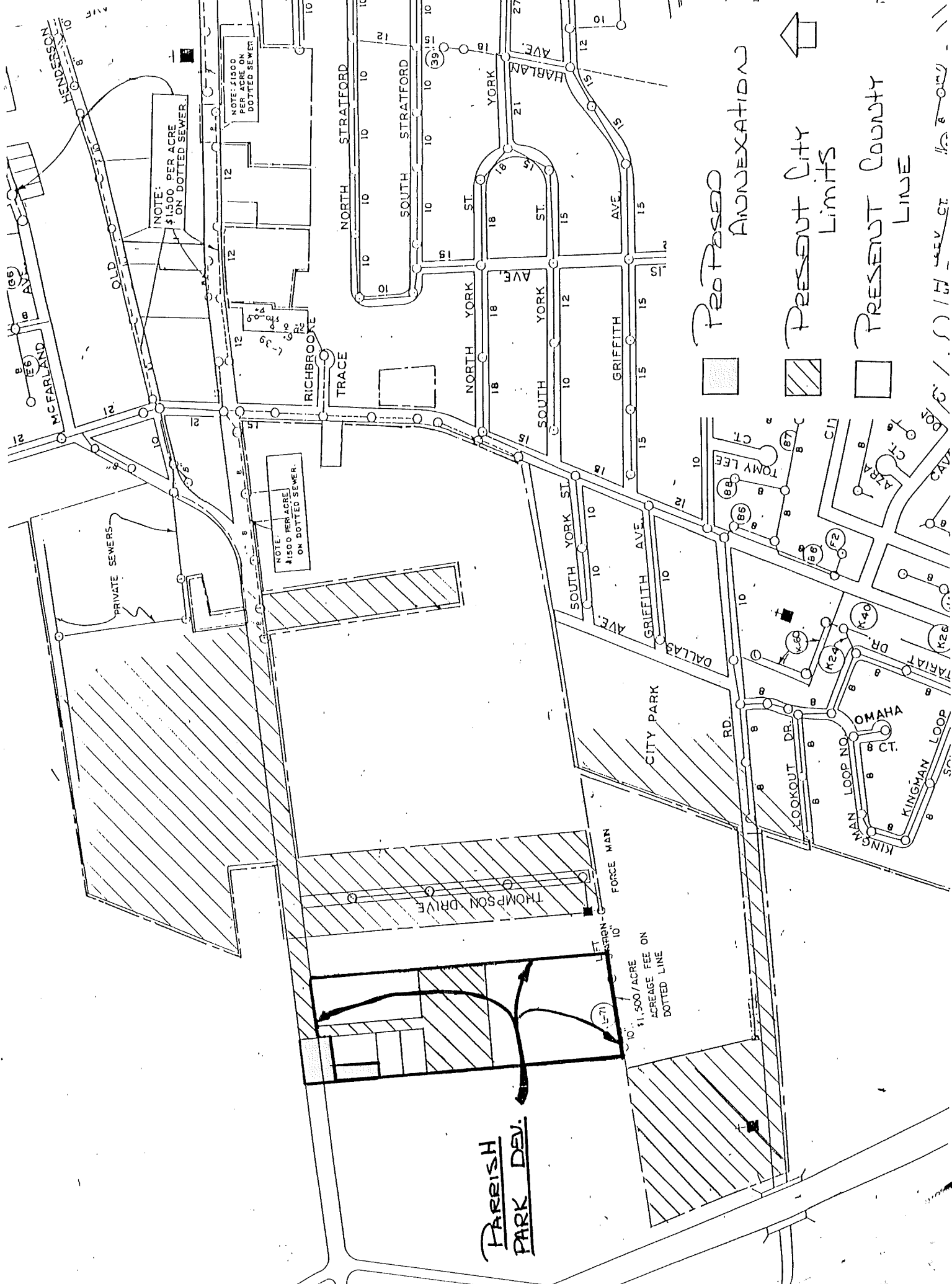
I, Carol Blake, City Clerk of the City of Owensboro, Kentucky, do hereby certify that the foregoing is a true and correct copy of Ordinance No. 30-89, duly adopted by the Board of Commissioners of the City of Owensboro, Kentucky, on July 18, 1989, the original of which is on file in the office of the City Clerk.

This the 19th day of July, 1989.

Carol Blake
Carol Blake, City Clerk

ANNEXATION REQUESTED BY:

Gary Slaven
3196 Parrish Avenue
Owensboro, KY 42301
502-686-8588



PROPOSED ANNEXATION

PRESENT City Limits

PRESENT County LINE

PARISH PARK DEV.

\$1,500/ACRE
ACREAGE FEE ON
DOTTED LINE

NOTE: \$1500
PER ACRE ON
DOTTED SEWER

NOTE: \$1500
PER ACRE ON
DOTTED SEWER

NOTE: \$1500
PER ACRE
ON DOTTED SEWER.

PRIVATE SEWERS

RICHBROOKE
TRACE

THOMPSON DRIVE

FORCE MAIN

RD.

OMAHA

KINGMAN LOOP

