



City of Owensboro
Kentucky

TEL. (502) 687-8500

P. O. BOX 847
OWENSBORO, KENTUCKY 42302

June 8, 1994

RECEIVED

JUN 13 1994

**SECRETARY OF STATE
COMMONWEALTH OF KY**

Hon. Bob Babbage
Office of Secretary of State
Commonwealth of Kentucky
Frankfort, KY 40601

Attention: Kandie Adkinson
Land Office

Gentlemen:

Re: Final annexation of:

Unit #2 of Bon Harbor
Estates Sub. - 6.72 acres

615 Salem Drive - 1.694
acres, and

A portion of the 2500 block
of Fairview Spur and a
portion of R/W on Fairview
Drive and Fairview Spur -
21.97 acres

Enclosed herewith are the papers evidencing final
annexation of the above-referenced properties into the City of
Owensboro, Kentucky, for recording in the office of the Secretary
of State.

Thank you for your continued assistance and
cooperation.

Sincerely,

Carol Blake
City Clerk

Enclosures

ORDINANCE NO. 19-94

AN ORDINANCE ANNEXING TO THE CITY OF OWENSBORO, KENTUCKY, CERTAIN UNINCORPORATED TERRITORY IN THE COUNTY OF DAVIESS ADJOINING THE PRESENT BOUNDARY LINE OF THE CITY, BEING UNIT #2 OF BON HARBOR ESTATES SUBDIVISION, CONTAINING 6.72 ACRES, MORE OR LESS.

WHEREAS, by Ordinance No. 15-94, heretofore passed by the Board of Commissioners of the City of Owensboro, Kentucky, on May 3, 1994, the City proposed to annex certain territory hereinafter more particularly described, and

WHEREAS, said ordinance has been published in the official newspaper for the city and the sixty (60) day waiting period has been waived in accordance with KRS 81A.412 by virtue of said owners application for annexation.

NOW, THEREFORE, BE IT ORDAINED BY THE CITY OF OWENSBORO, KENTUCKY, AS FOLLOWS:

SECTION 1. There is hereby annexed to the City of Owensboro, Kentucky, and its boundary line is hereby extended so as to include within the limits of the City of Owensboro that certain territory in the County of Daviess, State of Kentucky, adjoining and being adjacent to the present boundary line of the City of Owensboro, Kentucky, more particularly described as follows:

BEGINNING at a point in the West margin of Bon Harbor Hills and the Northeast corner of Lot #78; Unit #1; Bon Harbor Estates; said point also being in the present City limit line; thence with the present City limit line S 84 degrees 55 minutes 52 seconds W 93.95 feet; thence N 71 degrees 49 minutes 22 seconds E 219.00 feet; thence S 18 degrees 10 minutes 38 seconds W 287.00 feet; thence leaving the present City limit line N 71 degrees 49 minutes 22 seconds W 375.00 feet; thence N 18 degrees 10 minutes 38 seconds E 287.00 feet; thence S 71 degrees 49 minutes 22 seconds E 109.00 feet; thence N 18 degrees 10 minutes 38 seconds E 118.00 feet; thence N 13 degrees 39 minutes 59 seconds E 50.15 feet; thence N 18 degrees 10 minutes 38 seconds E 118.00 feet; thence S 71 degrees 49 minutes 22 seconds E 533.39 feet; thence S 71 degrees 46 minutes 48 seconds E 126.88 feet; thence S 08 degrees 07 minutes 33 seconds E 160.42 feet to a point being in the present City limit line; thence with the present City limit line S 81 degrees 52 minutes 27

seconds W 125.18 feet; thence S 84 degrees 55 minutes 59 seconds W 60.00 feet; thence S 05 degrees 04 minutes 52 seconds E 27.90 feet to the point of beginning and containing 6.72 acres, more or less.

SECTION 2. Any dedicated streets, alleys, or easements constituting any portion of the property to be annexed are hereby accepted by the City of Owensboro pursuant to KRS 82.400.

INTRODUCED AND PUBLICLY READ ON FIRST READING, this the 17th day of May, 1994.

PUBLICLY READ AND FINALLY APPROVED ON SECOND READING, this the 7th day of June, 1994.

/s/ David C. Adkisson
Mayor

ATTEST:

/s/ Carol Blake
City Clerk

C E R T I F I C A T I O N

I, Carol Blake, City Clerk of the City of Owensboro, Kentucky, do hereby certify that the foregoing is a true and correct copy of Ordinance No. 19-94, duly adopted by the Board of Commissioners of the City of Owensboro, Kentucky, on June 7, 1994, the original of which is on file in the office of the City Clerk.

This the 8th day of June, 1994.

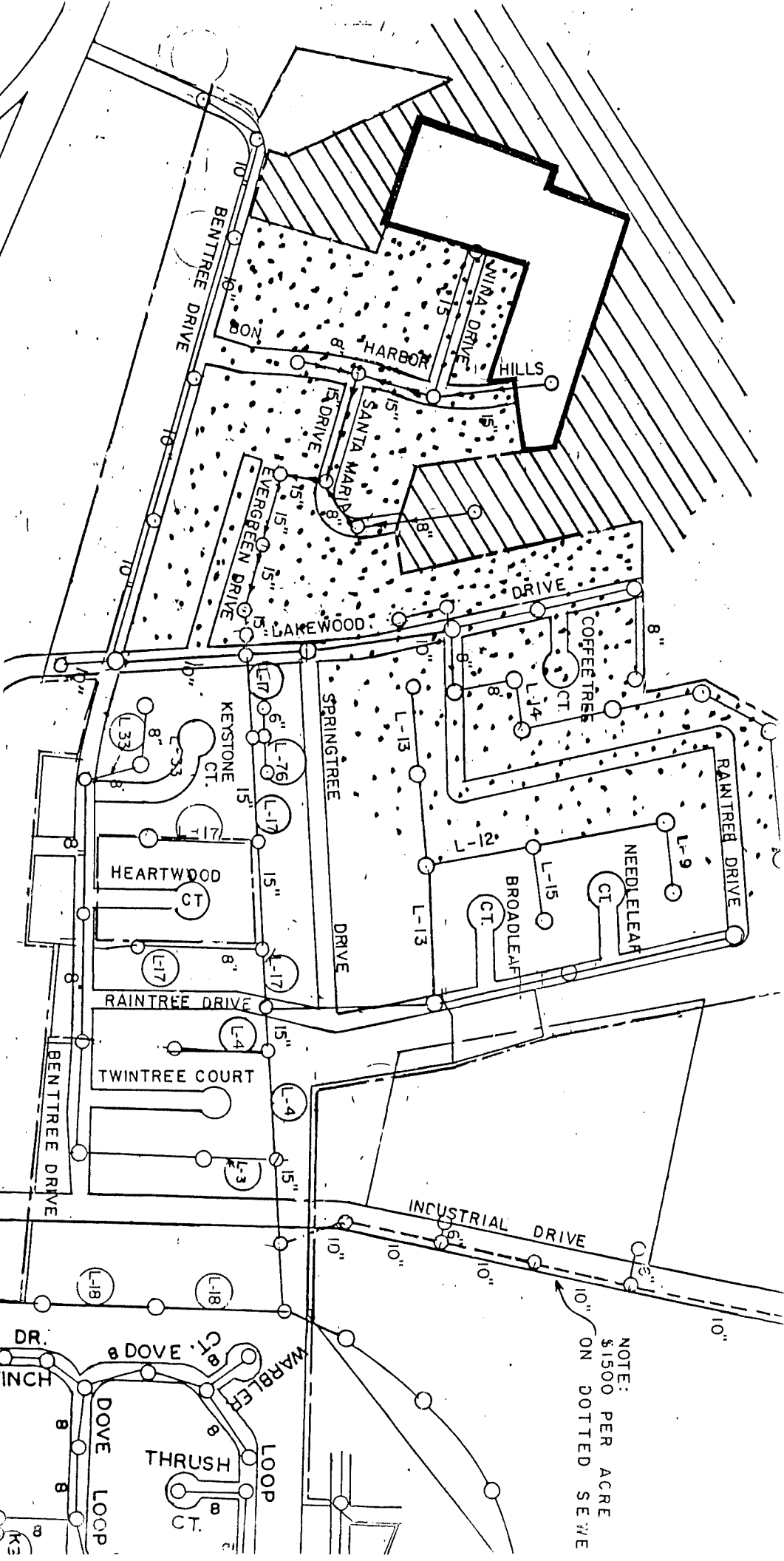

City Clerk

ANNEXATION REQUESTED BY:

Robert H. Steele
1115 Tamarack Road
Owensboro, Kentucky 42301

(502) 684-8771

- ☐ Proposed Annexation
- ☒ Present City Limits
- ☒ Present County Line



NOTE:
\$1500 PER ACRE
ON DOTTED SEWE