





COMMONWEALTH OF KENTUCKY  
TRANSPORTATION CABINET  
transportation.ky.gov

Andy Beshear  
GOVERNOR

Jim Gray  
SECRETARY

August 10, 2021

The Honorable Scott Madon  
Mayor, City of Pineville  
P.O. Box 688  
Pineville, KY 40977

Dear Mayor Madon,

The Kentucky Transportation Cabinet generally does not oppose or concur with annexation issues but prefers to remain neutral with the understanding that KYTC still controls our Right of Way. Therefore, KYTC does not have any opposition to your annexation efforts in Bell County including KYTC Right of Way.

Do not hesitate to contact us in the future if you believe we may be able to further assist you with a roadway issue (502) 564-7183.

Sincerely,

A handwritten signature in black ink that reads "Mikael Pelfrey".

Mikael Pelfrey, P.E.  
Director  
Division of Planning

MP/RW/BC

cc: Chris Jones, P.E.  
John M. Gambrel, Attorney, City of Pineville

**ORDINANCE NO. 2021-06**

**ORDINANCE TO ANNEX UNINCORPORATED TERRITORY  
CONTAINING APPROXIMATELY 102.94 ACRES  
FROM PAGE ELEMENTARY SCHOOL TO STATE HIGHWAY 987  
AT THE JUNCTION OF US ROUTE 119  
ALL SUCH TERRITORY BEING CONTINGUOUS TO EXISTING CITY LIMITS**

WHEREAS, the Commonwealth of Kentucky, by and through the Department of Transportation, has consented to the annexation of the real property from Page Elementary School to State Highway 987 at the Junction of US Route 119.

WHEREAS, the City of Pineville deems the annexation of this certain real property to be desirable and in the best interest of the City of Pineville; and

WHEREAS, it is necessary from time to time to extend the boundaries of the City for the benefit of the City by providing an opportunity for growth and development of the City; and

WHEREAS, the real property to be annexed is adjacent to and contiguous with the City's boundaries at this time; and

WHEREAS, no part of the real property to be annexed is included within the boundary of another incorporated city; and

WHEREAS, that at this time this is the only area that the City is annexing;

WHEREAS, all requirements of KRS 81A.410 have been met and the real property owner of record has consented to the annexation in writing fulfilling the requirements of KRS 81A.412, which consent is attached hereto and made a part here of as if fully set forth herein as Exhibit "A", and consequently in order to properly and legally annex the subject real property under the law of the Commonwealth, the City must only enact this Ordinance, and

NOW THEREFORE, BE IT ORDAINED, that the City of Pineville hereby enacts by ordinance and adopts and establishes that the real property, which is more particularly described in Exhibit "B" is attached hereto and made a part hereof as if fully set forth herein, is hereby annexed and made a part of the City of Pineville, Kentucky.

ADOPTED this the 20<sup>th</sup> day September, 2021.

EXECUTED:   
SCOTT MADON, MAYOR

First Reading: Ben Madon  
8/9/2021

EXECUTED:   
SAMANTHA BISHOP, CLERK

Second Reading: Tuck Woolum  
9/20/2021

**EXHIBIT B**

City of Pineville Annexation

Page School to KY 987

Beginning at a point on the east US 119 Right of Way in front of the Page Elementary School with the coordinates of North 3431737.32, East 5539067.64;

Thence following said US 119 Right of Way South 5 Degrees 50 Minutes 00 Seconds West a distance of 654.40 feet

Thence South 84 Degrees 10 Minutes 00 Seconds East a distance of 20.00 feet

Thence South 5 Degrees 50 Minutes 00 Seconds West a distance of 350.00 feet;

Thence North 84 Degrees 10 Minutes 00 Seconds West a distance of 20.00 feet;

Thence South 5 Degrees 50 Minutes 00 Seconds West a distance of 250.00 feet;

Thence South 84 Degrees 10 Minutes 00 Seconds East a distance of 10.00 feet;

Thence South 5 Degrees 50 Minutes 00 Seconds West a distance of 111.50 feet;

Thence along an arc 229.32 feet to the left, having a radius of 1509.70 feet, the chord of which is South 1 Degree 28 Minutes 54 Seconds West for a distance of 229.10 feet;

Thence South 87 Degrees 07 Minutes 49 Seconds West a distance of 10.00 feet;

Thence along an arc 1065.02 feet to the left, having a radius of 1519.70 feet, the chord of which is South 22 Degrees 56 Minutes 48 Seconds East for a distance of 1043.36 feet;

Thence North 46 Degrees 58 Minutes 36 Seconds East a distance of 30.00 feet;

Thence along an arc 284.71 feet to the left, having a radius of 1489.70 feet, the chord of which is South 48 Degrees 29 Minutes 55 Seconds East for a distance of 284.28 feet;

Thence South 36 Degrees 01 Minutes 35 Seconds West a distance of 30.00 feet;

Thence along an arc 422.11 feet to the left, having a radius of 1519.70 feet, the chord of which is South 61 Degrees 55 Minutes 51 Seconds East for a distance of 420.76 feet;

Thence South 20 Degrees 06 Minutes 43 Seconds West a distance of 15.00 feet;

Thence along an arc 313.84 feet to the left, having a radius of 1534.70 feet, the chord of which is South 75 Degrees 44 Minutes 48 Seconds East for a distance of 313.30 feet;

Thence North 8 Degrees 23 Minutes 42 Seconds East a distance of 15.00 feet;

Thence along an arc 370.32 feet to the left, having a radius of 1519.70 feet, the chord of which is South 88 Degrees 35 Minutes 09 Seconds East for a distance of 369.40 feet;

Thence North 84 Degrees 26 Minutes 00 Seconds East a distance of 360.50 feet;

Thence North 5 Degrees 34 Minutes 00 Seconds West a distance of 20.00 feet;

Thence North 84 Degrees 26 Minutes 00 Seconds East a distance of 150.00 feet;

Thence South 5 Degrees 34 Minutes 00 Seconds East a distance of 20.00 feet;

Thence North 84 Degrees 26 Minutes 00 Seconds East a distance of 565.94 feet;

Thence along an arc 1168.56 feet to the left, having a radius of 3769.70 feet, the chord of which is North 75 Degrees 33 Minutes 10 Seconds East for a distance of 1163.89 feet;

Thence North 23 Degrees 19 Minutes 40 Seconds West a distance of 10.00 feet;

Thence along an arc 117.39 feet to the left, having a radius of 3759.70 feet, the chord of which is North 65 Degrees 46 Minutes 40 Seconds East for a distance of 117.39 feet;

Thence North 64 Degrees 53 Minutes 00 Seconds East a distance of 30.73 feet;

Thence South 25 Degrees 07 Minutes 00 Seconds East a distance of 10.00 feet;

Thence North 64 Degrees 53 Minutes 00 Seconds East a distance of 200.00 feet;

Thence North 25 Degrees 07 Minutes 00 Seconds West a distance of 10.00 feet;

Thence North 64 Degrees 53 Minutes 00 Seconds East a distance of 100.00 feet;

Thence South 25 Degrees 07 Minutes 00 Seconds East a distance of 10.00 feet;

Thence North 64 Degrees 53 Minutes 00 Seconds East a distance of 416.81 feet;

Thence along an arc 912.95 feet to the left, having a radius of 2814.80 feet, the chord of which is North 55 Degrees 35 Minutes 30 Seconds East for a distance of 908.96 feet;

Thence North 46 Degrees 18 Minutes 00 Seconds East a distance of 1454.02 feet;

Thence North 43 Degrees 42 Minutes 00 Seconds West a distance of 40.00 feet;

Thence North 46 Degrees 18 Minutes 00 Seconds East a distance of 55.47 feet;

Thence North 47 Degrees 11 Minutes 12 Seconds East a distance of 154.10 feet;

Thence along an arc 495.16 feet to the right, having a radius of 1727.22 feet, the chord of which is North 57 Degrees 08 Minutes 15 Seconds East for a distance of 493.47 feet;

Thence North 67 Degrees 05 Minutes 18 Seconds East a distance of 154.11 feet;

Thence North 67 Degrees 58 Minutes 30 Seconds East a distance of 252.16 feet;

Thence North 67 Degrees 42 Minutes 46 Seconds East a distance of 71.62 feet;

Thence North 22 Degrees 52 Minutes 41 Seconds West a distance of 10.00 feet;

Thence North 65 Degrees 50 Minutes 00 Seconds East a distance of 71.99 feet;

Thence along an arc 203.59 feet to the left, having a radius of 1048.26 feet, the chord of which is North 58 Degrees 40 Minutes 07 Seconds East for a distance of 203.27 feet;

Thence North 36 Degrees 53 Minutes 43 Seconds West a distance of 30.00 feet;

Thence along an arc 486.43 feet to the left, having a radius of 1018.26 feet, the chord of which is North 39 Degrees 25 Minutes 10 Seconds East for a distance of 481.82 feet;

Thence North 23 Degrees 12 Minutes 06 Seconds East a distance of 141.48 feet;

Thence North 21 Degrees 59 Minutes 30 Seconds East a distance of 551.47 feet;

Thence North 68 Degrees 00 Minutes 30 Seconds West a distance of 20.00 feet;

Thence North 21 Degrees 59 Minutes 30 Seconds East a distance of 101.81 feet;

Thence North 22 Degrees 44 Minutes 15 Seconds East a distance of 153.93 feet;

Thence South 65 Degrees 53 Minutes 17 Seconds East a distance of 80.00 feet;

Thence along an arc 725.55 feet to the right, having a radius of 1979.86 feet, the chord of which is North 34 Degrees 41 Minutes 21 Seconds East for a distance of 721.50 feet;

Thence North 44 Degrees 48 Minutes 44 Seconds West a distance of 10.00 feet;

Thence along an arc 359.30 feet to the right, having a radius of 1989.86 feet, the chord of which is North 50 Degrees 21 Minutes 38 Seconds East for a distance of 358.81 feet;

Thence North 57 Degrees 01 Minutes 32 Seconds East a distance of 153.13 feet;

Thence North 57 Degrees 47 Minutes 00 Seconds East a distance of 455.14 feet;

Thence North 32 Degrees 13 Minutes 00 Seconds West a distance of 25.00 feet;

Thence North 57 Degrees 47 Minutes 00 Seconds East a distance of 1100.00 feet;

Thence North 32 Degrees 13 Minutes 00 Seconds West a distance of 20.00 feet;

Thence North 57 Degrees 47 Minutes 00 Seconds East a distance of 417.61 feet;

Thence North 53 Degrees 31 Minutes 50 Seconds East a distance of 269.90 feet;

Thence along an arc 628.77 feet to the left, having a radius of 511.62 feet, the chord of which is North 9 Degrees 04 Minutes 33 Seconds East for a distance of 589.94 feet;

Thence South 63 Degrees 52 Minutes 07 Seconds West a distance of 55.00 feet;

Thence along an arc 347.35 feet to the left, having a radius of 456.62 feet, the chord of which is North 47 Degrees 55 Minutes 27 Seconds West for a distance of 339.04 feet;

Thence North 79 Degrees 05 Minutes 22 Seconds West a distance of 256.99 feet;

Thence North 83 Degrees 13 Minutes 00 Seconds West a distance of 65.72 feet;

Thence North 6 Degrees 47 Minutes 00 Seconds East a distance of 30.00 feet;

Thence North 83 Degrees 13 Minutes 00 Seconds West a distance of 635.85 feet;

Thence North 81 Degrees 30 Minutes 02 Seconds West a distance of 213.00 feet;

Thence along an arc 1599.10 feet to the right, having a radius of 1296.92 feet, the chord of which is North 42 Degrees 53 Minutes 53 Seconds West for a distance of 1499.71 feet;

Thence North 82 Degrees 25 Minutes 29 Seconds East a distance of 10.00 feet;

Thence along an arc 636.69 feet to the right, having a radius of 1286.92 feet, the chord of which is North 6 Degrees 35 Minutes 52 Seconds East for a distance of 630.21 feet;

Thence North 24 Degrees 03 Minutes 13 Seconds East a distance of 212.13 feet;

Thence North 25 Degrees 46 Minutes 00 Seconds East a distance of 732.58 feet;

Thence South 64 Degrees 14 Minutes 00 Seconds East a distance of 35.00 feet;

Thence North 25 Degrees 46 Minutes 00 Seconds East a distance of 1250.00 feet, passing the intersection of US 119 and KY 987 at about 520 feet;

Thence North 64 Degrees 14 Minutes 00 Seconds West a distance of 145.00 feet;

Thence North 25 Degrees 46 Minutes 00 Seconds East a distance of 600.00 feet;

Thence South 64 Degrees 14 Minutes 00 Seconds East a distance of 180.00 feet;

Thence crossing US 119 South 26 Degrees 39 Minutes 53 Seconds East a distance of 246.02 feet to a point on US119 Right of Way;

Thence with said Right of Way South 64 Degrees 14 Minutes 00 Seconds East a distance of 65.00 feet;

Thence South 25 Degrees 46 Minutes 00 Seconds West a distance of 100.00 feet;

Thence South 64 Degrees 14 Minutes 00 Seconds East a distance of 50.00 feet;

Thence South 25 Degrees 46 Minutes 00 Seconds West a distance of 100.00 feet;

Thence South 64 Degrees 14 Minutes 00 Seconds East a distance of 75.00 feet;

Thence South 25 Degrees 46 Minutes 00 Seconds West a distance of 119.65 feet to a point on the KY 987 Right of Way;

Thence leaving US 119 Right of Way, and with the North Right of Way of KY 987 Right of Way North 66 Degrees 00 Minutes 00 Seconds East a distance of 604.35 feet;

Thence crossing to the south Side of Ky 987 South 24 Degrees 00 Minutes 00 Seconds East a distance of 60.00 feet;

Thence along the south side Right of Way South 66 Degrees 00 Minutes 00 Seconds West a distance of 735.00 feet to a point on the US 119 Right of Way;

Thence leaving the KY 987 Right of Way, and with US 119 Right of Way South 24 Degrees 00 Minutes 00 Seconds East a distance of 20.00 feet;

Thence South 66 Degrees 00 Minutes 00 Seconds West a distance of 22.80 feet;

Thence along an arc 152.47 feet to the left, having a radius of 308.09 feet, the chord of which is South 51 Degrees 49 Minutes 21 Seconds West for a distance of 150.92 feet;

Thence South 52 Degrees 19 Minutes 07 Seconds East a distance of 49.49 feet;

Thence South 34 Degrees 03 Minutes 00 Seconds West a distance of 293.67 feet;

Thence South 55 Degrees 57 Minutes 00 Seconds East a distance of 40.00 feet;

Thence South 34 Degrees 03 Minutes 00 Seconds West a distance of 270.74 feet;

Thence South 66 Degrees 03 Minutes 27 Seconds East a distance of 199.61 feet to the existing Right of Way in the center of Cumberland River;

Thence with the existing Right of Way and center of Cumberland River South 31 Degrees 48 Minutes 56 Seconds West a distance of 285.23 feet;

Thence South 31 Degrees 54 Minutes 22 Seconds West a distance of 520.14 feet;

Thence South 16 Degrees 22 Minutes 33 Seconds West a distance of 718.38 feet;

Thence South 16 Degrees 24 Minutes 08 Seconds West a distance of 148.32 feet;

Thence leaving the center of Cumberland River and continuing with the existing Right of Way South 89 Degrees 15 Minutes 23 Seconds West a distance of 241.12 feet;

Thence along an arc 1169.58 feet to the left, having a radius of 986.92 feet, the chord of which is South 33 Degrees 34 Minutes 22 Seconds East for a distance of 1102.33 feet;

Thence South 22 Degrees 28 Minutes 38 Seconds West a distance of 60.00 feet;

Thence along an arc 195.48 feet to the left, having a radius of 1046.92 feet, the chord of which is South 72 Degrees 52 Minutes 19 Seconds East for a distance of 195.20 feet;

Thence South 81 Degrees 35 Minutes 22 Seconds East a distance of 191.22 feet;

Thence South 83 Degrees 13 Minutes 00 Seconds East a distance of 685.85 feet;

Thence North 6 Degrees 47 Minutes 00 Seconds East a distance of 5.00 feet;

Thence South 78 Degrees 45 Minutes 47 Seconds East a distance of 339.60 feet;

Thence along an arc 855.39 feet to the right, having a radius of 741.62 feet, the chord of which is South 36 Degrees 40 Minutes 27 Seconds East for a distance of 808.75 feet;

Thence North 86 Degrees 22 Minutes 07 Seconds East a distance of 85.00 feet;

Thence along an arc 249.63 feet to the right, having a radius of 826.62 feet, the chord of which is South 5 Degrees 01 Minutes 11 Seconds West for a distance of 248.68 feet;

Thence South 49 Degrees 00 Minutes 00 Seconds East a distance of 22.44 feet;

Thence along an arc 247.12 feet to the right, having a radius of 846.62 feet, the chord of which is South 22 Degrees 43 Minutes 50 Seconds West for a distance of 246.25 feet;

Thence South 57 Degrees 00 Minutes 00 Seconds East a distance of 46.11 feet;

Thence South 48 Degrees 27 Minutes 26 Seconds West a distance of 32.32 feet;

Thence North 49 Degrees 25 Minutes 01 Seconds West a distance of 9.04 feet;

Thence South 52 Degrees 09 Minutes 03 Seconds West a distance of 344.26 feet;

Thence South 67 Degrees 03 Minutes 04 Seconds West a distance of 812.14 feet;

Thence South 26 Degrees 04 Minutes 05 Seconds East a distance of 15.08 feet;

Thence South 66 Degrees 38 Minutes 05 Seconds West a distance of 54.99 feet;

Thence South 52 Degrees 31 Minutes 41 Seconds West a distance of 228.92 feet;

Thence South 69 Degrees 00 Minutes 12 Seconds West a distance of 227.13 feet;

Thence South 61 Degrees 28 Minutes 33 Seconds West a distance of 170.37 feet;

Thence South 23 Degrees 33 Minutes 54 Seconds East a distance of 150.66 feet to a point in the center of the Cumberland River;

Thence continuing with the existing Right of Way and center of the Cumberland River South 70 Degrees 19 Minutes 33 Seconds West a distance of 49.51 feet;

Thence South 70 Degrees 32 Minutes 34 Seconds West a distance of 149.84 feet;

Thence South 60 Degrees 46 Minutes 46 Seconds West a distance of 76.22 feet;

Thence South 56 Degrees 01 Minutes 38 Seconds West a distance of 180.46 feet;

Thence South 55 Degrees 20 Minutes 28 Seconds West a distance of 154.77 feet;

Thence South 53 Degrees 32 Minutes 07 Seconds West a distance of 220.77 feet;

Thence South 52 Degrees 10 Minutes 56 Seconds West a distance of 151.14 feet;

Thence South 44 Degrees 58 Minutes 54 Seconds West a distance of 161.30 feet;

Thence South 44 Degrees 06 Minutes 01 Seconds West a distance of 131.07 feet;

Thence South 41 Degrees 13 Minutes 55 Seconds West a distance of 105.96 feet;

Thence South 33 Degrees 32 Minutes 45 Seconds West a distance of 141.85 feet;

Thence South 29 Degrees 09 Minutes 33 Seconds West a distance of 122.86 feet;

Thence South 22 Degrees 13 Minutes 54 Seconds West a distance of 109.24 feet;

Thence South 21 Degrees 57 Minutes 08 Seconds West a distance of 167.75 feet;

Thence South 21 Degrees 14 Minutes 17 Seconds West a distance of 137.71 feet;

Thence South 19 Degrees 29 Minutes 20 Seconds West a distance of 267.26 feet;

Thence South 17 Degrees 24 Minutes 27 Seconds West a distance of 206.45 feet;

Thence South 18 Degrees 05 Minutes 35 Seconds West a distance of 258.38 feet;

Thence South 19 Degrees 44 Minutes 48 Seconds West a distance of 141.77 feet;

Thence North 54 Degrees 49 Minutes 20 Seconds West a distance of 194.73 feet;

Thence leaving the Cumberland River and continuing with the existing Right of Way South 25 Degrees 46 Minutes 07 Seconds West a distance of 53.39 feet;

Thence South 29 Degrees 07 Minutes 01 Seconds West a distance of 59.01 feet;

Thence South 31 Degrees 42 Minutes 26 Seconds West a distance of 52.69 feet;

Thence South 44 Degrees 16 Minutes 56 Seconds West a distance of 37.23 feet;

Thence South 46 Degrees 07 Minutes 27 Seconds West a distance of 48.63 feet;

Thence South 52 Degrees 46 Minutes 44 Seconds West a distance of 47.73 feet;

Thence South 57 Degrees 12 Minutes 30 Seconds West a distance of 80.83 feet;

Thence South 58 Degrees 47 Minutes 30 Seconds West a distance of 27.53 feet;

Thence South 55 Degrees 59 Minutes 12 Seconds West a distance of 42.25 feet;

Thence along an arc 182.05 feet to the right, having a radius of 1208.26 feet, the chord of which is South 59 Degrees 54 Minutes 58 Seconds West for a distance of 181.88 feet;

Thence South 64 Degrees 51 Minutes 53 Seconds West a distance of 28.27 feet;

Thence South 24 Degrees 31 Minutes 58 Seconds East a distance of 10.00 feet;

Thence South 67 Degrees 07 Minutes 47 Seconds West a distance of 125.78 feet;

Thence South 67 Degrees 58 Minutes 30 Seconds West a distance of 252.16 feet;

Thence South 67 Degrees 06 Minutes 35 Seconds West a distance of 146.78 feet;

Thence along an arc 449.29 feet to the left, having a radius of 1567.22 feet, the chord of which is South 57 Degrees 08 Minutes 15 Seconds West for a distance of 447.76 feet;

Thence South 47 Degrees 09 Minutes 55 Seconds West a distance of 146.78 feet;

Thence South 46 Degrees 18 Minutes 00 Seconds West a distance of 55.46 feet;

Thence North 43 Degrees 42 Minutes 00 Seconds West a distance of 20.00 feet;

Thence South 46 Degrees 18 Minutes 00 Seconds West a distance of 1454.02 feet;

Thence along an arc 708.12 feet to the right, having a radius of 2914.80 feet, the chord of which is South 53 Degrees 15 Minutes 35 Seconds West for a distance of 706.38 feet;

Thence North 29 Degrees 46 Minutes 50 Seconds West a distance of 15.00 feet;

Thence along an arc 236.04 feet to the right, having a radius of 2899.80 feet, the chord of which is South 62 Degrees 33 Minutes 05 Seconds West for a distance of 235.98 feet;

Thence South 64 Degrees 53 Minutes 00 Seconds West a distance of 41.81 feet;

Thence South 25 Degrees 07 Minutes 00 Seconds East a distance of 15.00 feet;

Thence South 64 Degrees 53 Minutes 00 Seconds West a distance of 705.73 feet;

Thence along an arc 1320.39 feet to the right, having a radius of 3869.70 feet, the chord of which is South 74 Degrees 39 Minutes 30 Seconds West for a distance of 1313.99 feet;

Thence South 84 Degrees 26 Minutes 00 Seconds West a distance of 1076.44 feet;

Thence along an arc 1588.54 feet to the right, having a radius of 1619.70 feet, the chord of which is North 67 Degrees 28 Minutes 12 Seconds West for a distance of 1525.63 feet;

Thence North 50 Degrees 37 Minutes 36 Seconds East a distance of 20.00 feet;

Thence along an arc 203.82 feet to the right, having a radius of 1599.70 feet, the chord of which is North 35 Degrees 43 Minutes 23 Seconds West for a distance of 203.68 feet;

Thence South 57 Degrees 55 Minutes 37 Seconds West a distance of 20.00 feet;

Thence along an arc 825.23 feet to the right, having a radius of 1619.70 feet, the chord of which is North 17 Degrees 28 Minutes 38 Seconds West for a distance of 816.33 feet;

Thence South 87 Degrees 07 Minutes 08 Seconds West a distance of 10.00 feet;

Thence along an arc 247.87 feet to the right, having a radius of 1629.70 feet, the chord of which is North 1 Degree 28 Minutes 34 Seconds East for a distance of 247.63 feet;

Thence North 5 Degrees 50 Minutes 00 Seconds East a distance of 111.50 feet;

Thence South 84 Degrees 10 Minutes 00 Seconds East a distance of 10.00 feet;

Thence North 5 Degrees 50 Minutes 00 Seconds East a distance of 250.00 feet;

Thence North 84 Degrees 10 Minutes 00 Seconds West a distance of 10.00 feet;

Thence North 5 Degrees 50 Minutes 00 Seconds East a distance of 200.00 feet;

Thence South 84 Degrees 10 Minutes 00 Seconds East a distance of 10.00 feet;

Thence North 5 Degrees 50 Minutes 00 Seconds East a distance of 804.40 feet to a point on the existing Pineville City Limits line having the state plane coordinate value of North 3431747.49, East 5538968.16;

Thence to close the description South 84 Degrees 10 Minutes 00 Seconds East a distance of 100.00 feet and the POINT OF BEGINNING.

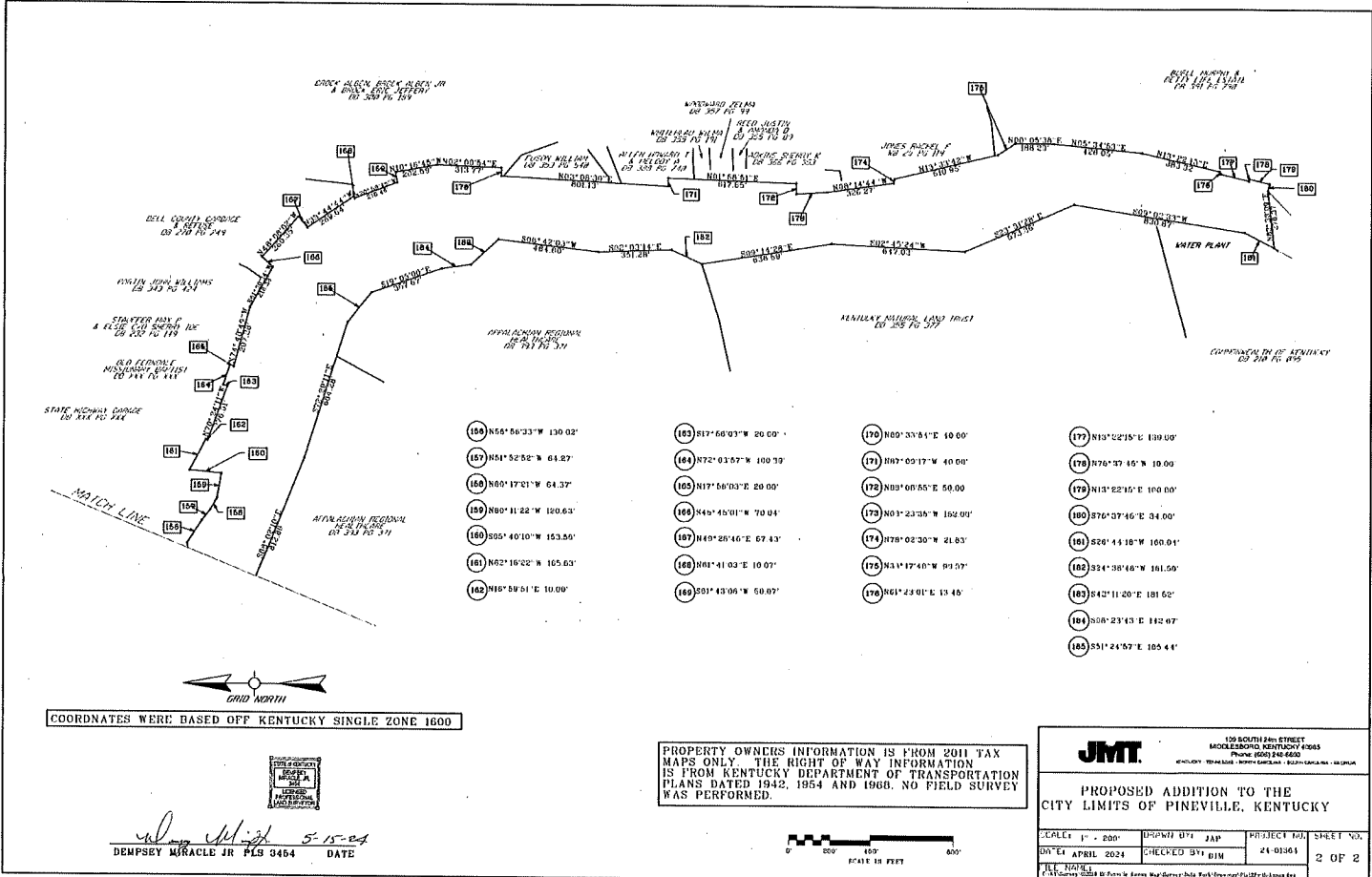
The above described parcel contains 102.94 acres (4483923.41 sq. ft.)



*Dempsey Miracle, Jr.*  
6-30-21





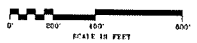


COORDINATES WERE BASED OFF KENTUCKY SINGLE ZONE 1600



*Dempsey M. Jracle, Jr.*  
 DEMPSEY M JRACLE JR PLS 3454 DATE 5-15-24

PROPERTY OWNERS INFORMATION IS FROM 2011 TAX MAPS ONLY. THE RIGHT OF WAY INFORMATION IS FROM KENTUCKY DEPARTMENT OF TRANSPORTATION PLANS DATED 1942, 1954 AND 1968. NO FIELD SURVEY WAS PERFORMED.



- |                            |                            |                            |                            |
|----------------------------|----------------------------|----------------------------|----------------------------|
| (150) N56°56'33" W 130.02' | (163) S17°56'03" W 20.00'  | (170) N00°33'01" E 40.00'  | (177) N13°22'15" E 110.00' |
| (151) N51°52'52" W 64.27'  | (164) N72°03'57" W 100.79' | (171) N07°09'17" W 40.00'  | (178) N76°37'45" W 10.00'  |
| (152) N00°17'31" W 64.37'  | (165) N17°54'03" E 20.00'  | (172) N00°00'55" E 50.00'  | (179) N13°22'15" E 100.00' |
| (153) N00°11'22" W 120.63' | (166) N45°45'01" W 70.04'  | (173) N03°23'35" W 192.00' | (180) S76°37'46" E 34.00'  |
| (154) S05°40'10" W 153.50' | (167) N49°20'46" E 67.43'  | (174) N78°02'30" W 21.85'  | (181) S26°43'18" W 100.01' |
| (155) N02°16'22" W 105.63' | (168) N01°41'03" E 10.00'  | (175) N31°17'40" W 91.57'  | (182) S24°38'48" W 161.50' |
| (156) N16°59'51" E 10.00'  | (169) S01°43'06" W 60.00'  | (176) S01°23'01" E 13.46'  | (183) S42°11'20" E 181.62' |
|                            |                            |                            | (184) S06°23'43" E 182.07' |
|                            |                            |                            | (185) S51°24'57" E 105.41' |

<b>JMT.</b>			
129 SOUTH 2ND STREET MIDDLEBORO, KENTUCKY 40365 Phone: (606) 248-6620 FAX: (606) 248-6620			
<b>PROPOSED ADDITION TO THE CITY LIMITS OF PINEVILLE, KENTUCKY</b>			
SCALE: 1" = 200'	DRAWN BY: JAP	PROJECT NO.: 24-01363	SHEET NO.: 2 OF 2
DATE: APRIL 2024	CHECKED BY: BJM		
ALL RIGHTS RESERVED BY JMT. No part of this publication may be reproduced without the prior written permission of JMT.			