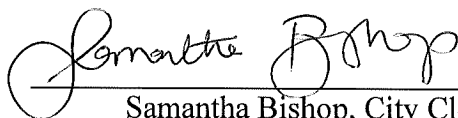
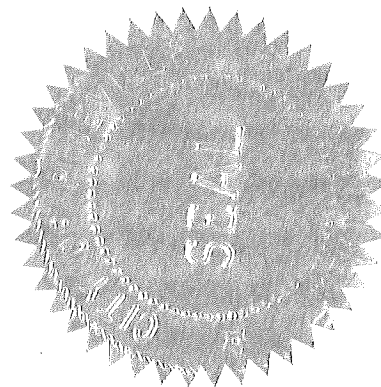


## City Clerk's Certification of Ordinance

I certify I am the duly qualified City Clerk of the City of Pineville, Kentucky,  
and the following 2 pages of Ordinance dated 11/11/2024 is a true, correct and complete  
copy duly adopted by the City Council at a duly convened meeting held on 11/11/2024, all  
as appears in the official records of said City.

WITNESS, my hand and the Seal of the City of Pineville, this 11<sup>th</sup> day of November, 2024.

  
Samantha Bishop, City Clerk



RECEIVED AND FILED  
DATE May 30<sup>th</sup> 2025  
2025  
MICHAEL G. ADAMS  
SECRETARY OF STATE  
COMMONWEALTH OF KENTUCKY  
BY Jaime Phillips

CITY OF PINEVILLE  
ORDINANCE NO. 2024 01

**AN ORDINANCE STATING THE CITY OF PINEVILLE'S  
INTENTION TO ANNEX  
102.882 ACRES, MORE OR LESS,  
BEGINNING AT A POINT SOUTH OF THE BELL COUNTY DISTRICT OF FINANCE AND  
CONTINUING TO WATER PLANT,  
LYING ADJACENT AND CONTIGUOUS TO THE EXISTING CITY LIMITS OF THE CITY OF  
PINEVILLE, BELL COUNTY, KENTUCKY**

WHEREAS, Kentucky Revised Statute 81A.410 authorizes and delegates city legislative bodies the authority to annex territories; and

WHEREAS, the City of Pineville, found, pursuant to KRS 81A.410, that the herein described unincorporated territory was subject to annexation as it was adjacent and contiguous to the City of Pineville's boundaries when the annexation proceeding began; and by reason of the land's commercial, industrial, institutional, or governmental use, the land is desirable in nature; and

WHEREAS, the City of Pineville has determined that no part of the area to be annexed was included within the boundary of another incorporated city; and

WHEREAS, the City Council of the City of Pineville hereby state the City of Pineville's intention to annex the real estate described in "Exhibit A," which is attached hereto and incorporated herein by reference; and

NOW THEREFORE, the City Council of the City of Pineville, Bell County, Kentucky, acting by and through its City Council, does hereby ordain as follows:

**SECTION I**

That the City Council of the City of Pineville, Bell County, Kentucky, an incorporated city of the fourth class hereby states its intention to annex to the City approximately 102.882 acres of unincorporated territory as described in Exhibit "A," which is attached hereto and incorporated herein by reference and includes it within the territorial limits of the City of Pineville, Bell County, Kentucky.

**SECTION II**

The City Council of the City of Pineville finds that the aforementioned territory is by reason of population density, commercial, industrial, institutional, or governmental use of land, or subdivision of land, is suitable for incorporation into the City of Pineville without unreasonable delay.

**SECTION III**

The City Council of the City of Pineville hereby declares that it is desirable to annex the territory as described in Exhibit "A," which is attached hereto, and incorporated by reference and subject to this ordinance. The City has established zoning for the new territory subject to this ordinance and as attached in Exhibit "B," QFDS which is attached hereto and incorporated herein by reference.

**Section IV**

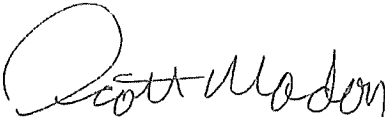
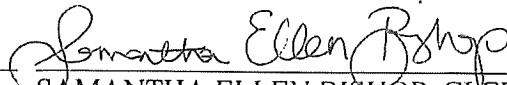
That pursuant to KRS 81A.425 notice shall be sent by first-class mail to each property owner listed on the records of the Bell County Property Valuation Administrator as of October 1, 2024 no later than fourteen (14) days prior to the meeting at which this Ordinance proposing annexation shall receive its second reading, and a copy of this proposed Ordinance.

**SECTION V**

That this ordinance shall be signed by the Mayor, attested by the City Clerk, recorded, published, and effective upon publication.

**The City of Pineville is enacting this Ordinance pursuant to the laws of the Commonwealth of Kentucky and its police powers.**

Now be it Ordained and Adopted this 11<sup>th</sup> day of November, 2024.

EXECUTED:    
SCOTT MADON, MAYOR                      SAMANTHA ELLEN BISHOP, CLERK  
CITY OF PINEVILLE                      CITY OF PINEVILLE

**FIRST READING**

## City of Pineville Annex

### Bell County Highschool to Water Plant

Beginning at a point South of Bell County Highschool on the existing Right of Way of US 25E

having a Kentucky Single Zone State Plane coordinate value of N 3425061.70, E 5523800.22 said

point being on the existing Pineville City Limits;

Thence in a counter clockwise direction along existing 25E Right of Way South 26 Degrees 16 Minutes 57

Seconds West a distance of

992.54 feet;

Thence continuing with the Right of Way of US 25E South 62 Degrees 55 Minutes 39 Seconds East a

distance of 20.00 feet;

Thence South 27 Degrees 04 Minutes 21 Seconds West a distance of 200.00 feet;

Thence South 70 Degrees 49 Minutes 16 Seconds West a distance of 137.80 feet;

Thence South 15 Degrees 01 Minutes 47 Seconds West a distance of 291.04 feet;

Thence South 35 Degrees 29 Minutes 56 Seconds East a distance of 66.79 feet;

Thence South 07 Degrees 44 Minutes 06 Seconds West a distance of 107.46 feet;

Thence South 84 Degrees 09 Minutes 05 Seconds East a distance of 30.00 feet;

Thence South 01 Degrees 16 Minutes 47 Seconds East a distance of 260.79 feet;

Thence South 83 Degrees 46 Minutes 36 Seconds West a distance of 85.00 feet;

Thence South 01 Degrees 41 Minutes 13 Seconds East a distance of 340.59 feet;

Thence South 40 Degrees 20 Minutes 12 Seconds East a distance of 163.15 feet;

Thence South 25 Degrees 04 Minutes 17 Seconds East a distance of 200.65 feet;

Thence South 28 Degrees 49 Minutes 19 Seconds East a distance of 862.70 feet;

Thence South 46 Degrees 06 Minutes 14 Seconds West a distance of 53.08 feet;

Thence South 55 Degrees 15 Minutes 56 Seconds East a distance of 50.12 feet;

Thence South 44 Degrees 00 Minutes 13 Seconds West a distance of 134.25 feet;

Thence North 58 Degrees 53 Minutes 09 Seconds East a distance of 147.15 feet;

Thence South 28 Degrees 08 Minutes 00 Seconds East a distance of 108.02 feet;

Thence South 23 Degrees 27 Minutes 51 Seconds East a distance of 222.44 feet;

Thence South 40 Degrees 18 Minutes 27 Seconds West a distance of 65.00 feet;

Thence South 38 Degrees 22 Minutes 57 Seconds East a distance of 101.98 feet;

Thence South 31 Degrees 09 Minutes 29 Seconds East a distance of 140.36 feet;

Thence South 34 Degrees 34 Minutes 06 Seconds East a distance of 191.64 feet;

Thence South 31 Degrees 07 Minutes 37 Seconds East a distance of 95.79 feet;

Thence South 11 Degrees 00 Minutes 32 Seconds East a distance of 331.42 feet;

Thence South 44 Degrees 55 Minutes 10 Seconds East a distance of 952.86 feet;

Thence South 68 Degrees 02 Minutes 10 Seconds East a distance of 812.89 feet;

Thence South 72 Degrees 29 Minutes 11 Seconds East a distance of 684.28 feet;

Thence South 51 Degrees 24 Minutes 57 Seconds East a distance of 185.44 feet;

Thence South 19 Degrees 05 Minutes 00 Seconds East a distance of 357.67 feet;

Thence South 08 Degrees 23 Minutes 43 Seconds East a distance of 142.67 feet;

Thence South 42 Degrees 11 Minutes 20 Seconds East a distance of 181.52 feet;

Thence South 06 Degrees 42 Minutes 03 Seconds West a distance of 484.60 feet;

Thence South 02 Degrees 03 Minutes 14 Seconds East a distance of 351.28 feet;

Thence South 24 Degrees 38 Minutes 48 Seconds West a distance of 161.56 feet;

Thence South 09 Degrees 14 Minutes 28 Seconds East a distance of 636.59 feet;

Thence South 02 Degrees 45 Minutes 24 Seconds West a distance of 647.02 feet;

Thence South 23 Degrees 31 Minutes 28 Seconds East a distance of 573.36 feet;

Thence South 09 Degrees 02 Minutes 33 Seconds West a distance of 830.87 feet;

Thence South 26 Degrees 44 Minutes 18 Seconds West a distance of 160.04 feet

To a point in the existing Right of Way of US 25E with a coordinate N 3414965.13

E 5526638.48 thence crossing US 25E North 83 Degrees 33 Minutes 09 Seconds East

a distance of 276.37 feet to a point in the existing Right of Way of US 25E having a Kentucky Single Zone

State Plane coordinate value of N 3414966.16 E 5526909.10; Thence running along the existing Right of

Way of US 25E South 76 Degrees 37 Minutes 45 Seconds East a distance of 34.00 feet;

Thence North 13 Degrees 22 Minutes 15 Seconds East a distance of 100.00 feet;

Thence North 76 Degrees 37 Minutes 45 Seconds West a distance of 10.00 feet;

Thence North 13 Degrees 22 Minutes 15 Seconds East a distance of 139.00 feet;

Thence North 61 Degrees 23 Minutes 01 Seconds East a distance of 13.45 feet;

Thence North 13 Degrees 22 Minutes 15 Seconds East a distance of 383.32 feet;

Thence North 05 Degrees 34 Minutes 53 Seconds East a distance of 426.05 feet;

Thence North 00 Degrees 05 Minutes 38 Seconds East a distance of 188.29 feet;

Thence North 33 Degrees 17 Minutes 40 Seconds West a distance of 99.37 feet;

Thence North 13 Degrees 33 Minutes 42 Seconds West a distance of 510.95 feet;

Thence North 78 Degrees 02 Minutes 30 Seconds West a distance of 21.83 feet;

Thence North 08 Degrees 14 Minutes 44 Seconds West a distance of 326.27 feet;

Thence North 03 Degrees 23 Minutes 35 Seconds West a distance of 152.00 feet;

Thence North 88 Degrees 08 Minutes 55 Seconds East a distance of 50.00 feet;

Thence North 01 Degrees 58 Minutes 51 Seconds East a distance of 617.65 feet;

Thence North 87 Degrees 09 Minutes 17 Seconds West a distance of 40.00 feet;

Thence North 03 Degrees 08 Minutes 30 Seconds East a distance of 801.13 feet;

Thence North 89 Degrees 33 Minutes 54 Seconds East a distance of 40.00 feet;

Thence North 02 Degrees 00 Minutes 54 Seconds East a distance of 313.77 feet;

Thence North 10 Degrees 16 Minutes 45 Seconds West a distance of 202.59 feet;

Thence South 81 Degrees 43 Minutes 06 Seconds West a distance of 50.07 feet;

Thence North 20 Degrees 58 Minutes 45 Seconds West a distance of 218.46 feet;

Thence North 61 Degrees 41 Minutes 03 Seconds East a distance of 10.07 feet;

Thence North 33 Degrees 44 Minutes 44 Seconds West a distance of 269.64 feet;

Thence North 49 Degrees 28 Minutes 46 Seconds East a distance of 67.43 feet;

Thence North 48 Degrees 08 Minutes 02 Seconds West a distance of 260.35 feet;

Thence South 45 Degrees 45 Minutes 01 Seconds West a distance of 70.04 feet;

Thence North 61 Degrees 30 Minutes 34 Seconds West a distance of 218.38 feet;

Thence North 74 Degrees 48 Minutes 49 Seconds West a distance of 297.28 feet;

Thence North 17 Degrees 56 Minutes 03 Seconds East a distance of 20.00 feet;

Thence North 72 Degrees 03 Minutes 57 Seconds West a distance of 100.39 feet;

Thence South 17 Degrees 56 Minutes 03 Seconds West a distance of 20.00 feet;

Thence North 70 Degrees 24 Minutes 11 Seconds West a distance of 276.91 feet;

Thence North 16 Degrees 59 Minutes 51 Seconds East a distance of 10.00 feet;

Thence North 62 Degrees 16 Minutes 22 Seconds West a distance of 165.63 feet;

Thence South 05 Degrees 40 Minutes 10 Seconds West a distance of 153.56 feet;

Thence North 80 Degrees 11 Minutes 22 Seconds West a distance of 120.63 feet;

Thence North 60 Degrees 17 Minutes 21 Seconds West a distance of 64.37 feet;

Thence North 51 Degrees 52 Minutes 52 Seconds West a distance of 64.27 feet;

Thence North 56 Degrees 56 Minutes 33 Seconds West a distance of 130.02 feet;

Thence South 80 Degrees 41 Minutes 12 Seconds West a distance of 122.64 feet;

Thence North 23 Degrees 57 Minutes 22 Seconds West a distance of 55.97 feet;

Thence North 36 Degrees 51 Minutes 59 Seconds West a distance of 101.50 feet;

Thence North 62 Degrees 49 Minutes 04 Seconds West a distance of 97.18 feet;

Thence North 24 Degrees 43 Minutes 30 Seconds West a distance of 204.15 feet

to the centerline of Highway 3151 and thence running along the centerline of

said Highway North 58 Degrees 21 Minutes 21 Seconds West a distance of 18.57 feet;

Thence North 52 Degrees 34 Minutes 46 Seconds West a distance of 92.95 feet;

Thence North 51 Degrees 07 Minutes 53 Seconds West a distance of 39.78 feet;

Thence North 40 Degrees 26 Minutes 35 Seconds West a distance of 37.71 feet;

Thence North 32 Degrees 38 Minutes 01 Seconds West a distance of 138.33 feet;

Thence North 26 Degrees 33 Minutes 55 Seconds West a distance of 119.50 feet;

Thence North 25 Degrees 47 Minutes 51 Seconds West a distance of 83.75 feet;

Thence North 23 Degrees 48 Minutes 29 Seconds West a distance of 56.35 feet;

Thence North 33 Degrees 15 Minutes 13 Seconds West a distance of 62.91 feet;

Thence North 30 Degrees 45 Minutes 56 Seconds West a distance of 127.66 feet;

Thence North 46 Degrees 19 Minutes 55 Seconds West a distance of 121.27 feet;

Thence North 58 Degrees 41 Minutes 38 Seconds West a distance of 62.94 feet;

Thence leaving the centerline of Highway 3151 North 15 Degrees 05 Minutes 00 Seconds West  
a distance of 157.00 feet;

Thence North 06 Degrees 13 Minutes 23 Seconds East a distance of 346.57 feet;

Thence North 32 Degrees 26 Minutes 06 Seconds West a distance of 458.71 feet;

Thence North 13 Degrees 48 Minutes 15 Seconds West a distance of 235.28 feet;

Thence North 21 Degrees 57 Minutes 45 Seconds East a distance of 170.84 feet;

Thence North 80 Degrees 37 Minutes 41 Seconds West a distance of 80.80 feet;

Thence South 59 Degrees 48 Minutes 19 Seconds West a distance of 110.16 feet;

Thence South 53 Degrees 27 Minutes 55 Seconds West a distance of 60.83 feet;

Thence North 19 Degrees 02 Minutes 26 Seconds West a distance of 632.56 feet;

Thence North 09 Degrees 11 Minutes 40 Seconds West a distance of 532.10 feet;

Thence North 19 Degrees 47 Minutes 02 Seconds East a distance of 553.06 feet;

Thence North 26 Degrees 11 Minutes 44 Seconds East a distance of 877.74 feet

to a point in the existing Right of Way along US 25E having a Kentucky Single Zone State Plane

coordinate value of N 3424919.15 E 5524046.59 thence crossing US 25E North 59 Degrees 56 Minutes

49 Seconds West a distance of 284.64 feet and the POINT OF BEGINNING.

The above-described parcel contains 102.882 acres (4481555.040 sq. ft.)

*Handwritten signature*  
*5-30-25*

STATE of KENTUCKY
DEMPSEY MIRACLE, JR. 3454
LICENSED PROFESSIONAL LAND SURVEYOR

- (115) S85°27'55" W 60.83'
- (116) S60°48'10" W 110.16'
- (117) N80°37'41" W 80.80'
- (118) N21°57'45" E 170.84'
- (119) N15°05'00" W 157.00'
- (120) N50°11'30" W 62.94'
- (121) N46°10'25" W 121.27'
- (122) S30°45'56" W 127.66'
- (123) N32°15'13" W 62.30'
- (124) N22°48'20" W 56.35'
- (125) N28°47'51" W 83.75'
- (126) N28°29'55" W 118.50'
- (127) N32°38'01" W 138.35'
- (128) N40°28'35" W 37.71'
- (129) N51°07'53" W 39.78'
- (130) N52°34'46" W 92.95'
- (131) S68°21'21" W 18.57'
- (132) N21°43'30" W 204.15'
- (133) N62°48'04" W 87.18'
- (134) N28°51'58" W 101.50'
- (135) N22°57'22" W 55.97'
- (136) S00°41'12" W 122.64'
- (137) S31°07'37" E 95.79'
- (138) S24°24'06" E 101.84'
- (139) S31°09'29" E 140.36'
- (140) S38°22'57" E 101.98'
- (141) S40°18'27" W 65.00'
- (142) S23°27'51" E 282.44'
- (143) S28°08'00" E 108.02'
- (144) N50°53'09" E 147.15'

- (145) S44°00'13" W 134.25'
- (146) S56°15'56" E 50.12'
- (147) S48°08'44" W 53.08'
- (148) S25°04'17" E 200.65'
- (149) S40°20'12" E 183.15'
- (150) S83°48'38" W 85.00'
- (151) S44°08'05" E 30.00'
- (152) S07°44'06" W 107.46'
- (153) S32°28'56" E 66.78'
- (154) S70°40'18" W 137.90'
- (155) S82°55'39" E 20.00'

COORDINATES WERE BASED ON KENTUCKY SINGLE ZONE 1828

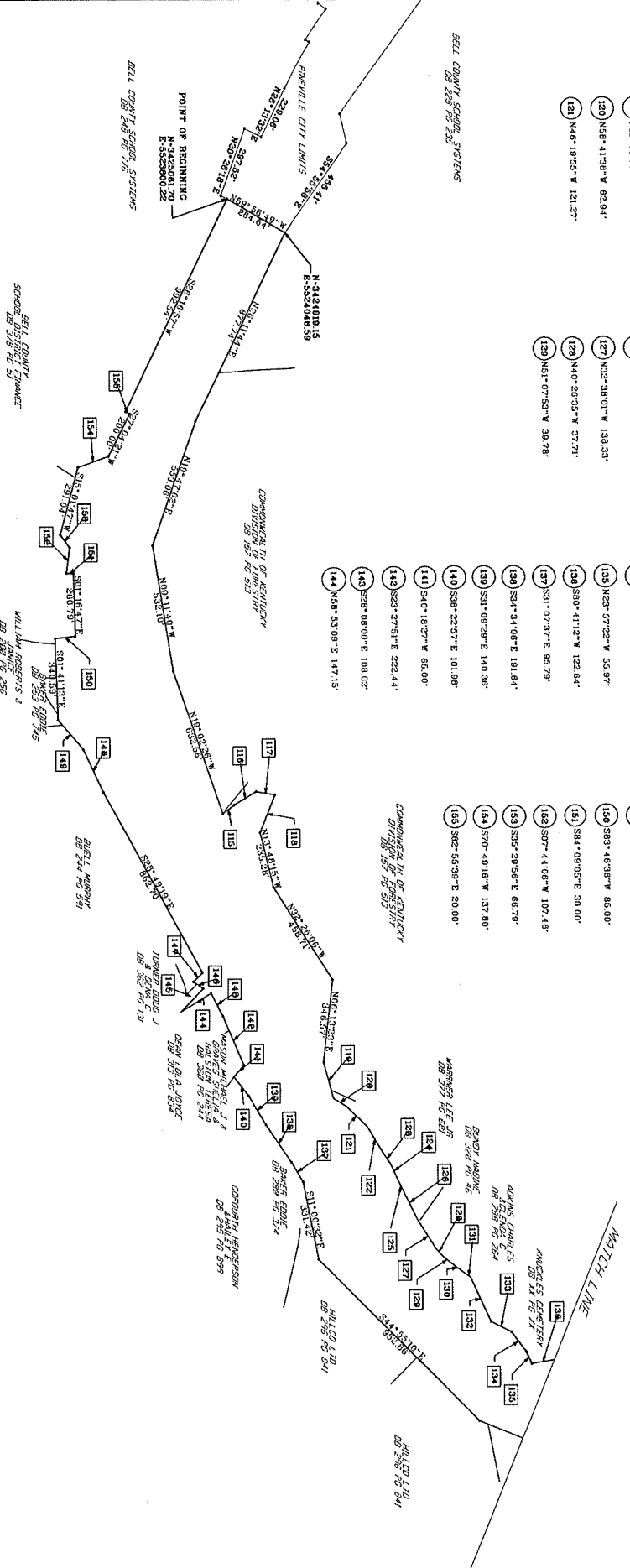


COMMONWEALTH OF KENTUCKY  
DIVISION OF LAND SURVEY  
DB 257 PG 513

COMMONWEALTH OF KENTUCKY  
DIVISION OF LAND SURVEY  
DB 157 PG 513

COMMONWEALTH OF KENTUCKY  
DIVISION OF LAND SURVEY  
DB 257 PG 513

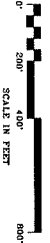
BELL COUNTY SCHOOL SYSTEMS  
DB 243 PG 245



PROPERTY OWNERS INFORMATION IS FROM 2011 TAX MAPS ONLY. THE RIGHT OF WAY INFORMATION IS FROM KENTUCKY DEPARTMENT OF TRANSPORTATION PLANS DATED 1942, 1954 AND 1968 NO FIELD SURVEY WAS PERFORMED.

DATE 5-15-24  
DRAWN BY JAP  
PROJECT NO. 1  
SHEET NO. 1 OF 2

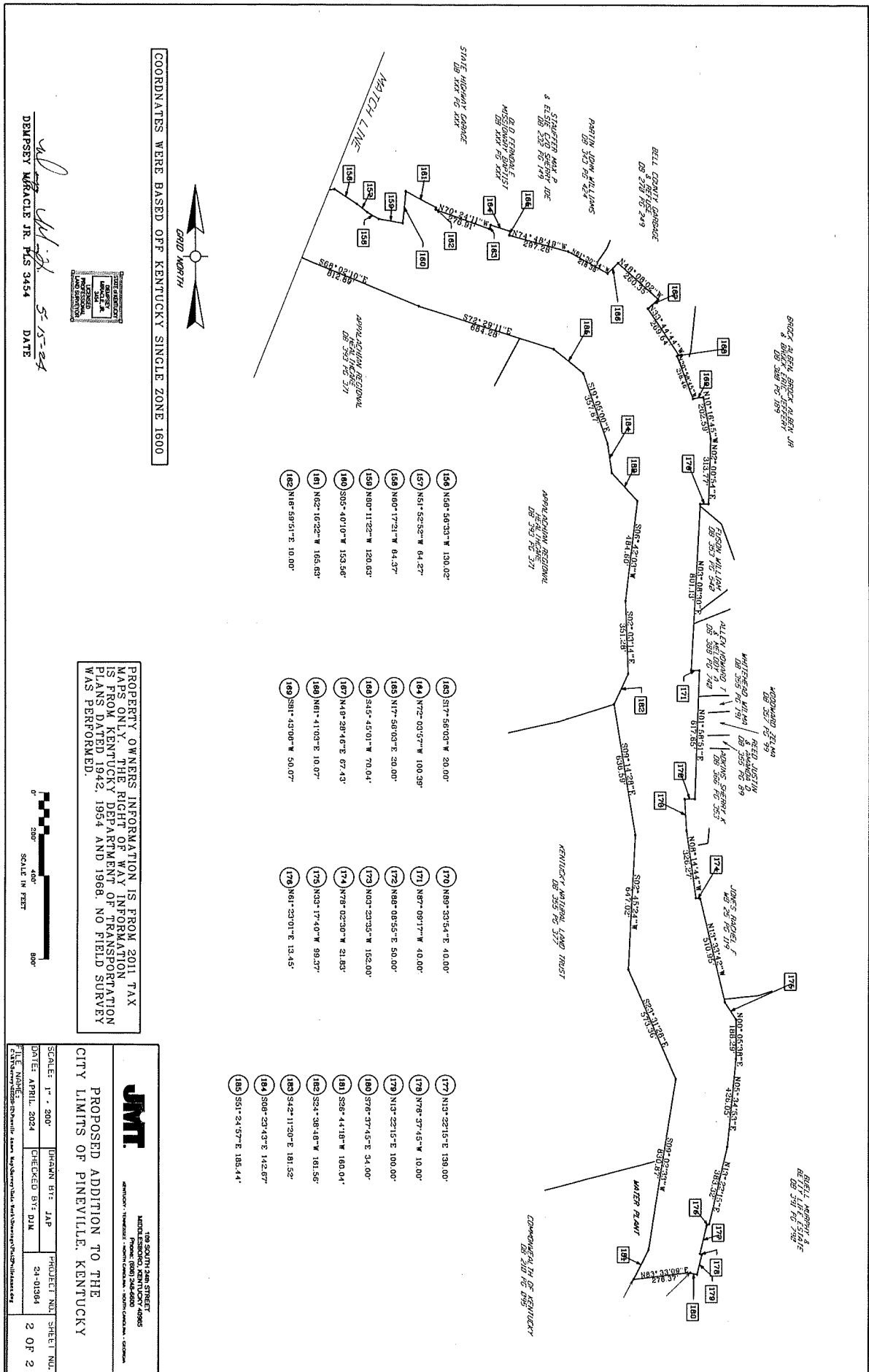
DBMPSEY MIRACIE/JR. PLS 3454



**JMT**  
JAMES M. TAYLOR & ASSOCIATES  
LAND SURVEYORS  
140 SOUTH MAIN STREET  
MIDDLEBORO, KENTUCKY 40660  
PHONE (606) 246-6800


PROJECT NO. 1  
SHEET NO. 1 OF 2

DRAWN BY: JAP  
CHECKED BY: DJW  
DATE: APRIL, 2024

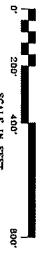


COORDINATES WERE BASED OFF KENTUCKY SINGLE ZONE 1600




  
 Darpest Marcie Jr. P.E. No. 3454
   
 DATE: 5-15-24

PROPERTY OWNERS INFORMATION IS FROM 2011 TAX MAPS ONLY. THE RIGHT OF WAY INFORMATION IS FROM KENTUCKY DEPARTMENT OF TRANSPORTATION PLANS DATED 1942, 1964 AND 1968. NO FIELD SURVEY WAS PERFORMED.



<b>JMT</b> 108 SOUTH 34th STREET MADISON, KENTUCKY 40403 <small>ARCHITECT • ENGINEER • SURVEYOR • LANDSCAPE ARCHITECT • PLANNING</small>		SCALE: 1" = 200'	DRAWN BY: JAP	PROJECT NO.: SHEET NO.
		DATE: APRIL 2024	CHECKED BY: DJM	24-0194
CITY LIMITS OF PINEVILLE, KENTUCKY		2 OF 2		