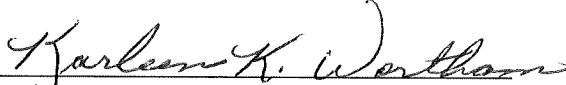


**CERTIFICATE OF CITY CLERK**

I, Karleen K. Wortham, hereby certify that I am the duly qualified and acting City Clerk of the City of Richmond, Kentucky, that the foregoing Ordinance is a true and correct copy of Ordinance No. 06-15, annexing 8.836 acres of land adjacent to the city limits and owned by the City of Richmond. That said Ordinance was introduced and given first reading by the Board of Commissioners of said City on May 9 2006, and that it was placed and remained on file in my office for public inspection until May 23, 2006, on which date it was given its second reading and final enactment by said Board, that said meetings were duly held in accordance with all applicable requirements of Kentucky law, including KRS 61.810, 61.815, 61.820, and 61.825, that a quorum was present at each of said meetings, that said Ordinance has been ordered to be published by title and summary contained in a Notice of Enactment and Summary of Ordinance, and that said Ordinance has not been modified, amended, revoked, or repealed, and that same is now in full force and effect.

**IN TESTIMONY WHEREOF**, witness my signature as City Clerk and the official Seal of said City this the 23<sup>rd</sup> day of May 2006.

  
Karleen K. Wortham, City Clerk

(Seal of City)

RECEIVED AND FILED  
DATE May 30, 2006  
\_\_\_\_\_  
\_\_\_\_\_  
TREY GRAYSON  
SECRETARY OF STATE  
COMMONWEALTH OF KENTUCKY  
BY Karlie Adams

DATE May 30, 2006

## ORDINANCE 06-15

TREY GRAYSON  
SECRETARY OF STATE  
COMMONWEALTH OF KENTUCKY  
BY Janice Adams**AN ORDINANCE OF THE CITY OF RICHMOND, KENTUCKY, ANNEXING 8.836 ACRES OF LAND ADJACENT TO THE CITY LIMITS.**

**WHEREAS**, the owner of record of the unincorporated territory described below would like to have annexed to the incorporated area of the City of Richmond, Kentucky approximately 8.836 acres of land adjacent to the City Limits, and

**WHEREAS**, The City of Richmond the sole owner of land being proposed for annexation has by letter dated February 16, 2006 applied for voluntary annexation.

**WHEREAS**, the proposed annexation meets the requirements of KRS 81A.410, and the owner of record of such land has consented in writing to the annexation pursuant to KRS 81A.412, and

**WHEREAS**, it is declared pursuant to KRS 81A.420 that it is desirable to annex this unincorporated territory and the Richmond Planning and Zoning Commission conducted a Public Hearing pursuant to KRS 100.209 for its recommendation as to zone classifications and any zoning map amendments.

**NOW, THEREFORE BE IT ORDAINED** by the City of Richmond Board of Commissioners that:

**SECTION I****Legal description for 8.836 acres to be annexed and zoned PSP:**

A certain tract of land located on the south side of Tates Creek Road (State Route #169) and lying approximately 1006.89 feet west of the right of way corner post of I-75 on the south side of Tates Creek Road and the west side of I-75 and more particularly described as follows:

Unless otherwise labeled, all corners set this survey are 18" long #4 (1/2") rebar with a plastic cap stamped LS 670. Bearings are based on a magnetic bearing taken in the field between steel pins found in the field labeled ky.dot on 1/20/2006. The following description is based on a survey performed under the direction of Charles E. Black, a duly licensed Land Surveyor in the State of Kentucky, job #7789, for the City of Richmond. Said Survey has an unadjusted error of closure of 1' in 74,964'.

Beginning at the common corner with the Dorman Trust et. al. (deed book 289 page 431 parcel #2) and the City of Richmond Sewer Treatment Plant property (deed book 335 page 328) and also being the south right of way of Tates Creek Road (state route 169), said point being a steel pin and cap set this survey; Thence, with said right of way, 6 calls: S76°07'20"E 152.19' to a steel pin and cap set at the corner of other lands of the City of Richmond, (deed book 345 page 140) said property to be included in this description; Thence, S76°06'37"E 197.69', to a steel pin and cap set; S75°52'47"E 144.64'; Thence, with a curve to the right having a radius of 2834.79'

and arc length of 390.13' along the chord of said curve, S72°26'56"E 389.93' to a steel pin and cap set at the common corner with other lands of the City of Richmond (deed book 345 page 140); Thence, with a curve to the right having a radius of 2834.79' and arc length of 101.27', along the chord of said curve S67°28'59"E 101.26' to a steel pin and cap set, thence, continuing with said curve to the right with a radius of 2834.79' and arc length of 269.50', with the chord of said curve S63°44'10"E 269.40' to a steel pin and cap set at the common corner with the Dorman Trust (deed book 289 page 431). Thence, leaving the south right of way of Tates Creek Road, with the line of the Dorman Trust, S14°06'15"W 195.20' to a steel pin and cap set at a fence corner and common corner with the Dorman Trust; Thence, still with the Dorman Trust, N80°05'05"W 114.33' to a steel pin and cap set in the existing fence line. Thence, still with Dorman, N79°11'04"W 456.27' to a steel pin and cap set, N79°12'07"W 164.16' to a steel pin and cap set, N78°17'36"W 186.07' to a steel pin and cap set, N79°37'00"W 328.60' to a steel pin and cap set; Thence, N14°06'58"E 362.00' to the point of beginning and containing 384,928 feet or 8.8367 acres.

### SECTION II

The Richmond Planning and Zoning Commission conducted a Public Hearing pursuant to KRS 100.209 on March 22, 2006 and recommended the zoning classification of subject property be PSP. The property shall be so zoned in accordance with that recommendation.

### SECTION III

The City Clerk shall cause this Ordinance to be published in accordance with the appropriate Kentucky Revised Statutes.

**Date of First Reading:** May 9, 2006

**Motion By:** Commissioner Barnes

**Seconded By:** Commissioner Jones

<b>Vote:</b>	<b>Yes</b>	<b>No</b>
Commissioner Barnes	X	
Commissioner Blythe	X	
Commissioner Brewer	X	
Commissioner Jones	X	
Mayor Lawson	X	

**Date of Second Reading:** May 23, 2006

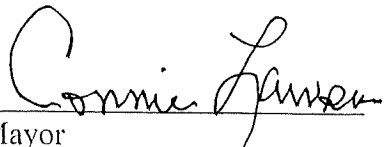
**Motion By:** Commissioner Blythe

**Seconded By:** Commissioner Brewer

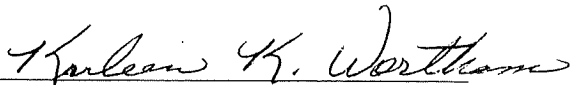
<b>Vote:</b>	<b>Yes</b>	<b>No</b>
Commissioner Barnes		Absent
Commissioner Blythe	X	

Commissioner Brewer  
Commissioner Jones  
Mayor Lawson

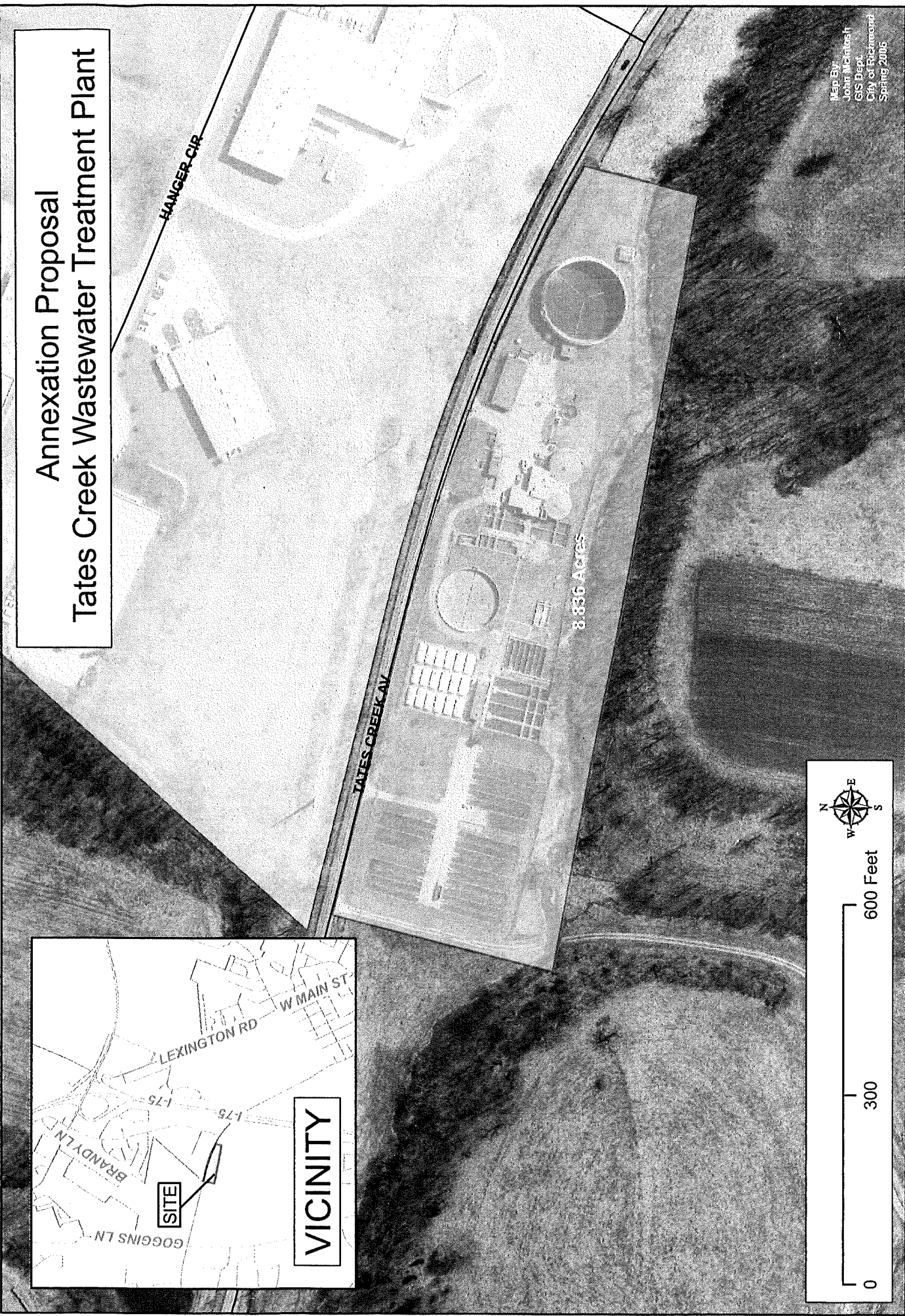
X  
Absent  
X

  
Mayor

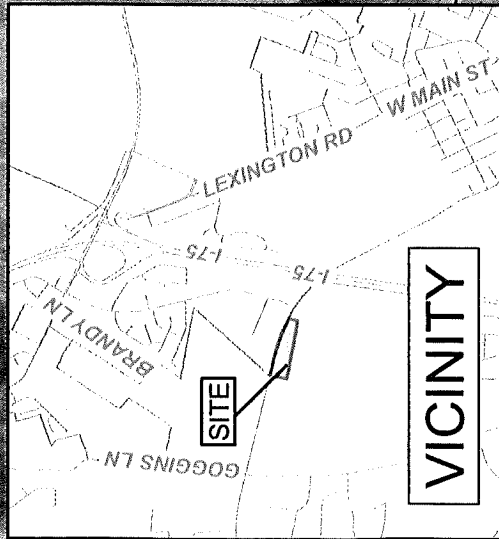
Attest:

  
City Clerk

# Annexation Proposal Tates Creek Wastewater Treatment Plant



Prep By:  
John Mcintosh  
GIS Dept.  
City of Richmond  
Spring 2005



OVERSIZE MAP INCLUDED WITH  
SUBMISSION.

To research the map, contact the  
Office of Secretary of State  
or the County Clerk.