


CERTIFICATE

I, the undersigned, hereby certify that I am the duly qualified and acting City Clerk of the City of Richmond, Kentucky; that the foregoing is a full, true and correct copy of Ordinance 08-09 adopted by the City Commission of said City at a meeting duly held on April 8, 2008; that said official action appears as a matter of public record in the official records or journal of the governing authority; that said meeting was held in accordance with all applicable requirements of Kentucky law, including KRS 61.810, 61.815, 61.820 and 61.825; that a quorum was present at said meeting; that said official action has not been modified, amended, revoked or repealed and is now in full force and effect.

IN TESTIMONY WHEREOF, witness my signature this 14th day of April, 2008.


City Clerk

RECEIVED AND FILED
DATE April 15, 2008

TREY GRAYSON
SECRETARY OF STATE
COMMONWEALTH OF KENTUCKY
BY Jandee Adkinson

ORDINANCE NO. 08-09

AN ORDINANCE OF THE CITY OF RICHMOND, KENTUCKY, ANNEXING APPROXIMATELY 3.88 ACRES OF LAND ADJACENT TO THE CITY LIMITS.

WHEREAS, the owners of record of the unincorporated territory described below would like to have annexed to the incorporated area of the City of Richmond, Kentucky approximately 3.88 acres of land adjacent to the City Limits, and

WHEREAS, Anna and Mike Land the sole owners of the land being proposed for annexation has by letter dated September 18, 2007 applied for voluntary annexation.

WHEREAS, it is the intent of the Richmond City Board of Commissioners to annex this land described below as per annexation procedures established by Ordinance No. 96-17, adopted February 20, 1996.

WHEREAS, the proposed annexation meets the requirement of KRS 81A.410, and the owner of record of such land has consented in writing to the annexation pursuant to KRS 81A.412, and

WHEREAS, it is declared pursuant to KRS 81A.420 that it is desirable to annex this unincorporated territory and the Richmond Planning and Zoning Commission conducted a Public Hearing pursuant to KRS 100.209 for its recommendation as to zone classifications and any zoning map amendments.

NOW, THEREFORE BE IT ORDAINED by the Board of Commissioners of the City of Richmond that:

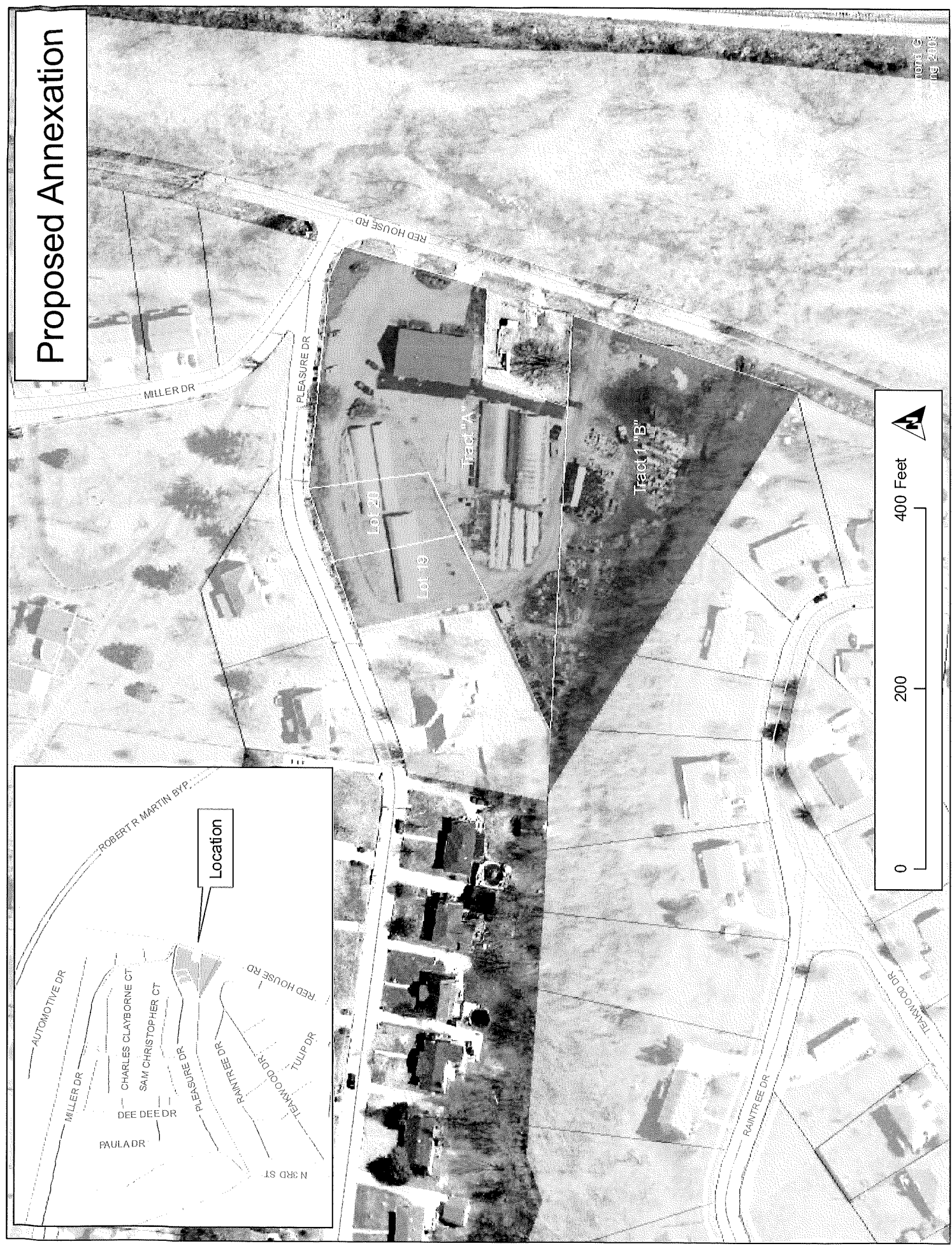
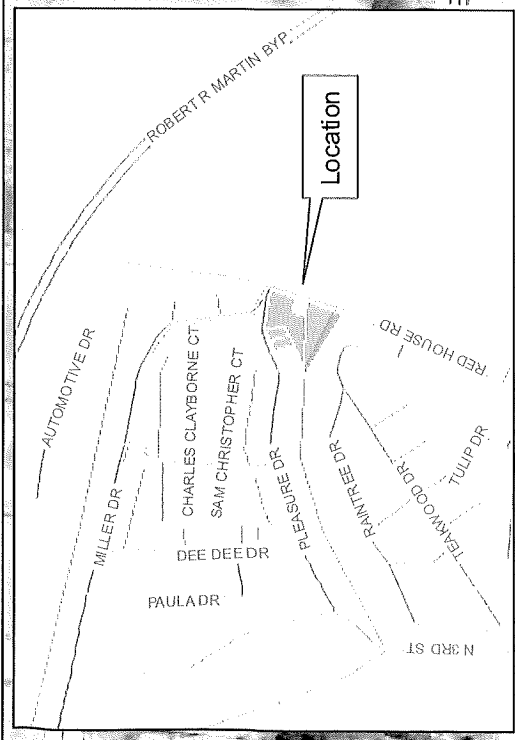
SECTION I

TRACT "A"

Being a parcel of land situated in the State of Kentucky, County of Madison, on State Route 388 and Pleasure Drive being a of portion of the lands of Hillcrest Nursery as recorded in Deed Book 482, Page 86, all references being to the Madison County Clerk's Office, Madison County, Kentucky, and being more particularly described as follows:

Beginning at a point said point being the South East corner and being in the Northern Right-o-Way of State Route 388 at Pleasure Drive; Thence with the Right-of-Way of Ky. Hwy. 388 S19°00'28"W a distance of 163.66 feet to an iron pipe; Thence leaving the Right-of-Way and with Tennessee Gas Transmission Company, N84°42'18"W a distance of 100.63 feet to an iron pin set and marked CMW-TEN #3478; Thence continuing with the Tennessee Gas Transmission Company lands, S19°56'00"W a distance of 99.18 feet to a Iron Pin set labeled CMW TEN #3478; Thence leaving the lands of the Tennessee Gas Transmission Company and with the line of Tract 1B, N84°30'00"W as distance of

Proposed Annexation



OVERSIZE MAP INCLUDED WITH
SUBMISSION.

To research the map, contact the
Office of Secretary of State
or the County Clerk.