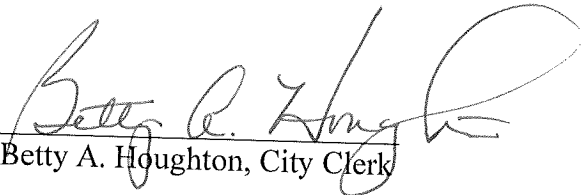


**CERTIFICATE OF CITY CLERK**


I, Betty A. Houghton, hereby certify that I am duly qualified and acting City Clerk of the City of Richmond, Kentucky, and that Ordinance 81-01 is a true and correct copy according to the Legal Books of the City of Richmond. (I was not City Clerk during this timeframe and can only certify that this Ordinance is printed in the City of Richmond's Legal Book). According to the Ordinance Legal Book stored in the city vault, this ordinance was approved and adopted January 20, 1981 at a duly held City Commission meeting in accordance with all applicable requirements of Kentucky law, including KRS 61.810, 61.815, 61.820 and 61.825, that a quorum was present for this meeting and that said ordinance has not been modified, amended, revoked, or repealed and that same is now in full force and effect.

**IN TESTIMONY WHEREOF**, witness my signature as City Clerk and the official Seal of said City this the Oct. 27, 2009.

  
Betty A. Houghton, City Clerk

(Seal of City)

RECEIVED AND FILED  
DATE Oct. 30, 2009

TREY GRAYSON  
SECRETARY OF STATE  
COMMONWEALTH OF KENTUCKY  


ORDINANCE NO. 81-1

AN ORDINANCE OF THE CITY OF RICHMOND, KENTUCKY ANNEXING TO THE CORPORATE LIMITS OF THE CITY OF RICHMOND 15.137 ACRES OF LAND ADJACENT TO THE CITY LIMITS.

WHEREAS, the owners of the unincorporated territory described below would like to have annexed to the corporate limits of the City of Richmond 15.137 acres of land situated on the south side of the Eastern By-Pass adjacent and contiguous to the city limits line and bounded and described as follows:

Beginning at an iron post in the proposed south right of way line of the Eastern By-Pass, a corner to John W. Brandenburg (now in the City), thence leaving said right of way with Brandenburg's line, city limits line, S16°-00'E 689.0 feet, S74°-00'E 408.5 feet to a point in the west line of the Dixie Plaza Mobile Home Park, a corner, thence with the line of the Mobile Home Park, continuing with the City Limits line, S24°-57'W 605.0 feet to an iron post and new corner to John W. Brandenburg, thence a new line with Brandenburg, leaving the city limits line, N65°-03'W 540.3 feet, N16°-00'W 813.85 feet, N0°-16'W 294.15 feet to an iron post in the proposed south right of way line of the Eastern By-Pass, a corner, thence with said south right of way line S86°-41'E 201.3 feet, N80°-33'E 174.4 feet to the beginning containing 15.137 acres.

AND WHEREAS, Ordinance No. 80-47 proposing to annex said tract of land, pursuant to KRS 81.00 et seq. was duly enacted on the 16th day of December, 1980.

NOW, THEREFORE BE IT ORDAINED by the Richmond City Board of Commissioners that:

1. The unincorporated territory described above being adjacent and contiguous to the corporate limits of the City of Richmond, Kentucky is hereby proposed for annexation to the boundaries of the City of Richmond and will be zoned B-4.
2. The Codes Enforcement Officer make the appropriate changes to the official zoning map of the City of Richmond.
3. The City Clerk cause this Ordinance to be published in accordance with the appropriate Kentucky Revised Statutes.

DATE OF FIRST READING January 6, 1981

MOTION BY Commissioner Strong

SECONDED BY Commissioner Lovell

VOTE:	YES	NO
Commissioner Brewer	X	
Commissioner Lawson	X	
Commissioner Lovell	X	
Commissioner Strong	X	
Mayor Todd	X	

DATE OF SECOND READING January 20, 1981

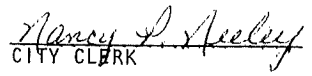
MOTION BY Commissioner Lovell

SECONDED BY Commissioner Brewer

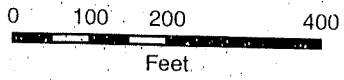
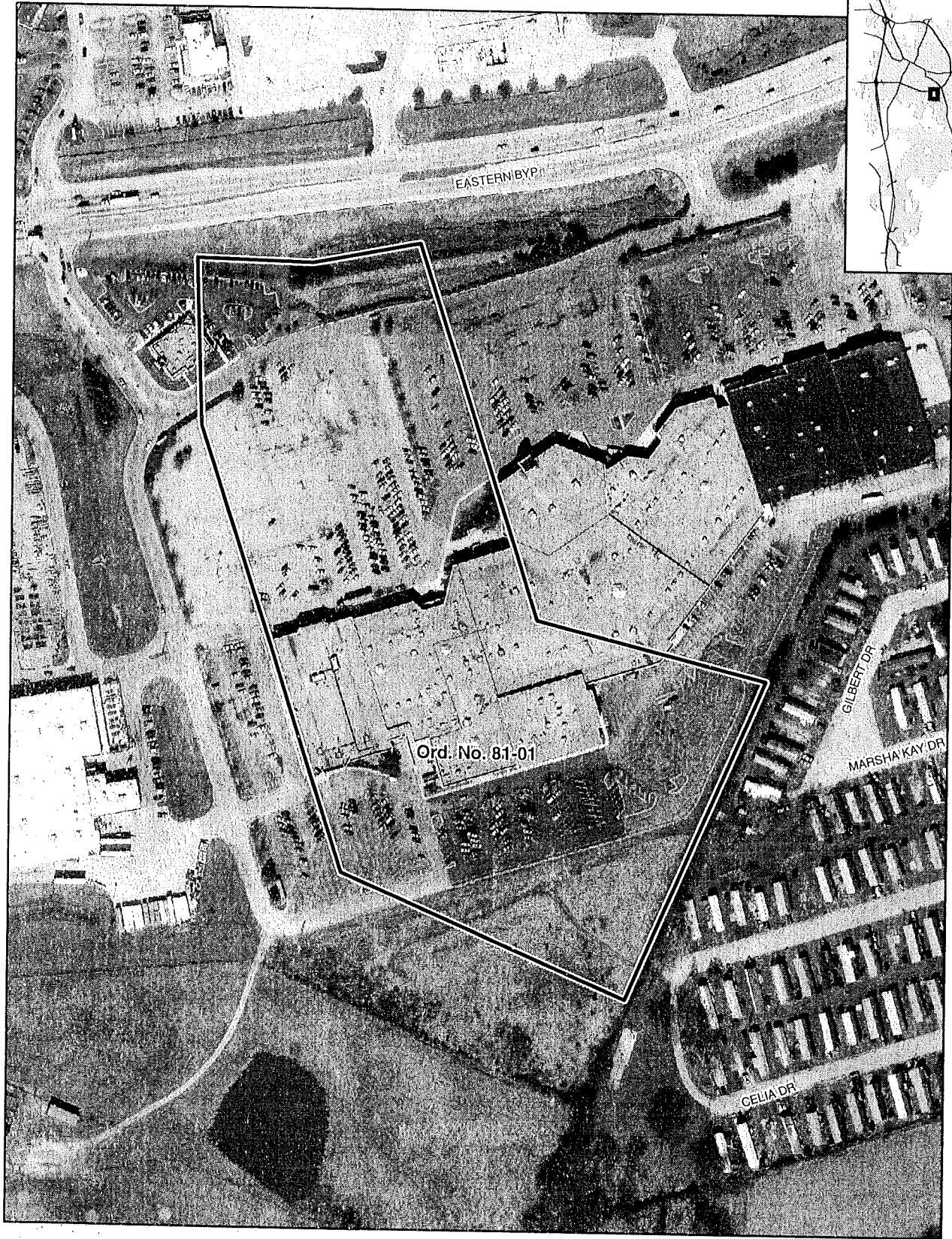
VOTE:	YES	NO
Commissioner Brewer	X	
Commissioner Lawson	X	
Commissioner Lovell	X	
Commissioner Strong	X	
Mayor Todd	X	

  
MAYOR

ATTEST:

  
CITY CLERK

# Annexation Map, Richmond, Kentucky



This map represents approximate annexation boundaries but is not a legal survey.

Richmond GIS  
May 25, 2005

Disclaimer: While the GIS Office strives to maintain accurate data, the City of Richmond does not guarantee its maps or data to be complete, accurate, current, or without error, nor does the City guarantee the fitness of the data for a particular use.

OVERSIZE MAP INCLUDED WITH  
SUBMISSION.

To research the map, contact the  
Office of Secretary of State  
or the County Clerk.