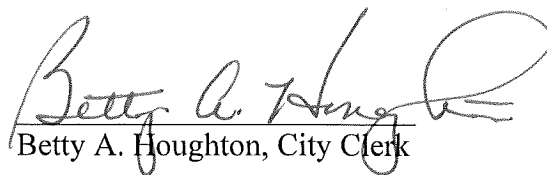


CERTIFICATE OF CITY CLERK

I, Betty A. Houghton, hereby certify that I am duly qualified and acting City Clerk of the City of Richmond, Kentucky, and that Ordinance 82-15 is a true and correct copy according to the Legal Books of the City of Richmond. (I was not City Clerk during this timeframe and can only certify that this Ordinance is printed in the City of Richmond's Legal Book). According to the Ordinance Legal Book stored in the city vault, this ordinance was approved and adopted July 13, 1982 at a duly held City Commission meeting in accordance with all applicable requirements of Kentucky law, including KRS 61.810, 61.815, 61.820 and 61.825, that a quorum was present for this meeting and that said ordinance has not been modified, amended, revoked, or repealed and that same is now in full force and effect.

IN TESTIMONY WHEREOF, witness my signature as City Clerk and the official Seal of said City this the October 27, 2009.


Betty A. Houghton, City Clerk

(Seal of City)

RECEIVED AND FILED
DATE Oct 30, 2009

TREY GRAYSON
SECRETARY OF STATE
COMMONWEALTH OF KENTUCKY
BY Kandie Adkins

ORDINANCE NO. 82-15

AN ORDINANCE OF THE CITY OF RICHMOND, KENTUCKY ANNEXING TO THE CORPORATE LIMITS OF THE CITY OF RICHMOND, KENTUCKY 304 ACRES OF LAND ADJACENT TO THE CITY LIMITS AND U.S. 25 NORTH.

WHEREAS, the owners of the unincorporated territory described below would like to have annexed to the corporate limits of the City of Richmond, Kentucky, three hundred and four (304) acres of land that is adjacent and contiguous to the City and bounded and described as follows:

Tract No. 1 - A certain tract of land situated on the west side of Interstate Highway 75 and the south side of U.S. Highway 25 and the North side of Kentucky Highway 169 in Madison County, Kentucky on the headwaters of Tates Creek, bounded and described by survey made by B.H. Luxon, III, Civil Engineers, as follows:

Beginning at an iron post at the intersection of the north line of Kentucky Highway 169 with the west line of Interstate Highway 75, thence N51° - 54'W 612.11 feet, N56° - 28'W 421.30 feet, N 64° - 52'W 407.50 feet, N72° - 09'W 340.30 feet, N74° - 06'W 470.40 feet to a corner post and corner to W. Arnold Hanger, thence with Hanger's line N44° - 29'E 1065.34 feet, N43° - 50'E 288.68 feet, N43° - 10'E 228.90 feet, N43° - 55'E 338.30 feet, N43° - 41'E 192.60 feet to a corner post and corner, thence continuing with Hanger's line N77° - 21'W 597.18 feet, N76° - 59'W 904.55 feet to a corner post and corner to B.H. Luxon, thence with Luxon's line N35° - 31'E 1718.36 feet, N35° - 41'E 1231.68 feet to a point in the center of U.S. Highway 25 and corner, thence with the center line of U.S. Highway 25 S61° - 30'E 248.00 feet to a point and corner, thence S28° - 30'W 96.00 feet to an iron post in the south line of U.S. Highway 25 and corner, thence with the south line of U.S. Highway 25 S61° - 30'E 179.07 feet, S47° - 29'E 95.47 feet to an iron post at the intersection of the south line of U.S. Highway 25 with the west line of Interstate Highway 75, thence with the west line of Interstate Highway 75 through a curve the radius of which is 66 feet and whose chord is S1° - 58'E 84.18 feet, thence continuing with said west line S43° - 34'W 129.22 feet, thence continuing with said west line through a curve the radius of which is 414 feet and whose chord is S7° - 34'W 498.30 feet, thence continuing with said west line S30° - 26'E 883.95 feet, thence continuing with said west line through a curve the radius of which is 632.20 feet and whose chord is S9° - 56'E 442.80 feet, thence continuing with said west line S9° - 25'W 1050.00 feet, S10° - 34'W 2059.44 feet to the beginning containing 161.33 acres.

Tract No. 2 - A certain tract of land situated on the north side of U.S. Highway 25 and the west side of Interstate Highway 75 in Madison County, Kentucky, bounded and described by the aforementioned survey as follows:

Beginning at a point at the intersection of the center line of U.S. Highway 25 with the west line of Interstate Highway 75, thence with the center line of U.S. Highway 25 N61° - 30'W 698.00 feet to a point in the center of U.S. Highway 25, an iron post in the north line thereof and corner to the Board of Education of Madison County, thence with the line of the Board of Education of Madison County N31° - 06'E 665.00 feet to an iron post and corner, thence continuing with the line of the Board of Education of Madison County N61° - 50'W 629.90 feet to an iron post and corner, thence continuing with the line of the Board of Education of Madison County S28° - 10'W 665.00 feet to a point in

the center of U.S. Highway 25, an iron post in the north line thereof, and corner, thence with the center line of U.S. Highway 25 N61° - 59'W 311.85 feet, N60° - 59'W 430.95 feet, N46° - 43'W 112.65 feet, N38° - 32'W 45.00 feet, N34° - 37'W 36.14 feet, N28° - 07'W 78.15 feet, N21° - 12'W 90.95 feet, N19° - 22'W 610.30 feet to a point in the center of U.S. Highway 25 and corner to Eldridge Carrier, thence with Carrier's line and the line of Neville Cotton N23° - 29'E 1177.08 feet, thence with Cotton's line and the line of Ted Lake N24° - 23'E 1922.70 feet to an iron post in the west right of way line of Interstate Highway 75 and corner, thence with said right of way line S19° - 32'E 1646.22 feet to an iron post and corner, thence continuing with said right of way line S70° - 28'W 50.00 feet to an iron post and corner, thence continuing with said right of way line S19° - 32'E 450.00 feet to an iron post and corner, thence continuing with said right of way line N70° - 28'E 50.00 feet to an iron post and corner, thence continuing with said right of way line S19° - 32'E 2150.00 feet, S15° - 32'E 119.08 feet, thence continuing with said right of way line through a curve the radius of which is 1825.86 feet and whose chord is S7° - 52'E 487.18 feet, thence continuing with said right of way line through a curve the radius of which is 632.20 feet and whose chord is S7° - 11'W 378.11 feet, thence continuing with said right of way line S7° - 11'W 12.71 feet to an iron post and corner, thence continuing with said right of way line through a curve the radius of which is 1482.39 feet and whose chord is N48° - 16'W 341.63 feet, thence continuing with said right of way line N61° - 30'W 196.44 feet to an iron post and corner, thence continuing with said right of way line S28° - 30'W 50.00 feet to the beginning containing 143.33 acres.

Being the same property conveyed to Thomas C. Harper, Allen D. Grant, and Thomas R. Goebel, three of the Mortgagors, herein, by Citizens Fidelity Bank and Trust Company, Trustee, by deed dated September 30, 1981, which deed is of record in the Office of the Madison County Court Clerk in Deed Book No. 339, page 220.

NOW, THEREFORE BE IT ORDAINED by the Richmond City Board of Commissioners that:

1. The unincorporated territory described above adjacent and contiguous to the corporate limits of the City of Richmond, Kentucky is hereby annexed to the boundaries of the City of Richmond, and would be zoned R-1-A.
2. If this Ordinance be enacted, the City Clerk is ordered to publish this Ordinance pursuant to K.R.S. 81.100 and Chapter 424 of K.R.S.

DATE OF FIRST READING JULY 6, 1982

MOTION BY COMMISSIONER BREWER

SECONDED BY COMMISSIONER JONES

VOTE:	YES	NO
COMMISSIONER BREWER	X	
COMMISSIONER JONES	X	
COMMISSIONER LOVELL	X	
COMMISSIONER PARSONS		X
MAYOR STRONG	X	

DATE OF SECOND READING JULY 13, 1982

MOTION BY COMMISSIONER BREWER

SECONDED BY COMMISSIONER JONES

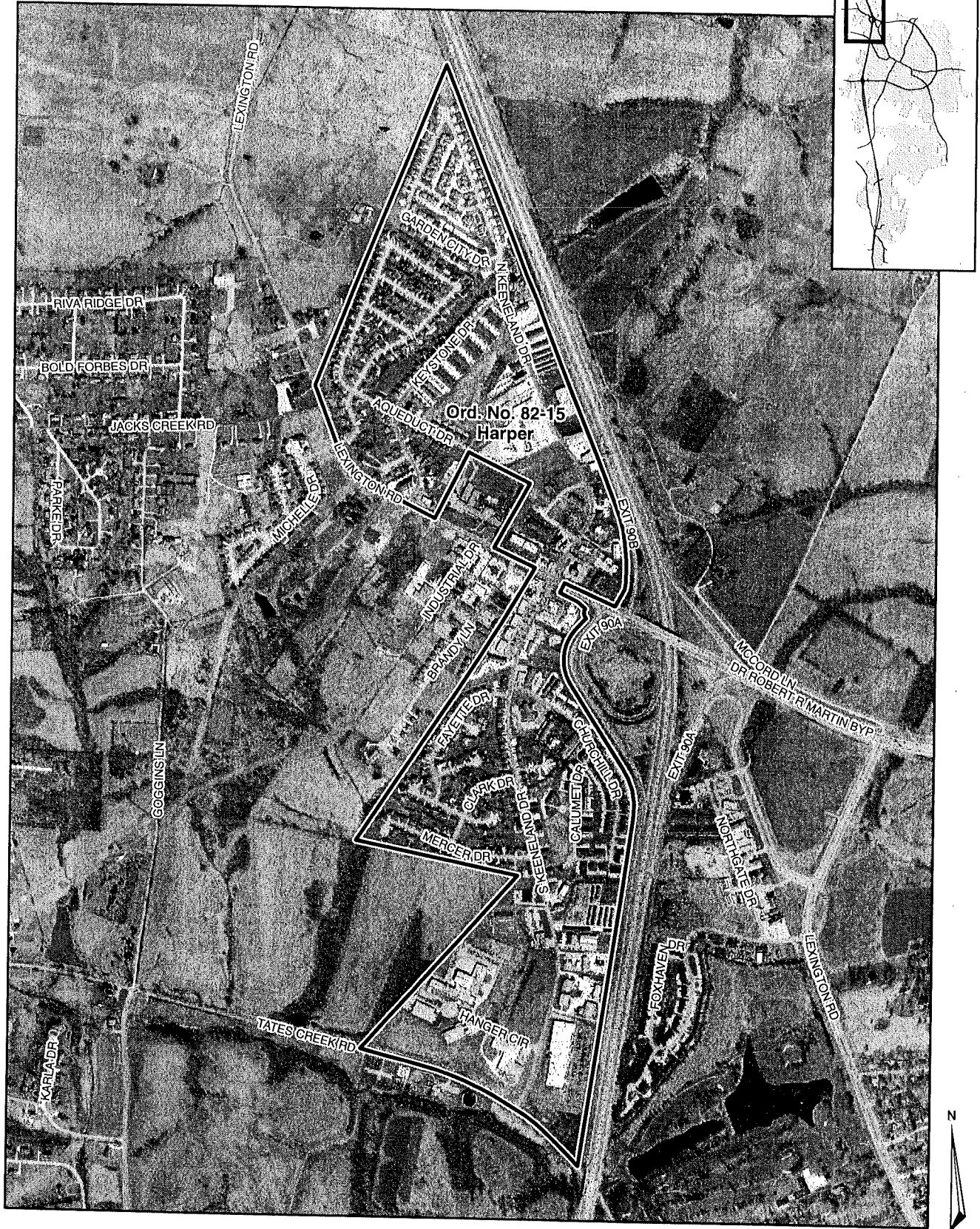
VOTE:	YES	NO
COMMISSIONER BREWER	X	
COMMISSIONER JONES	X	
COMMISSIONER LOVELL	ABSENT	
COMMISSIONER PARSONS	ABSENT	
MAYOR STRONG	X	

William H. Strong
MAYOR

ATTEST:

Susan E. Higgins
CITY CLERK

Annexation Map, Richmond, Kentucky



0 500 1,000 2,000
Feet

This map represents approximate annexation boundaries but is not a legal survey.

Richmond GIS
May 25, 2005

Disclaimer: While the GIS Office strives to maintain accurate data, the City of Richmond does not guarantee its maps or data to be complete, accurate, current, or without error, nor does the City guarantee the fitness of the data for a particular use.

OVERSIZE MAP INCLUDED WITH
SUBMISSION.

To research the map, contact the
Office of Secretary of State
or the County Clerk.