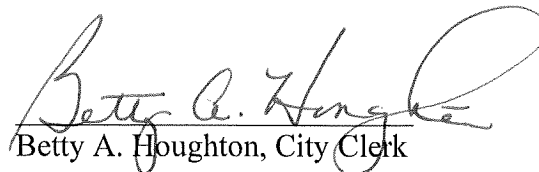


**CERTIFICATE OF CITY CLERK**

I, Betty A. Houghton, hereby certify that I am duly qualified and acting City Clerk of the City of Richmond, Kentucky, and that Ordinance 86-06 is a true and correct copy according to the Legal Books of the City of Richmond. (I was not City Clerk during this timeframe and can only certify that this Ordinance is printed in the City of Richmond's Legal Book). According to the Ordinance Legal Book stored in the city vault, this ordinance was approved and adopted March 4, 1986 at a duly held City Commission meeting in accordance with all applicable requirements of Kentucky law, including KRS 61.810, 61.815, 61.820 and 61.825, that a quorum was present for this meeting and that said ordinance has not been modified, amended, revoked, or repealed and that same is now in full force and effect.

**IN TESTIMONY WHEREOF**, witness my signature as City Clerk and the official Seal of said City this the October 27, 2009.

  
Betty A. Houghton, City Clerk

(Seal of City)

RECEIVED AND FILED  
DATE Oct. 30, 2009  
\_\_\_\_\_  
TREY GRAYSON  
SECRETARY OF STATE  
COMMONWEALTH OF KENTUCKY  
BY Kandice Adkins

ORDINANCE NO. 86-06

AN ORDINANCE OF THE CITY OF RICHMOND, KENTUCKY ANNEXING TO THE CORPORATE LIMITS OF THE CITY OF RICHMOND 8.449 ACRES OF LAND ADJACENT TO THE CITY LIMITS AND THE SOUTH SIDE OF THE EASTERN BY-PASS.

WHEREAS, the owners of the unincorporated territory described below would like to have annexed to the corporate limits of the City of Richmond, Kentucky 8.449 acres of land situated on the south side of the Eastern By-Pass adjacent and contiguous to the City limits and bounded and described as follows:

A certain tract of land situated on the South side of the Eastern By-Pass in Madison County, Kentucky consisting of 8.449 acres as shown by Plat thereof recorded in Plat Book 7 at Page 348, Madison County Court Clerk's Office in Richmond, Kentucky and bounded and described as follows:

Beginning at an iron post in the south right-of-way line of the Eastern By-Pass, a corner to the property of R.M. Partnership, thence leaving said right-of-way line with the line of R.M. Partnership, said line being the existing city limits line of the City of Richmond, Kentucky, S0° -16'E 294.15 feet, S16°-00'E 813.85 feet, S65° -03'E 540.3 feet to a steel post and corner to Dixie Plaza Mobile Home park, thence with the line of the Mobile Home Park, continuing with the existing city limits line, S24° -57'W 200.0 feet, to a steel post and new corner to John W. Brandenburg, thence leaving the city limits line a new line with Brandenburg, N65° -03'W 632.8 feet, N16° - 00'W 933.5 feet, N14° -51'W 325.16 feet to a steel post in the south right-of-way line of the Eastern By-Pass, a corner, thence with said right-of-way line N86° - 11'E 181.0 feet, S86° -41'E 102.75 feet to the beginning containing 8.449 acres, and

WHEREAS, Ordinance No. 86-03 proposing to annex said tract of land, pursuant to KRS 81A.410, 81A.420 and Chapter 424 of KRS was duly enacted on the 4th days of February, 1986.

NOW, THEREFORE BE IT ORDINANED by the Richmond City Board of Commissioners of the City Richmond that;

1. The unincorporated territory described above being adjacent and contiguous to the corporate limits of the City of Richmond, Kentucky, is hereby annexed to the boundaries of the City of Richmond, and is zoned B-4.

2. The Codes Enforcement Officer make the appropriate changes to the Official Zoning Map of the City of Richmond.

3. The City Clerk cause this Ordinance to be published in accordance with the appropriate Kentucky Revised Statutes.

DATE OF FIRST READING February 18, 1986 DATE OF SECOND READING March 4, 1986

MOTION BY Commissioner McWhorter MOTION BY Commissioner Todd

SECONDED BY Commissioner McAninch SECONDED BY Commissioner McAninch

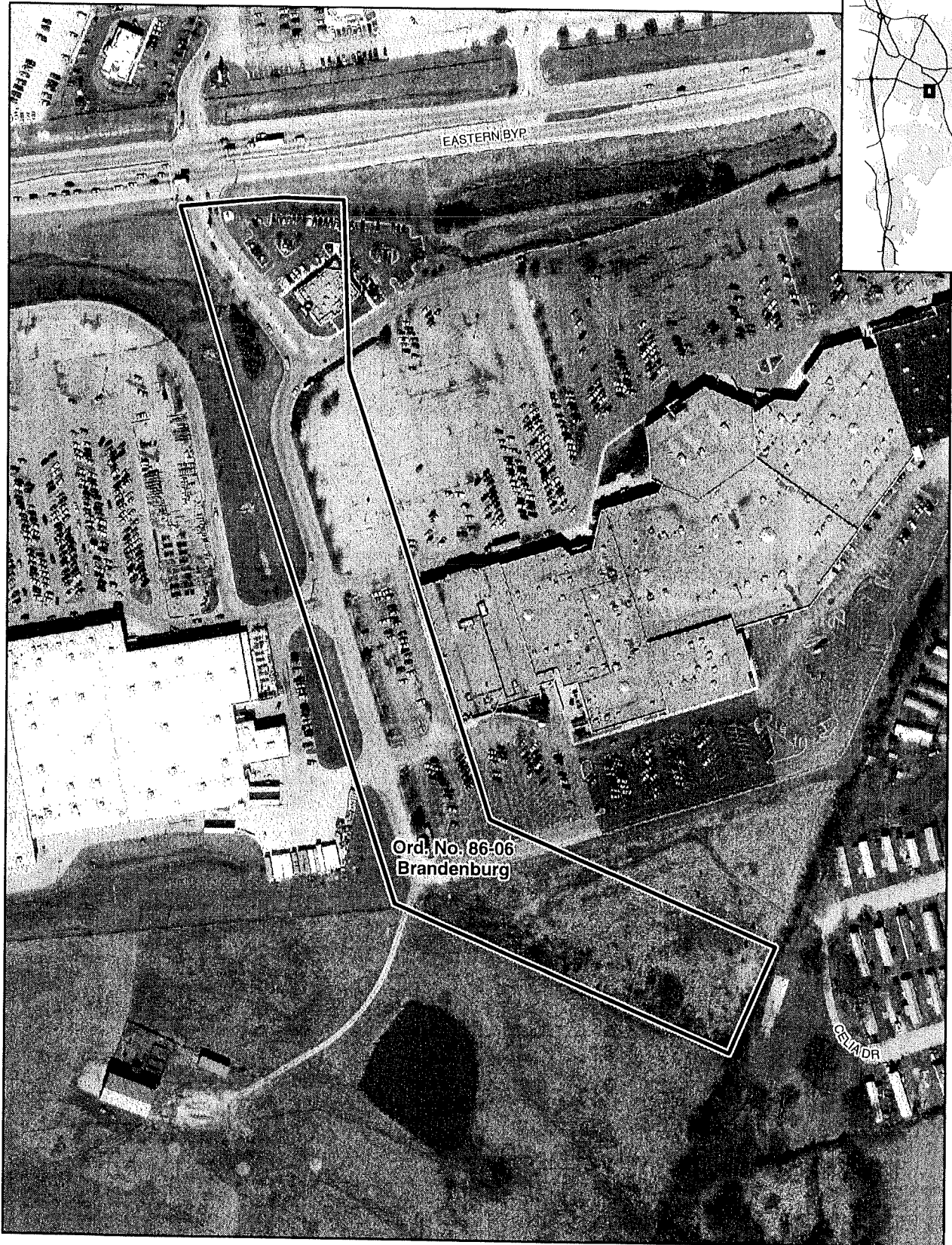
VOTE:		YES	NO	VOTE:		YES	NO
Commissioner Ballou			absent	Commissioner Ballou			absent
Commissioner McAninch	x			Commissioner McAninch	x		
Commissioner McWhorter	x			Commissioner McWhorter	x		
Commissioner Todd	x			Commissioner Todd	x		
Mayor Baker	x			Mayor Baker	x		

Earl B. Baker  
MAYOR

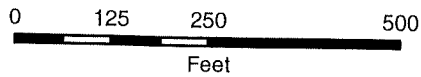
ATTEST:

Susan E. Higgers  
City Clerk

# Annexation Map, Richmond, Kentucky



Ord. No. 86-06  
Brandenburg



This map represents approximate annexation boundaries but is not a legal survey.

Richmond GIS  
May 25, 2005

Disclaimer: While the GIS Office strives to maintain accurate data, the City of Richmond does not guarantee its maps or data to be complete, accurate, current, or without error, nor does the City guarantee the fitness of the data for a particular use.

OVERSIZE MAP INCLUDED WITH  
SUBMISSION.

To research the map, contact the  
Office of Secretary of State  
or the County Clerk.