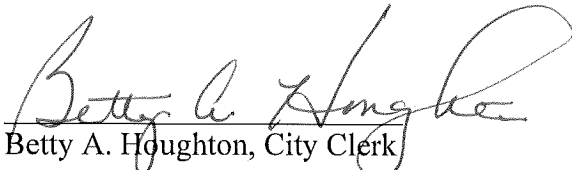


CERTIFICATE OF CITY CLERK

I, Betty A. Houghton, hereby certify that I am duly qualified and acting City Clerk of the City of Richmond, Kentucky, and that Ordinance 87-24 is a true and correct copy according to the Legal Books of the City of Richmond. (I was not City Clerk during this timeframe and can only certify that this Ordinance is printed in the City of Richmond's Legal Book). According to the Ordinance Legal Book stored in the city vault, this ordinance was approved and adopted July 7, 1987 at a duly held City Commission meeting in accordance with all applicable requirements of Kentucky law, including KRS 61.810, 61.815, 61.820 and 61.825, that a quorum was present for this meeting and that said ordinance has not been modified, amended, revoked, or repealed and that same is now in full force and effect.

IN TESTIMONY WHEREOF, witness my signature as City Clerk and the official Seal of said City this the October 27, 2009.


Betty A. Houghton, City Clerk

(Seal of City)

RECEIVED AND FILED
DATE Oct. 30, 2009

TREY GRAYSON
SECRETARY OF STATE
COMMONWEALTH OF KENTUCKY
BY Randie Adkins

ORDINANCE NO. 87-24

AN ORDINANCE OF THE CITY OF RICHMOND, KENTUCKY ANNEXING TO THE CORPORATE LIMITS OF THE CITY OF RICHMOND 12 ACRES OF LAND ADJACENT TO THE CITY LIMITS AND ON THE EAST SIDE OF THE EASTERN BY PASS AND NORTH SIDE OF SOUTHERN HILLS SUBDIVISION.

WHEREAS, the owner of the unincorporated territory described below would like to have annexed to the corporate limits of the City of Richmond, Kentucky, 12 acres of land adjacent to the City Limits and on the East side of the Eastern By-Pass and north side of Southern Hills Subdivision adjacent and contiguous to the City Limits and bounded and described as follows:

A certain tract of land situated on the East side of the Eastern By-Pass and on the north side of Southern Hills Subdivision in Madison County, Kentucky, to-wit:

Beginning at the north-east corner of Lot 2 of Southern Hills Subdivision as described in Plat Book 4, at page 84. Madison County Clerk's Office and corner with the property of James J. Shannon, Jr.; thence in a straight line in an easterly direction a distance of approximately 1075 feet to a corner with Earl Cornelson and James J. Shannon, Jr.; thence with the line fence of Earl Cornelson N 5 1/4 degrees East 651.75 feet to another corner with James J. Shannon, Jr.; thence with the dence line N 89 3/4 degrees west 1055.64 feet to a corner with National Guard Army and EKV By Pass thence in a straight line with the existing City Limits of the City of Richmond, Kentucky as shown on the Richmond Zoning Map a distance of approximately 1375 feet to the northeast corner of Lot 2, Southern Hills Subdivision and point of beginning and containing 12 acres, more or less.

WHEREAS, Ordinance No. 86-16 declaring intent to annex said tract of land, pursuant to KRS 81A.410, 81A.420 and Chapter 424 of KRS was duly enacted on the 2nd day of June 1987.

NOW, THEREFORE BE IT ORDAINED by the Board of Commissioners of the City of Richmond, that

1. The unincorporated territory described above being adjacent and contiguous to the corporate limits of the City of Richmond, Kentucky, is hereby annexed to the boundaries of the City of Richmond, and is zoned B-3.
2. The Codes Enforcement Officer make the appropriate changes to the Official Zoning Map of the City of Richmond.
3. The City Clerk cause this Ordinance to be published in accordance with the appropriate Kentucky Revised Statutes.

DATE OF FIRST READING June 16, 1987

MOTION BY Commissioner Todd

SECONDED BY Commissioner McAninch

| VOTE: | YES | NO |
|------------------------|-----|----|
| Commissioner Ballou | x | |
| Commissioner McAninch | x | |
| Commissioner McWhorter | x | |
| Commissioner Todd | x | |
| Mayor Baker | x | |

DATE OF SECOND READING July 7, 1987

MOTION BY Commissioner Todd

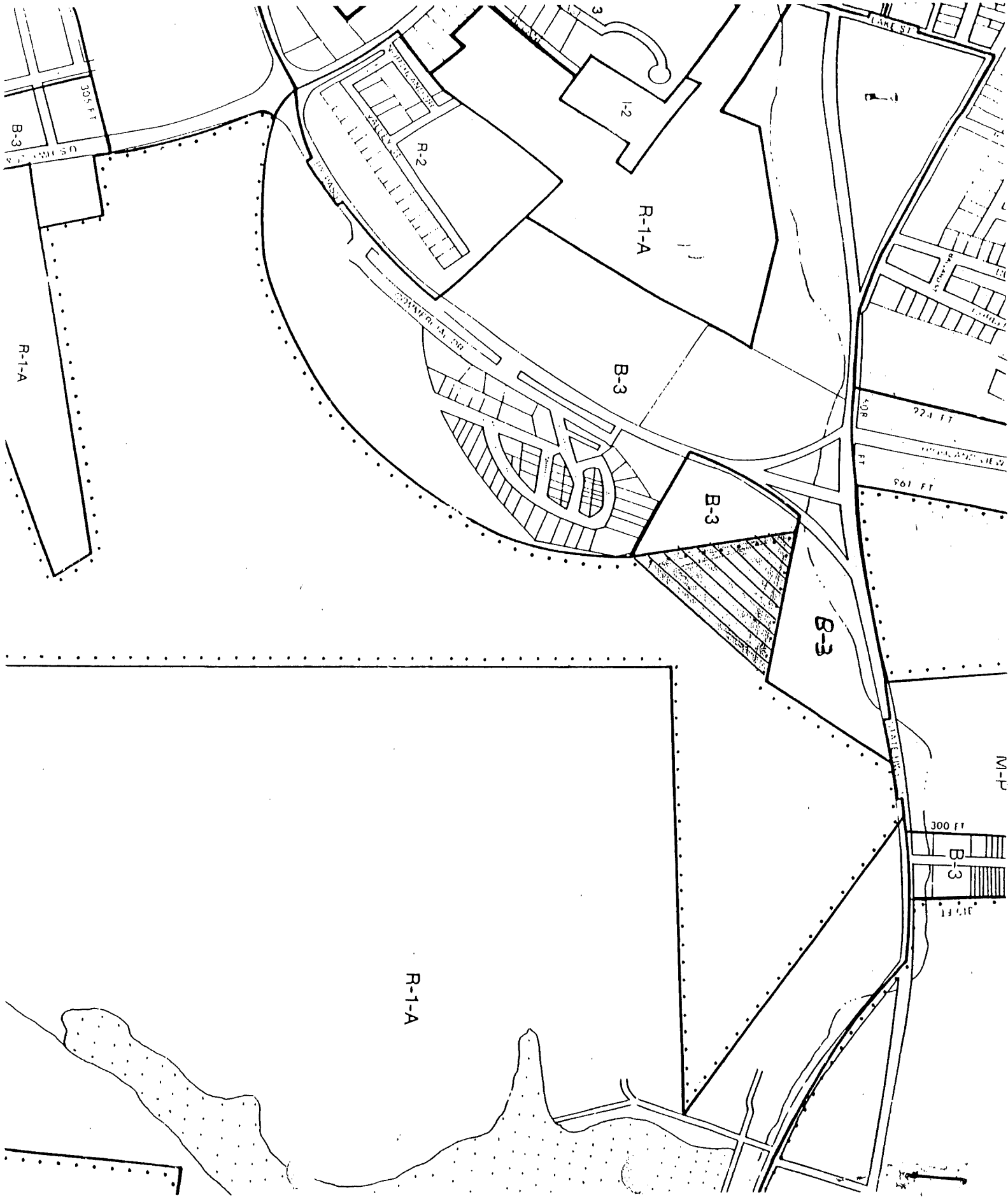
SECONDED BY Commissioner McAninch

| VOTE: | YES | NO |
|------------------------|-----|----|
| Commissioner Ballou | x | |
| Commissioner McAninch | x | |
| Commissioner McWhorter | x | |
| Commissioner Todd | x | |
| Mayor Baker | x | |

Earl B. Baker
Mayor

Attest:

Susan E. Higgins
City Clerk



B-3

R-1-A

305 FT

U.S. HWY. 2

R-2

I-2

R-1-A

LAKE ST

B-3

B-3

B-3

408 FT

224 FT

561 FT

WEST WINDY ST

300 FT

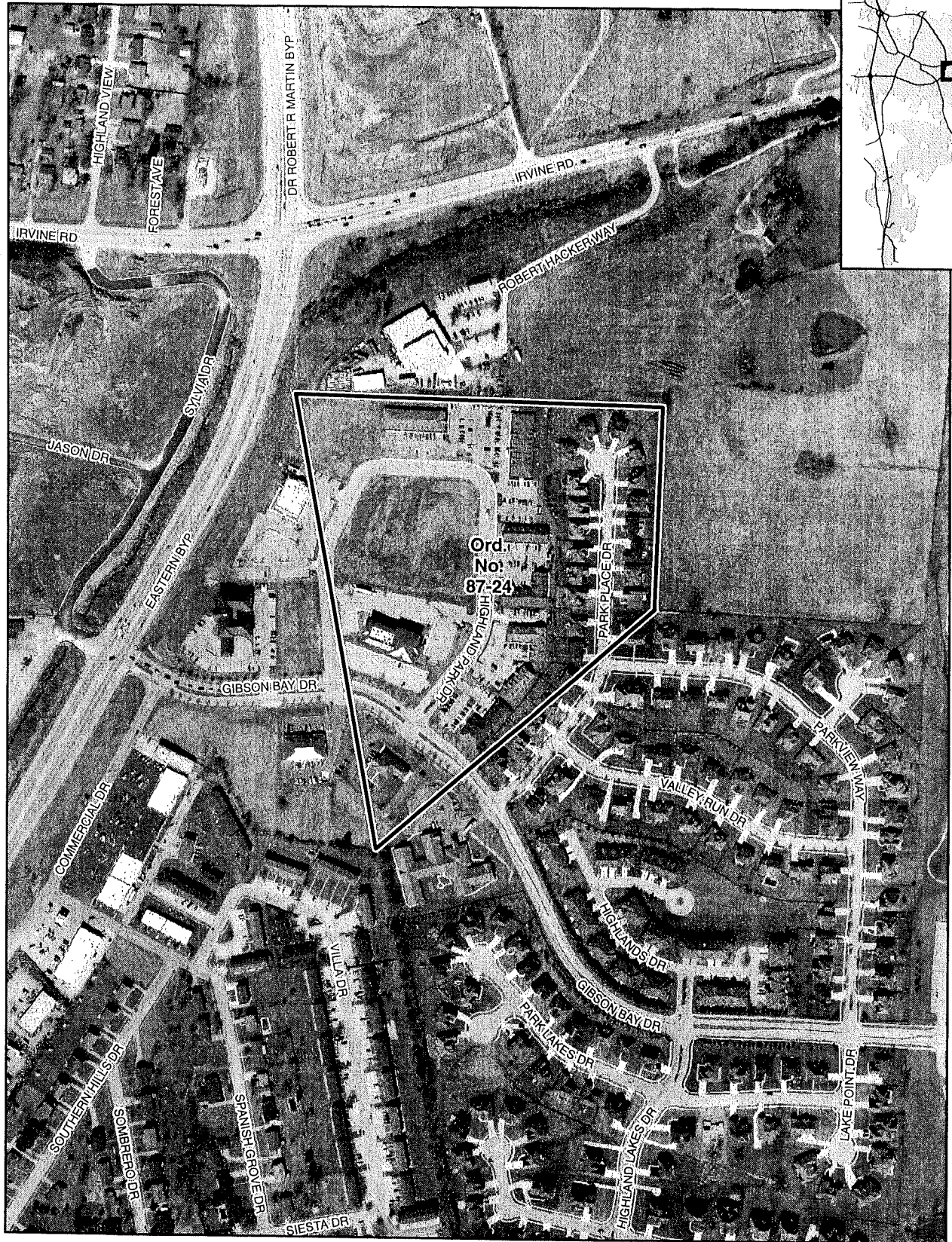
315 FT

M-H

R-1-A



Annexation Map, Richmond, Kentucky



0 125 250 500
Feet

This map represents approximate annexation boundaries but is not a legal survey.

Richmond GIS
May 25, 2005

Disclaimer: While the GIS Office strives to maintain accurate data, the City of Richmond does not guarantee its maps or data to be complete, accurate, current, or without error, nor does the City guarantee the fitness of the data for a particular use.

OVERSIZE MAP INCLUDED WITH
SUBMISSION.

To research the map, contact the
Office of Secretary of State
or the County Clerk.