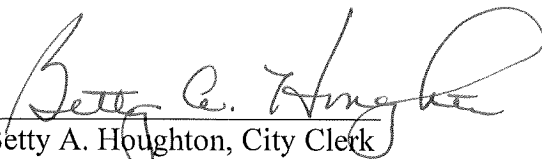


CERTIFICATE OF CITY CLERK

I, Betty A. Houghton, hereby certify that I am duly qualified and acting City Clerk of the City of Richmond, Kentucky, and that Ordinance 87-38 is a true and correct copy according to the Legal Books of the City of Richmond. (I was not City Clerk during this timeframe and can only certify that this Ordinance is printed in the City of Richmond's Legal Book). According to the Ordinance Legal Book stored in the city vault, this ordinance was approved and adopted November 17, 1987 at a duly held City Commission meeting in accordance with all applicable requirements of Kentucky law, including KRS 61.810, 61.815, 61.820 and 61.825, that a quorum was present for this meeting and that said ordinance has not been modified, amended, revoked, or repealed and that same is now in full force and effect.

IN TESTIMONY WHEREOF, witness my signature as City Clerk and the official Seal of said City this the October 27, 2009.


Betty A. Houghton, City Clerk

(Seal of City)

RECEIVED AND FILED
DATE Oct. 30, 2009

TREY GRAYSON
SECRETARY OF STATE
COMMONWEALTH OF KENTUCKY
BY Kardie Adkinson

ORDINANCE NO. 87-38

AN ORDINANCE OF THE CITY OF RICHMOND, KENTUCKY ANNEXING TO THE CORPORATE LIMITS OF RICHMOND 2.25 ACRES OF LAND ADJACENT TO THE CITY LIMITS.

WHEREAS, The owner of the unincorporated territory described below would like to be annexed to the corporate limits of the City of Richmond, Kentucky land that is adjacent to and contiguous with the City and bounded and described as follows:

Beginning at a point in the west right-of-way line of U.S. Highway #25 & 421 (Big Hill Avenue) said point being 100 feet south of the southeast corner of Lowe's lot, thence leaving said right-of-way line with the existing south city limits line S74°-00'-00"W 286± feet to an iron pin and corner to the Caperton Heirs, thence with the Caperton Heirs S10°-14'-30"E 106.43 feet to a post and corner to the Morele Properties, thence with the Morele Properties S13°-47'-19"E 239.46 feet, N76°-14'-13"E 279.52 feet to a post in the west right-of-way line of U.S. Highway #25 and #421, thence with the said right-of-way line N12°-51'-42"W 356.58 feet to the beginning containing 2.25 acres, and

WHEREAS, Ordinance No. 87-34 declaring intent to annex said tract of land, pursuant to KRS 81A.410, 81A-420 and Chapter 424 of KRS was duly enacted on the 6th day of October, 1987.

NOW, THEREFORE BE IT ORDAINED AND ENACTED by the Richmond City Board of Commissioners that:

1. The unincorporate territory described above being adjacent to and contiguous with the corporate limits of the City of Richmond, Kentucky, is hereby annexed to the boundaries of the City of Richmond, and is zoned B-3.
2. The Codes Enforcement officer make the appropriate change to the official Zoning Map of the City of Richmond.
3. That the City Clerk cause this Ordinance to be published in accordance with the appropriate Kentucky Revised Statutes.

DATE OF FIRST READING October 20, 1987

MOTION BY Commissioner Todd

SECONDED BY Commissioner McAninch

VOTE:	YES	NO
Commissioner Ballou	x	
Commissioner McAninch	x	
Commissioner McWhorter	x	
Commissioner Todd	x	
Mayor Baker	x	

DATE OF SECOND READING November 17, 1987

MOTION BY Commissioner Todd

SECONDED BY Commissioner McWhorter

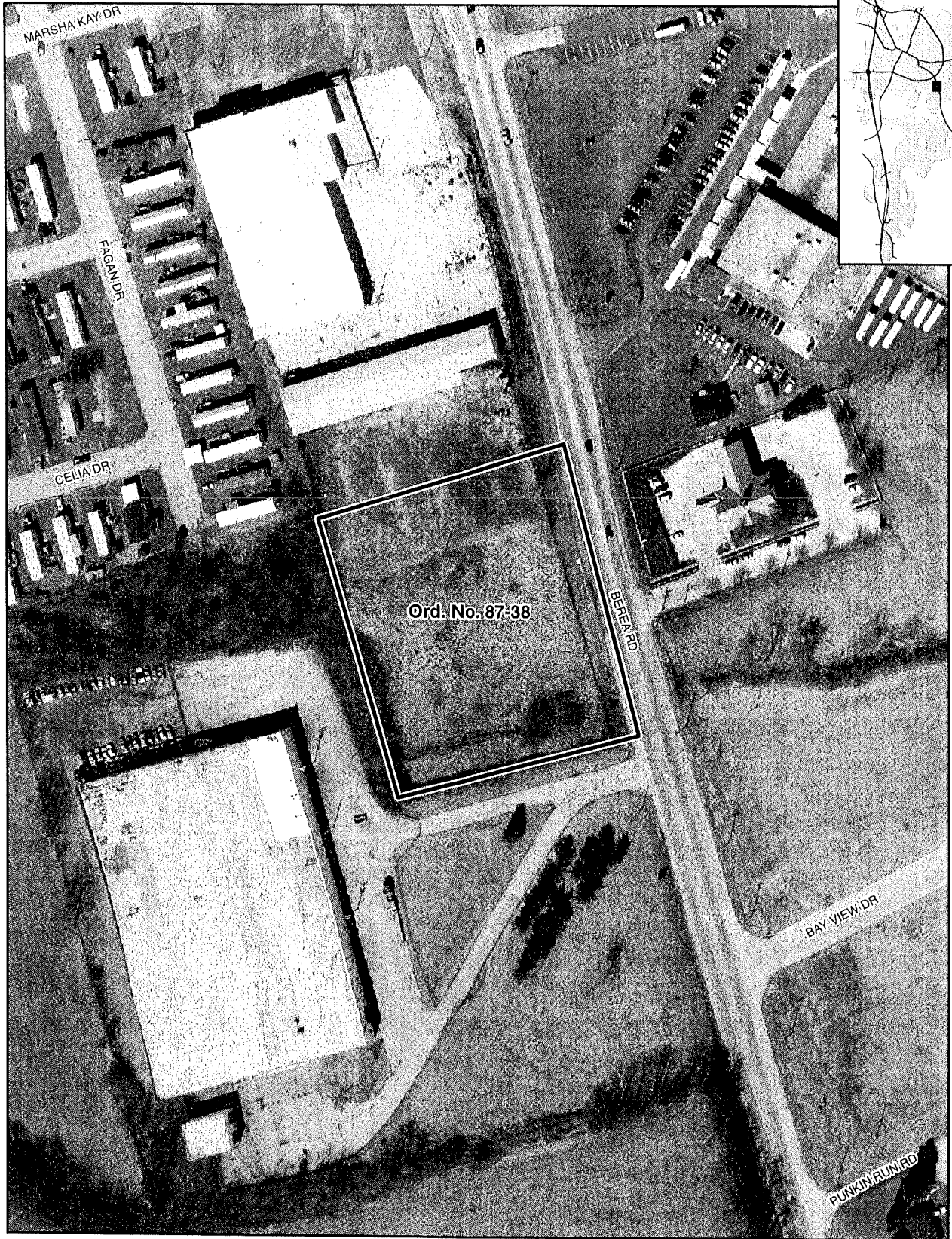
VOTE:	YES	NO
Commissioner Ballou	x	
Commissioner McAninch	x	
Commissioner McWhorter	x	
Commissioner Todd	x	
Mayor Baker	x	

Earl B. Baker
Mayor

Attest:

Susan E. Higgins
City Clerk

Annexation Map, Richmond, Kentucky



0 50 100 200
Feet

This map represents approximate annexation boundaries but is not a legal survey.

Richmond GIS
May 25, 2005

Disclaimer: While the GIS Office strives to maintain accurate data, the City of Richmond does not guarantee its maps or data to be complete, accurate, current, or without error, nor does the City guarantee the fitness of the data for a particular use.