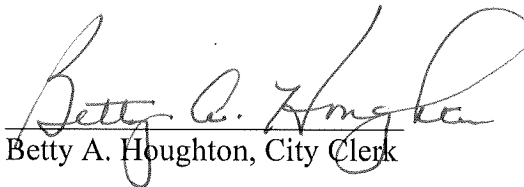


CERTIFICATE OF CITY CLERK

I, Betty A. Houghton, hereby certify that I am duly qualified and acting City Clerk of the City of Richmond, Kentucky, and that Ordinance 87-41 is a true and correct copy according to the Legal Books of the City of Richmond. (I was not City Clerk during this timeframe and can only certify that this Ordinance is printed in the City of Richmond's Legal Book). According to the Ordinance Legal Book stored in the city vault, this ordinance was approved and adopted December 15, 1987 at a duly held City Commission meeting in accordance with all applicable requirements of Kentucky law, including KRS 61.810, 61.815, 61.820 and 61.825, that a quorum was present for this meeting and that said ordinance has not been modified, amended, revoked, or repealed and that same is now in full force and effect.

IN TESTIMONY WHEREOF, witness my signature as City Clerk and the official Seal of said City this the October 27, 2009.


Betty A. Houghton, City Clerk

(Seal of City)

RECEIVED AND FILED
DATE Oct. 30, 2009

TREY GRAYSON
SECRETARY OF STATE
COMMONWEALTH OF KENTUCKY
BY Kandie Adams

AN ORDINANCE OF THE CITY OF RICHMOND, KENTUCKY ANNEXING TO THE CORPORATE LIMITS OF THE CITY OF RICHMOND 3.34 ACRES OF LAND ADJACENT TO THE CITY LIMITS AND ON THE EAST SIDE OF BIG HILL ROAD.

WHEREAS, the owner of the unincorporated territory described below would like to have annexed to the corporate limits of the City of Richmond, Kentucky, 3.34 acres of land adjacent to the City Limits and on the East side of Big Hill Road adjacent and contiguous to the City Limits and bounded and described as follows:

Beginning at a post in the east right-of-way line of U.S. Highway #25 & #421, a corner to Moore Middle School, thence leaving said highway with the line of Moore middle School, said line being the south city limits line of Richmond, Kentucky, N 73°-00'-00" E 486.85 feet to a post and new corner to Mrs. James Asbell, thence a new line with Asbell's 14°-03'-00" E 304.2 feet to an iron pin and new corner with Asbell, thence continuing a new line with Asbell, S 73°-00'-00" W 336.55 feet, S 84°-23'-00" W 71.2 feet, S 87°-12'-00" W 98.6 feet to an iron pin in the east right-of-way line of U.S. Highway #25 & 421, Berea Road, a corner, thence with said right-of-way N 10°-58'-00" W 253.7 feet to the beginning containing 3.34 acres.

A plat of the foregoing property which describes the property in more accurate detail is recorded in the Madison County Clerk's Office in Plat Book 8 at Page 28, to which reference is hereby made.

And being the same property conveyed to Jack E. Whitaker, Trustee under Trust Agreement dated May 30, 19872, by deed of conveyance from Florence C. Asbell, individually, a widow, and Florence C. Asbell as Executrix of the Estate of Bessie Current, dated November 19, 1986, and recorded in Deed Book 380 at page 613 in the office of the Madison County Clerk.

WHEREAS, Ordinance No. 87-39 declaring intent to annex said tract of land, pursuant to KRS 81A.410, 81A.420 and Chapter 424 of KRS was duly enacted on the 17th day of November, 1987.

NOW, THEREFORE BE IT ORDAINED by the Board of Commissioners of the City of Richmond that:

1. The unincorporated territory described above being adjacent and contiguous to the corporate limits of the City of Richmond, Kentucky is hereby annexed to the boundaries of the City of Richmond, and is zoned B-3.
2. The Codes Enforcement Officer make the appropriate changes to the Official Zoning Map of the City of Richmond.
3. The City Clerk cause this Ordinance to be published in accordance with the appropriate Kentucky Revised Statutes.

DATE OF FIRST READING December 1, 1987

DATE OF SECOND READING December 15, 1987

MOTION BY Commissioner Todd

MOTION BY Commissioner Todd

SECONDED BY Commissioner McAninch

SECONDED BY Commissioner McAninch

VOTE:	YES	NO
Commissioner Ballou	x	
Commissioner McAninch	x	
Commissioner McWhorter	x	
Commissioner Todd	x	
Mayor Baker	x	

VOTE:	YES	NO
Commissioner Ballou	x	
Commissioner McAninch	x	
Commissioner McWhorter		absent
Commissioner Todd	x	
Mayor Baker	x	

Earl B. Baker
Mayor

Attest:

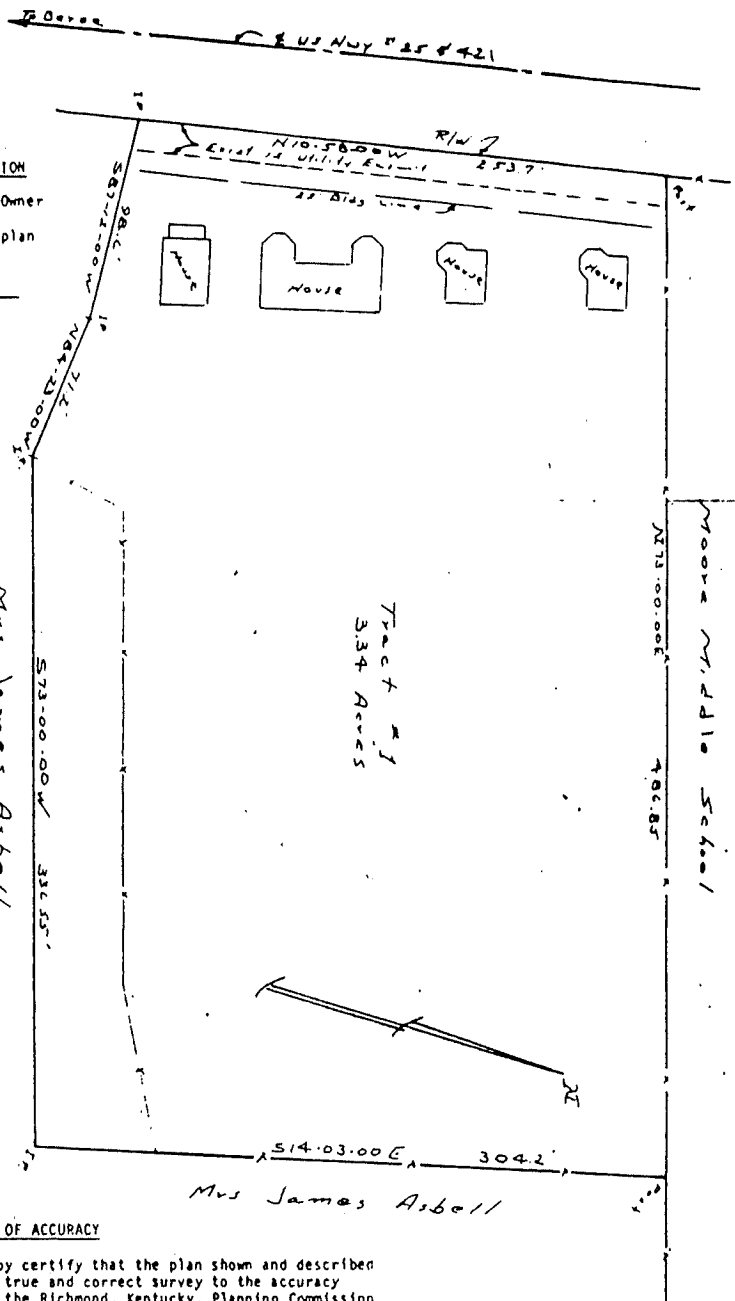
Susan E. Higgins
City Clerk

NOTE: The purpose of this plat is to establish Tract #1
 All utilities are existing

CERTIFICATE OF OWNERSHIP AND DEDICATION

I hereby certify that I am the Owner of the property shown and described hereon and that I hereby adopt this plan of subdivision with my free consent.

Florence C. Asbell



Moore Middle School

Plat No. 8
 P-1-28

Reviewed: 8/12/86

MRS JAMES ASBELL PROP.
 US HWY. # 25 & 421
 MADISON COUNTY, KENTUCKY
 CMW / LUXON ENGINEERS
 RICHMOND, KENTUCKY
 AUG. 1986 1"=50'-0" DWG. 868-B3

MINOR PLAT

CERTIFICATE OF ACCURACY

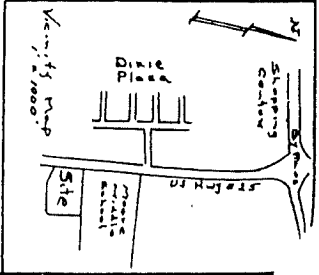
I hereby certify that the plan shown and described hereon is a true and correct survey to the accuracy required by the Richmond, Kentucky, Planning Commission and that the monuments have been placed as shown on this plat.

Date: 8-12-86 *Chasen Williams PE #6129 RLS #707*
 Registered Engineer and Surveyor

CERTIFICATE OF APPROVAL FOR RECORDING

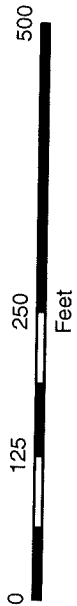
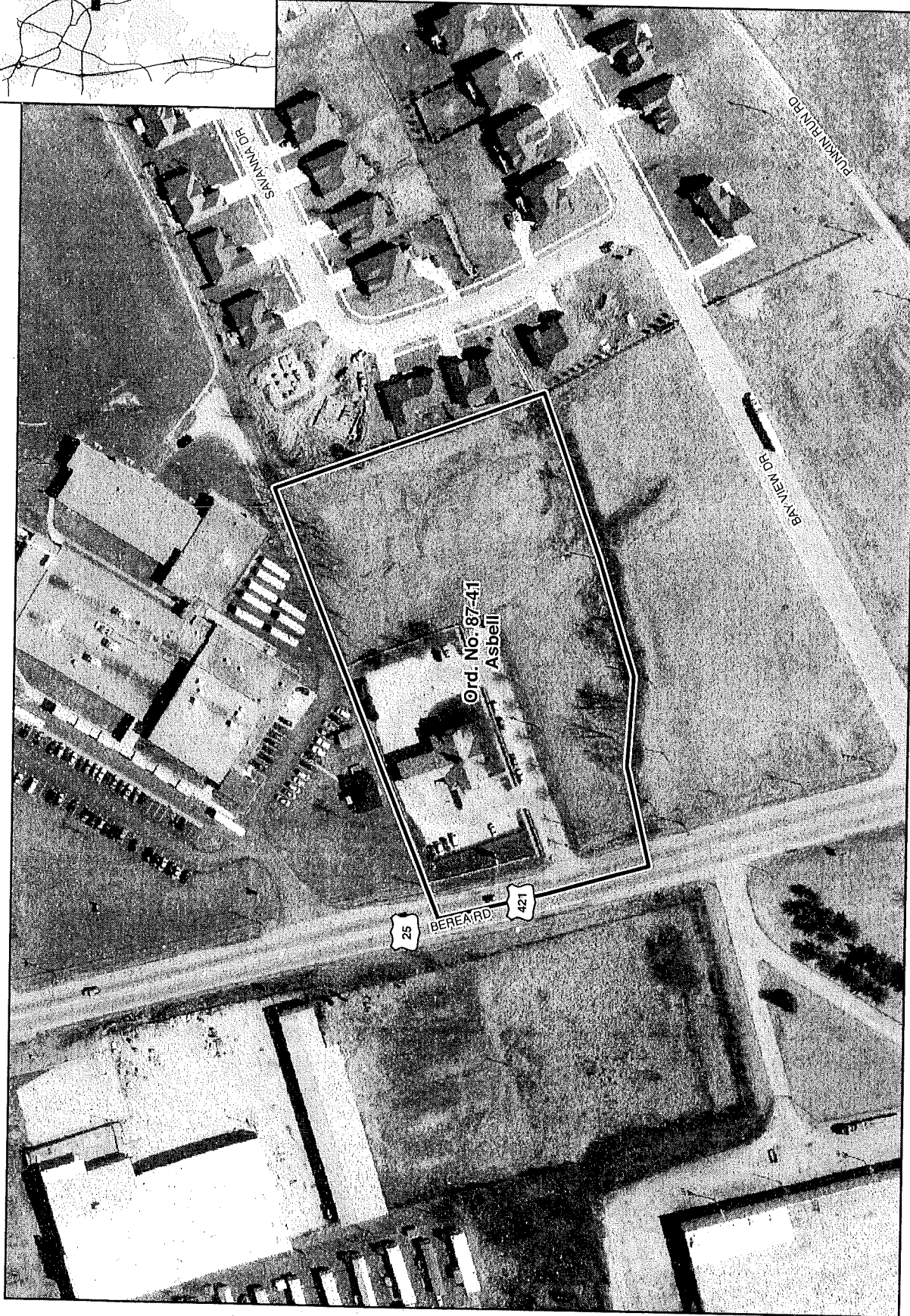
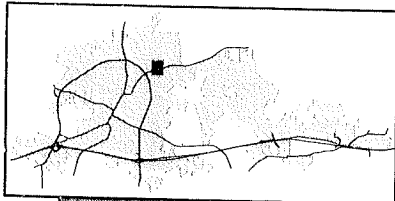
I hereby certify that the subdivisor plat shown hereon has been found to comply with the subdivision regulations for Richmond, Kentucky, with the exception of such variances, if any, as are noted in the minutes of the Planning Commission and that it has been approved for recording in the office of the County Clerk.

Date: 22 Aug 1986 *Joseph R. Dumas*
 Chairman, Planning Commission



87-41

Annexation Map, Richmond, Kentucky



This map represents approximate annexation boundaries but is not a legal survey.

Disclaimer: While the GIS Office strives to maintain accurate data, the City of Richmond does not guarantee its maps or data to be complete, accurate, current, or without error, nor does the City guarantee the fitness of the data for a particular use.

Richmond GIS
May 25, 2005

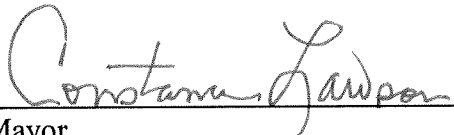
A certain tract of land situated on the east side of the right-of-way of U.S. Highway 25 and south of the Clark Moore Middle School in the Commonwealth of Kentucky, County of Madison consisting of 3.34 acres and described as follows:

The point of beginning being a post in the east right-of-way line of U.S. Highway 25, a corner to Clark Moore Middle School, thence leaving said highway with the line of Clark Moore Middle School, said line being the existing south city limits line N73°00'00"E 486.86 feet to a post and new corner to Mrs. James Asbell, thence a new line with Asbell's S14°03'00"E 304.20 feet to an iron pin and new corner with Asbell, thence continuing a new line with Asbell, S73°00'00"W 336.55 feet, N84°23'00"W 71.20 feet, S87°12'00"W 98.60 feet, to an iron pin in the east right-of-way line of U.S. Highway 25, a corner, thence with the said right-of-way N10°58'00"W 253.63 feet the point of beginning containing 3.34 acres more or less.

This Resolution shall be in full force and effect upon reading and adoption by the City of Richmond Board of Commissioners.

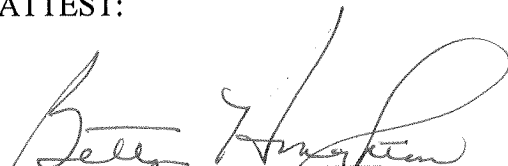
DATE OF READING: *October 27, 2009*
MOTION BY: *Commissioner Brewer*
SECONDED BY: *Commissioner Blythe*

VOTE:	YES	NO
Commissioner Blythe	X	
Commissioner Brewer	X	
Commissioner Smart	X	
Commissioner Strong	<i>Absent</i>	
Mayor Lawson	X	



Mayor

ATTEST:



City Clerk