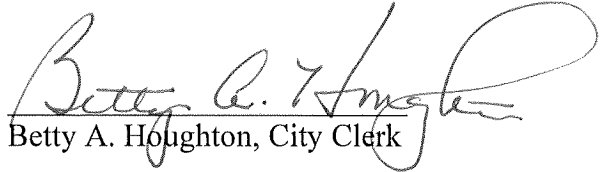


**CERTIFICATE OF CITY CLERK**

I, Betty A. Houghton, hereby certify that I am duly qualified and acting City Clerk of the City of Richmond, Kentucky, and that Ordinance 88-15 is a true and correct copy according to the Legal Books of the City of Richmond. (I was not City Clerk during this timeframe and can only certify that this Ordinance is printed in the City of Richmond's Legal Book). According to the Ordinance Legal Book stored in the city vault, this ordinance was approved and adopted June 21, 1988 at a duly held City Commission meeting in accordance with all applicable requirements of Kentucky law, including KRS 61.810, 61.815, 61.820 and 61.825, that a quorum was present for this meeting and that said ordinance has not been modified, amended, revoked, or repealed and that same is now in full force and effect.

**IN TESTIMONY WHEREOF**, witness my signature as City Clerk and the official Seal of said City this the October 27, 2009.

  
Betty A. Houghton, City Clerk

(Seal of City)

RECEIVED AND FILED  
DATE Oct. 30, 2009

TREY GRAYSON  
SECRETARY OF STATE  
COMMONWEALTH OF KENTUCKY  
BY Kandice Adams

ORDINANCE NO. 88-15

AN ORDINANCE OF THE CITY OF RICHMOND, KENTUCKY ANNEXING TO THE CORPORATE LIMITS OF THE CITY OF RICHMOND, KENTUCKY 42.48 ACRES OF LAND ADJACENT TO THE CITY LIMITS AND THE SOUTH SIDE OF THE EASTERN BY-PASS.

WHEREAS, the owners of the unincorporated territory described below would like to be annexed to the corporate limits of the City of Richmond, Kentucky, 42.48 acres of land that is adjacent and contiguous to the City and bounded and described as follows:

A certain tract of land located at the south end of Killarney Lane and laying between I-75 and College Park Subdivision in Madison County, Kentucky and being bounded by survey made October 19, 1987 by Charles E. Black, a licensed land surveyor (L.S. 670) and further described as follows:

Beginning at a steel pin in the east right-of-way line of Killarney Lane at the intersection of said line with the existing City Limits line; said pin being located 1149.74 feet south of the south right-of-way line of the Eastern By-Pass; thence leaving Killarney Lane with the existing City Limits line S86° 29' 02"W 680.70 feet to a steel pin and corner to College Park Subdivision and Mason-Hanger; thence leaving College Park Subdivision with the lines of Mason-Hanger four (4) calls: S 30° 02' 49"W 539.86 feet to a steel pin; thence S 28° 29' 13"W 118.66 feet to a steel pin; thence S 28° 55' 00"W 222.90 feet to a steel pin; thence S 30° 27' 22"W 1679.09 feet to a steel pin in the east right-of-way line of I-75; thence leaving Mason-Hanger with said right-of-way line five (5) calls: N 10° 36' 23"W 629.70 feet to a steel pin; thence N 05° 57' 04"W 350.28 feet to a steel pin; thence N 07° 13' 47"W 500.37 feet to a steel pin; thence N 02° 21' 57"W 724.68 feet to a drilled hole in a concrete post base, thence N 09° 24' 18"E 118.60 feet to a steel pin at the intersection of the existing south City Limits line with the said right-of-way (also common corner to Tract 21); thence leaving said east right-of-way line with the existing south City Limits line (and south line of Tracts 21 and 8) two (2) calls: S86° 35' 07"E 453.54 feet to a steel pin; thence S 86° 29' 02"E 332.88 feet to a steel pin in the west right-of-way line; thence crossing Killarney Lane S 86° 29' 02"E 50.00 feet to a steel pin in the east right-of-way line of Killarney Lane and point of beginning and containing 42.48 acres, and

WHEREAS, the Richmond Planning and Zoning Commission on April 13, 1988 recommended that this tract be zoned B-3.

NOW, THEREFORE BE IT ORDERED by the Board of Commissioners of the City of Richmond, Kentucky that:

1. The unincorporated territory described above being adjacent and contiguous to the corporate limits of the City of Richmond, Kentucky is hereby annexed to the boundaries of the City of Richmond and zoned B-3.
2. If this Ordinance be enacted, the City Clerk is ordered to publish this Ordinance pursuant to KRS 81.100 and Chapter 424 of the KRS.

DATE OF FIRST READING June 7, 1988

DATE OF SECOND READING June 21, 1988

MOTION BY Commissioner Strong

MOTION BY Commissioner McAninch

SECONDED BY Commissioner Carrier

SECONDED BY Commissioner Carrier

VOTE:

	YES	NO
Commissioner Carrier	x	
Commissioner Hacker	x	
Commissioner McAninch	x	
Commissioner Strong	x	
Mayor Baker	x	

VOTE:

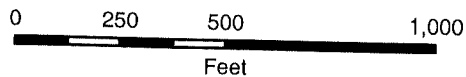
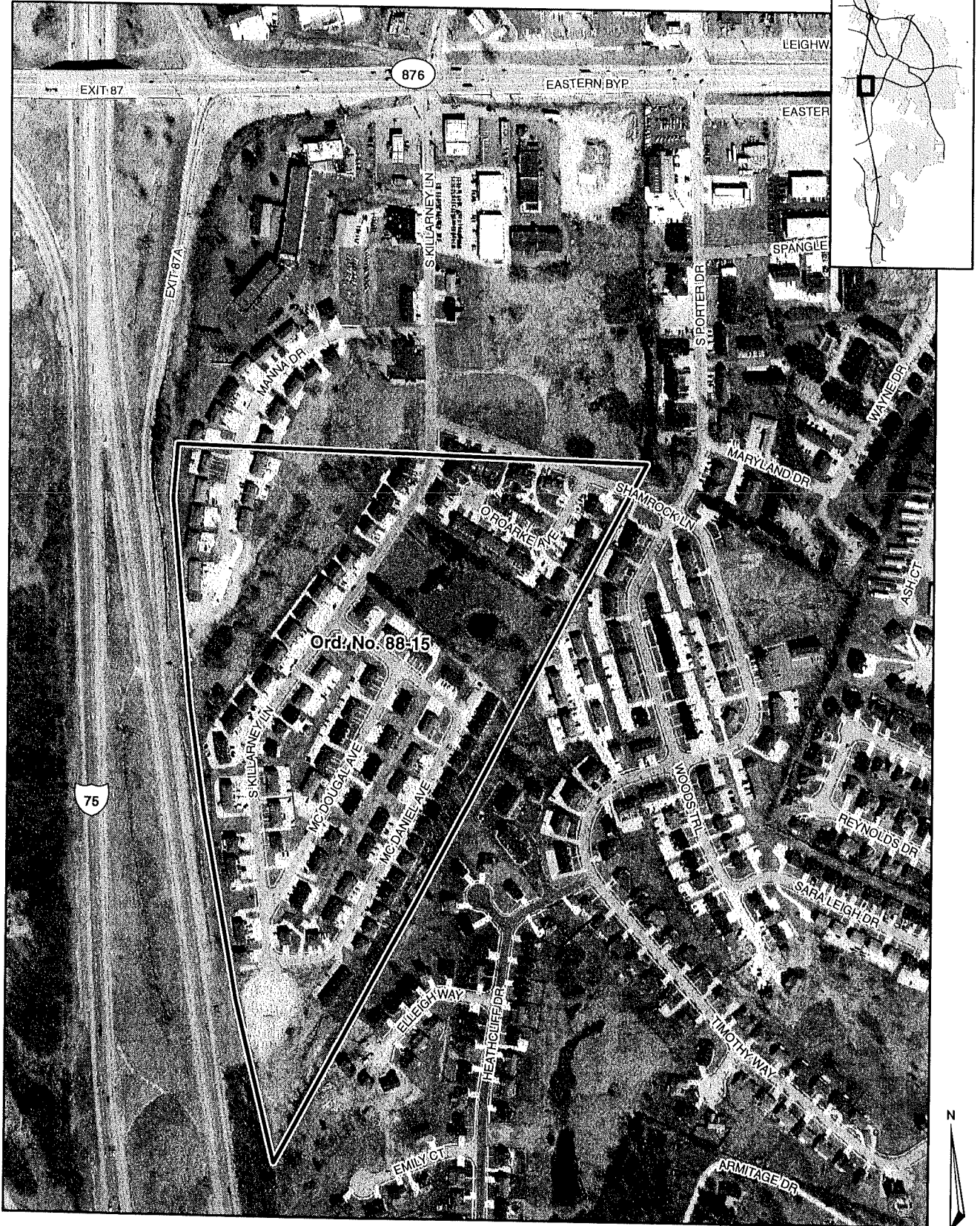
	YES	NO
Commissioner Carrier	x	
Commissioner Hacker	x	
Commissioner McAninch	x	
Commissioner Strong	x	
Mayor Baker	x	

Earl B. Baker  
Mayor

Attest:

Susan E. Higgins  
City Clerk

# Annexation Map, Richmond, Kentucky



This map represents approximate annexation boundaries but is not a legal survey.

Richmond GIS  
May 25, 2005

Disclaimer: While the GIS Office strives to maintain accurate data, the City of Richmond does not guarantee its maps or data to be complete, accurate, current, or without error, nor does the City guarantee the fitness of the data for a particular use.

OVERSIZE MAP INCLUDED WITH  
SUBMISSION.

To research the map, contact the  
Office of Secretary of State  
or the County Clerk.