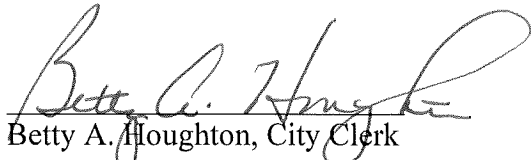


CERTIFICATE OF CITY CLERK

I, Betty A. Houghton, hereby certify that I am duly qualified and acting City Clerk of the City of Richmond, Kentucky, and that Ordinance 89-31 is a true and correct copy according to the Legal Books of the City of Richmond. (I was not City Clerk during this timeframe and can only certify that this Ordinance is printed in the City of Richmond's Legal Book). According to the Ordinance Legal Book stored in the city vault, this ordinance was approved and adopted July 18, 1989 at a duly held City Commission meeting in accordance with all applicable requirements of Kentucky law, including KRS 61.810, 61.815, 61.820 and 61.825, that a quorum was present for this meeting and that said ordinance has not been modified, amended, revoked, or repealed and that same is now in full force and effect.

IN TESTIMONY WHEREOF, witness my signature as City Clerk and the official Seal of said City this the October 27, 2009.


Betty A. Houghton, City Clerk

(Seal of City)

RECEIVED AND FILED
DATE Oct. 30, 2009

TREY GRAYSON
SECRETARY OF STATE
COMMONWEALTH OF KENTUCKY
BY Randie Adkins

ORDINANCE NO. 89-31

AN ORDINANCE OF THE CITY OF RICHMOND, KENTUCKY ANNEXING 161.465 ACRES OF LAND ADJACENT TO THE CITY LIMITS AND LOCATED ON THE SOUTH SIDE OF EASTERN BY PASS AND THE EAST SIDE OF BOGGS LANE.

WHEREAS, The Richmond Planning and Zoning Commission held a Public Hearing on May 10, 1989, and recommends that this land be designated with a zone classification of I-2, and

WHEREAS, the owner of record of the unincorporated territory described below would like to have annexed to the corporate limits of the City of Richmond, Kentucky 161, 465 acres of land adjacent to the City Limits and described as follows:

Beginning at a steel post in the south right-of-way line of the Eastern By-Pass, a corner to the Richmond Mall, thence leaving the Eastern By-Pass with the line of the Richmond Mall, said line being the city limits line of Richmond, Kentucky, S14°-51'-00"E 325.16 feet, S16°-00'-00"E 933.5 feet, S65°-03'-00"E 632.8 feet to a steel post and corner to Dixie Plaza Mobile Home; thence with the line of Dixie Plaza Mobile Homes S25°-10'-4"-W passing the corner of the Caperton Estate at 247.16 feet, in all 347.3 feet to a post and corner to the Caperton Estate, thence continuing with the line of the Caperton Estate S42°-26'-36"E 1271.46 feet, S64°-20'-38"W 341.85 feet, S00°-05'-53"E 2086.10 feet to a post in the north right-of-way line of the CSX Railroad, a corner, thence with said north Railroad right-of-way N51°-34'-22" 126.11 feet, N44°-44'-38"W 238.44 feet, N35°-50'-01"W 478.51 feet, N38°-47'-20"W 3180.08 feet, N36°-07'-02"W 112.80 feet, N31°-30'-58"W 187.54 feet, N26°-10'-44"W 107.78 feet, N26°-10'-44"W 107.78 feet, N20°-28'-46"W 206.37 feet to a fence post at the intersection of the north railroad right-of-way with the east right-of-way line of Boggs Lane, a corner, thence with the east right-of-way line of Boggs Lane N26°-50'-08"E 309.53 feet, N24°-30'-29"W 85.04 feet, N01°-33'-41"W 98.66 feet, N10°-46'-20"E 144.92 feet, N16°-23'-38"E 191.22 feet, N24°-17'-11"E 433.10 feet to a steel post at the intersection of the east right-of-way line of Boggs Lane with the south right-of-way line of the Eastern By-Pass, thence with said south right-of-way line N86°-09'-16"E 387.55 feet, S60°-50'-39"E 61.25 feet, N80°-52'-27"E 200.36 feet, N63°-16'-59"E 80.91 feet, N80°-27'-10"E 270.83 feet, N80°-24'-56"E 155.63 feet, N81°-25'-01"E 20.14 feet to the beginning containing 161.465 acres.

NOW, THEREFORE BE IT ORDAINED by the Board of Commissioners of the City of Richmond that.

1. The unincorporated territory described above being adjacent and contiguous to the corporate limits of the City of Richmond, Kentucky is hereby annexed to the boundaries of the City of Richmond, and same is designated with zone classification of I-2 as designated by map attached and incorporated herein.
2. The Codes Enforcement Officer make the appropriate changes to the Official Zoning Map of the City of Richmond.
3. The City Clerk cause this Ordinance to be published in accordance with the appropriate Kentucky Revised Statutes.

DATE OF FIRST READING: June 20, 1989

DATE OF SECOND READING: July 18, 1989

MOTION BY: Commissioner Strong

MOTION BY: Commissioner McAninch

SECONDED BY: Commissioner Carrier

SECONDED BY Commissioner Hacker

Vote:	Yes	No
Commissioner Carrier	x	
Commissioner Hacker		absent
Commissioner McAninch	x	
Commissioner Strong	x	
Mayor Baker		absent

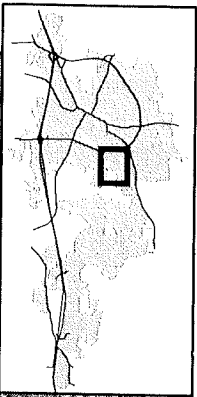
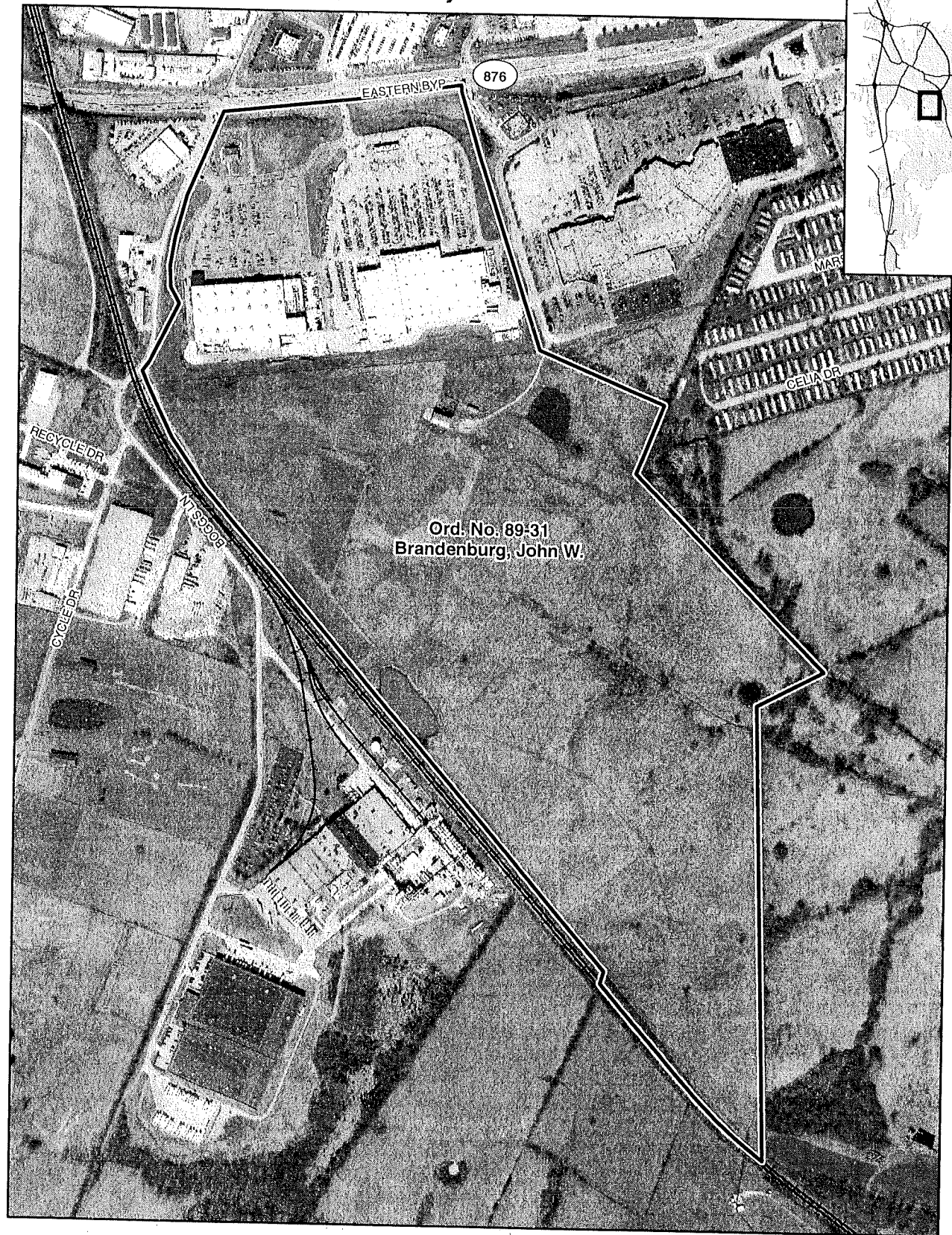
Vote:	Yes	No
Commissioner Carrier	x	
Commissioner Hacker	x	
Commissioner McAninch	x	
Commissioner Strong	x	
Mayor Baker		x

Earl B. Baker
Mayor

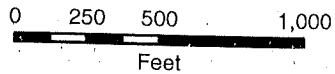
Attest:

Susan E. Higgins
City Clerk

Annexation Map, Richmond, Kentucky



Ord. No. 89-31
Brandenburg, John W.



This map represents approximate annexation boundaries but is not a legal survey.

Richmond GIS
May 25, 2005

Disclaimer: While the GIS Office strives to maintain accurate data, the City of Richmond does not guarantee its maps or data to be complete, accurate, current, or without error, nor does the City guarantee the fitness of the data for a particular use.

OVERSIZE MAP INCLUDED WITH
SUBMISSION.

To research the map, contact the
Office of Secretary of State
or the County Clerk.