


CERTIFICATE OF CITY CLERK

I, Betty A. Houghton, hereby certify that I am duly qualified and acting City Clerk of the City of Richmond, Kentucky, and that Ordinance 97-14 is a true and correct copy of this ordinance and was approved and adopted April 1, 1997 at a duly held City Commission meeting in accordance with all applicable requirements of Kentucky law, including KRS 61.810, 61.815, 61.820 and 61.825, that a quorum was present for this meeting and that said ordinance has not been modified, amended, revoked, or repealed and that same is now in full force and effect.

IN TESTIMONY WHEREOF, witness my signature as City Clerk and the official Seal of said City this the October 27, 2009.


Betty A. Houghton, City Clerk

(Seal of City)

RECEIVED AND FILED
DATE Oct 30, 2009

TREY GRAYSON
SECRETARY OF STATE
COMMONWEALTH OF KENTUCKY
BY Handie Adkins

ORDINANCE NO. 97-14

AN ORDINANCE OF THE CITY OF RICHMOND, KENTUCKY, ANNEXING APPROXIMATELY 55 ACRES OF LAND ADJACENT TO THE CITY LIMITS.

WHEREAS, the owner of record of the unincorporated territory described below would like to have annexed to the incorporated area of the City of Richmond, Kentucky, approximately 55 acres of land adjacent to the City Limits and,

WHEREAS, the sole owner/owners of the land being proposed for annexation have by letter dated February 8, 1997, applied for voluntary annexation and requested their property be zoned PSP.

WHEREAS, it is the intent of the Richmond City Board of Commissioners to annex this land described below as per annexation procedures established by Ordinance Number 96-17, adopted February 20, 1996.

Being the property of Madison Country Club Trust and being more particularly described as follows:

Beginning at a post in the east right of way line U. S. Highway No. 227 and at the southwest corner of Tract No. 1, thence the line of Tract No. 1 S 77° 45' E 24.51 chains S 83° 52' E 547.80 chains to a post in the west right of way line of the K. C. division of the L & N Railroad, at the southeast corner of Tract No. 1, thence said west right of way line, S 16° 30' E 123.42 chains, S 12° 30' E 153.78 chains, S 3° 45' E 203.94 chains, S 7° 35' W 284.46 chains, S 16° 15' W 227.04 chains, S 24° 45' W 256.08 chains to a post in said right of way line and at the north east corner of Tract No. 3, thence the line of Tract No. 3 N 68° 15' W passing the corner to Tract No. 3 with the Central High School lot at 30.23 chains and continuing the same course with the High School lot, in all 2502.06 chains to a post in the east right of way line of U. S. Highway No. 227 thence with said east right of way line, N 26° 0' E 11.35 chains to the beginning, containing approximately 55 acres.

WHEREAS, the proposed annexation meets the requirement of KRS 81A.410, and the owner of record of such land has consented in writing to the annexation pursuant to KRS 81A.412, and

WHEREAS, it is declared pursuant to KRS 81A.420 that it is desirable to annex this unincorporated territory and the Richmond Planning and Zoning Commission conducted a Public Hearing pursuant to KRS 100.209 for its recommendation as to zone classifications and any zoning map amendments.

NOW, THEREFORE BE IT ORDAINED by the Board of Commissioners of the City of Richmond that:

SECTION I

The unincorporated territory described above being adjacent and contiguous to the corporate limits of the City of Richmond, Kentucky, is hereby proposed to be annexed to the boundaries of the City of Richmond.

SECTION II

The Richmond Planning and Zoning Commission conducted a Public Hearing pursuant to KRS. 100.209 on March 12, 1997, and recommended that the zoning classifications of subject property be PSP.

SECTION III

The City Clerk cause this Ordinance to be published in accordance with the appropriate Kentucky Revised Statutes.

DATE OF FIRST READING: March 18, 1997

MOTION BY: Commissioner Tobler

SECONDED BY: Commissioner Jones

VOTE:	YES	NO
Commissioner Hacker	x	
Commissioner Jones	x	
Commissioner Robbins	x	
Commissioner Tobler	x	
Mayor Durham	x	

DATE OF SECOND READING: April 1, 1997

MOTION BY: Commissioner Robbins

SECONDED BY: Commissioner Jones

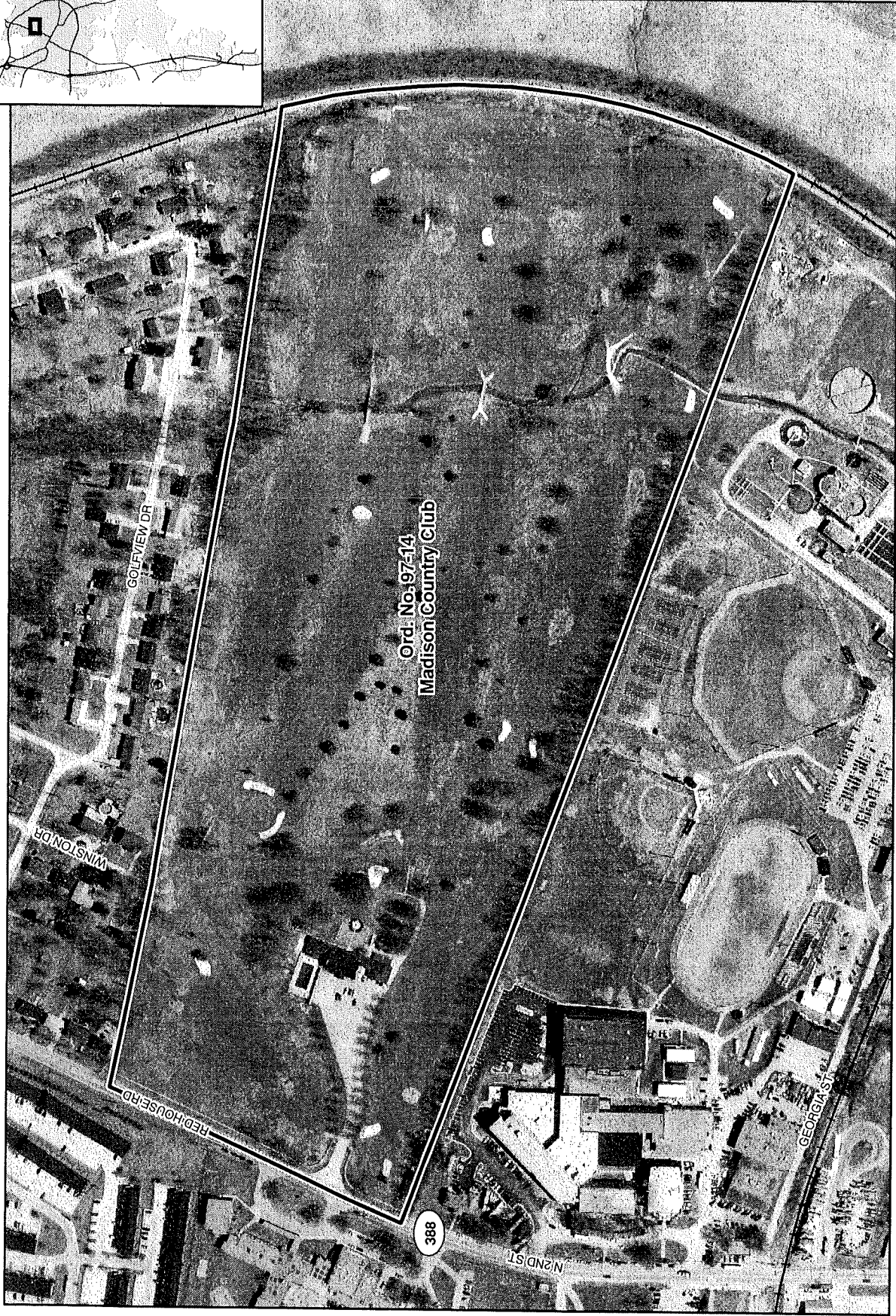
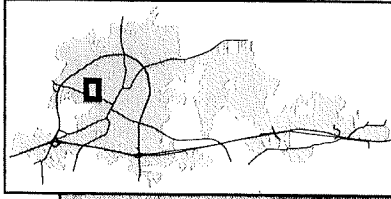
VOTE:	YES	NO
Commissioner Hacker	x	
Commissioner Jones	x	
Commissioner Robbins	x	
Commissioner Tobler	x	
Mayor Durham	x	

Paul G. Arden
Mayor

Attest:

Betty Houghton
City Clerk

Annexation Map, Richmond, Kentucky



This map represents approximate annexation boundaries but is not a legal survey.

Disclaimer: While the GIS Office strives to maintain accurate data, the City of Richmond does not guarantee its maps or data to be complete, accurate, current, or without error, nor does the City guarantee the fitness of the data for a particular use.

Richmond GIS
May 24, 2005

OVERSIZE MAP INCLUDED WITH
SUBMISSION.

To research the map, contact the
Office of Secretary of State
or the County Clerk.