


CERTIFICATE OF CITY CLERK

I, Betty A. Houghton, hereby certify that I am duly qualified and acting City Clerk of the City of Richmond, Kentucky, and that Ordinance 97-41 is a true and correct copy of this ordinance and was approved and adopted August 19, 1997 at a duly held City Commission meeting in accordance with all applicable requirements of Kentucky law, including KRS 61.810, 61.815, 61.820 and 61.825, that a quorum was present for this meeting and that said ordinance has not been modified, amended, revoked, or repealed and that same is now in full force and effect.

IN TESTIMONY WHEREOF, witness my signature as City Clerk and the official Seal of said City this the October 27, 2009.


Betty A. Houghton, City Clerk

(Seal of City)

RECEIVED AND FILED
DATE October 30, 2009

TREY GRAYSON
SECRETARY OF STATE
COMMONWEALTH OF KENTUCKY
BY Handie Adkins

ORDINANCE NO. 97- 41

AN ORDINANCE OF THE CITY OF RICHMOND, KENTUCKY, ANNEXING APPROXIMATELY 10 ACRES OF LAND ADJACENT TO THE CITY LIMITS.

WHEREAS, the owner of record of the unincorporated territory described below would like to have annexed to the incorporated area of the City of Richmond, Kentucky, approximately 10 acres of land adjacent to the City Limits and,

WHEREAS, The City of Richmond the sole owner/owners of the land being proposed for annexation have by letter dated June 11, 1997, applied for voluntary annexation and requested their property be zoned R-1-A.

WHEREAS, it is the intent of the Richmond City Board of Commissioners to annex this land described below as per annexation procedures established by Ordinance Number 96-17, adopted February 20, 1996.

A certain tract of land located in Madison County, Kentucky, on the waters of Otter Creek, and fronting the Richmond and Irvine Road, about two miles East of the City of Richmond, Kentucky, and bounded and described as follows:

Beginning at a point in the center of the Richmond-Irvine turn-pike S 57 E 28.4 poles, to a point in the center of the pike corner to the balance of the land of the parties of the first part (A. J. Tribble), thence with their line S 15 W 81 1/2 poles to A. S. Gott's line, thence with his line N 88 1/2 W 12.5 to corner to J. G. Taylor, and said Gott's line, thence with said Taylor's line N 6 1/4 E 94.4 poles to the beginning, containing ten and twenty-eight one hundredths (10.28) acres, more or less.

There is excluded from this conveyance and the same is not included therein that part of the above described property conveyed to the State Highway Department by Henry Bishop and wife, by deed dated June 17, 1926, and recorded in Deed Book 107, page 406, and bounded and described as set out in said deed to which reference is hereby made for an exact description of said exclusion.

There is also excluded from the above boundary that portion of land conveyed to the Commonwealth of Kentucky, by deed dated April 12, 1938, and recorded in Deed Book 118, at page 266, Madison County Court Clerk's Office to which reference is hereby made for an exact description.

WHEREAS, the proposed annexation meets the requirement of KRS 81A.410, and the owner of record of such land has consented in writing to the annexation pursuant to KRS 81A.412, and

WHEREAS, it is declared pursuant to KRS 81A.420 that it is desirable to annex this unincorporated territory and the Richmond Planning and Zoning Commission should conduct a Public Hearing pursuant to KRS 100.209 for its recommendation as to zone classifications and any zoning map amendments.

NOW, THEREFORE BE IT ORDAINED by the Board of Commissioners of the City of Richmond that:

SECTION I

The unincorporated territory described above being adjacent and contiguous to the corporate limits of the City of Richmond, Kentucky, is hereby annexed to the boundaries of the City of Richmond.

SECTION II

The Richmond Planning and Zoning Commission conducted a Public Hearing pursuant to KRS. 100.209 on July 23, 1997, and recommended that the zoning classifications of subject property be R-1-A.

SECTION III

The City Clerk cause this Ordinance to be published in accordance with the appropriate Kentucky Revised Statutes.

DATE OF FIRST READING: August 5, 1997

MOTION BY: Commissioner Tobler

SECONDED BY: Commissioner Jones

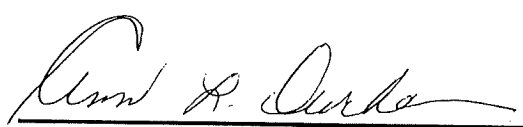
VOTE:	YES	NO
Commissioner Hacker	x	
Commissioner Jones	x	
Commissioner Robbins	x	
Commissioner Tobler	x	
Mayor Durham	x	

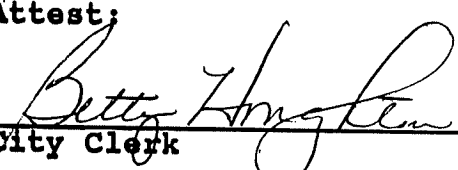
DATE OF SECOND READING: August 19, 1997

MOTION BY: Commissioner Jones

SECONDED BY: Commissioner Robbins

VOTE:	YES	NO
Commissioner Hacker	x	
Commissioner Jones	x	
Commissioner Robbins	x	
Commissioner Tobler	x	
Mayor Durham	x	


Ann H. Durham
Mayor

Attest:

Betty Hinglen
City Clerk

To Richmond ——— KY HWY 52 ——— To Irvine

Catalpa Loop (Old Irvine Road)

City of Richmond

City of Richmond
D.B. 472 P. 809
10 +/- acres



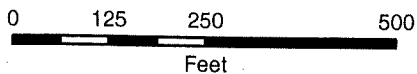
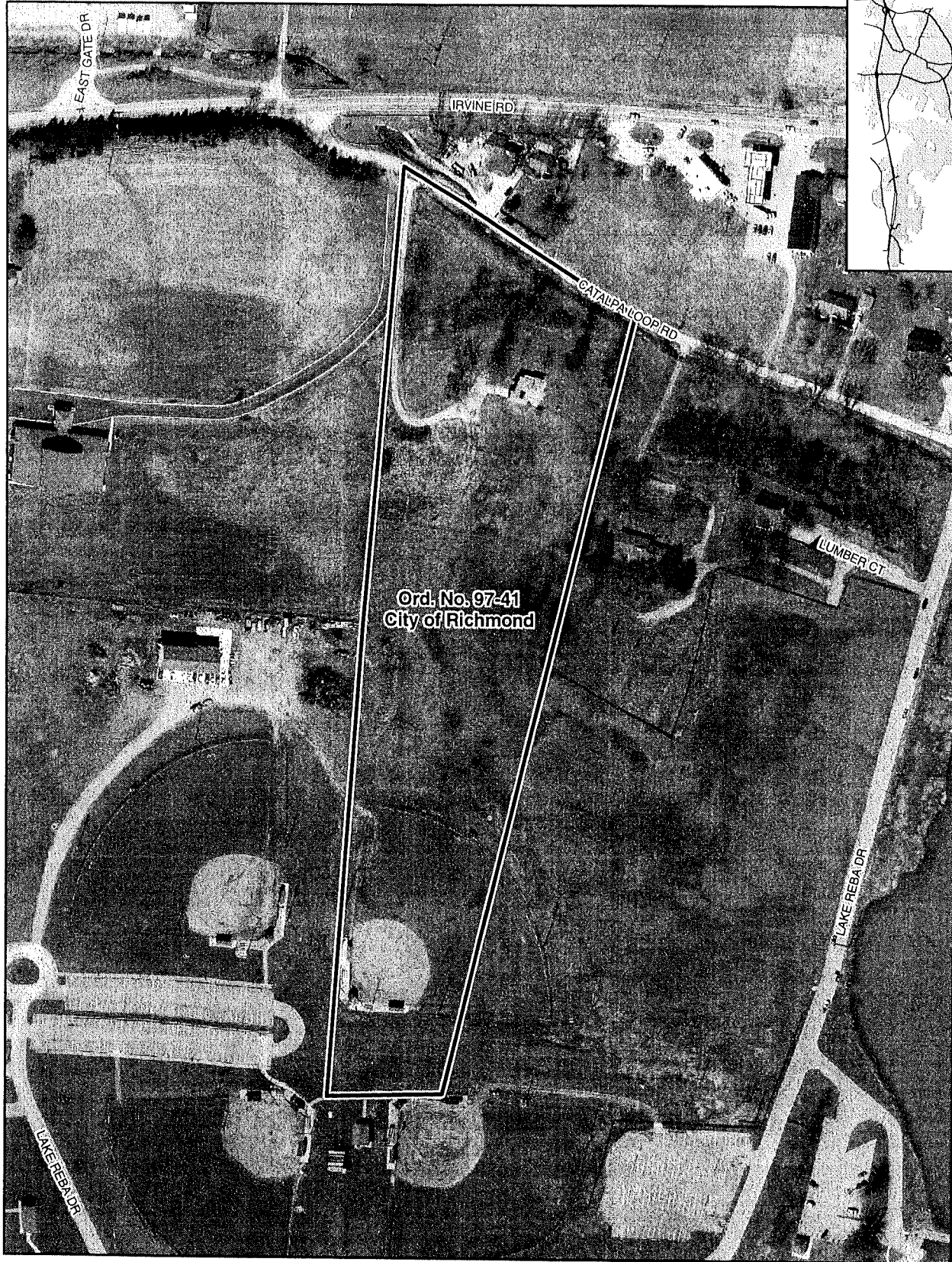
Warden P. Tucker

Annexation drawing from deed;
this is not a survey.

Drawn by: CMW Engineers, Inc.
136 Big Hill Avenue
Richmond, KY
Dwg. No. 976-A3

City of Richmond

Annexation Map, Richmond, Kentucky



This map represents approximate annexation boundaries but is not a legal survey.

Richmond GIS
May 24, 2005

Disclaimer: While the GIS Office strives to maintain accurate data, the City of Richmond does not guarantee its maps or data to be complete, accurate, current, or without error, nor does the City guarantee the fitness of the data for a particular use.

OVERSIZE MAP INCLUDED WITH
SUBMISSION.

To research the map, contact the
Office of Secretary of State
or the County Clerk.