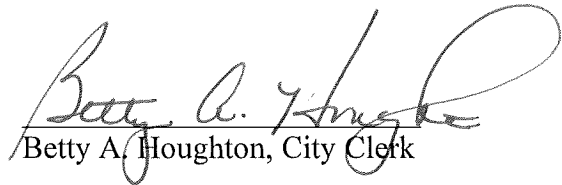


CERTIFICATE OF CITY CLERK

I, Betty A. Houghton, hereby certify that I am duly qualified and acting City Clerk of the City of Richmond, Kentucky, and that Ordinance 89-47 is a true and correct copy according to the Legal Books of the City of Richmond. (I was not City Clerk during this timeframe and can only certify that this Ordinance is printed in the City of Richmond's Legal Book). According to the Ordinance Legal Book stored in the city vault, this ordinance was approved and adopted September 19, 1989 at a duly held City Commission meeting in accordance with all applicable requirements of Kentucky law, including KRS 61.810, 61.815, 61.820 and 61.825, that a quorum was present for this meeting and that said ordinance has not been modified, amended, revoked, or repealed and that same is now in full force and effect.

IN TESTIMONY WHEREOF, witness my signature as City Clerk and the official Seal of said City this the October 27, 2009.


Betty A. Houghton, City Clerk

(Seal of City)

RECEIVED AND FILED
DATE Oct. 30, 2009

TREY GRAYSON
SECRETARY OF STATE
COMMONWEALTH OF KENTUCKY
BY Kandice Adkisson

ORDINANCE NO. 89-47

AN ORDINANCE OF THE CITY OF RICHMOND, KENTUCKY ANNEXING 34.9 ACRES OF LAND ADJACENT TO THE CITY LIMITS AND LOCATED ON THE WEST SIDE OF BIG HILL ROAD.

WHEREAS, the Richmond Planning and Zoning Commission held a Public Hearing on July 26, 1989, and recommends that this land be designated with a zone classification of R-1-A, and

WHEREAS, the owner of record of the unincorporated territory described below would like to have annexed to the corporate limits of the City of Richmond, Kentucky, 34.9 acres of land adjacent to the City limits and described as follows:

Beginning at a point in the west right-of-way line of the CSX Railroad, a corner with R. Shearer, thence with said right-of-way line S37°-52'-30"E 771.54 feet, S40°-30'-00"E 72.6 feet, S43°30'-00"E 66.0 feet, S47°-15'-00"E 66.0 feet, S49°-15'00"E 66.00 feet, S52°-00'-00"E 66.00 feet, S53°-45'-00"E 52.8 feet, S01°-45'00"E 23.7 feet, S49°-30'-00"E 630.00 feet to a point and new corner to Arthur Pace, thence leaving said Railroad right-of-way, a new line with Pace S70°-05'-26"W 795.77 feet to a point and corner to R. Shearer, thence with Shearer's line N86°-45'-00"W 696.3 feet, N66°-30'-00"W 542.52 feet, N28°-00'-00"E 1494.9 feet to the beginning containing 34.9 acres.

NOW, THEREFORE BE IT ORDAINED by the Board of Commissioners of the City of Richmond that:

1. The unincorporated territory described above being adjacent and contiguous to the corporate limits of the City of Richmond, Kentucky, is hereby annexed to the boundaries of the City of Richmond, and same is designated with zone classification of MP as designated by map attached and incorporated herein.
2. The Codes Enforcement Officer make the appropriate changes to the Official Zoning Map of the City of Richmond.
3. The City Clerk cause this Ordinance to be published in accordance with the appropriate Kentucky Revised Statutes.

Date of First Reading September 5, 1989

Date of Second Reading September 19, 1989

Motion By Commissioner Hacker

Motion By Commissioner Hacker

Seconded By Commissioner Carrier

Seconded By Commissioner McAninch

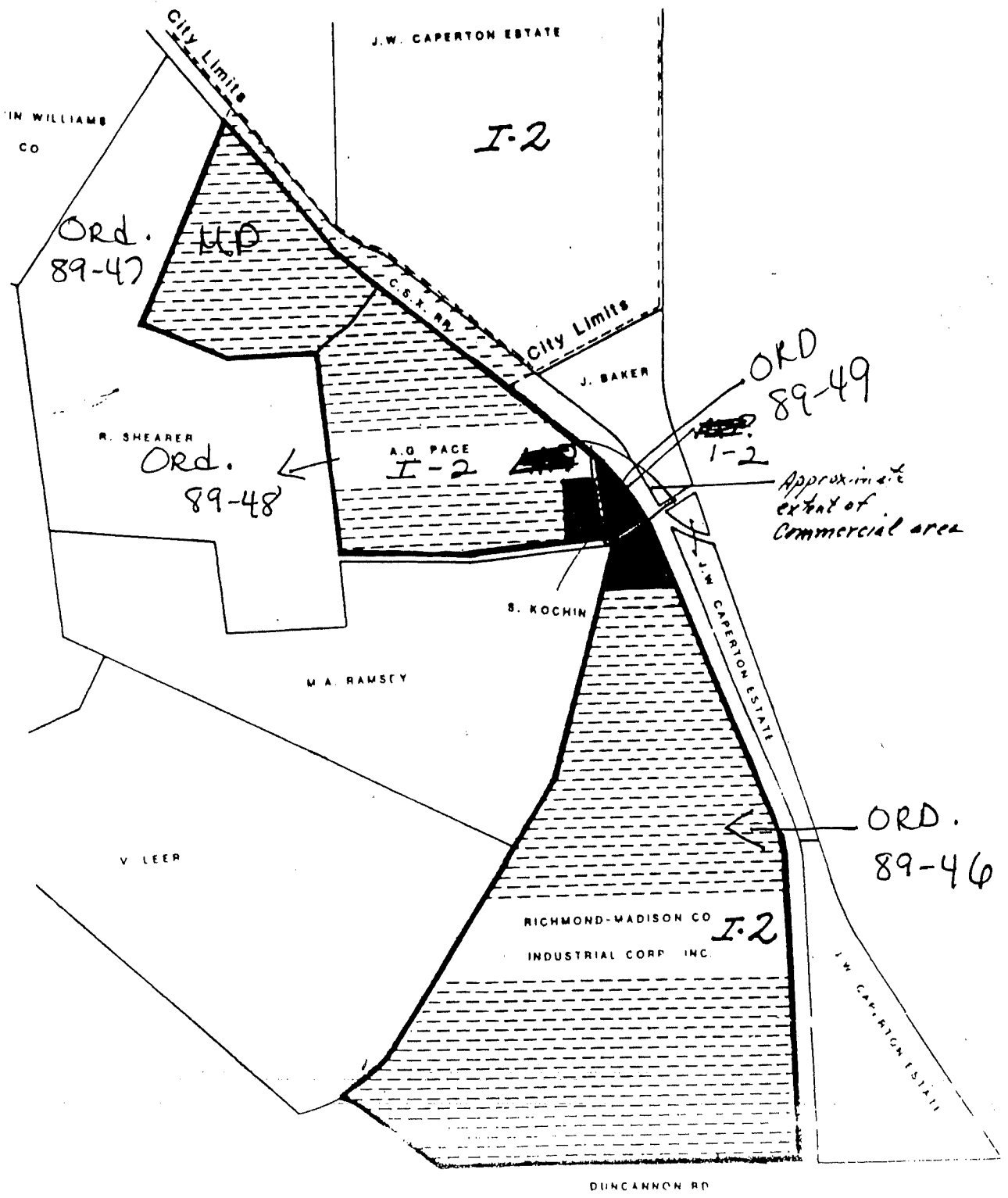
Vote:	Yes	No
Commissioner Carrier	x	
Commissioner Hacker	x	
Commissioner McAninch	x	
Commissioner Strong	x	
Mayor Baker	x	

Vote:	Yes	No
Commissioner Carrier	x	
Commissioner Hacker	x	
Commissioner McAninch	x	
Commissioner Strong	x	
Mayor Baker	x	

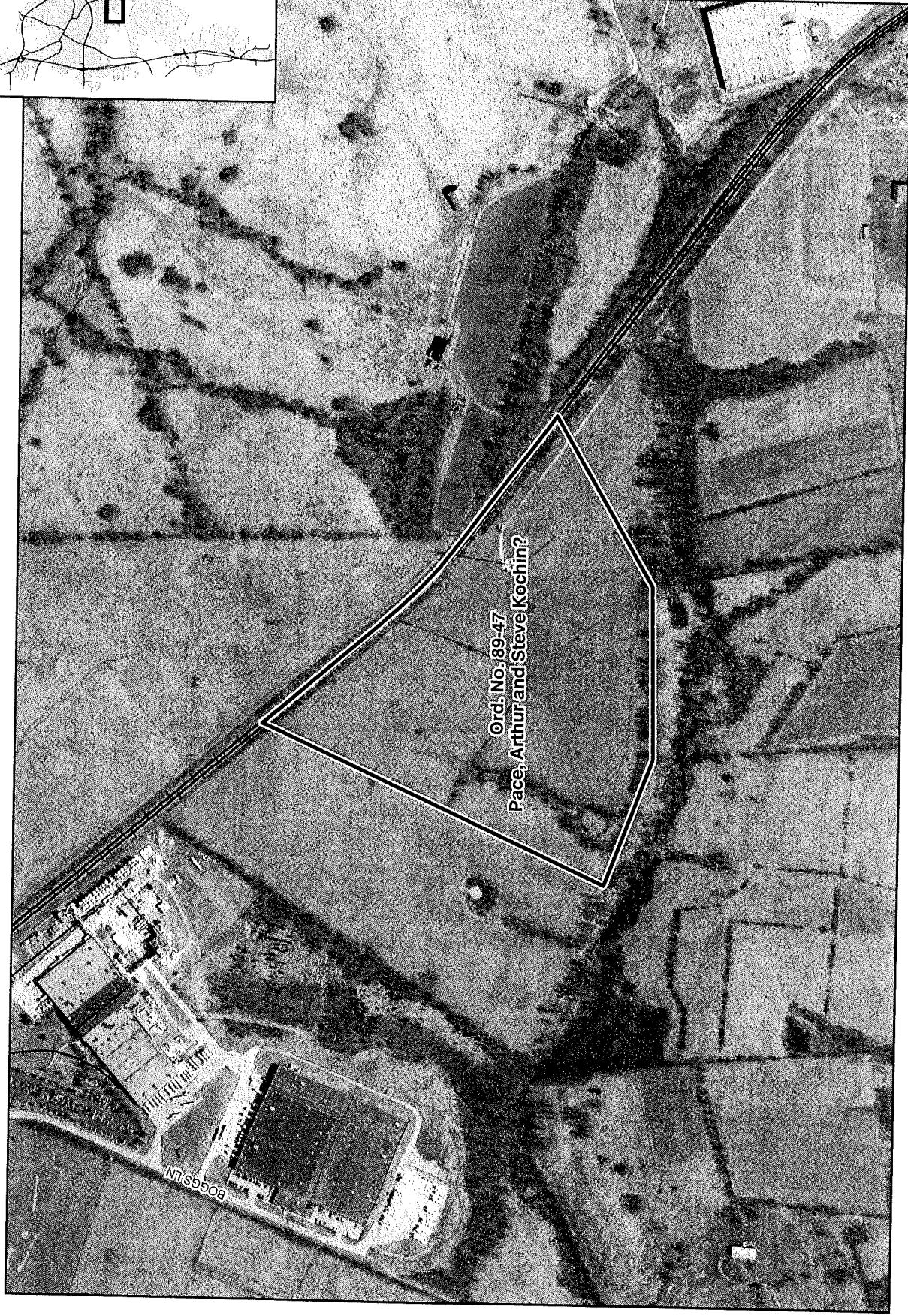
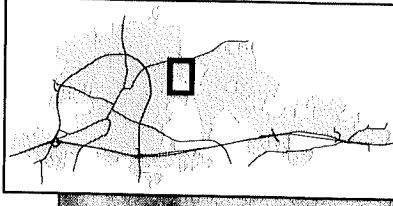
Earl B Baker
Mayor

Attest:

Susan E Niggin
City Clerk



Annexation Map, Richmond, Kentucky



This map represents approximate annexation boundaries but is not a legal survey.

Disclaimer: While the GIS Office strives to maintain accurate data, the City of Richmond does not guarantee its maps or data to be complete, accurate, current, or without error, nor does the City guarantee the fitness of the data for a particular use.

Richmond GIS
May 25, 2005

OVERSIZE MAP INCLUDED WITH
SUBMISSION.

To research the map, contact the
Office of Secretary of State
or the County Clerk.