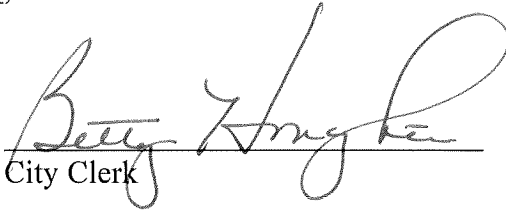


**CERTIFICATION**

I, Betty Houghton, Clerk of the City of Richmond do hereby certify that, the above Resolution 09-13 is a true and correct copy as was presented to the Richmond Board of Commissioners of the City of Richmond at their regular schedule meeting dated October 27, 2009.

Given under my hand this 27 day of October, 2009.

  
City Clerk

(SEAL)

RECEIVED AND FILED  
DATE Oct 30, 2009

TREY GRAYSON  
SECRETARY OF STATE  
COMMONWEALTH OF KENTUCKY  
BY Hardie Adkins

## RESOLUTION 09-13

### AN RESOLUTION ADOPTING A MODERN AND ACCURATE LEGAL DESCRIPTION OF TERRITORY PREVIOUSLY ANNEXED BY ORDINANCE

**WHEREAS**, the City of Richmond has enacted numerous ordinances annexing property into the corporate limits of the City of Richmond; and

**WHEREAS**, each individual annexation contains a prior survey of prepared by now unknown individual, and further references documentation that is no longer in existence, and

**WHEREAS**, the City wishes to provide a modern, accurate, easily identifiable legal description reflecting bearings and coordinates based upon the state plane coordinate system, including relevant GPS and GIS data, same having been certified by a professional land surveyor for each prior annexation; and

**WHEREAS**, the City wishes to comply with the requirements of Amended KRS 81A.470 effective July 13, 2004, and

**WHEREAS**, the City does not intend to amend or replace its prior ordinance annexing, but rather to interpret the defined boundaries of the territory previously annexed and adopt a modern and accurate legal description of territory previously annexed.

### **NOW THEREFORE, BE IT RESOLVED BY THE CITY COUNCIL OF THE CITY OF RICHMOND, KENTUCKY:**

**SECTION 1.** That the Richmond Board of Commissioners of the City of Richmond hereby adopts the following legal description, and a plat attached hereto as prepared by Dwayne Wheatley, Licensed Professional Land Surveyor No. 3265 as an accurate depiction of the property previously annexed into the corporate city limits of the City of Richmond by Ordinance 89-49 dated September 19, 1989, a copy of which is attached and hereby adopts said new legal description and plat as the official legal description and plat to be adopted by the City for all purpose when referencing this prior annexation.

**SECTION 2.** This new legal description as prepared by Dwayne Wheatley a Licensed Professional Land Surveyor No. 3265 is as follows:

Tract 1

**Note:** The following legal description is an accurate representation of the subject property as per listed ordinance and resolution. The legal description is based upon information provided to Abacus Engineering and Land Surveying, Inc., by the City of Richmond. This legal description is not intended to comply with 201 KAR 18:150 and as such shall not be used in connection with the sale or transfer of land.

A certain tract of land on the north side of a 24 foot pass way, approximately 400 feet west of U.S. Highway 25 south of Richmond in the Commonwealth of Kentucky, County of Madison consisting of 1.44 acres and described as follows:

The point of beginning being a point in the west right-of-way line of the L&N Railroad, and the north line of a 24 foot pass way, thence with the north line of said pass way two (2) calls, S71°28'26"W 31.55 feet to a steel pin, thence S88°09'11"W 143.72 feet, to a steel pin and new corner to Don Pinuer (said corner being in the west right-of-way line of a 100 foot Kentucky Utilities easement), thence leaving the north line of said pass way with a new line dividing the lands of Pinuer (and with the west line of said Kentucky Utilities easement) N17°13'25"E 462.63 feet to a steel pin in the west right-of-way line of the L&N Railroad, thence leaving the new line of Pineur (and with the west line of the Kentucky Utilities easement) with the lines of L&N Railroad, two (2) calls, S33°33'56"E 240.59 feet, to a steel pin, thence S23°02'31"W 246.42 feet to a steel pin and the point of beginning containing 1.44 acres more or less.

Tract 2

A certain tract of land on the north side of a 24 foot pass way, approximately 575 feet west of U.S. Highway 25 south of Richmond in the Commonwealth of Kentucky, County of Madison consisting of 3.98 acres and described as follows:

The point of beginning being a steel pin in the north line of a 24 foot pass way, a corner to Art Pace, thence with said pass way line S88°02'05"W 114.29 feet to a steel pin and corner to Art Pace, thence with a new line dividing the lands of Pace N9°11'26"W 899.62 feet, to a steel pin in the west right-of-way line of L&N Railroad, thence leaving the line of Pace with the new line of L&N three (3) calls, S45°13'50"E 211.73 feet to a steel pin, thence S41°09'18"E 250.51 feet to a steel pin, thence S37°19'52"E 131.46 feet to a steel pin and new corner to Pace, thence leaving the line of the L&N Railroad with a new line dividing the lands of Pace S17°13'25"W 462.64 feet to a steel pin and the point of beginning containing 3.98 acres more or less.

This Resolution shall be in full force and effect upon reading and adoption by the City of Richmond Board of Commissioners.

DATE OF READING: *October 27, 2009*  
MOTION BY: *Commissioner Brewer*  
SECONDED BY: *Commissioner Blythe*

VOTE:	YES	NO
Commissioner Blythe	X	
Commissioner Brewer	X	
Commissioner Smart	X	

**Commissioner Strong**  
**Mayor Lawson**

*Absent*  
X

*Constance Lawson*  
Mayor

ATTEST:

*Betty Hughes*  
City Clerk



P.O. Box 1164, Richmond, Kentucky 40476  
236 Boggs Lane, Suite 4

---


*"Surveys you can count on."*

**LEGAL DESCRIPTION FOR  
RESOLUTION 09-13  
(ORDINANCE 89-49)  
TRACT 1**

**Note:** The following legal description is an accurate representation of the subject property as per listed ordinance and resolution. The legal description is based upon information provided to Abacus Engineering and Land Surveying, Inc., by the City of Richmond. This legal description is not intended to comply with 201 KAR 18:150 and as such shall not be used in connection with the sale or transfer of land.

A certain tract of land on the north side of a 24 feet pass way, approximately 400 feet west of U.S. Highway 25 south of Richmond in the Commonwealth of Kentucky, County of Madison consisting of 1.44 acres and described as follows:

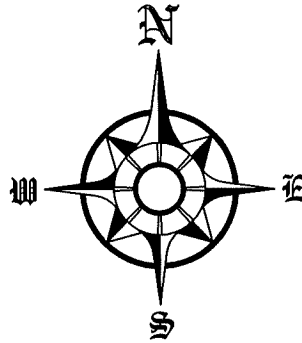
The point of beginning being a point in the west right-of-way line of the L&N Railroad, and the north line of a 24 foot pass way, thence with the north line of said pass way two (2) calls, S71°28'26"W 31.55 feet to a steel pin, thence S88°09'11"W 143.72 feet, to a steel pin and new corner to Don Pinuer (said corner being in the west right-of-way line of a 100 foot Kentucky Utilities easement), thence leaving the north line of said pass way with a new line dividing the lands of Pinuer (and with the west line of said Kentucky Utilities easement) N17°13'25"E 462.63 feet to a steel pin in the west right-of-way line of the L&N Railroad, thence leaving the new line of Pineur (and with the west line of the Kentucky Utilities easement) with the lines of L&N Railroad, two (2) calls, S33°33'56"E 240.59 feet, to a steel pin, thence S23°02'31"W 246.42 feet to a steel pin and the point of beginning containing 1.44 acres more or less.

  
\_\_\_\_\_  
Dwayne Wheatley, PE, LS (L.S. 3265)

  
\_\_\_\_\_  
Date

**SURVEYOR'S CERTIFICATION STATEMENT**

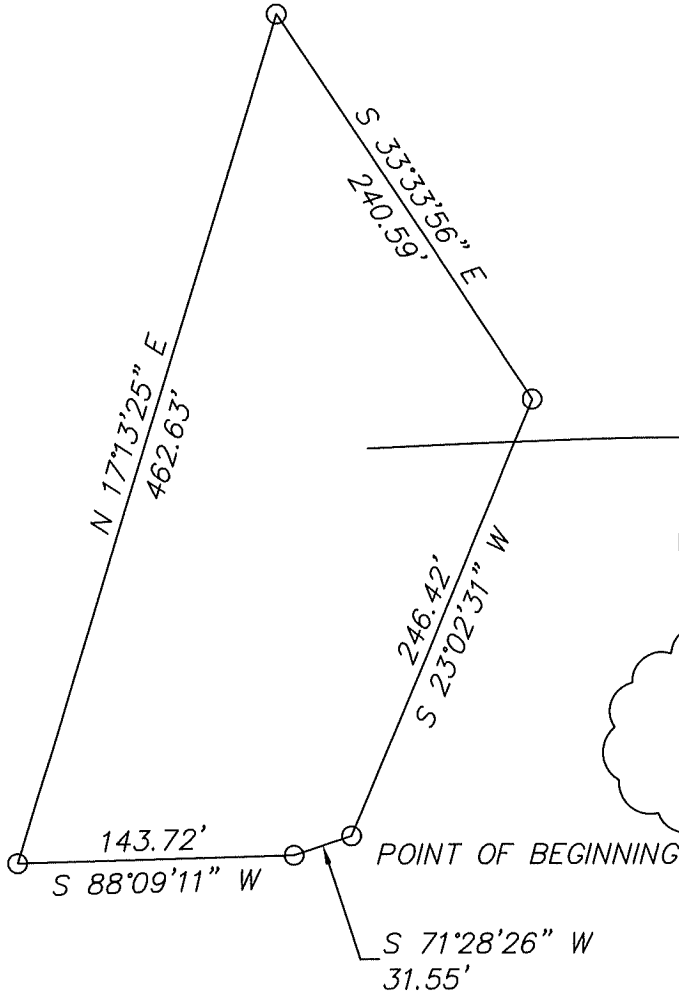
I hereby certify that this Plat has been drawn by me, or persons under my direct control and supervision, and reviewed by me. It is an accurate graphical representation delineating the limits of the subject property as per the ordinance listed below. This plat is not intended to comply with 201 KAR 15:150 and as such shall not be used in connection with the sale or transfer of land. This plat does not represent a boundary survey as performed by Abacus Engineering and Land Surveying, Inc. and shall not be recorded in the Madison County Clerk's Office.



ABACUS ENGINEERING & LAND SURVEYING, INC.

FIRM  
  
 OWNER

10/23/09  
 DATE



**RESOLUTION 09-13  
 (ORDINANCE 89-49)  
 TRACT 1  
 1.44 ACRES +/-**



**Abacus**  
 Engineering & Land Surveying  
 236 Boggs Lane, Suite 4  
 Richmond, KY 40475  
 P: (859) 625-1200 ~ F: (859) 625-1207

Project No.:	09-040
Scale:	1" : 100'
Drawn by:	JMR
Checked by:	DW
Date of Survey:	N/A
Date of Plat:	7MAY2009
Date of Revision:	20OCT2009

**"Not for Recording or Land Transfer"**  
**ANNEXATION PLAT for**  
**RESOLUTION No. 09-13 (Ord. No. 89-49), TRACT 1**  
**Prop. at NW Quad of Hwy 25 & Pace Ramsey**  
**Richmond, Madison County, Kentucky**



P.O. Box 1164, Richmond, Kentucky 40476  
236 Boggs Lane, Suite 4

---

*"Surveys you can count on."*


**LEGAL DESCRIPTION FOR  
RESOLUTION 09-13  
(ORDINANCE 89-49)  
TRACT 2**

**Note:** The following legal description is an accurate representation of the subject property as per listed ordinance and resolution. The legal description is based upon information provided to Abacus Engineering and Land Surveying, Inc., by the City of Richmond. This legal description is not intended to comply with 201 KAR 18:150 and as such shall not be used in connection with the sale or transfer of land.

A certain tract of land on the north side of a 24 foot pass way, approximately 575 feet west of U.S. Highway 25 south of Richmond in the Commonwealth of Kentucky, County of Madison consisting of 3.98 acres and described as follows:

The point of beginning being a steel pin in the north line of a 24 foot pass way, a corner to Art Pace, thence with said pass way line S88°02'05"W 114.29 feet to a steel pin and corner to Art Pace, thence with a new line dividing the lands of Pace N9°11'26"W 899.62 feet, to a steel pin in the west right-of-way line of L&N Railroad, thence leaving the line of Pace with the new line of L&N three (3) calls, S45°13'50"E 211.73 feet to a steel pin, thence S41°09'18"E 250.51 feet to a steel pin, thence S37°19'52"E 131.46 feet to a steel pin and new corner to Pace, thence leaving the line of the L&N Railroad with a new line dividing the lands of Pace S17°13'25"W 462.64 feet to a steel pin and the point of beginning containing 3.98 acres more or less.

  
\_\_\_\_\_  
Dwayne Wheatley, PE, LS (L.S. 3265)

  
\_\_\_\_\_  
Date

OVERSIZE MAP INCLUDED WITH  
SUBMISSION.

To research the map, contact the  
Office of Secretary of State  
or the County Clerk.