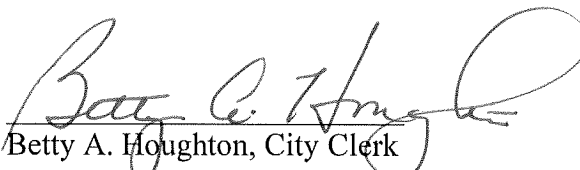


**CERTIFICATE OF CITY CLERK**

I, Betty A. Houghton, hereby certify that I am duly qualified and acting City Clerk of the City of Richmond, Kentucky, and that Ordinance 92-04 is a true and correct copy of this ordinance and was approved and adopted February 18, 1992 at a duly held City Commission meeting in accordance with all applicable requirements of Kentucky law, including KRS 61.810, 61.815, 61.820 and 61.825, that a quorum was present for this meeting and that said ordinance has not been modified, amended, revoked, or repealed and that same is now in full force and effect.

**IN TESTIMONY WHEREOF**, witness my signature as City Clerk and the official Seal of said City this the October 27, 2009.

  
Betty A. Houghton, City Clerk

(Seal of City)

RECEIVED AND FILED  
DATE Oct. 30, 2009

TREY GRAYSON  
SECRETARY OF STATE  
COMMONWEALTH OF KENTUCKY  
BY Kandice Adkins

ORDINANCE NO. 92-04

AN ORDINANCE OF THE CITY OF RICHMOND, KENTUCKY, ANNEXING TO THE CORPORATE LIMITS OF THE CITY OF RICHMOND 3.80 ACRES OF LAND ADJACENT TO THE CITY LIMITS.

WHEREAS, the owner of record and the unincorporated territory described below would like to have annexed to the corporate limits of the City of Richmond, Kentucky, 3.80 acres of land adjacent to the City Limits and described as follows:

A certain tract of land situated on the west side of Lexington Road, adjacent to the north city limits of Richmond, Kentucky, bounded and described as follows:

Beginning at a point in the east right of way line of U. S. Highway #25, Lexington Road, a corner, thence leaving said right of way line with the north line of South Bluegrass Junction, said line being the existing city limits line, S35°-57'-38"W 524.00 feet to a point and new corner with Jack Roe, et al, thence a new line with Roe, 3 calls N54°-02'-22"W 252.45 feet, N35°-57'-38"E 292.00 feet, N54°-02'-22"W 252.43 feet to a point in the line of Jerome Tudor, a corner, thence with Tudor's line N36°-12'-25"E 172.14 feet to a point in the right of way line of U. S. Highway #25, a corner, thence with said right of way line S61°-32'-57"E 458.01 feet to the beginning containing 3.80 acres.

WHEREAS, Ordinance No. 91-37 declairing intent to annex said tract of land pursuant to KRS 81A.410, 81A.420, and 100.209 was duly enacted on the 20th day of August, 1991, and the Richmond Planning and Zoning Commission after a public hearing on the 10th day of July, 1991, with due notice as required by law, has recommended a zoning classification and official map amendment of B-3 for annexation area.

NOW, THEREFORE BE IT ORDAINED by the Board of Commissioners of the City of Richmond that:

1. The unincorporated territory described above being adjacent and contiguous to the corporate limits of the City of Richmond, Kentucky, is hereby annexed to the boundaries of the City of Richmond, and is zoned B-3.

2. The Codes Enforcement Officer make the appropriate changes to the Official Zoning Map of the City of Richmond.

3. The City Clerk cause this ordinance to be published in accordance with the appropriate Kentucky Revised Statutes.

DATE OF FIRST READING: February 4, 1992

MOTION BY: Commissioner Strong

SECONDED BY: Commissioner Hacker

VOTE:	YES	NO
Commissioner Carrier	X	
Commissioner Hacker	X	
Commissioner Jones	X	
Commissioner Strong	X	
Mayor Durham	X	

DATE OF SECOND READING: February 18, 1992

MOTION BY: Commissioner Carrier

SECONDED BY: Commissioner Strong

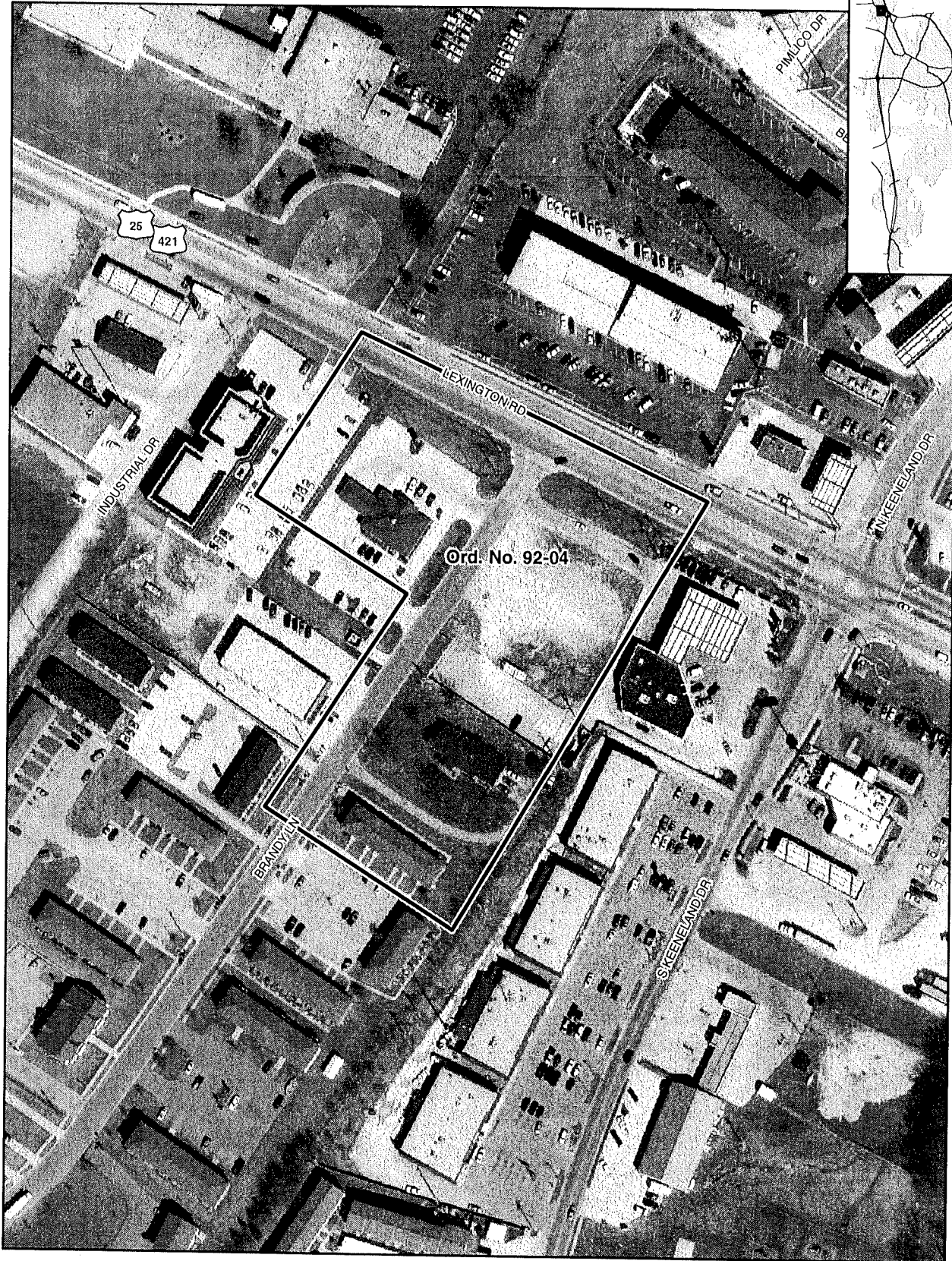
VOTE:	YES	NO
Commissioner Carrier	x	
Commissioner Hacker	x	
Commissioner Jones	x	
Commissioner Strong	x	
Mayor Durham	x	

*Ann L. Durham*  
MAYOR

ATTEST:

*Betty Harglem*  
CITY CLERK

# Annexation Map, Richmond, Kentucky



This map represents approximate annexation boundaries but is not a legal survey.

Richmond GIS  
May 25, 2005

Disclaimer: While the GIS Office strives to maintain accurate data, the City of Richmond does not guarantee its maps or data to be complete, accurate, current, or without error, nor does the City guarantee the fitness of the data for a particular use.