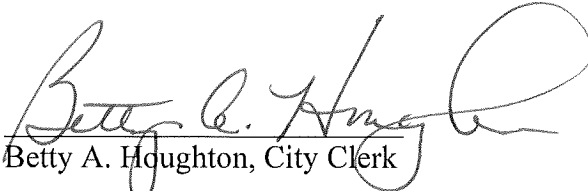


CERTIFICATE OF CITY CLERK

I, Betty A. Houghton, hereby certify that I am duly qualified and acting City Clerk of the City of Richmond, Kentucky, and that Ordinance 92-17 is a true and correct copy of this ordinance and was approved and adopted April 21, 1992 at a duly held City Commission meeting in accordance with all applicable requirements of Kentucky law, including KRS 61.810, 61.815, 61.820 and 61.825, that a quorum was present for this meeting and that said ordinance has not been modified, amended, revoked, or repealed and that same is now in full force and effect.

IN TESTIMONY WHEREOF, witness my signature as City Clerk and the official Seal of said City this the October 27, 2009.


Betty A. Houghton, City Clerk

(Seal of City)

RECEIVED AND FILED
DATE Oct. 30, 2009

TREY GRAYSON
SECRETARY OF STATE
COMMONWEALTH OF KENTUCKY
BY Gandie Adkins

ORDINANCE NO. 92-17

AN ORDINANCE OF THE CITY OF RICHMOND, KENTUCKY, ANNEXING TO THE CORPORATE LIMITS OF THE CITY OF RICHMOND 0.07 ACRES OF LAND ADJACENT TO THE CITY LIMITS.

WHEREAS, the owner of record and the unincorporated territory described below would like to have annexed to the corporate limits of the City of Richmond, Kentucky, 0.07 acres of land adjacent to the City Limits and described as follows:

Beginning at a post in the north line of Farrie Coy and the south line of City of Richmond Property, adjacent to Punkin Run Road, thence with the old line between Coy and the city property (Golf Course), 2 calls, S67°-01'-17"E 84.08 feet, S35°-16'-52"W 76.08 feet to a post and corner to Farrie Coy, thence a new line with Coy N19°-25'-13"W 100.66 feet to the beginning containing 0.07 acres.

This is a parcel of land subdivided off of the Farrie Coy Property.

WHEREAS, Ordinance No. 92-10 declaring intent to annex said tract of land pursuant to KRS 81A.410, 81A.420, and 100.209 was duly enacted on the 3rd day of March, 1992, and the Richmond Planning and Zoning Commission after a public hearing on the 12th day of February, 1992, with due notice as required by law, has recommended a zoning classification and official map amendment of R-1-A for annexation area.

NOW, THEREFORE BE IT ORDAINED by the Board of Commissioners of the City of Richmond that:

1. The unincorporated territory described above being adjacent and contiguous to the corporate limits of the City of Richmond, Kentucky, is hereby annexed to the boundaries of the City of Richmond.
2. The Codes Enforcement Officer make the appropriate changes to the Official Zoning Map of hte City of Richmond.
3. The City Clerk cause this Ordinance to be published in accordance with the appropriate Kentucky Revised Statutes.

DATE OF FIRST READING: April 7, 1992

MOTION BY: Commissioner Strong

SECONDED BY: Commissioner Hacker

Vote:	Yes	No
Commissioner Hacker	x	
Commissioner Jones		Absent
Commissioner Strong	x	
Commissioner Tobler	x	
Mayor Durham	x	

DATE OF SECOND READING: April 21, 1992

MOTION BY: Commissioner Jones

SECONDED BY: Commissioner Strong

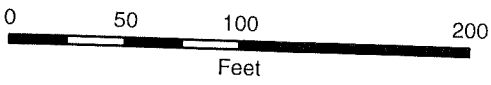
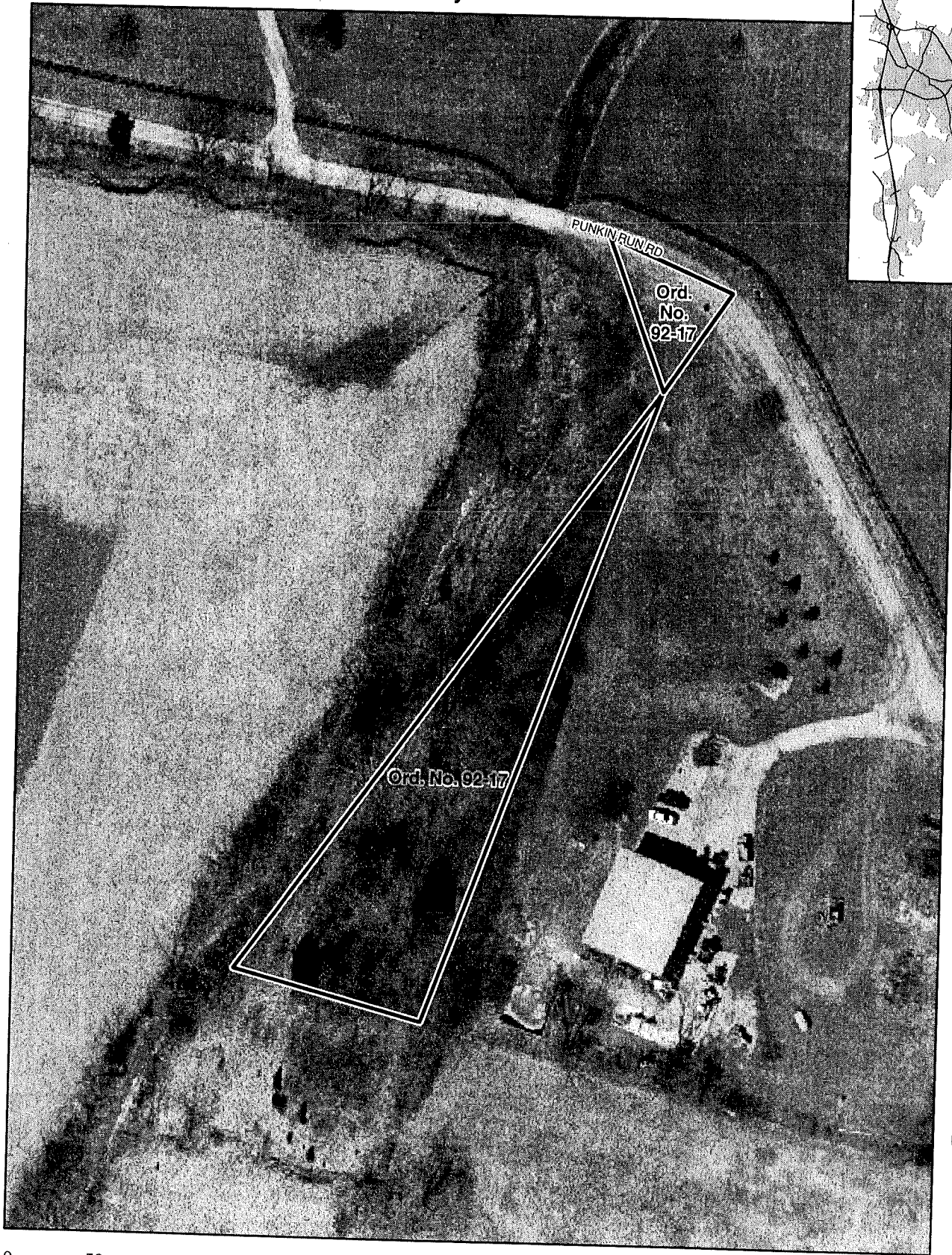
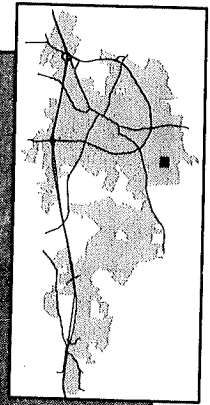
Vote:	Yes	No
Commissioner Hacker	x	
Commissioner Jones	x	
Commissioner Strong	x	
Commissioner Tobler	x	
Mayor Durham	x	

Ann & Durham
Mayor

Attest:

Betty Houghton
City Clerk

Annexation Map, Richmond, Kentucky



This map represents approximate annexation boundaries but is not a legal survey.

Richmond GIS
May 25, 2005



Disclaimer: While the GIS Office strives to maintain accurate data, the City of Richmond does not guarantee its maps or data to be complete, accurate, current, or without error, nor does the City guarantee the fitness of the data for a particular use.