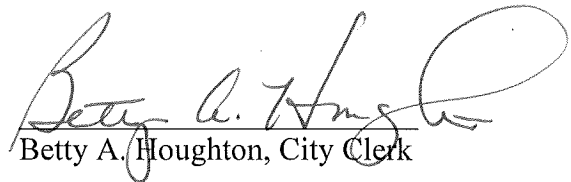


**CERTIFICATE OF CITY CLERK**

I, Betty A. Houghton, hereby certify that I am duly qualified and acting City Clerk of the City of Richmond, Kentucky, and that Ordinance 92-18 is a true and correct copy of this ordinance and was approved and adopted April 21, 1992 at a duly held City Commission meeting in accordance with all applicable requirements of Kentucky law, including KRS 61.810, 61.815, 61.820 and 61.825, that a quorum was present for this meeting and that said ordinance has not been modified, amended, revoked, or repealed and that same is now in full force and effect.

**IN TESTIMONY WHEREOF**, witness my signature as City Clerk and the official Seal of said City this the October 27, 2009.

  
Betty A. Houghton, City Clerk

(Seal of City)

RECEIVED AND FILED  
DATE Oct 30, 2009

TREY GRAYSON  
SECRETARY OF STATE  
COMMONWEALTH OF KENTUCKY  
BY Kandice Adkinson

ORDINANCE NO. 92-18

**AN ORDINANCE OF THE CITY OF RICHMOND, KENTUCKY, ANNEXING TO THE CORPORATE LIMITS OF THE CITY OF RICHMOND 8.42 ACRES OF LAND ADJACENT TO THE CITY LIMITS.**

**WHEREAS**, the owners of record and the unincorporated territory described below would like to have annexed to the corporate limits of the City of Richmond, Kentucky, 8.42 acres of land adjacent to the City Limits and described as follows:

Beginning at a point in the west line of Tom Harper et al, said point being 524.00 feet southwest of the right of way line of U. S. Highway #25, Lexington Road, thence with Harper's line, existing city limits line, S35°-57'-38"W 419.00 feet to a point and new corner to Jerome Tudor, thence a new line with Tudor N54°-02'-22"W 580.51 feet to a point and corner to Raymond Anderson, thence with Anderson's line N35°-51'-09"E 916.68 feet to a point in the center of U. S. Highway #25, Lexington Road, a corner, thence with the center line of U. S. Highway #25 S61°-32'-57"E 129.49 feet, to a point and corner, thence leaving said center line with Rob McGrath et al, 2 call, S36°-13'-25"E 222.61 feet, S54°-02'-22"E 202.43 feet to a point in the west line of Brandy Lane, a corner, thence with the west line of Brandy Lane S35°-57'-38"W 292.00 feet to an iron pin and corner to Jerome Tudor thence with Tudor's line S54°-02'-22"E 252.45 feet to the beginning, containing 8.42 acres.

This is a parcel of land subdivided off of the Jerome Tudor and Rob McGrath Property.

**WHEREAS**, Ordinance No. 92-11 declaring intent to annex said tract of land pursuant to KRS 81A.410, 81A.420, and 100.209 was duly enacted on the 3rd day of March, 1992, and the Richmond Planning and Zoning Commission after a public hearing on the 12th day of February, 1992, with due notice as required by law, has recommended a zoning classification and official map amendment of B-3 for annexation area.

**NOW, THEREFORE BE IT ORDAINED** by the Board of Commissioners of the City of Richmond that:

1. The unincorporated territory described above being adjacent and contiguous to the corporate limits of the City of Richmond, Kentucky, is hereby annexed to the boundaries of the City of Richmond.
2. The Codes Enforcement Officer make the appropriate changes to the Official Zoning Map of the City of Richmond.
3. The City Clerk cause this Ordinance to be published in accordance with the appropriate Kentucky Revised Statutes.

**DATE OF FIRST READING:** April 7, 1992

**MOTION BY:** Commissioner Tobler

**SECONDED BY:** Commissioner Strong

<b>Vote:</b>	<b>Yes</b>	<b>No</b>
<b>Commissioner Hacker</b>	x	
<b>Commissioner Jones</b>		Absent

	YES	NO
Commissioner Strong	x	
Commissioner Tobler	x	
Mayor Durham	x	

DATE OF SECOND READING: April 21, 1992

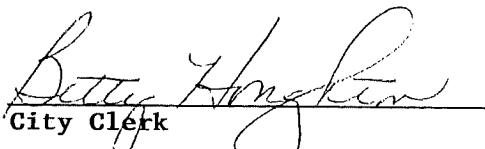
MOTION BY: Commissioner Tobler

SECONDED BY: Commissioner Hacker

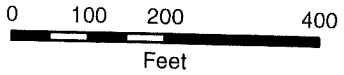
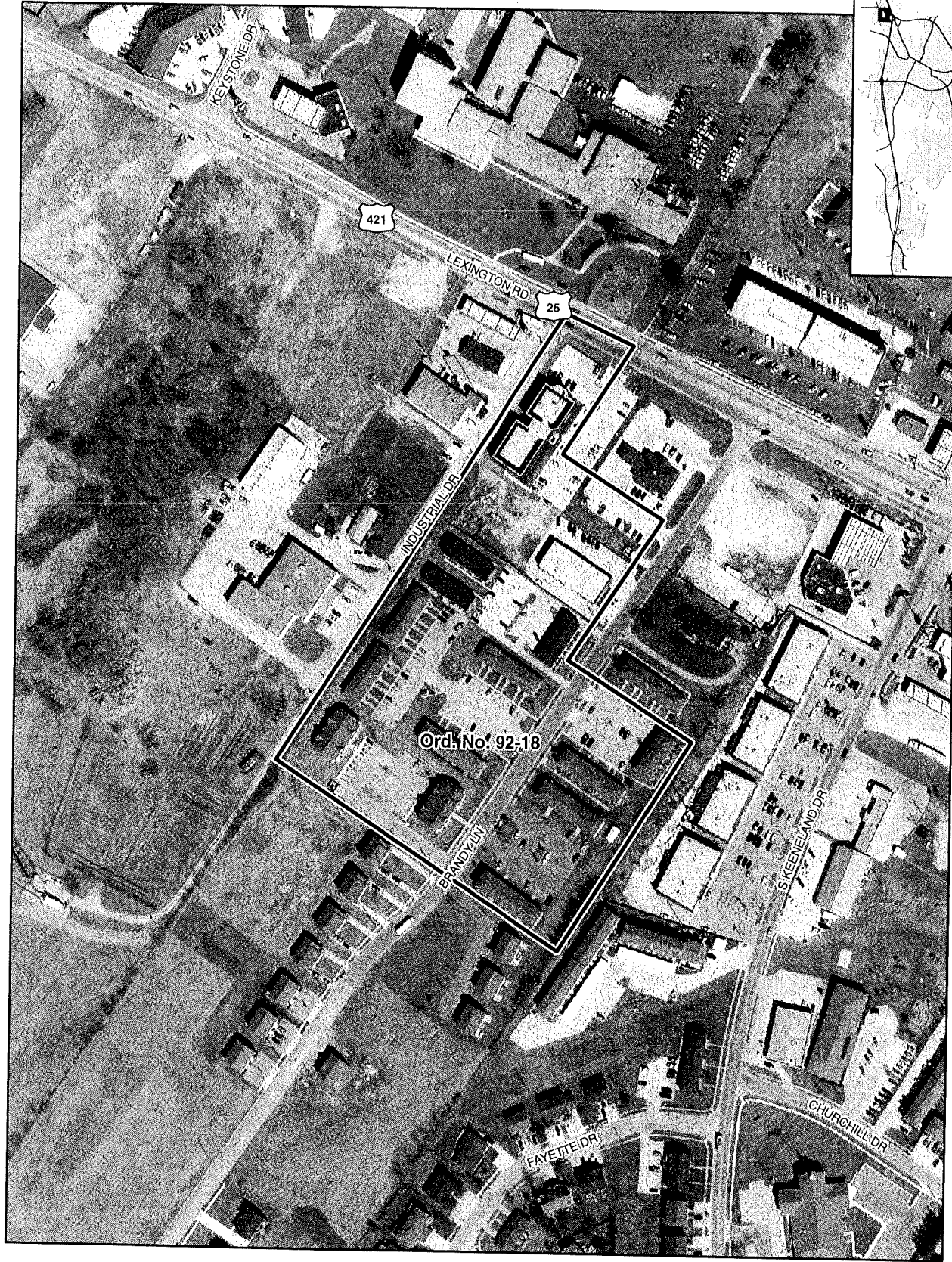
Vote:	Yes	No
Commissioner Hacker	x	
Commissioner Jones	x	
Commissioner Strong	x	
Commissioner Tobler	x	
Mayor Durham	x	

  
\_\_\_\_\_  
Mayor

Attest:

  
\_\_\_\_\_  
City Clerk

# Annexation Map, Richmond, Kentucky



This map represents approximate annexation boundaries but is not a legal survey.

Richmond GIS  
May 25, 2005

Disclaimer: While the GIS Office strives to maintain accurate data, the City of Richmond does not guarantee its maps or data to be complete, accurate, current, or without error, nor does the City guarantee the fitness of the data for a particular use.

OVERSIZE MAP INCLUDED WITH  
SUBMISSION.

To research the map, contact the  
Office of Secretary of State  
or the County Clerk.