


**CERTIFICATE OF CITY CLERK**

I, Betty A. Houghton, hereby certify that I am duly qualified and acting City Clerk of the City of Richmond, Kentucky, and that Ordinance 95-68 is a true and correct copy of this ordinance and was approved and adopted January 2, 1996 at a duly held City Commission meeting in accordance with all applicable requirements of Kentucky law, including KRS 61.810, 61.815, 61.820 and 61.825, that a quorum was present for this meeting and that said ordinance has not been modified, amended, revoked, or repealed and that same is now in full force and effect.

**IN TESTIMONY WHEREOF**, witness my signature as City Clerk and the official Seal of said City this the October 27, 2009.

  
Betty A. Houghton, City Clerk

(Seal of City)

RECEIVED AND FILED  
DATE Oct 30, 2009

TREY GRAYSON  
SECRETARY OF STATE  
COMMONWEALTH OF KENTUCKY  
BY Kandice Ledford

ORDINANCE NO. 95-68

**AN ORDINANCE OF THE CITY OF RICHMOND, KENTUCKY, ANNEXING  
1.04 ACRES OF LAND ADJACENT TO THE CITY LIMITS.**

**WHEREAS**, the sole owner of record and the unincorporated territory described below would like to have annexed to the corporate limits of the City of Richmond, Kentucky 1.04 acres of land adjacent to the City Limits and described as follows:

A certain tract of land situated on the east side of Four Mile Road in Madison County, Kentucky, described by survey of C.M.W. Inc. as follows:

Beginning at a post in the east line of Four Mile Road, said post being North 24 degrees 30 minutes East 1084.80 feet from the southeast corner of Harold Richardson property, a corner to Harold Richardson, thence with the east line of Four Mile Road North 24 degrees 55 minutes East 139.60 feet to a post and corner to Harold Richardson, thence leaving Four Mile Road with Richardson, four (4) falls, South 72 degrees 35 minutes East 363.80 feet, South 12 degrees 40 minutes West 138.50 feet, North 72 degrees 55 minutes West 121.00 feet, North 72 degrees 35 minutes West 276.90 feet to the beginning, containing 1.2 acres. Except it shall not contain that tract of land beginning at a point 14.12 feet right of Four Mile Road station 54+23.71; thence South 76 degrees 49 minutes 52 seconds East, 67.53 feet to a point 45.00 feet left of Four Mile Road station 53+89.91; thence South 34 degrees 13 minutes 04 seconds West, 149.30 feet to a point 45.00 feet left of Four Mile Road station 55+55.57; thence North 77 degrees 15 minutes 56 seconds West, 30.06 feet to a point 15.51 feet left of Four Mile Road station 55+61.79; thence North 19 degrees 46 minutes 16 seconds East, 140.50 feet to the point of beginning and containing 0.156 acres, said land having been condemned by the Commonwealth of Kentucky Transportation Cabinet under KRS 416.540-416.680 on May 18, 1994.

**WHEREAS**, this annexation meets the requirements of KRS 81A.410, and the sole owner of record of such land has consented in writing to the annexation pursuant to KRS 81A.412, and,

**WHEREAS**, it is declared pursuant to KRS 81A.420 that it is desirable to annex this unincorporated contiguous territory and the Richmond Planning and Zoning Commission conducted a Public Hearing pursuant to KRS 100.209 for its recommendation as to zone classifications and any zoning map amendments.

NOW, THEREFORE BE IT ORDAINED by the Board of Commissioners of the City of Richmond, that:

1. The unincorporated territory described above being adjacent and contiguous to the corporate limits of the City of Richmond, Kentucky, is hereby annexed to the boundaries of the City of Richmond.

2. The Richmond Planning and Zoning Commission conducted a Public Hearing pursuant to KRS 100.209 on December 13, 1995, and recommended that the zoning classification of the subject property be B-3.

3. The City Clerk cause this Ordinance to be published in accordance with the appropriate Kentucky Revised Statutes.

DATE OF FIRST READING: December 19, 1995

MOTION BY: Commissioner Jones

SECONDED BY: Commissioner Robbins


VOTE:	YES	NO
Commissioner Hacker	x	
Commissioner Jones	x	
Commissioner Robbins	x	
Commissioner Tobler	x	
Mayor Durham	x	

DATE OF SECONDED READING: January 2, 1996

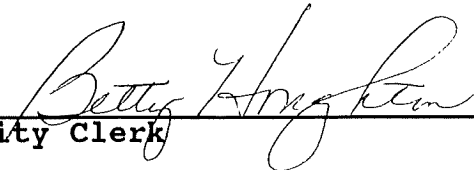
MOTION BY: Commissioner Tobler

SECONDED BY: Commissioner Robbins

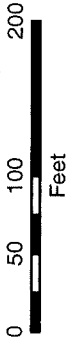
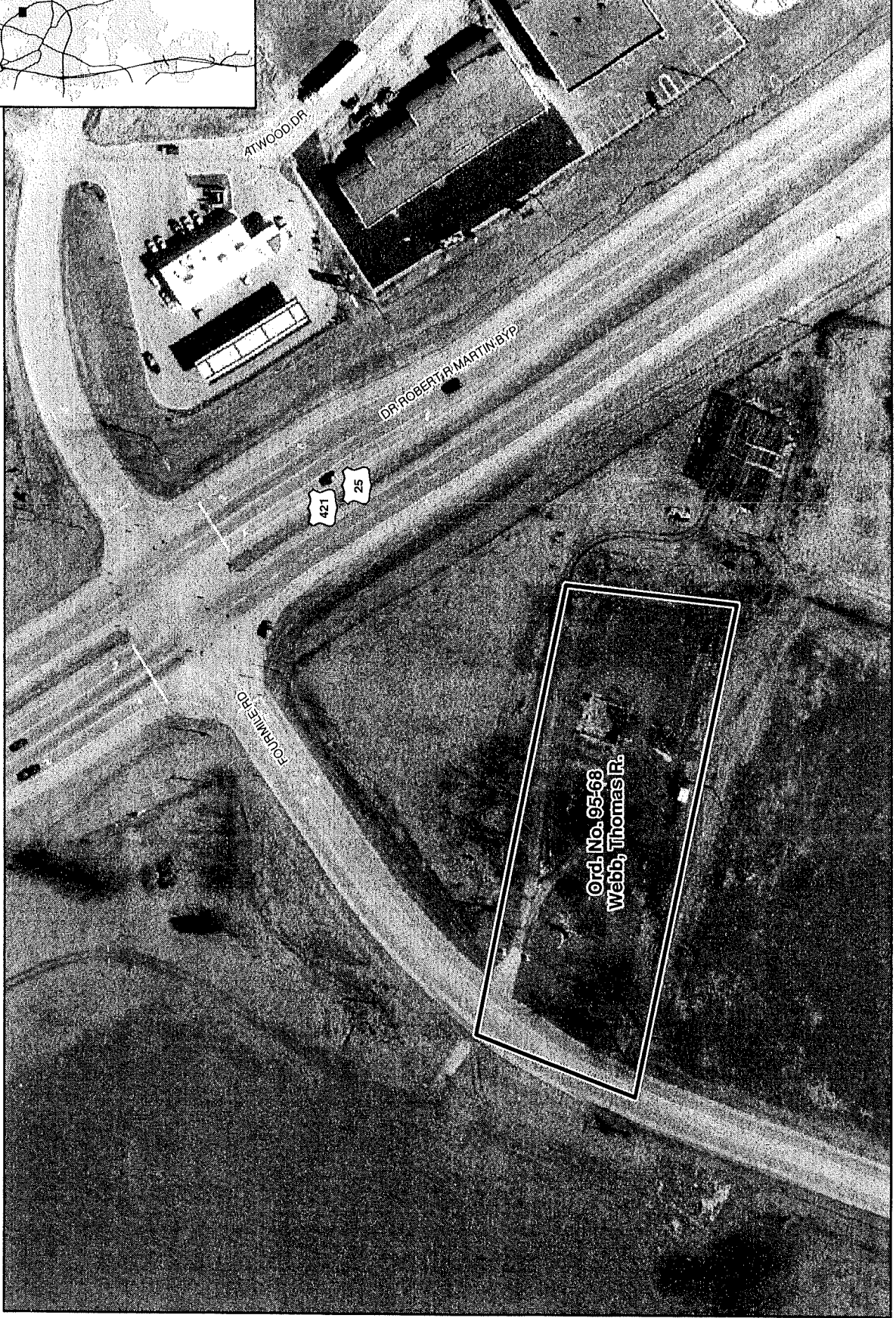
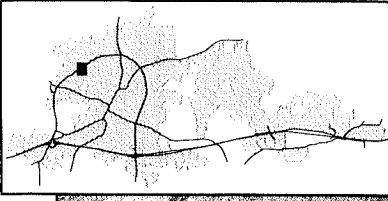
VOTE:	YES	NO
Commissioner Hacker	x	
Commissioner Jones	Absent	
Commissioner Robbins	x	
Commissioner Tobler	x	
Mayor Durham	x	

  
\_\_\_\_\_  
Mayor

Attest:

  
\_\_\_\_\_  
City Clerk

**Annexation Map, Richmond, Kentucky**



This map represents approximate annexation boundaries but is not a legal survey.

Disclaimer: While the GIS Office strives to maintain accurate data, the City of Richmond does not guarantee its maps or data to be complete, accurate, current, or without error, nor does the City guarantee the fitness of the data for a particular use.

Richmond GIS  
May 24, 2005