


CERTIFICATE OF CITY CLERK

I, Betty A. Houghton, hereby certify that I am duly qualified and acting City Clerk of the City of Richmond, Kentucky, and that Ordinance 96-45 is a true and correct copy of this ordinance and was approved and adopted June 18, 1996 at a duly held City Commission meeting in accordance with all applicable requirements of Kentucky law, including KRS 61.810, 61.815, 61.820 and 61.825, that a quorum was present for this meeting and that said ordinance has not been modified, amended, revoked, or repealed and that same is now in full force and effect.

IN TESTIMONY WHEREOF, witness my signature as City Clerk and the official Seal of said City this the October 27, 2009.


Betty A. Houghton, City Clerk

(Seal of City)

RECEIVED AND FILED
DATE Oct 30, 2009

TREY GRAYSON
SECRETARY OF STATE
COMMONWEALTH OF KENTUCKY
BY Kandie Adkins

ORDINANCE NO. 96-45

AN ORDINANCE OF THE CITY OF RICHMOND, KENTUCKY ANNEXING APPROXIMATELY 86.25 ACRES OF LAND ADJACENT TO THE CITY LIMITS.

WHEREAS, the owner of record of the unincorporated territory described below would like to have annexed to the incorporated area of the City of Richmond, Kentucky, 86.25 acres of land adjacent to the City Limits, and

WHEREAS, the sole owner/owners of the land being proposed for annexation have by letter dated April 8, 1996 applied for voluntary annexation and requested their property be zoned AG and B-3, and

WHEREAS, it is the intent of the Richmond City Board of Commissioners to annex this land described below as per annexation procedures established by Ordinance No. 96-17 adopted February 20, 1996.

Being known as the Jerre Reams and Tommy Reams property and lying adjacent to Barnes Mill Road in Madison County, Kentucky and being more particularly described as follows:

Tract 1

Being the property of Jerre Reams and Tommy Reams recorded in Deed Book 328 Page 69 and Will Book 25 Page 701 lying on Barnes Mill Road and Goggins Lane in Richmond, Kentucky and being more particularly described as follows:

Beginning at the common corner of John McClellan with Barnes Mill Road and with same N85°E 98.71 feet to the common corner with Oldham, Roberts and Powell, Inc. and leaving Barnes Mill with same N08°25'E 328.40 feet, N86°45'E 405.30 feet to a common corner with Cornelison and continuing with same N02°33'W 239.98 feet, N87°27'E 1069.04 feet to a common corner with Rozen-Broeman Farm and continuing with same N04°W 1880.50 feet to a common corner with Welanetz and continuing with same, S27°W 798.60 feet, S48°W 402.60 feet; thence with a new line between the B-3 zone and the AG zone property S40°52'12"W 1304.66 feet, S04°13'18"E 404.64 feet to the northeast corner of McClellan and with same S05°30'E 208.72 feet to the point of beginning and containing 37.28 acres more or less to be annexed into the City and zoned B-3.

Tract 2

Being the property of Jerre Reams and Tommy Reams recorded in Deed Book 328 Page 69 and Will Book 25 Page 701 lying on Barnes Mill Road and Goggins Lane in Richmond, Kentucky and being more particularly described as follows:

Beginning at the intersection of the right of way of Barnes Mill Road and with the right of way of said road S76°15'E 371 feet; thence N20°E 208 feet with Robert Childress and continuing with same S73°22'E 209 feet, S20°W 208 feet to the right of way of Barnes Mill Road thence with same S76°15'E 260.91 feet, N85°E 360.82 feet to the common corner with John McClellan and continuing with same N05°30'W 208.72 feet, N84°30'E 208.72 feet; thence a new line between the B-3 zone and the AG zone N04°13'18"W 404.64 feet, N40°52'12"E 1304.66 feet to a common corner with Welanetz and continuing with same N61°W 928.01 feet to a common corner with Potts and continuing with same, S35°34'W 180 feet, N59°30'W 243 feet to Goggins Lane and with same S32°30'54"W 215.59 feet to the common corner with Flaherty and with same S56°25'35"E 251.35 feet, S12°58'E 220.59 feet to a corner with Whitehouse and continuing with same S57°03'W 265.20 feet, N50°30'W 242 feet to the right of way of Goggins Lane, thence with same S32°30'54"W 962.47 feet to a common corner with Abrams and continuing with same S64°E 210 feet, S37°30'W 210 feet, N64°W 210 feet to the right of way of Goggins Lane and continuing with same S32°30'54"W 45.51 feet, S12°W 84.15 feet, S26°15'W 242.55 feet to the point of beginning and containing 48.97 acres more or less to be annexed into the City of Richmond and zoned as AG.

This description is from a drawing of the deed and is without benefit of survey.

WHEREAS, the proposed annexation meets the requirements of KRS 81A.410 and the owner of record of such land has consented in writing to the annexation pursuant to KRS 81A.412 and

WHEREAS, it is declared pursuant to KRS 81A.420 that it is desirable to annex this unincorporated territory and the Richmond Planning and Zoning Commission should conduct a Public Hearing pursuant to KRS 100.209 for its recommendation as to zone classifications and any zoning map amendments.

NOW, THEREFORE BE IT ORDAINED by the Board of Commissioners of the City of Richmond that:

SECTION I

The unincorporated territory described above being adjacent and contiguous to the corporate limits of the City of Richmond, Kentucky is hereby annexed to the boundaries of the City of Richmond.

SECTION II

The Richmond Planning and Zoning Commission conducted a Public Hearing pursuant to KRS 100.209 on May 22, 1996, and recommended that the zoning classifications of subject property.

SECTION III

The City Clerk cause this Ordinance to be published in accordance with the appropriate Kentucky Revised Statutes.

Date of First Reading: June 4, 1996

Motion By: Commissioner Robbins

Seconded By: Commissioner Tobler

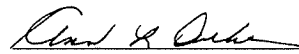
Vote:	Yes	No
Commissioner Hacker	x	
Commissioner Jones	x	
Commissioner Robbins	x	
Commissioner Tobler	x	
Mayor Durham		absent

Date of Second Reading: June 18, 1996

Motion By: Commissioner Tobler

Seconded By: Commissioner Robbins

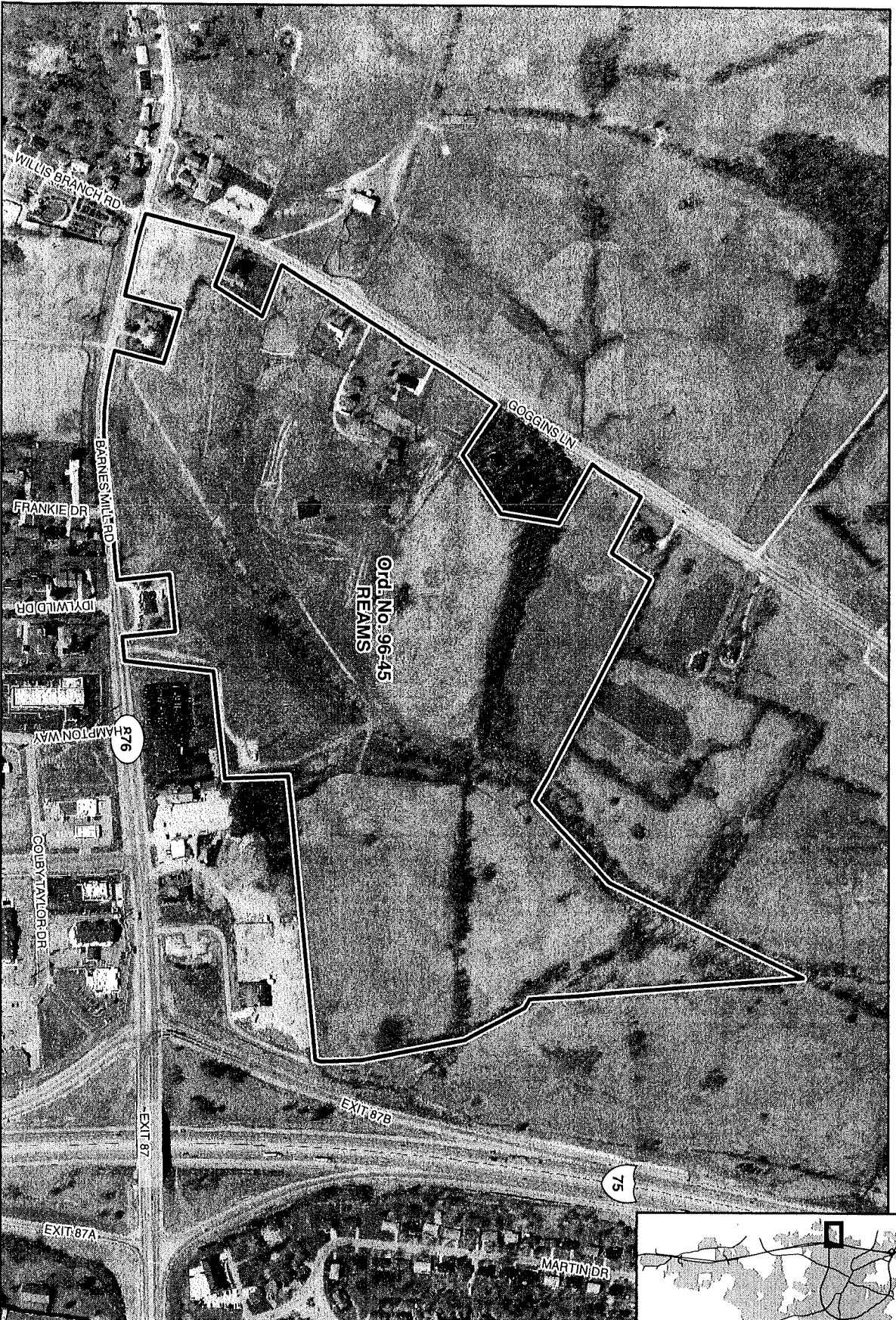
Vote:	Yes	No
Commissioner Hacker	x	
Commissioner Jones	x	
Commissioner Robbins	x	
Commissioner Tobler	x	
Mayor Durham		absent


Mayor

Attest:


City Clerk

Annexation Map, Richmond, Kentucky



This map represents approximate annexation boundaries but is not a legal survey.

Disclaimer: While the GIS Office strives to maintain accurate data, the City of Richmond does not guarantee its maps or data to be complete, accurate, current, or without error, nor does the City guarantee the fitness of the data for a particular use.

Richmond GIS
May 24, 2005

OVERSIZE MAP INCLUDED WITH
SUBMISSION.

To research the map, contact the
Office of Secretary of State
or the County Clerk.