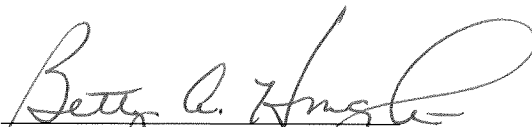


CERTIFICATE OF CITY CLERK

I, Betty A. Houghton, hereby certify that I am duly qualified and acting City Clerk of the City of Richmond, Kentucky, and that Ordinance 96-48 is a true and correct copy of this ordinance and was approved and adopted June 18, 1996 at a duly held City Commission meeting in accordance with all applicable requirements of Kentucky law, including KRS 61.810, 61.815, 61.820 and 61.825, that a quorum was present for this meeting and that said ordinance has not been modified, amended, revoked, or repealed and that same is now in full force and effect.

IN TESTIMONY WHEREOF, witness my signature as City Clerk and the official Seal of said City this the October 27, 2009.


Betty A. Houghton, City Clerk

(Seal of City)

RECEIVED AND FILED
DATE Oct 30, 2009

TREY GRAYSON
SECRETARY OF STATE
COMMONWEALTH OF KENTUCKY
BY Kandice Addison

ORDINANCE NO. 96-48

AN ORDINANCE OF THE CITY OF RICHMOND, KENTUCKY, ANNEXING 3.23 ACRES OF LAND ADJACENT TO THE CITY LIMITS.

WHEREAS, the owner of record of the unincorporated territory described below would like to have annexed to the incorporated area of the City of Richmond, Kentucky, 3.23 acres of land adjacent to the City Limits and,

WHEREAS, the sole owner/owners of the land being proposed for annexation have by letter dated March 18, 1996, applied for voluntary annexation and requested their property be zoned B-3.

WHEREAS, it is the intent of the Richmond City Board of Commissioners to annex this land described below as per annexation procedures established by Ordinance Number 96-17, adopted February 20, 1996.

Being the property of Oldham, Roberts and Powell, Inc.

A certain tract of land situated on the north side of Barnes Mill Road, approximately 1300 feet west of Interstate Highway 75, in Madison County, Kentucky, bounded and described as follows:

Beginning at a post in the north right of way line of Barnes Mill Road, a corner to Kirksville Water Association, Inc., thence leaving Barnes Mill Road with the land of the Kirksville Water Associations, Inc., N3°-27'W 20.0 feet to a post and corner to Kirksville Water Association, Inc., thence continuing with their line N86°-45'E 30.0 feet to a post and corner to Earl Cornelison, thence with Cornelison's line N3°-27'W 301.5 feet to an iron pin and corner to James Farley, thence a new line with Farley S86°-45'W 405.3 feet to an iron pin and new corner to Farley, thence continuing a new line with Farley S8°-25'W 328.4 feet to an iron pin in the north right of way line of Barnes Mill Road, a corner, thence with the north right of way line of Barnes Mill N86°-45'E 442.8 feet to the beginning containing 3.23 acres.

WHEREAS, the proposed annexation meets the requirements of KRS 81A.410, and the owner of record of such land has consented in writing to the annexation pursuant to KRS 81A.412, and

WHEREAS, it is declared pursuant to KRS 81A.420 that it is desirable to annex this unincorporated territory and the Richmond Planning and Zoning Commission conducted a Public

Hearing pursuant to KRS 100.209 for its recommendation as to zone classifications and any zoning map amendments.

NOW, THEREFORE BE IT ORDAINED by the Board of Commissioners of the City of Richmond that:

1. The unincorporated territory described above being adjacent and contiguous to the corporate limits of the City of Richmond, Kentucky, is hereby annexed to the boundaries of the City of Richmond.

2. The Richmond Planning and Zoning Commission will conduct a Public Hearing pursuant to KRS. 100.209 on May 22, 1996, and recommended that the zoning classifications of subject property be B-3.

3. The City Clerk cause this Ordinance to be published in accordance with the appropriate Kentucky Revised Statutes.

DATE OF FIRST READING: June 4, 1996

MOTION BY: Commisisoner Robbins

SECONDED BY: Commissiner Tobler

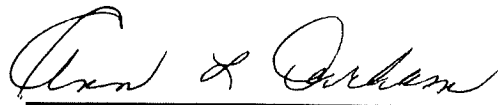
VOTE:	YES	NO
Commissioner Hacker	x	
Commissioner Jones	x	
Commissioner Robbins	x	
Commissioner Tobler	x	
Mayor Durham	absent	

DATE OF SECOND READING: June 18, 1996

MOTION BY: Commissioner Tobler

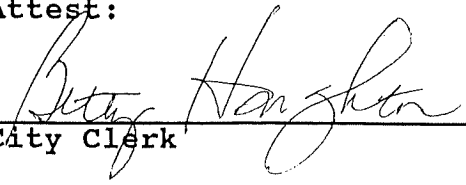
SECONDED BY: Commissioner Robbins

VOTE:	YES	NO
Commissioner Hacker	x	
Commissioner Jones	x	
Commissioner Robbins	x	
Commissioner Tobler	x	
Mayor Durham	absent	



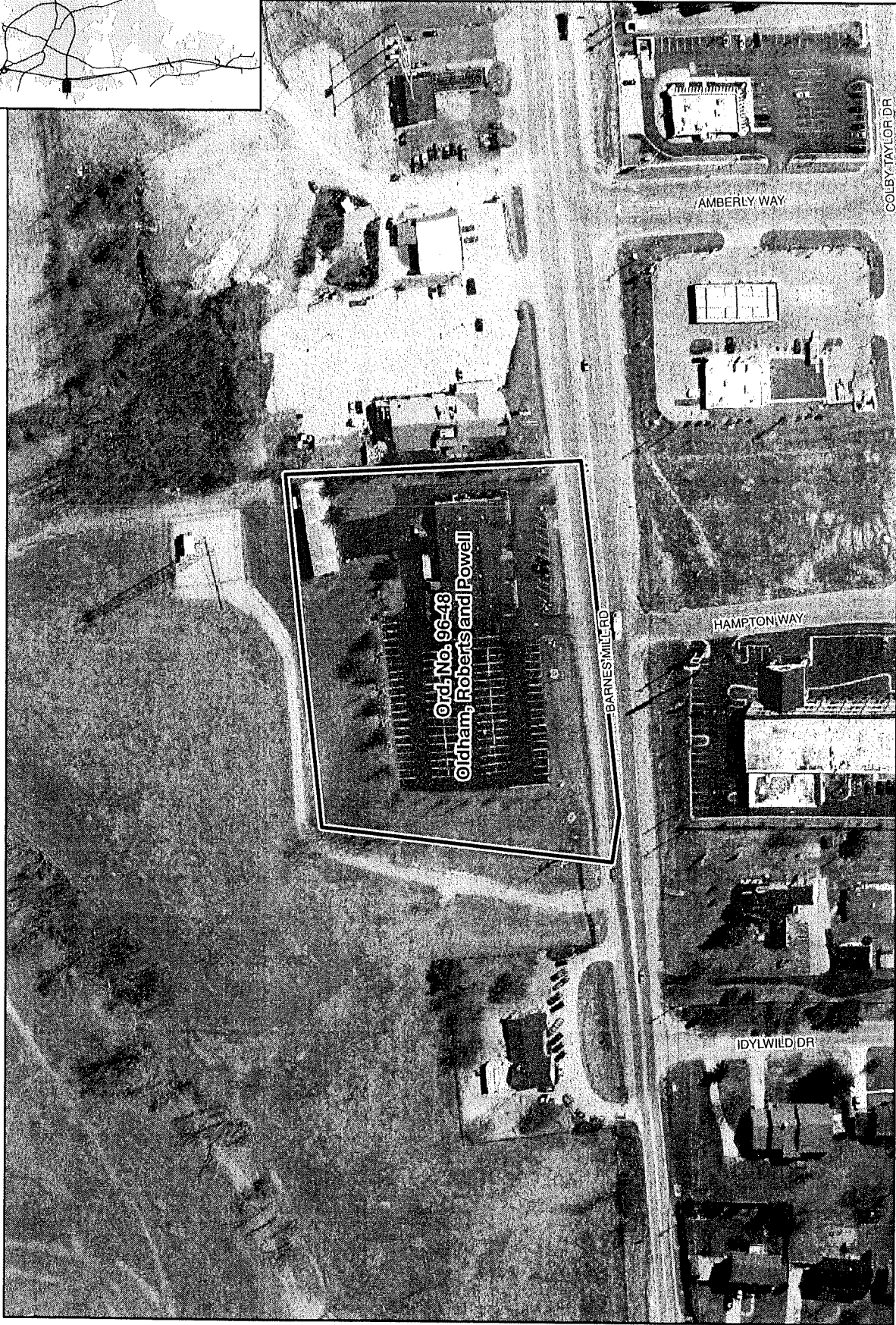
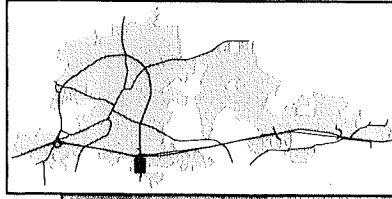
Mayor

Attest:



City Clerk

Annexation Map, Richmond, Kentucky



This map represents approximate annexation boundaries but is not a legal survey.

Disclaimer: While the GIS Office strives to maintain accurate data, the City of Richmond does not guarantee its maps or data to be complete, accurate, current, or without error, nor does the City guarantee the fitness of the data for a particular use.

Richmond GIS
May 24, 2005