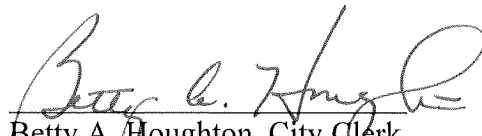


CERTIFICATE OF CITY CLERK

I, Betty A. Houghton, hereby certify that I am duly qualified and acting City Clerk of the City of Richmond, Kentucky, and that Ordinance 96-49 is a true and correct copy of this ordinance and was approved and adopted June 18, 1996 at a duly held City Commission meeting in accordance with all applicable requirements of Kentucky law, including KRS 61.810, 61.815, 61.820 and 61.825, that a quorum was present for this meeting and that said ordinance has not been modified, amended, revoked, or repealed and that same is now in full force and effect.

IN TESTIMONY WHEREOF, witness my signature as City Clerk and the official Seal of said City this the October 27, 2009.


Betty A. Houghton, City Clerk

(Seal of City)

RECEIVED AND FILED
DATE Oct. 30, 2009

TREY GRAYSON
SECRETARY OF STATE
COMMONWEALTH OF KENTUCKY
BY Kandice Adkins

ORDINANCE NO. 96-49

AN ORDINANCE OF THE CITY OF RICHMOND, KENTUCKY, ANNEXING APPROXIMATELY 345.5 ACRES OF LAND ADJACENT TO THE CITY LIMITS.

WHEREAS, the owner of record of the unincorporated territory described below would like to have annexed to the incorporated area of the City of Richmond, Kentucky, approximately 345.5 acres of land adjacent to the City Limits and,

WHEREAS, the sole owner/owners of the land being proposed for annexation have by letter dated March 8, 1996, applied for voluntary annexation and requested their property be zoned AG.

WHEREAS, it is the intent of the Richmond City Board of Commissioners to annex this land described below as per annexation procedure established by Ordinance Number 96-17, adopted February 20, 1996.

Being the property known as the Peyton-Harrison Trust and lying adjacent to I-75 and US Highway 25 in Madison County Kentucky and being more particularly described as follows:

Tract 1

Beginning at the common corner with Shirley Durbin at the right of way of I-75; thence with Durbin N24° E 118.6', N23°24'E 608.35', N23°08'E 1078.02' to a common corner with Deatherage and Hortman thence with same S67°23'E 841.02', S66°39'E 1077.59', S75°05'E 401.13', S67°52'E 593.8' to a common corner with McCord and continuing with same S25°05'W 2896.88', S66°17'E 398.08', S66°56'E 1478.8' to the common corner with the Pearl Wight Burnam Estates and continuing with same S25° W 1415.73', S25°07'W 986.13', S26°46'W 311.07', S28°28'W 846.53 feet to the new Richmond By Pass and with same N3°49'33"W 315.54' to the I-75 right of way and with same N19°32'W 3898.32', N70°28'E 40', N19°32'W 330', S70°28'W 40', N19°32'W 1957.78 to the point of beginning and containing approximately 345 acres more or less.

Tract 2

Being the portion of property separated by the Richmond By Pass and more particularly described as follows:

Beginning at the intersection of the right of way of the By Pass and the line of subject property thence; S28°58'W 57.97', N61°02'W 12', S28° W 25', S19°08'W 90', S28°58'W 42',

N19°32'W 200.45', S3°49'33"E 315.54 feet and containing .5 acres more or less.

WHEREAS, the proposed annexation meets the requirements of KRS 81A.410, and the owner of record of such land has consented in writing to the annexation pursuant to KRS 81A.412, and

WHEREAS, it is declared pursuant to KRS 81A.420 that it is desirable to annex this unincorporated territory and the Richmond Planning and Zoning Commission conducted a Public Hearing pursuant to KRS 100.209 for its recommendation as to zone classifications and any zoning map amendments.

NOW, THEREFORE BE IT ORDAINED by the Board of Commissioners of the City of Richmond that:

SECTION I

The unincorporated territory described above being adjacent and contiguous to the corporate limits of the City of Richmond, Kentucky, is hereby annexed to the boundaries of the City of Richmond.

SECTION II

The Richmond Planning and Zoning Commission will conduct a Public Hearing pursuant to KRS. 100.209 on May 22, 1996, and recommended that the zoning classifications of subject property br AG.

SECTION III

The City Clerk cause this Ordinance to be published in accordance with the appropriate Kentucky Revised Statutes.

DATE OF FIRST READING: June 4, 1996

MOTION BY: Commissioner Robbins

SECONDED BY: Commissioner Tobler

VOTE:	YES	NO
Commissioner Hacker	x	
Commissioner Jones	x	
Commissioner Robbins	x	
Commissioner Tobler	x	
Mayor Durham	absent	

DATE OF SECOND READING: June 18, 1996

MOTION BY: Commissioner Tobler

SECONDED BY: Commissioner Robbins

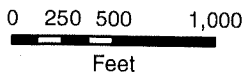
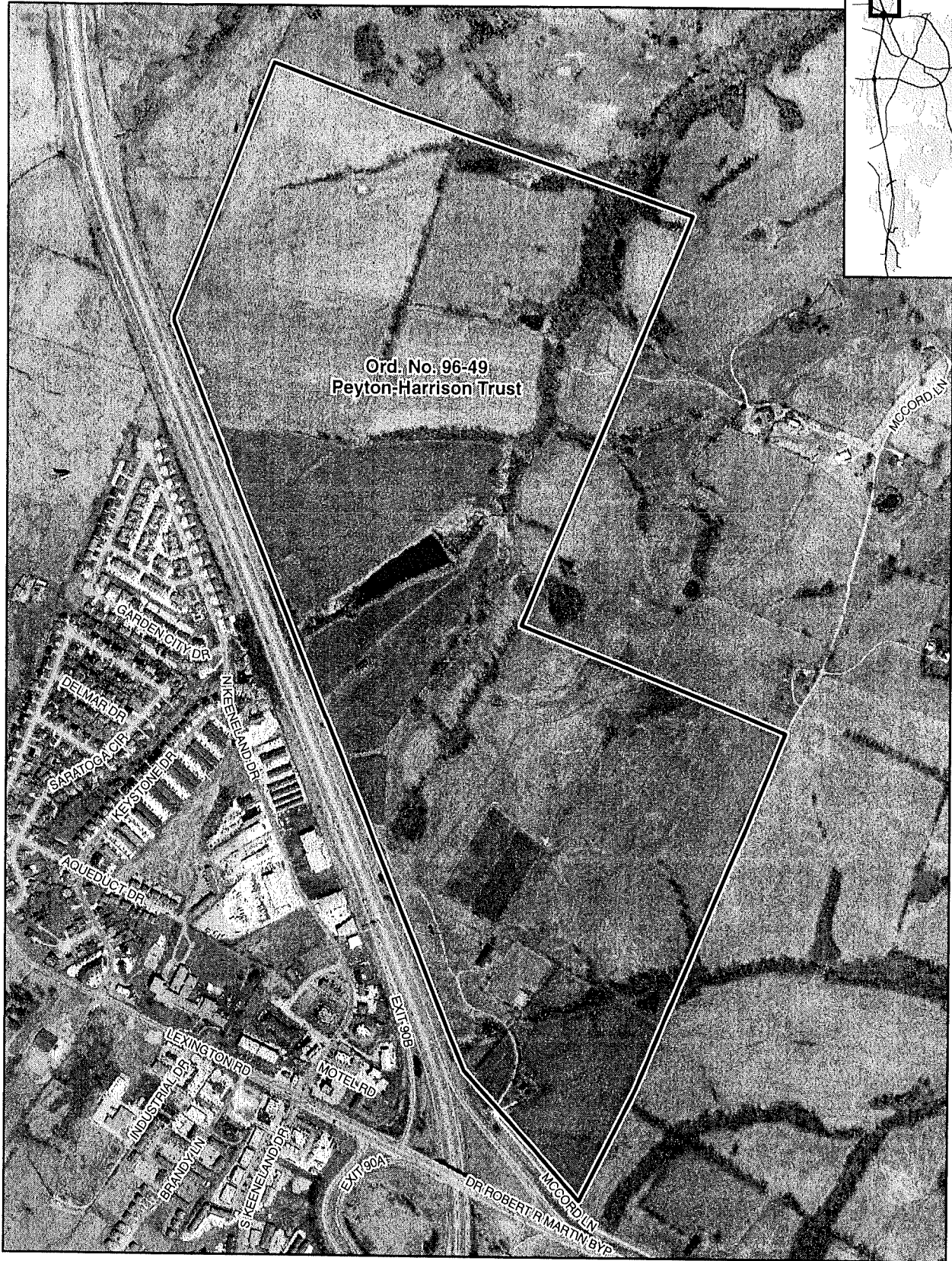
VOTE:	YES	NO
Commissioner Hacker	x	
Commissioner Jones	x	
Commissioner Robbins	x	
Commissioner Tobler	x	
Mayor Durham	absent	

Ann S. Durham
Mayor

Attest:

Betty Houghton
City Clerk

Annexation Map, Richmond, Kentucky



This map represents approximate annexation boundaries but is not a legal survey.

Richmond GIS
May 24, 2005

Disclaimer: While the GIS Office strives to maintain accurate data, the City of Richmond does not guarantee its maps or data to be complete, accurate, current, or without error, nor does the City guarantee the fitness of the data for a particular use.

OVERSIZE MAP INCLUDED WITH
SUBMISSION.

To research the map, contact the
Office of Secretary of State
or the County Clerk.