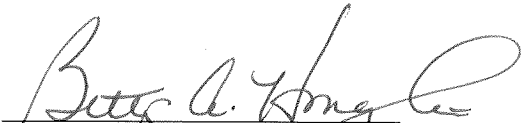


CERTIFICATE OF CITY CLERK

I, Betty A. Houghton, hereby certify that I am duly qualified and acting City Clerk of the City of Richmond, Kentucky, and that Ordinance 95-57 is a true and correct copy of this ordinance and was approved and adopted December 12, 1995 at a duly held City Commission meeting in accordance with all applicable requirements of Kentucky law, including KRS 61.810, 61.815, 61.820 and 61.825, that a quorum was present for this meeting and that said ordinance has not been modified, amended, revoked, or repealed and that same is now in full force and effect.

IN TESTIMONY WHEREOF, witness my signature as City Clerk and the official Seal of said City this the October 27, 2009.


Betty A. Houghton, City Clerk

(Seal of City)

RECEIVED AND FILED
DATE Oct. 30, 2009

TREY GRAYSON
SECRETARY OF STATE
COMMONWEALTH OF KENTUCKY
BY Karlie Adkinson

ORDINANCE NO. 95-57

AN ORDINANCE OF THE CITY OF RICHMOND, KENTUCKY, ANNEXING
52.360 ACRES OF LAND ADJACENT TO THE CITY LIMITS.

WHEREAS, the sole owner of record and the unincorporated territory described below would like to have annexed to the corporate limits of the City of Richmond, Kentucky 52.360 acres of land adjacent to the City Limits and described as follows:

Tract #1

Beginning at a steel pin in the line of VanWinkle, a corner to Tract 2; thence with the line of VanWinkle N15°42'45"W 38.68 feet to a steel pin; thence with the line of VanWinkle and Highland View Subdivision S81°06'13"W 875.51 feet to a steel pin, a corner to Bluegrass Acres Subdivision; thence with the lines of Bluegrass Acres Subdivision and Bob Luxon N17°55'58"E 527.12 feet to a steel pin; thence N03°48'18"E 454.76 feet to a steel pin a corner to Bob Luxon in the line of Winston Halcomb; thence with the lines of Winston Halcomb S86°03'10"E 96.94 feet to a steel pin; thence N11°51'16"E 29.51 feet to a hub and tack at a gate post, a corner to Tract 4; thence with the line of Tract 4 S86°17'19"E 720.60 feet to a steel pin, a common corner to Tracts 3, 4, 7, and 6; thence with the line of Tract 6 S14°46'56"E 746.54 feet to a steel pin; a common corner to Tracts 2, 3, and 6; thence with the line of Tract 2 S71°24'10"W 347.51 feet to a steel pin in the line of VanWinkle, a common corner to Tract 2 and point of beginning and containing 19.40 acres.

THERE ARE EXCEPTED FROM THIS CONVEYANCE those portions of the foregoing described property previously conveyed by Grantors herein to the Commonwealth of Kentucky for the use and benefit of the Transportation Cabinet, Department of Highways, Frankfort, Kentucky. This being seven (7) acres.

Tract 2

A certain tract of land situated on the north side of McKinney Lane, approximately 1710 feet east of Four Mile Road, in Madison County, Kentucky, bounded and described by survey as follows:

Beginning at iron pin in the north line of McKinney Lane, at the apparent end of McKinney Lane, said iron pin being situated 1710 feet east of the center of Four Mile Road, a corner to other lands of Ima Louise Manuel

Purvis, thence leaving McKinney Lane with the line of Purvis N25°-09'E 479.2 feet to an iron pin and corner to Purvis, thence continuing with Purvis S64°-00'E 709.4 feet to a post and corner to Winston Halcomb, thence with Halcomb's line S13°-09'W 449.4 feet to a post and corner to Halcomb, thence continuing with Halcomb N66°-30'W 807.6 feet to the beginning containing 7.96 acres.

Tract 3:

Beginning at a point in the line between the grantor and J. W. McKinney's Noble Farm; thence S11 1/2 W 805.2 feet to a corner and on the north side of a road, thence along the north side of said road N 69 W 51.8 poles to a stake at a gate across said road; thence S 21 W 16 poles to a stake in the right of way of the L & N RR; thence crossing the railroad, S 21 W 106 feet to a corner between Halcomb, McKinney and Taylor; thence in an easterly direction with the south line of the old railroad right of way as it meanders 1785 feet, thence continuing the same course 105.6 feet to a corner post in a fence, corner to other lands of the grantor; thence N 9 1/2 W 846 feet to a point, a corner post, thence N 49 W 495 feet to the point of beginning and being a part of the same land conveyed to first party by J. B. and C. V. Arnett by deed dated December 29, 1943 and recorded in Deed Book 129 at page 205, and the railroad right of way is a part of the land conveyed to the male grantor by Hume Chenault et ux by deed dated September 4, 1943 and recorded in Deed Book 128 at page 404, all books in the Madison County Court Clerk's Office. The above described tract of land contains 32 acres more or less.

WHEREAS, this annexation meets the requirements of KRS 81A.410, and the sole owner of record of such land has consented in writing to the annexation pursuant to KRS 81A.412, and,

WHEREAS, it is declared pursuant to KRS 81A.420 that it is desirable to annex this unincorporated contiguous territory and the Richmond Planning and Zoning Commission conducted a Public Hearing pursuant to KRS 100.209 for its recommendation as to zone classifications and any zoning map amendments.

NOW, THEREFORE BE IT ORDAINED by the Board of Commissioners of the City of Richmond, that:

1. The unincorporated territory described above being adjacent and contiguous to the corporate limits of the City of Richmond, Kentucky, is hereby annexed to the boundaries of the City of Richmond.

2. The Richmond Planning and Zoning Commission

conducted a Public Hearing pursuant to KRS 100.209 on November 8, 1995, and recommended that the zoning classification of the subject property be AG.

3. The City Clerk cause this Ordinance to be published in accordance with the appropriate Kentucky Revised Statutes.

DATE OF FIRST READING: November 21, 1995

MOTION BY: Commissioner Hacker

SECONDED BY: Commissioner Tobler

VOTE:	YES	NO
Commissioner Hacker	x	
Commissioner Jones	x	
Commissioner Robbins	x	
Commissioner Tobler	x	
Mayor Durham	x	

DATE OF SECONDED READING: December 12, 1995

MOTION BY: Commissioner Tobler

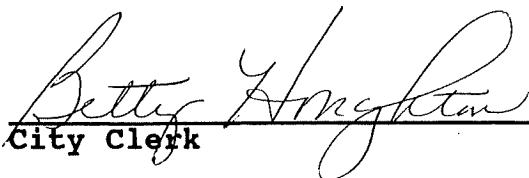
SECONDED BY: Commissioner Jones

VOTE:	YES	NO
Commissioner Hacker	x	
Commissioner Jones	x	
Commissioner Robbins	x	
Commissioner Tobler	x	
Mayor Durham	x	

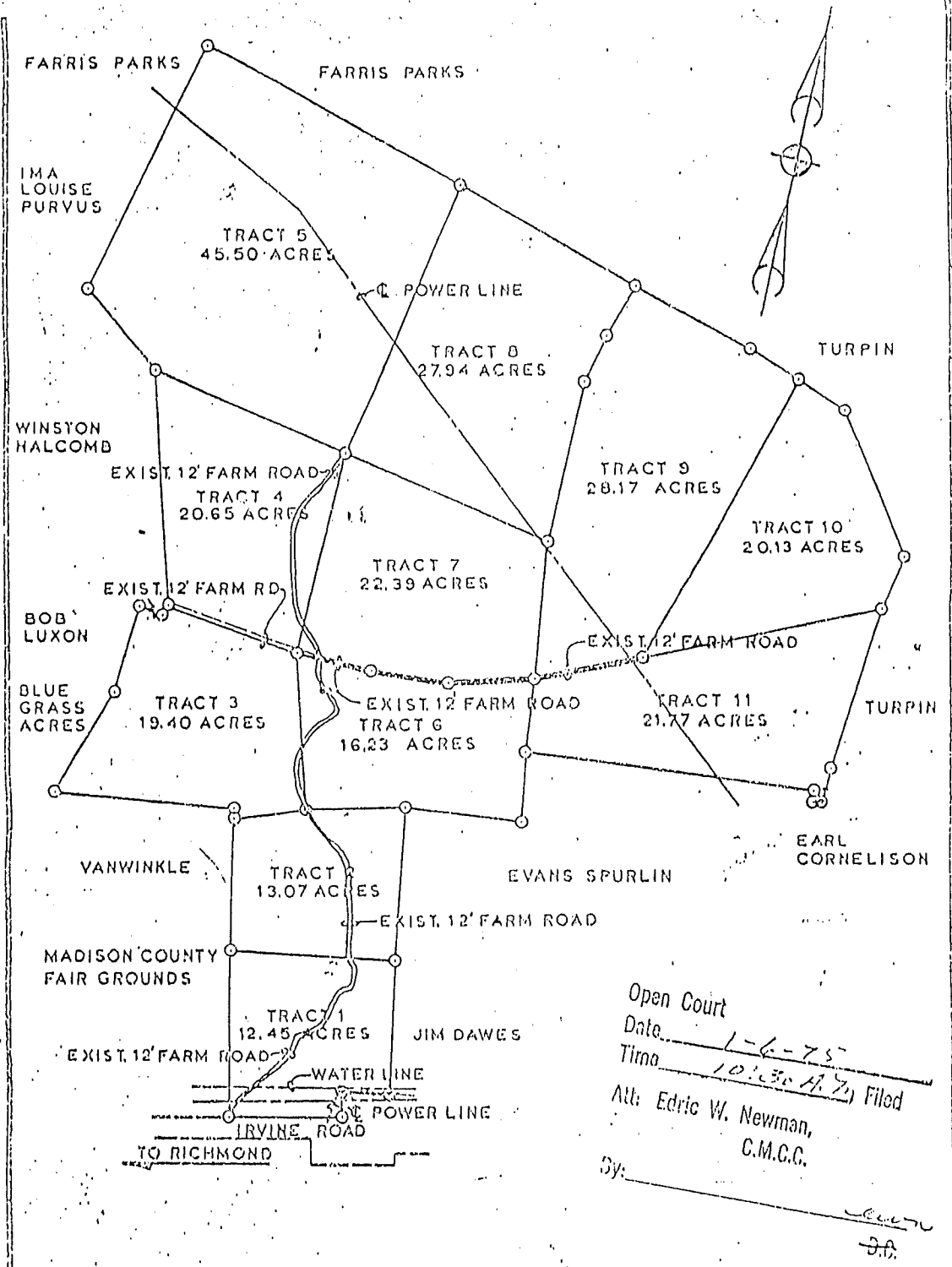


Mayor

Attest:



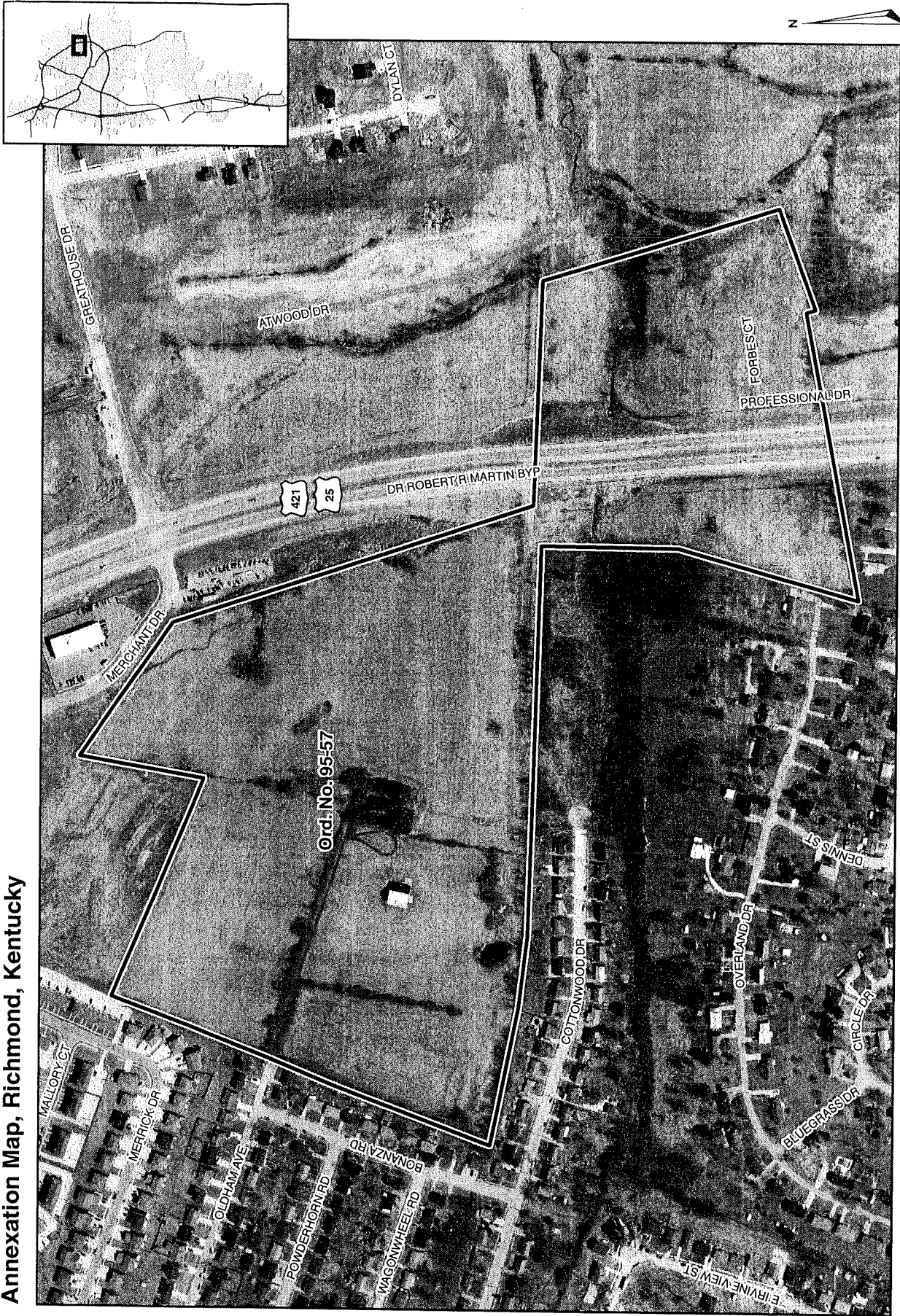
City Clerk



Open Court
 Date 1-6-75
 Time 10:30 A.M. Filed
 At: Edric W. Newman,
 C.M.C.C.
 By: *[Signature]*

FARM SKETCH		
HALCOMB HEIRS		
IRVINE ROAD RICHMOND KENTUCKY		
DRAWN BY J. V.	CHARLES E. BLACK CONSULTING ENGINEERS PROFESSIONAL PARK 211 CERI LANE RICHMOND, KENTUCKY	DATE SEPT. 74
CHECKED BY C. B.		SCALE 1" = 600'
REVISION 10-9-74		TOTAL AC. 1500

Annexation Map, Richmond, Kentucky



This map represents approximate annexation boundaries but is not a legal survey.

Disclaimer: While the GIS Office strives to maintain accurate data, the City of Richmond does not guarantee its maps or data to be complete, accurate, current, or without error, nor does the City guarantee the fitness of the data for a particular use.

Richmond GIS
May 24, 2005

OVERSIZE MAP INCLUDED WITH
SUBMISSION.

To research the map, contact the
Office of Secretary of State
or the County Clerk.