

CERTIFICATE OF CITY CLERK

I, Betty A. Houghton, hereby certify that I am duly qualified and acting City Clerk of the City of Richmond, Kentucky, and that Ordinance 95-25 is a true and correct copy of this ordinance and was approved and adopted July 11, 1995 at a duly held City Commission meeting in accordance with all applicable requirements of Kentucky law, including KRS 61.810, 61.815, 61.820 and 61.825, that a quorum was present for this meeting and that said ordinance has not been modified, amended, revoked, or repealed and that same is now in full force and effect.

IN TESTIMONY WHEREOF, witness my signature as City Clerk and the official Seal of said City this the October 27, 2009.


Betty A. Houghton, City Clerk

(Seal of City)

RECEIVED AND FILED
DATE Oct. 30, 2009

TREY GRAYSON
SECRETARY OF STATE
COMMONWEALTH OF KENTUCKY
BY Hardie Adkins

ORDINANCE NO. 95-25

AN ORDINANCE OF THE CITY OF RICHMOND, KENTUCKY, ANNEXING .96 ACRES OF LAND ADJACENT TO THE CITY LIMITS.

WHEREAS, the sole owner of record and the unincorporated territory described below would like to have annexed to the corporate limits of the City of Richmond, Kentucky .96 acres of land adjacent to the City Limits and described as follows:

A certain tract of land, located on the west side of Lancaster Road (Hwy. 52) approximately 3,000 feet south of the intersection of Lancaster Pike with the Richmond By Pass, and bounded by survey (job no. 1072) made September, 1968, by Charles E. Black, a licensed land surveyor (L.S. 670), and further described as follows:

Beginning at a point in the centerline of Lancaster Pike, said point being located S32°42'W 80.00 feet from a common corner to The Church of God; thence with the centerline of said road S32°42'W 209.25 feet to a point, thence leaving said road N57°18'W 200.00 feet to a steel pin; thence N32°42'E 209.25 feet to a steel pin; thence S57°18'E 200.00 feet to a point in the centerline of Lancaster Pike and point of beginning and containing 0.96 acres and being further known as Lot 4 Evergreen Estates, a copy of which is filed for record in the Madison County Clerk's Office. Requested to be zoned R-1-C.

WHEREAS, this annexation meets the requirements of KRS 81A.410, and the sole owner of record of such land has consented in writing to the annexation pursuant to KRS 81A.412, and,

WHEREAS, it is declared pursuant to KRS 81A.420 that it is desirable to annex this unincorporated contiguous territory and the Richmond Planning and Zoning Commission conducted a Public Hearing pursuant to KRS 100.209 for its recommendation as to zone classifications and any zoning map amendments.

NOW, THEREFORE BE IT ORDAINED by the Board of Commissioners of the City of Richmond, that:

1. The unincorporated territory described above being adjacent and contiguous to the corporate limits of the City of Richmond, Kentucky, is hereby annexed to the boundaries of the City of Richmond.

2. The Richmond Planning and Zoning Commission conducted a Public Hearing pursuant to KRS 100.209 on June 14, 1995, and recommended that the zoning classification of

the subject property be R-1-C.

3. The City Clerk cause this Ordinance to be published in accordance with the appropriate Kentucky Revised Statutes.

DATE OF FIRST READING: June 20, 1995

MOTION BY: Commissioner Tobler

SECONDED BY: Commissioner Hacker

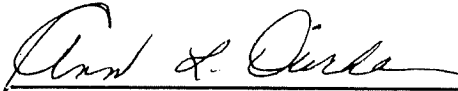
VOTE:	YES	NO
Commissioner Hacker	x	
Commissioner Jones	x	
Commissioner Robbins	x	
Commissioner Tobler	x	
Mayor Durham	x	

DATE OF SECONDED READING: July 11, 1995

MOTION BY: Commissioner Hacker

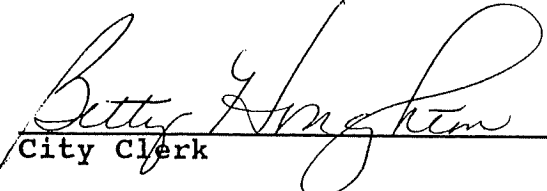
SECONDED BY: Commissioner Tobler

VOTE:	YES	NO
Commissioner Hacker	x	
Commissioner Jones	Absent	
Commissioner Robbins	x	
Commissioner Tobler	x	
Mayor Durham	x	



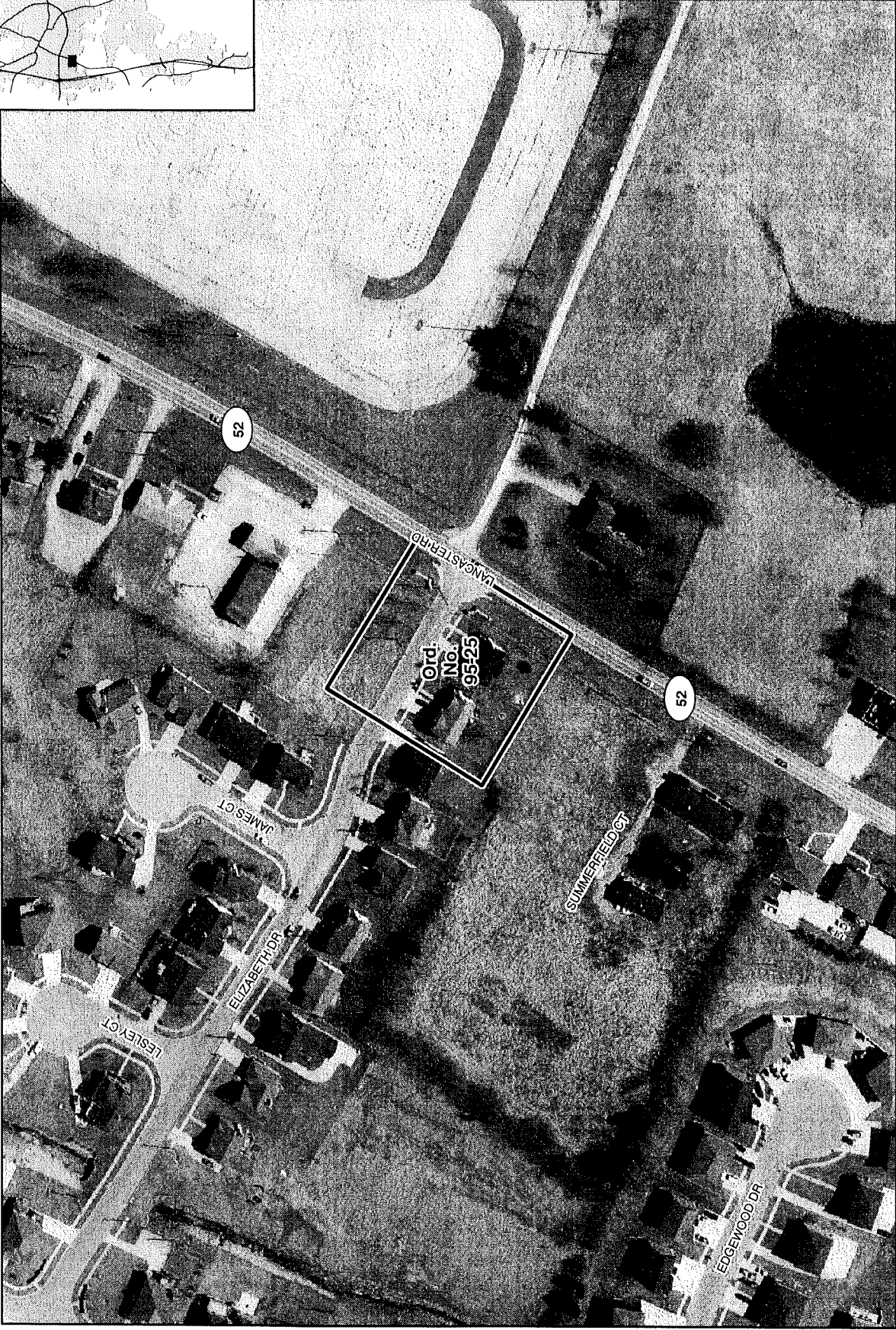
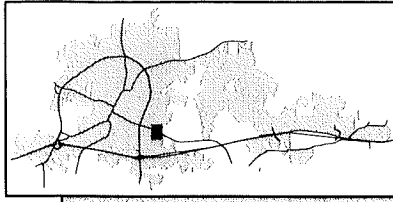
Mayor

Attest:



City Clerk

Annexation Map, Richmond, Kentucky



This map represents approximate annexation boundaries but is not a legal survey.

Disclaimer: While the GIS Office strives to maintain accurate data, the City of Richmond does not guarantee its maps or data to be complete, accurate, current, or without error, nor does the City guarantee the fitness of the data for a particular use.

Richmond GIS
May 24, 2005