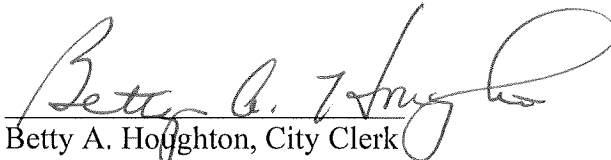


CERTIFICATE OF CITY CLERK

I, Betty A. Houghton, hereby certify that I am duly qualified and acting City Clerk of the City of Richmond, Kentucky, and that Ordinance 95-35 is a true and correct copy of this ordinance and was approved and adopted September 5, 1995 at a duly held City Commission meeting in accordance with all applicable requirements of Kentucky law, including KRS 61.810, 61.815, 61.820 and 61.825, that a quorum was present for this meeting and that said ordinance has not been modified, amended, revoked, or repealed and that same is now in full force and effect.

IN TESTIMONY WHEREOF, witness my signature as City Clerk and the official Seal of said City this the October 27, 2009.


Betty A. Houghton, City Clerk

(Seal of City)

RECEIVED AND FILED
DATE Oct. 30, 2009

TREY GRAYSON
SECRETARY OF STATE
COMMONWEALTH OF KENTUCKY
BY Kandice Adkins

ORDINANCE NO. 95-35

**AN ORDINANCE OF THE CITY OF RICHMOND, KENTUCKY, ANNEXING
1 ACRE OF LAND ADJACENT TO THE CITY LIMITS.**

WHEREAS, the sole owner of record and the unincorporated territory described below would like to have annexed to the corporate limits of the City of Richmond, Kentucky 1 acre of land adjacent to the City Limits and described as follows:

A certain tract of land situated 872.9 feet north of Irvine Road, adjacent to Spurlin Trailer Park in Madison County, Kentucky, bounded and described as follows:

Beginning at a post in the west line of Spurlin Trailer Park, said post being 872.9 feet north of the north right-of-way line of Irvine Road, thence with the line of Spurlin Trailer Park N23°-06'-00"W 562.08 feet to a post and corner to the Halcomb Heirs, thence with the Halcomb Heirs S85°-24'-08"W 13.63 feet, S10°-39'-23"E 593.07 feet to a post and new corner with Harold Prewitt, thence a new line with Prewitt N61°-43'-50"E 141.29 feet to the beginning containing 1 acre, as shown by plat of record in the Madison County Court Clerk's Office in Plat Book 9, page 120, in which reference is made for a more particular description.

Requested to be zoned MP.

WHEREAS, this annexation meets the requirements of KRS 81A.410, and the sole owner of record of such land has consented in writing to the annexation pursuant to KRS 81A.412, and,

WHEREAS, it is declared pursuant to KRS 81A.420 that it is desirable to annex this unincorporated contiguous territory and the Richmond Planning and Zoning Commission conducted a Public Hearing pursuant to KRS 100.209 for its recommendation as to zone classifications and any zoning map amendments.

NOW, THEREFORE BE IT ORDAINED by the Board of Commissioners of the City of Richmond, that:

1. The unincorporated territory described above being adjacent and contiguous to the corporate limits of the City of Richmond, Kentucky, is hereby annexed to the boundaries of the City of Richmond.

2. The Richmond Planning and Zoning Commission conducted a Public Hearing pursuant to KRS 100.209 on June 14, 1995, and recommended that the zoning classification of the subject property be MP.

3. The City Clerk cause this Ordinance to be published in accordance with the appropriate Kentucky Revised Statutes.

DATE OF FIRST READING: August 15, 1995

MOTION BY: Commissioner Jones

SECONDED BY: Commissioner Robbins

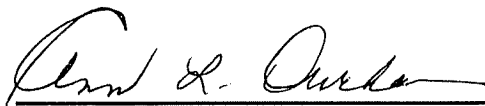
| VOTE: | YES | NO |
|----------------------|-----|----|
| Commissioner Hacker | x | |
| Commissioner Jones | x | |
| Commissioner Robbins | x | |
| Commissioner Tobler | x | |
| Mayor Durham | x | |

DATE OF SECONDED READING: September 5, 1995

MOTION BY: Commissioner Hacker

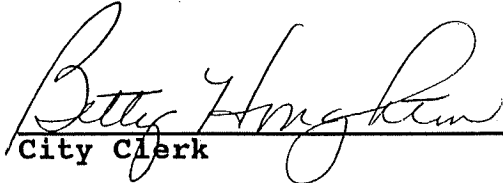
SECONDED BY: Commissioner Tobler

| VOTE: | YES | NO |
|----------------------|-----|----|
| Commissioner Hacker | x | |
| Commissioner Jones | x | |
| Commissioner Robbins | x | |
| Commissioner Tobler | x | |
| Mayor Durham | x | |



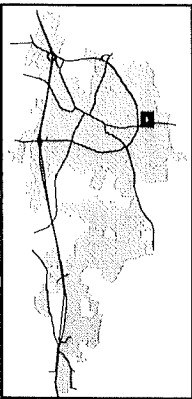
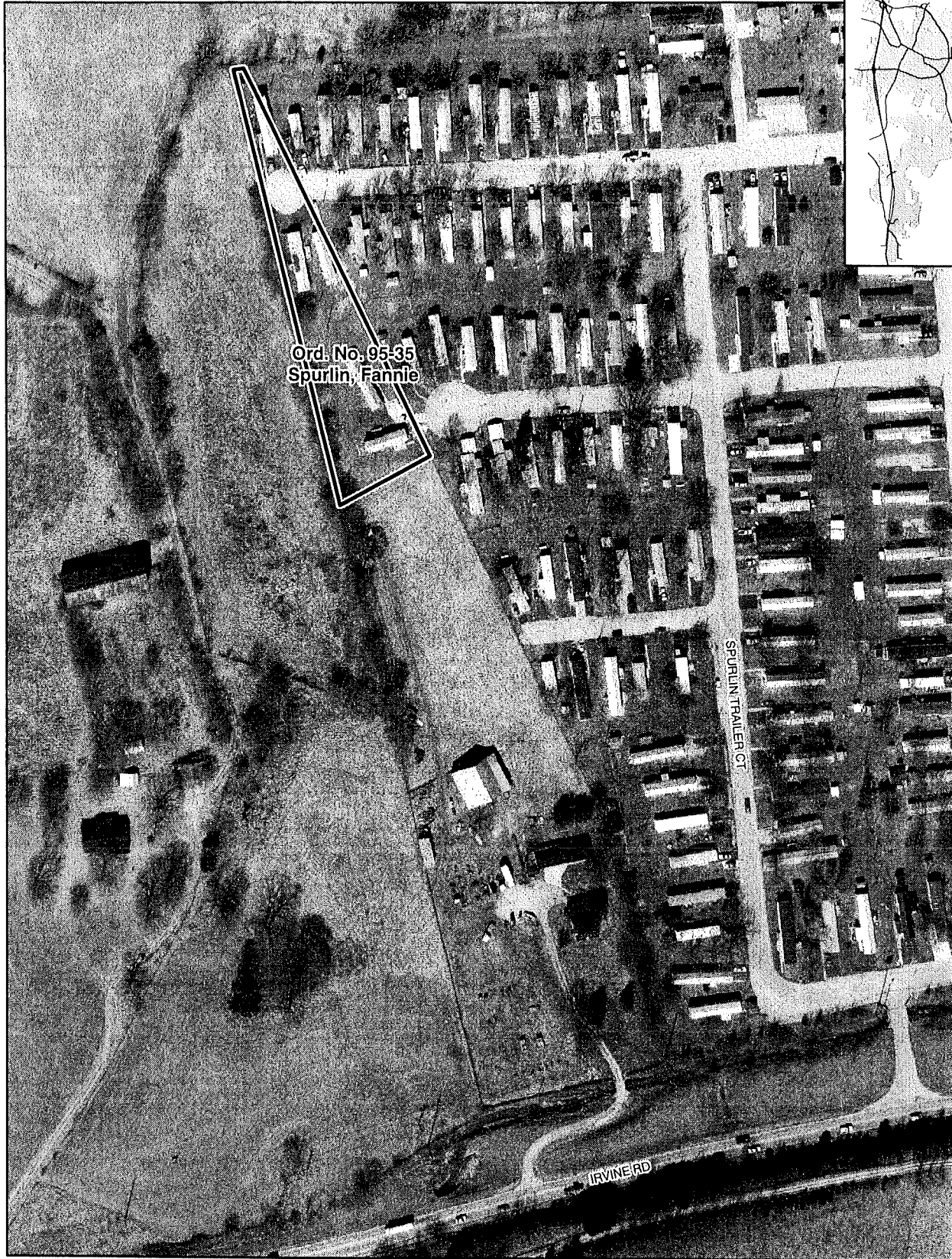
Mayor

Attest:



City Clerk

Annexation Map, Richmond, Kentucky



This map represents approximate annexation boundaries but is not a legal survey.

Richmond GIS
May 24, 2005

Disclaimer: While the GIS Office strives to maintain accurate data, the City of Richmond does not guarantee its maps or data to be complete, accurate, current, or without error, nor does the City guarantee the fitness of the data for a particular use.