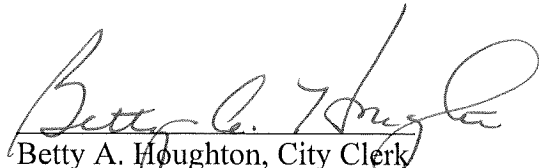


**CERTIFICATE OF CITY CLERK**

I, Betty A. Houghton, hereby certify that I am duly qualified and acting City Clerk of the City of Richmond, Kentucky, and that Ordinance 95-54 is a true and correct copy of this ordinance and was approved and adopted December 12, 1995 at a duly held City Commission meeting in accordance with all applicable requirements of Kentucky law, including KRS 61.810, 61.815, 61.820 and 61.825, that a quorum was present for this meeting and that said ordinance has not been modified, amended, revoked, or repealed and that same is now in full force and effect.

**IN TESTIMONY WHEREOF**, witness my signature as City Clerk and the official Seal of said City this the October 27, 2009.

  
Betty A. Houghton, City Clerk

(Seal of City)

RECEIVED AND FILED  
DATE Oct 30, 2009

TREY GRAYSON  
SECRETARY OF STATE  
COMMONWEALTH OF KENTUCKY  
BY Handie Adkins

**ORDINANCE NO. 95-54**

**AN ORDINANCE OF THE CITY OF RICHMOND, KENTUCKY ANNEXING  
184.3 ACRES OF LAND ADJACENT TO THE CITY LIMITS.**

**WHEREAS**, the sole owner of record and the unincorporated territory described below would like to have annexed to the corporate limits of the City of Richmond, Kentucky 184.3 acres of land adjacent to the City Limits and described as follows:

**Tract #1**

Being a parcel of the property of James Caperton Burnam and Anthony R. Burnam as recorded in deed book 45 page 336 and lying generally parallel with the new Richmond By-Pass; a parcel to be zoned as B-3 and more particularly described as follows:

Beginning at a point in the common line with the Katherine Phelps Caperton Trust and the Southwest right of way of said By-Pass, thence south 33° 52' 30" east for a distance of 521.21 feet to a point in said right-of-way; thence south 35° 30' 42" east for a distance of 1,051.9 feet to a point in said right-of-way; thence south 26° 16' 49" east for a distance of 302.86 feet to a point in said right-of-way; thence south 49° 15' 05" east for a distance of 207.58 feet to a point in said right-of-way; thence south 29° 25' 39" east for a distance of 451.67 feet to a point in said right of way; thence south 41° 28' 40" east for a distance of 221.11 feet to a point in the line of Frazier and Fritz; thence south 21° 33' 25" west for a distance of 212.64 feet with the line of Frazier and Fritz; thence north 89° 56' 35" west for a distance of 9.89 feet with same; thence south 19° 29' 50" west for a distance of 468.72 feet with the right-of-way of Four Mile Road; thence north 81° 28' 14" west for a distance of 808.96 feet leaving the road to a point; thence north 80° 28' 14" west for a distance of 34.04 feet to the line between the B-3 zone and the AG zone on subject tract; thence north 00° 19' 09" west for a distance of 1,561.76 feet with said line between zone; thence north 35° 30' 08" west for a distance of 746.47 feet with said line; thence north 33° 52' 30" west for a distance of 857.29 feet with said line to a point in the line with the Katherine Caperton Trust; thence south 75° 32' 45" east for a distance of 451.54 feet to the point of beginning and containing 40.2 acres or less to be zoned as B-3.

Together with and subject to covenants, easements and restrictions of record.

**Tract #2**

Being the most northeasterly tract of the property of James Caperton Burnam and Anthony R. Burnam as recorded in Deed Book 45 Page 336 and lying on Red House Road in Madison County, Kentucky and being a 32 acres tract, more or less, to be zoned as B-3 and more particularly described as follows:

Beginning at a point in the north right of way of the new Richmond By-Pass and on the common line between the Katherine Phelps Caperton Trust and the subject property thence south 75° 32' 45" east for a distance of 1,857.08 feet to a point and corner between said tracts and in the line of Frazier and Fritz; thence south 20° 33' 25" west for

a distance of 1,200.52 feet with said line; thence south 21° 33' 25" west for a distance of 337.66 feet with said line to the intersection of the northeast right-of-way of the new Richmond By-Pass; thence north 33° 52' 30" west for a distance of 522.13 feet with said line; thence north 24° 38' 42" west for a distance of 404.82 feet with said line; thence north 60° 26' 24" west for a distance of 111.84 feet with said line; thence north 33° 52' 30" west for a distance of 749.46 feet with said line; thence north 17° 10' 33" west for a distance of 52.13 feet with said line; thence north 36° 44' 15" west for a distance of 200.13 feet with said line; thence north 33° 52' 30 seconds west for a distance of 256.07 feet to the point of beginning.

Together with and subject to covenants, easements and restrictions of record.

**Tract #3**

Being a parcel of the property of James Caperton Burnam and Anthony R. Burnam as recorded in Deed Book 45 Page 336 and lying on Red House Road and extending to Four Mile Road and being the remainder of the tract recorded as noted above; this parcel to be zoned as AG and more particularly described as follows:

Beginning at a point in the centerline of Red House Road and continuing with said center line 3 calls: thence north 24° 31' 46" east for a distance of 1,262.60 feet; thence north 17° 31' 46" east for a distance of 627.00 feet; thence north 08° 16' 46" east for a distance of 363.00 feet to a common corner with the Katherine Phelps Caperton Trust; thence south 75° 38' 14" east for a distance 974.67 feet to a point in the common line between said tracts and the division line between different zoning thence south 33° 52' 30" east for a distance of 857.29 feet to a point on said zoning line; thence south 35° 30' 08" east for a distance of 746.47 feet to a point on the division line between zones B-3 and AG; thence south 00° 19' 09" east for a distance of 1,561.76 feet to a point on the boundary of subject tract; thence north 80° 28' 14" west for a distance of 1,372.44 feet to a point on said boundary; thence north 19° 43' 14" west for a distance of 402.60 feet to a point on said boundary; thence north 82° 43' 14" west for a distance of 348.20 feet to a point; thence north 65° 13' 14" west for a distance of 875.40 feet to the point of beginning and containing 112.1 acres to be zoned AG with a parcel excepted to CSX Railroad that contained 7.74 acres with 119.842 acres in all.

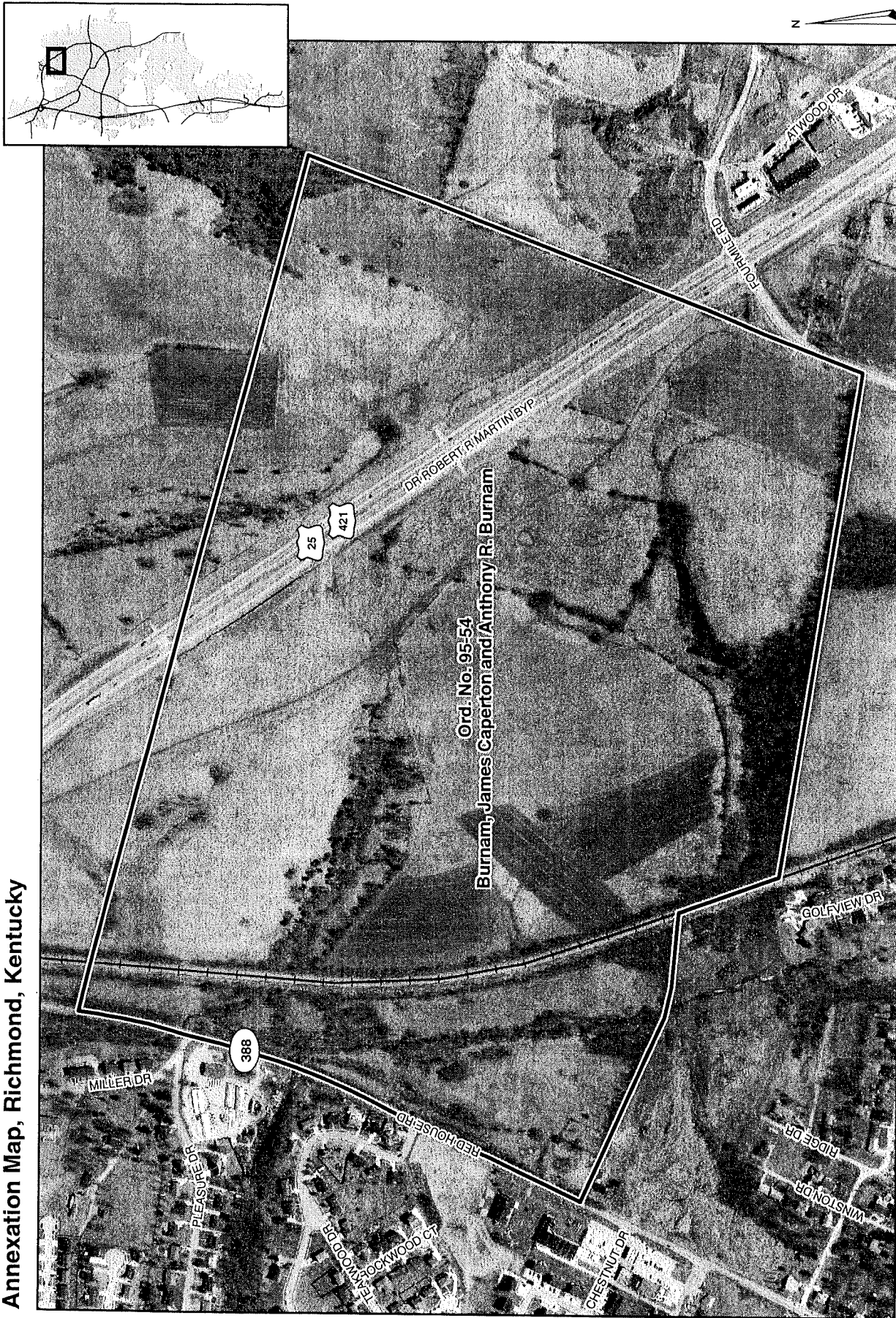
Together with and subject to covenants, easements and restrictions of record.

**WHEREAS**, this annexation meets the requirements of KRS 81A.410 and the sole owner of record of such land has consented in writing to the annexation pursuant to KRS 81A.412, and

**WHEREAS**, it is declared pursuant to KRS 81A.420 that it is desirable to annex this unincorporated contiguous territory and the Richmond Planning and Zoning Commission conducted a Public Hearing pursuant to KRS 100.209 for its recommendation as to zone classifications and any zoning map amendments.



# Annexation Map, Richmond, Kentucky



Ord. No. 95-54  
Burnam, James Caperton and Anthony R. Burnam



This map represents approximate annexation boundaries but is not a legal survey.

Disclaimer: While the GIS Office strives to maintain accurate data, the City of Richmond does not guarantee its maps or data to be complete, accurate, current, or without error, nor does the City guarantee the fitness of the data for a particular use.

Richmond GIS  
May 24, 2005

OVERSIZE MAP INCLUDED WITH  
SUBMISSION.

To research the map, contact the  
Office of Secretary of State  
or the County Clerk.