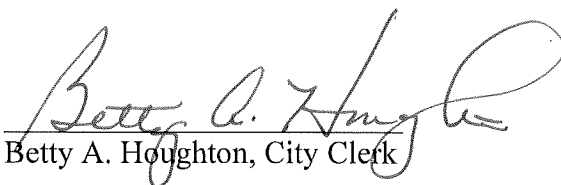


CERTIFICATE OF CITY CLERK

I, Betty A. Houghton, hereby certify that I am duly qualified and acting City Clerk of the City of Richmond, Kentucky, and that Ordinance 94-03 is a true and correct copy of this ordinance and was approved and adopted March 1, 1994 at a duly held City Commission meeting in accordance with all applicable requirements of Kentucky law, including KRS 61.810, 61.815, 61.820 and 61.825, that a quorum was present for this meeting and that said ordinance has not been modified, amended, revoked, or repealed and that same is now in full force and effect.

IN TESTIMONY WHEREOF, witness my signature as City Clerk and the official Seal of said City this the October 27, 2009.


Betty A. Houghton, City Clerk

(Seal of City)

RECEIVED AND FILED
DATE Oct. 30, 2009

TREY GRAYSON
SECRETARY OF STATE
COMMONWEALTH OF KENTUCKY
BY Handie Adkinson

ORDINANCE NO. 94-03

AN ORDINANCE OF THE CITY OF RICHMOND, KENTUCKY ANNEXING 5.667 ACRES OF LAND ADJACENT TO THE CITY LIMITS.

WHEREAS, the sole owners of record and the unincorporated territory described below would like to have annexed to the corporate limits of the City of Richmond, Kentucky, 5.667 acres of land adjacent to the City Limits and described as follows:

Beginning at a point at the intersection of the south line of Continental Drive with the west line of Willow Drive, a corner thence with the west line of Willow Drive S02°-44'-00"E 401.16 feet to an iron pin and corner to Raymond Anderson, Trailer Park, thence leaving Willow Drive with Anderson's line, Trailer Park, N87°-41'-00"W 635.44 feet to an iron pin and corner to Virginia Robinson et al, thence with Robinson's line N02°-19'-00"E 399.60 feet to an iron pin in the south line of Continental Drive, a corner, thence with the south line of Continental Drive S87°-41'-00"E 600.00 feet to the beginning containing 5.667 acres.

WHEREAS, this annexation meets the requirements of KRS 81A.410 and the sole owners of record of such land has consented in writing to the annexation pursuant to KRS 81A.412, and

WHEREAS, it is declared pursuant to KRS 81A.420 that it is desirable to annex this unincorporated contiguous territory and the Richmond Planning and Zoning Commission conducted a Public Hearing pursuant to KRS 100.209 for its recommendations as to zone classification and any zoning map amendments.

NOW, THEREFORE BE IT ORDAINED, by the Board of Commissioners of the City of Richmond that:

1. The unincorporated territory described above being adjacent and contiguous to the corporate limits of the City of Richmond, Kentucky, is hereby annexed to the boundaries of the City of Richmond.

2. The Richmond Planning and Zoning Commission conducted a Public Hearing pursuant to KRS 100.209 on February 16, 1994, and recommended that the zoning classification of the subject property be I-2.

3. The City Clerk cause this Ordinance to be published in accordance with the appropriate Kentucky Revised Statutes.

DATE OF FIRST READING: February 22, 1994

MOTION BY: Commissioner Hacker

SECONDED BY: Commissioner Tobler

VOTE:	YES	NO
Commissioner Hacker	x	
Commissioner Jones	x	
Commissioner Tobler	x	
Commissioner Strong	x	
Mayor Durham	x	

DATE OF SECOND READING: March 1, 1994

MOTION BY: Commissioner Tobler

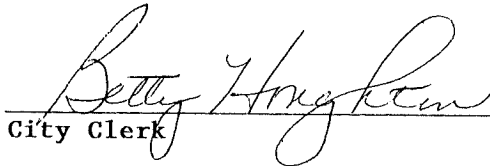
SECONDED BY: Commissioner Hacker

VOTE:	YES	NO
Commissioner Hacker	x	
Commissioner Jones	x	
Commissioner Tobler	x	
Commissioner Strong	x	
Mayor Durham	x	



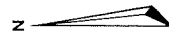
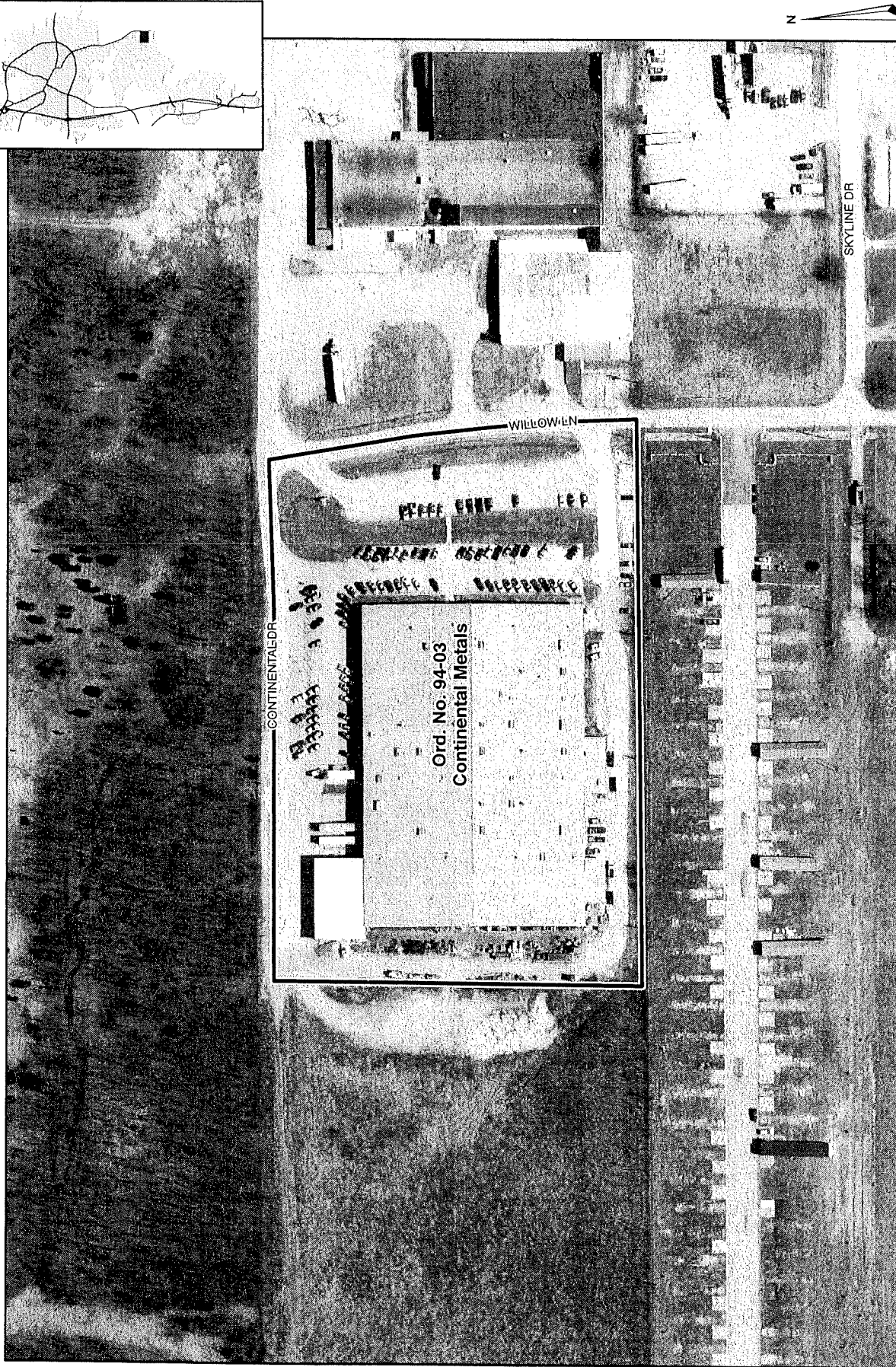
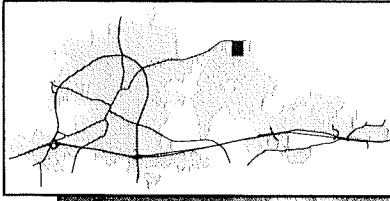
Mayor

Attest:



City Clerk

Annexation Map, Richmond, Kentucky



This map represents approximate annexation boundaries but is not a legal survey.

Disclaimer: While the GIS Office strives to maintain accurate data, the City of Richmond does not guarantee its maps or data to be complete, accurate, current, or without error, nor does the City guarantee the fitness of the data for a particular use.

Richmond GIS
May 25, 2005