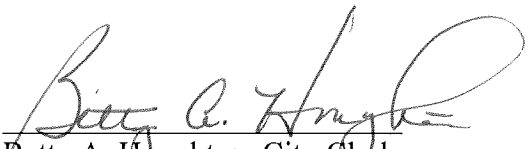


CERTIFICATE OF CITY CLERK

I, Betty A. Houghton, hereby certify that I am duly qualified and acting City Clerk of the City of Richmond, Kentucky, and that Ordinance 94-10 is a true and correct copy of this ordinance and was approved and adopted April 5, 1994 at a duly held City Commission meeting in accordance with all applicable requirements of Kentucky law, including KRS 61.810, 61.815, 61.820 and 61.825, that a quorum was present for this meeting and that said ordinance has not been modified, amended, revoked, or repealed and that same is now in full force and effect.

IN TESTIMONY WHEREOF, witness my signature as City Clerk and the official Seal of said City this the October 27, 2009.


Betty A. Houghton, City Clerk

(Seal of City)

RECEIVED AND FILED
DATE Oct. 30, 2009

TREY GRAYSON
SECRETARY OF STATE
COMMONWEALTH OF KENTUCKY
BY Hardie Adkins

ORDINANCE NO. 94-10

AN ORDINANCE OF THE CITY OF RICHMOND, KENTUCKY, ANNEXING 8.031 ACRES OF LAND ADJACENT TO THE CITY LIMITS.

WHEREAS, the sole owner of record and the unincorporated territory described below would like to have annexed to the corporate limits of the City of Richmond, Kentucky 8.031 acres of land adjacent to the City Limits and described as follows:

Beginning at an iron pin in the north line of Raymond Anderson, Trailer Park, at the southwest corner of Continental Metal, a corner, thence with Anderson's line, Trailer Park, N87°-41'-00"W 942.34 feet to a post in the east right of way line of the CSX Railroad, a corner, thence with said east line, 4 calls, N40°-06'-00"E 233.1 feet, N37°-03'-00"E 121.05 feet, N34°-26'-00"E 100.00 feet, N31°-47'-00"E 91.80 feet to a point and corner to Okonite, thence with the line of Okonite S87°-41'-00"W 632.42 feet to an iron pin at the end of Continental Drive, a corner, thence crossing the end of Continental Drive S02°-19'-00"W, passing the corner of Continental Metal at 50.00 feet, in all 449.60 feet to the beginning containing 8.031 acres.

WHEREAS, this annexation meets the requirements of KRS 81A.410, and the sole owner of record of such land has consented in writing to the annexation pursuant to KRS 81A.412, and,

WHEREAS, it is declared pursuant to KRS 81A.420 that it is desirable to annex this unincorporated contiguous territory and the Richmond Planning and Zoning Commission conducted a Public Hearing pursuant to KRS 100.209 for its recommendation as to zone classifications and any zoning map amendments.

NOW, THEREFORE BE IT ORDAINED by the Board of Commissioners of the City of Richmond that:

1. The unincorporated territory described above being adjacent and contiguous to the corporate limits of the City of Richmond, Kentucky, is hereby annexed to the boundaries of the City of Richmond.

2. The Richmond Planning and Zoning Commission conducted a Public Hearing pursuant to KRS 100.209 on March 9, 1994, and recommended that the zoning classification of the subject property be I-2.

3. The City Clerk cause this Ordinance to be published in accordance with the appropriate Kentucky Revised Statutes.

DATE OF FIRST READING March 22, 1994

MOTION BY: Commissioner Jones

SECONDED BY: Commissioner Hacker


VOTE:	YES	NO
Commissioner Hacker	x	
Commissioner Jones	x	
Commissioner Strong	x	
Commissioner Tobler	x	
Mayor Durham	x	

DATE OF SECOND READING April 5, 1994

MOTION BY: Commissioner Hacker

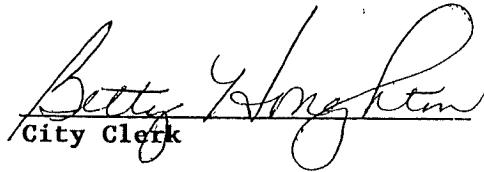
SECONDED BY: Commissioner Tobler

VOTE:	YES	NO
Commissioner Hacker	x	
Commissioner Jones	Absent	
Commissioner Strong	x	
Commissioner Tobler	x	
Mayor Durham	x	



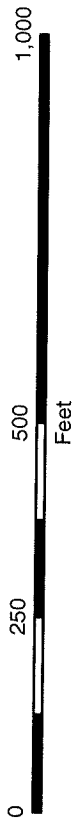
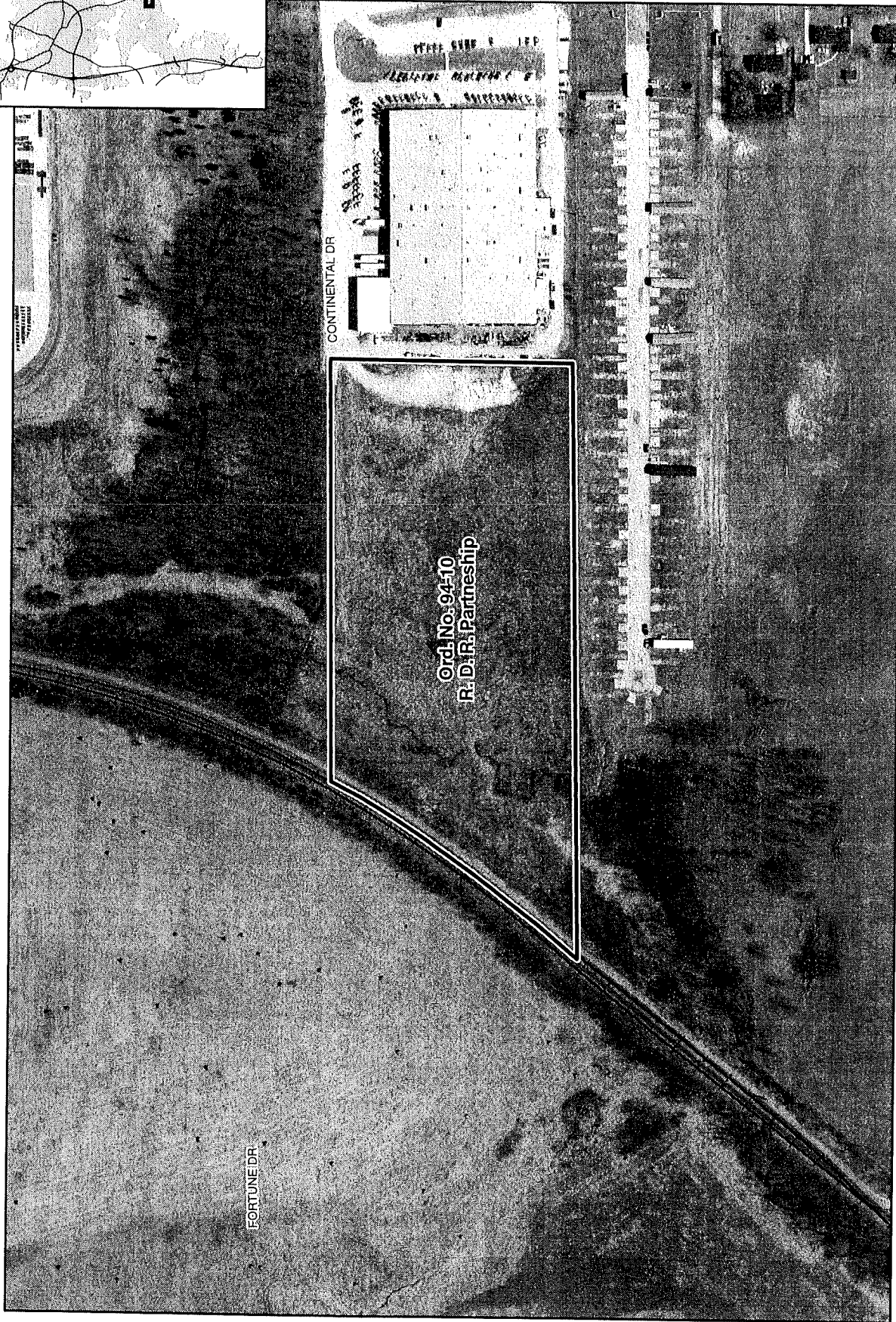
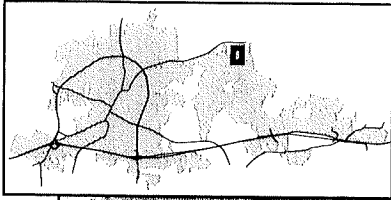
Mayor

Attest:



City Clerk

Annexation Map, Richmond, Kentucky



This map represents approximate annexation boundaries but is not a legal survey.

Disclaimer: While the GIS Office strives to maintain accurate data, the City of Richmond does not guarantee its maps or data to be complete, accurate, current, or without error, nor does the City guarantee the fitness of the data for a particular use.

Richmond GIS
May 24, 2005

OVERSIZE MAP INCLUDED WITH
SUBMISSION.

To research the map, contact the
Office of Secretary of State
or the County Clerk.