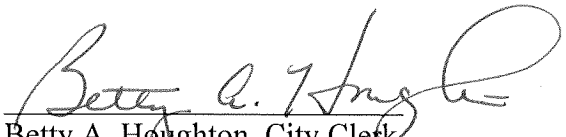


CERTIFICATE OF CITY CLERK

I, Betty A. Houghton, hereby certify that I am duly qualified and acting City Clerk of the City of Richmond, Kentucky, and that Ordinance 94-21 is a true and correct copy of this ordinance and was approved and adopted May 3, 1994 at a duly held City Commission meeting in accordance with all applicable requirements of Kentucky law, including KRS 61.810, 61.815, 61.820 and 61.825, that a quorum was present for this meeting and that said ordinance has not been modified, amended, revoked, or repealed and that same is now in full force and effect.

IN TESTIMONY WHEREOF, witness my signature as City Clerk and the official Seal of said City this the October 27, 2009.


Betty A. Houghton, City Clerk

(Seal of City)

RECEIVED AND FILED
DATE Oct. 30, 2009

TREY GRAYSON
SECRETARY OF STATE
COMMONWEALTH OF KENTUCKY
BY Hankie Adkins

ORDINANCE NO. 94-21

AN ORDINANCE OF THE CITY OF RICHMOND, KENTUCKY, ANNEXING 76.212 ACRES OF LAND ADJACENT TO THE CITY LIMITS.

WHEREAS, the sole owner of record and the unincorporated territory described below would like to have annexed to the corporate limits of the City of Richmond, Kentucky 76.212 acres of land adjacent to the City Limits and described as follows:

TRACT 1 - 9.053 ACRES (R-1-C)

Beginning at a point at the intersection of the north line of Oldham Avenue with the east line of Four Mile Road, a corner, thence with the east line of Four Mile Road N19°-29'-00"E 230.00 feet to a point and new corner with Frazier, thence a new line with Frazier (Proposed R-2) N70°-46'-08"E 1718.77 feet to a post and corner to Winston Halcomb, thence with Halcomb's line S21°-36'-00"W 230.20 feet to a post in the north line of Oldham Avenue, a corner, thence with said north line N70°-46'-08"W 1710.27 feet to the beginning containing 9.053 acres.

TRACT 2 - 11.478 ACRES (R-2)

Beginning at a post in the east line of Four Mile Road, said point being 230.00 feet north of the north line of Oldham Avenue, a corner to the land proposed for R-1-C zoning, thence with said east line N19°-29'-00"E 290.00 feet to a point and new corner with Frazier, thence a new line with Frazier (Proposed R-3) S70°-46'-08"E 1728.21 feet to a point and new corner to Frazier, thence a new line with Frazier (Proposed B-3) S19°-13'-52"W 30.92 feet to a post and corner to Winston Halcomb, thence with Halcomb's line S21°-36'-00"W 259.30 feet to a point and new corner to Frazier, thence a new line with Frazier (Proposed R-1-C) N70°-46'-08"W 1718.77 feet to the beginning containing 11.478 acres.

TRACT 3 - 16.654 ACRES (R-3)

Beginning at a point in the east line of Four Mile Road, said point being 520.00 feet north of the north line of Oldham Avenue. A corner to the land proposed for R-2 zoning, thence with said east line, 2 calls N19°-29'-00"E 332.00 feet, N19°-52'-00"E 88.01 feet to a point and new corner with Frazier, thence a new line with Frazier (Proposed B-3) 2 calls, S70°-46'-08"E 1725.77 feet, S19°-13'-52"W 420.00 feet to a point and new corner to Frazier, thence a new line with Frazier (Proposed R-2) N70°-46'-08"W 1728.21 feet to the beginning containing 16.654 acres.

TRACT 4 - 39.027 ACRES (B-3)

Beginning at a point in the east line of Four Mile Road, said point being 940.01 feet north of the north line of Oldham Avenue, a corner to the land proposed for R-3 zoning, thence with said east line, N19°-52'-00"E 608.69 feet to a post and corner to Harold Richardson, thence with Richardson's line and the line of Farris Parks, 2 calls, S70°-27'-00"E 1259.10 feet, S70°-53'-00"E 976.00 feet to a post and corner to John Halcomb, thence with the line of John Halcomb and the line of Winston Halcomb S09°-12'-00"W 1113.50 to a post and corner to Winston Halcomb, thence continuing with Winston Halcomb N67°-28'-00"W 711.20 feet to a post and corner to Frazier, thence a new line with Frazier (Proposed R-2 and R-3) 2 calls N19°-13'-52"E 450.92 feet, N70°-46'-08"W 1725.77 feet to the beginning containing 39.027 acres.

WHEREAS. this annexation meets the requirements of KRS 81A.410, and the sole owner of record of such land has consented in writing to the annexation pursuant to KRS 81A.412, and,

WHEREAS, it is declared pursuant to KRS 81A.420 that it is desirable to annex this unincorporated contiguous territory and the Richmond Planning and Zoning Commission conducted a Public Hearing pursuant to KRS 100.209 for its recommendation as to zone classifications and any zoning map amendments.

NOW, THEREFORE BE IT ORDAINED by the Board of Commissioners of the City of Richmond that:

1. The unincorporated territory described above being adjacent and contiguous to the corporate limits of the City of Richmond, Kentucky, is hereby annexed to the boundaries of the City of Richmond.

2. The Richmond Planning and Zoning Commission conducted a Public Hearing pursuant to KRS 100.209 on April 13, 1994, and recommended that the zoning classification of the subject property be R-1-C, R-2, R-3 and B-3.

3. The City Clerk cause this Ordinance to be published in accordance with the appropriate Kentucky Revised Statutes.

DATE OF FIRST READING: April 26, 1994

MOTION BY: Commissioner Jones

SECONDED BY: Commissioner Hacker

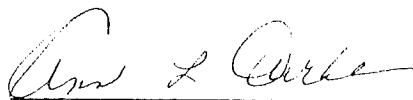
VOTE:	YES	NO
Commissioner Hacker	x	
Commissioner Jones	x	
Commissioner Strong	x	
Commissioner Tobler	x	
Mayor Durham	x	

DATE OF SECOND READING: May 3, 1994

MOTION BY: Commissioner Hacker

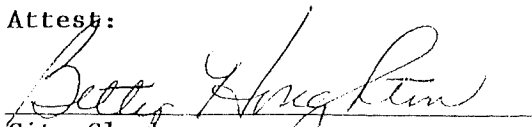
SECONDED BY: Commissioner Tobler

VOTE:	YES	NO
Commissioner Hacker	x	
Commissioner Jones	x	
Commissioner Strong	x	
Commissioner Tobler	x	
Mayor Durham	x	



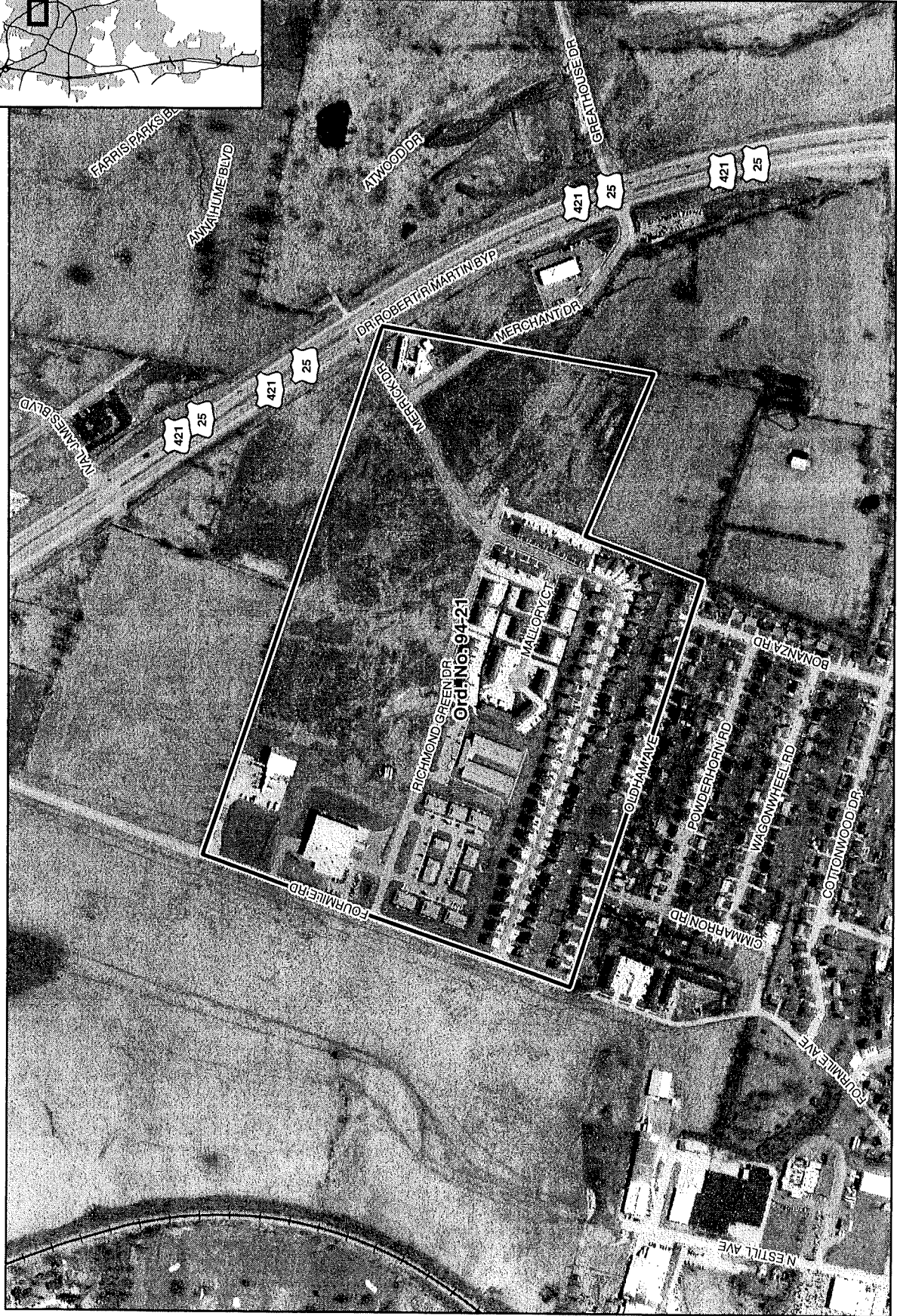
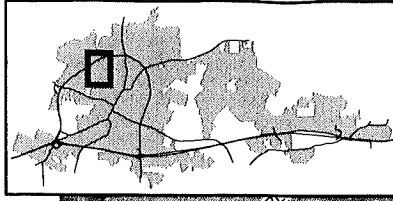
Mayor

Attest:



City Clerk

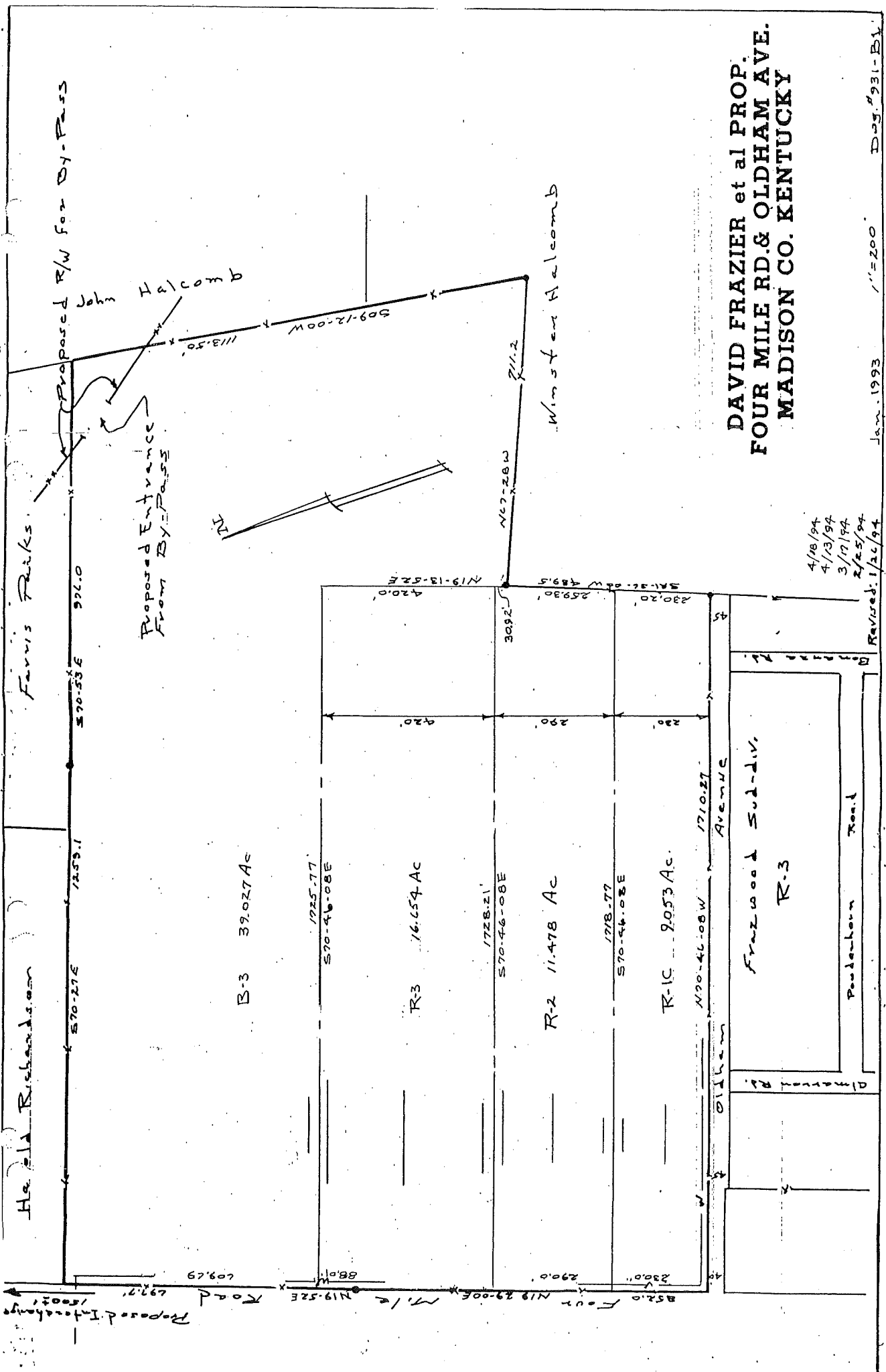
Annexation Map, Richmond, Kentucky



This map represents approximate annexation boundaries but is not a legal survey.

Disclaimer: While the GIS Office strives to maintain accurate data, the City of Richmond does not guarantee its maps or data to be complete, accurate, current, or without error, nor does the City guarantee the fitness of the data for a particular use.

Richmond GIS
May 24, 2005



DAVID FRAZIER et al PROP.
 FOUR MILE RD. & OLDHAM AVE.
 MADISON CO. KENTUCKY

4/18/94
 4/13/94
 3/17/94
 2/25/94
 Revised: 1/26/94

Jan. 1993 1"=200'

D-29, 931-B1

OVERSIZE MAP INCLUDED WITH
SUBMISSION.

To research the map, contact the
Office of Secretary of State
or the County Clerk.