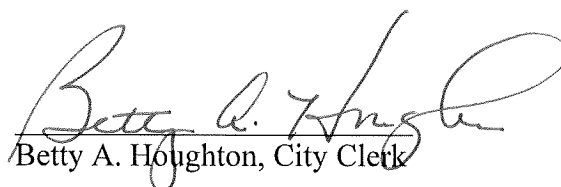


CERTIFICATE OF CITY CLERK

I, Betty A. Houghton, hereby certify that I am duly qualified and acting City Clerk of the City of Richmond, Kentucky, and that Ordinance 94-24 is a true and correct copy of this ordinance and was approved and adopted May 17, 1994 at a duly held City Commission meeting in accordance with all applicable requirements of Kentucky law, including KRS 61.810, 61.815, 61.820 and 61.825, that a quorum was present for this meeting and that said ordinance has not been modified, amended, revoked, or repealed and that same is now in full force and effect.

IN TESTIMONY WHEREOF, witness my signature as City Clerk and the official Seal of said City this the October 27, 2009.


Betty A. Houghton, City Clerk

(Seal of City)

RECEIVED AND FILED
DATE Oct 30, 2009

TREY GRAYSON
SECRETARY OF STATE
COMMONWEALTH OF KENTUCKY
BY Handie Addison

A certain tract of land located west of Duncannon Lane and south of the Ramsey Property in the Commonwealth of Kentucky, County of Madison consisting of 140 acres and described as follows:

The point of beginning being a post in the north line of Duncannon Lane, a corner to Bruce Maggard, thence leaving the road with Maggard's line two (2) calls, N47°15'00"W 2533.51 feet, N18°30'00"W 785.40 feet to a post and corner to Mary Turpin, thence with Turpin's line two (2) calls, N70°30'00"E 882.42 feet, N9°30'00"W 451.44 feet to a post and corner to the Ramsey Heirs, thence with the line of the Ramsey Heirs two (2) calls, S62°00'00"E 1477.74 feet, S59°16'27"E 2096.24 feet to a post in the north line of the Richmond Industrial Park, a corner, thence with said north line of the Industrial Park and the north line of Duncannon Lane eleven (11) calls, S47°05'49"W 1662.24 feet, S46°37'30"W 38.94 feet, S51°15'00"W 62.04 feet, S53°00'00"W 61.38 feet, S56°00'00"W 66.00 feet, S58°30'00"W 73.92 feet, S61°00'00"W 21.12 feet, S62°00'00"W 73.26 feet, S64°30'00"W 62.04 feet, S67°45'00"W 59.40 feet, S70°00'00"W 105.60 feet to the point of beginning containing 140 acres more or less.

This Resolution shall be in full force and effect upon reading and adoption by the City of Richmond Board of Commissioners.

DATE OF READING: *October 27, 2009*
MOTION BY: *Brewer*
SECONDED BY: *Blythe*

VOTE:	YES	NO
Commissioner Blythe	<i>x</i>	
Commissioner Brewer	<i>x</i>	
Commissioner Smart	<i>x</i>	
Commissioner Strong	<i>Absent</i>	
Mayor Lawson	<i>x</i>	

Cristina Lawson

Mayor

ATTEST:

Betty Hughes

City Clerk

ORDINANCE NO. 94-24

AN ORDINANCE OF THE CITY OF RICHMOND, KENTUCKY, ANNEXING APPROXIMATELY 140 ACRES OF LAND ADJACENT TO THE CITY LIMITS.

WHEREAS, the sole owner of record and the unincorporated territory described below would like to have annexed to the corporate limits of the City of Richmond, Kentucky approximately 140 acres of land adjacent to the City Limits and described as follows:

Beginning at a post in the north line of Duncannon Lane, a corner to Bruce Maggard, thence leaving the road with Maggard's line, 2 calls, N47°-15'W 2533.08 feet, N18°-30'W 785.40 feet to a post and corner to Mary Turpin, thence with Turpin's line, 2 calls, N70°-30'E 882.42 feet, N09°-30'W 451.44 feet, to a post and corner to the Ramsey Heirs, thence with the line of the Ramsey Heirs, 2 calls, S62°-00'E 1477.74 feet, S59°-16'-27"E 2096.24 feet to a post in the north line of the Richmond Industrial Park, a corner, thence with said north line of the Industrial Park and the north line of Duncannon Lane, 11 calls, S47°-05'49"W 1662.24 feet, S46°-37'-30"W 38.94 feet, S51°-15"W 62.04 feet, S53°-00'W 61.38 feet, S56°-00"W 66.00 feet, S58°-30'W 73.92 feet, S61°-00"W 21.12 feet, S62°-00"W 73.26 feet, S64°-30'W 62.04 feet, S67°-45'W 59.40 feet, S70°-00'W 106.26 feet to the beginning, containing approximately 140 acres.

WHEREAS, this annexation meets the requirements of KRS 81A.410, and the sole owner of record of such land has consented in writing to the annexation pursuant to KRS 81A.412, and,

WHEREAS, it is declared pursuant to KRS 81A.420 that it is desirable to annex this unincorporated contiguous territory and the Richmond Planning and Zoning Commission conducted a Public Hearing pursuant to KRS 100.209 for its recommendation as to zone classifications and any zoning map amendments.

NOW, THEREFORE BE IT ORDAINED by the Board of Commissioners of the City of Richmond that:

1. The unincorporated territory described above being adjacent and contiguous to the corporate limits of the City of Richmond, Kentucky, is hereby annexed to the boundaries of the City of Richmond.
2. The Richmond Planning and Zoning Commission conducted a Public Hearing pursuant to KRS 100.209 on April 27, 1994, and recommended that the zoning classification of the subject property be I-2.
3. The City Clerk cause this Ordinance to be published in accordance with the appropriate Kentucky Revised Statutes.

DATE OF FIRST READING: May 3, 1994

MOTION BY: Commissioner Hacker

SECONDED BY: Commissioner Strong

VOTE: YES NO

Commissioner Hacker x

	YES	NO
Commissioner Strong	x	
Commissioner Tobler	x	
Mayor Durham	x	


DATE OF SECOND READING: May 17, 1994

MOTION BY: Commissioner Hacker

SECONDED BY: Commissioner Strong

VOTE:	YES	NO
-------	-----	----

Commissioner Hacker	x	
Commissioner Jones	x	
Commissioner Strong	x	
Commissioner Tobler	x	
Mayor Durham	x	

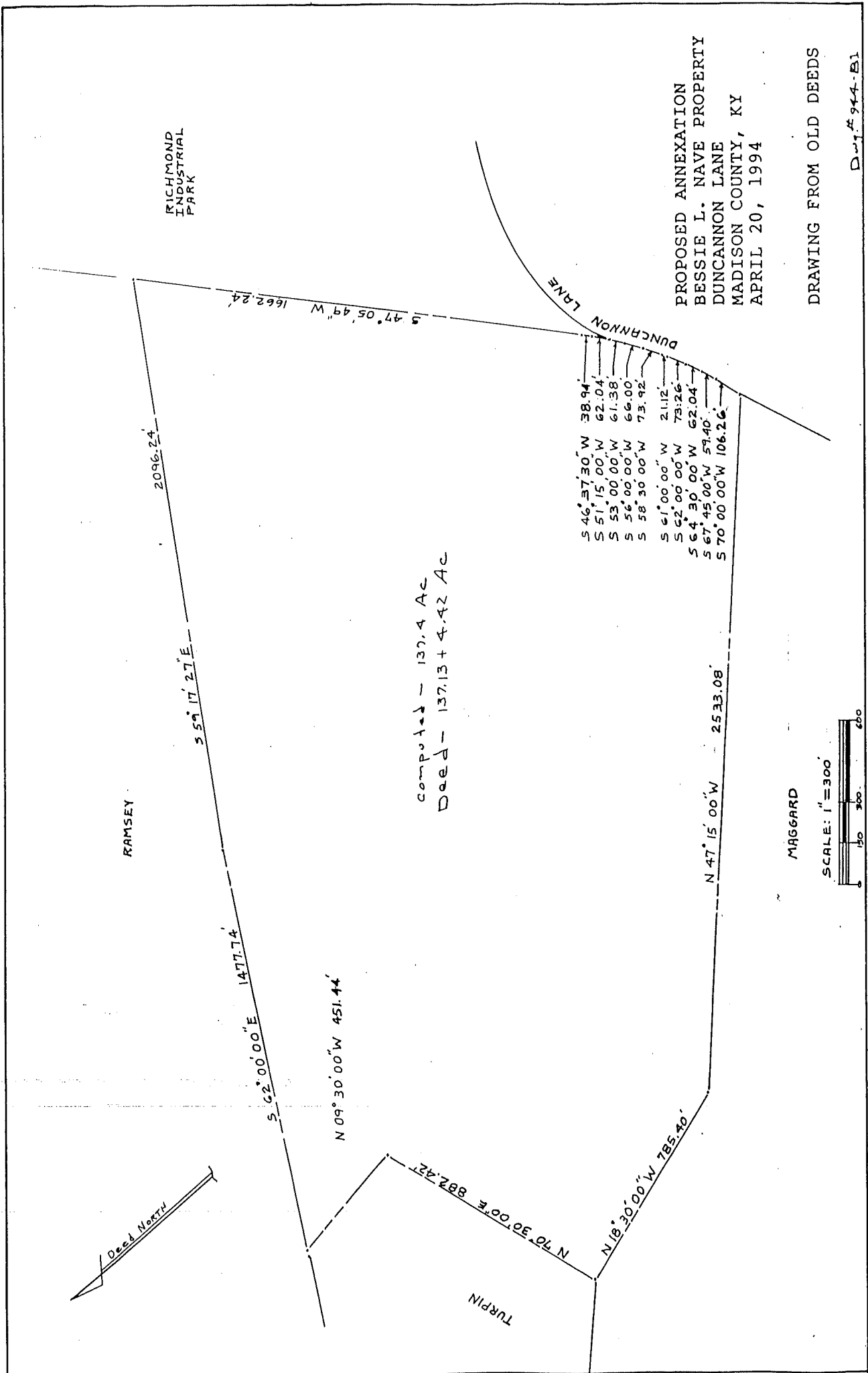


Mayor

Attest:



City Clerk



RICHMOND INDUSTRIAL PARK

RAMSEY

TURPIN

MAGGARD

DUNCANNON LANE

PROPOSED ANNEXATION
 BESSIE L. NAVE PROPERTY
 DUNCANNON LANE
 MADISON COUNTY, KY
 APRIL 20, 1994

DRAWING FROM OLD DEEDS

Dwg. # 944-B1

2096.24

S 59° 17' 27" E

S 62° 00' 00" E 1477.74'

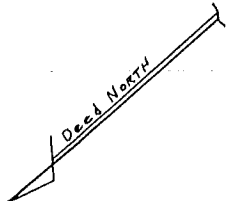
N 09° 30' 00" W 451.44'

computed - 137.4 Ac
 Deed - 137.13 + 4.42 Ac

S 47° 05' 49" W 1662.24'

- S 46° 37' 30" W 38.94'
- S 51° 15' 00" W 62.04'
- S 53° 00' 00" W 61.38'
- S 56° 00' 00" W 66.00'
- S 58° 30' 00" W 73.92'
- S 61° 00' 00" W 2.112'
- S 62° 00' 00" W 73.26'
- S 64° 30' 00" W 62.04'
- S 67° 45' 00" W 59.40'
- S 70° 00' 00" W 106.26'

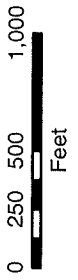
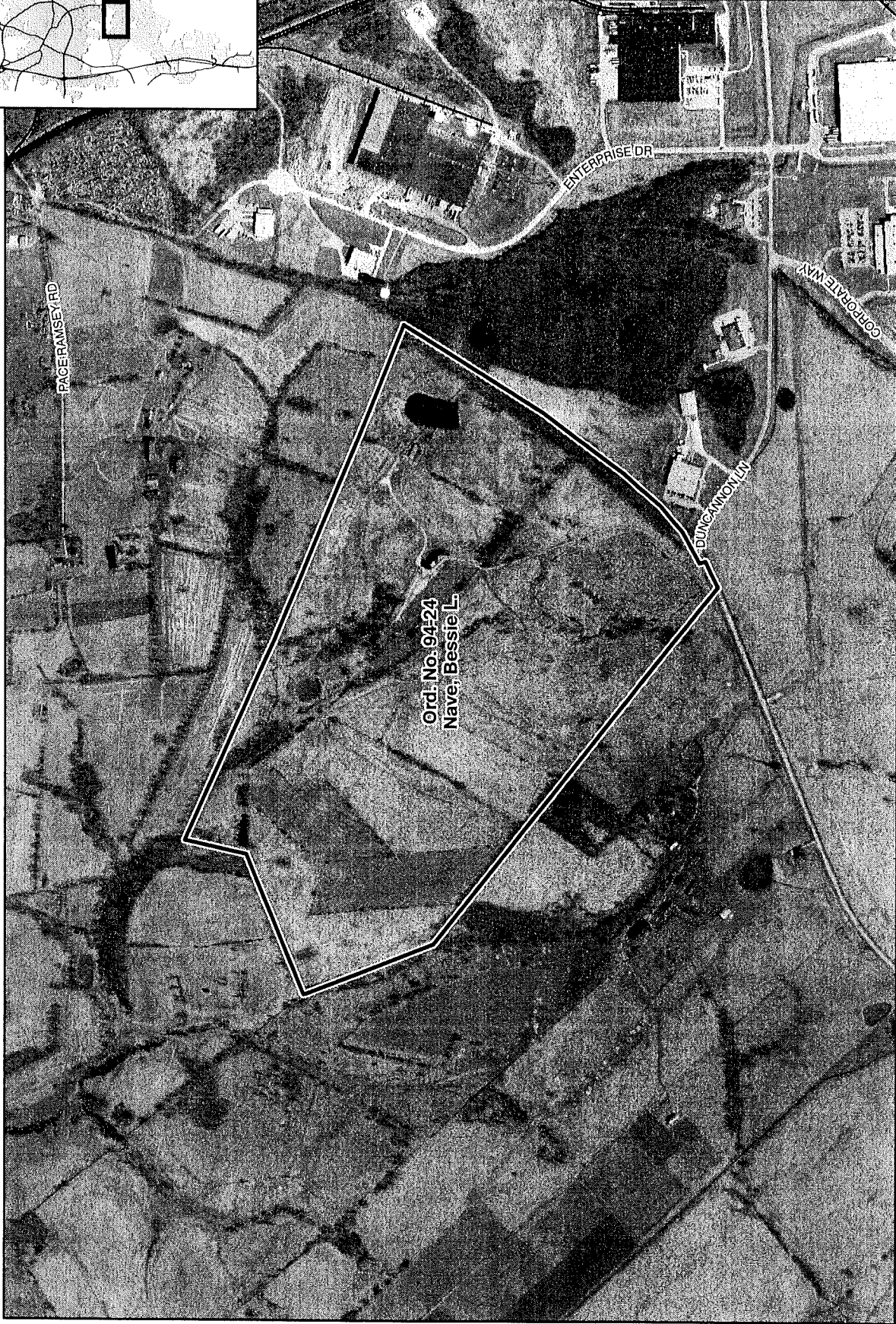
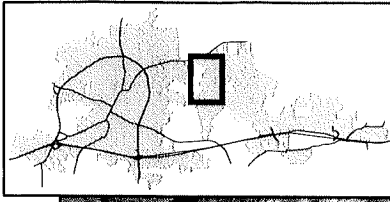
N 47° 15' 00" W 2533.08'



SCALE: 1" = 300'



Annexation Map, Richmond, Kentucky



This map represents approximate annexation boundaries but is not a legal survey.

Disclaimer: While the GIS Office strives to maintain accurate data, the City of Richmond does not guarantee its maps or data to be complete, accurate, current, or without error, nor does the City guarantee the fitness of the data for a particular use.

Richmond GIS
May 24, 2005

OVERSIZE MAP INCLUDED WITH
SUBMISSION.

To research the map, contact the
Office of Secretary of State
or the County Clerk.