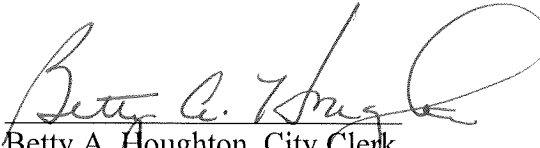


CERTIFICATE OF CITY CLERK

I, Betty A. Houghton, hereby certify that I am duly qualified and acting City Clerk of the City of Richmond, Kentucky, and that Ordinance 94-34 is a true and correct copy of this ordinance and was approved and adopted July 19, 1994 at a duly held City Commission meeting in accordance with all applicable requirements of Kentucky law, including KRS 61.810, 61.815, 61.820 and 61.825, that a quorum was present for this meeting and that said ordinance has not been modified, amended, revoked, or repealed and that same is now in full force and effect.

IN TESTIMONY WHEREOF, witness my signature as City Clerk and the official Seal of said City this the October 27, 2009.


Betty A. Houghton, City Clerk

(Seal of City)

RECEIVED AND FILED
DATE Oct 30, 2009

TREY CRAYSON
SECRETARY OF STATE
COMMONWEALTH OF KENTUCKY
BY Hardie Adkins

ORDINANCE NO. 94-34

AN ORDINANCE OF THE CITY OF RICHMOND, KENTUCKY, ANNEXING 1.65 ACRES OF LAND ADJACENT TO THE CITY LIMITS.

WHEREAS, the sole owner of record and the unincorporated territory described below would like to have annexed to the corporate limits of the City of Richmond, Kentucky 1.65 acres of land adjacent to the City Limits and described as follows:

A certain tract of land situated on the south side of an old county road east of U.S. Highway #25 and south of Richmond By Pass, bounded and described as follows:

Beginning at an iron pin in the south line of Old County Road, a corner to Frank Shoop Pontiac-Buick-GMC-Jeep-Eagle, thence with the south line of County Road S72°-40'E 236.1 feet, S79°-00'E 87.8 feet to an iron pin and corner to L. C. Taylor, thence with Taylor's line S4°-36'E 168.2 feet to an iron pin and corner to Mrs. J. B. Arnett, thence with Arnett's line S81°-40'W 374.6 feet to an iron pin and corner to Mrs. J. B. Arnett, thence continuing with Arnett and the line of Frank Shoop Pontiac-Buick-GMC-Jeep-Eagle N13°-14'W 46.6 feet to an iron pin and corner to Frank Shoop Pontiac-Buick-GMC-Jeep-Eagle, thence continuing with Shoop's line N76°-46'E 100.0 feet, N6°-35'W 243.1 feet to the beginning containing 1.65 acres.

WHEREAS, this annexation meets the requirements of KRS 81A.410, and the sole owner of record of such land has consented in writing to the annexation pursuant to KRS 81A.412, and,

WHEREAS, it is declared pursuant to KRS 81A.420 that it is desirable to annex this unincorporated contiguous territory and the Richmond Planning and Zoning Commission conducted a Public Hearing pursuant to KRS 100.209 for its recommendation as to zone classifications and any zoning map amendments.

NOW, THEREFORE BE IT ORDAINED by the Board of Commissioners of the City of Richmond, that:

1. The unincorporated territory described above being adjacent and contiguous to the corporate limits of the City of Richmond, Kentucky, is hereby annexed to the boundaries of the City of Richmond.
2. The Richmond Planning and Zoning Commission conducted a Public Hearing pursuant to KRS 100.209 on June 22, 1994, and recommended that the zoning classification of the subject property be B-3.
3. The City Clerk cause this Ordinance to be published in accordance with the appropriate Kentucky Revised Statutes.

DATE OF FIRST READING July 5, 1994

MOTION BY: Commissioner Tobler

SECONDED BY: Commissioner Hacker

VOTE: YES NO


Commissioner Hacker	x	
Commissioner Jones	x	
Commissioner Strong	x	
Commissioner Tobler	x	
Mayor Durham	x	

DATE OF SECOND READING: July 19, 1994

MOTION BY: Commissioner Tobler

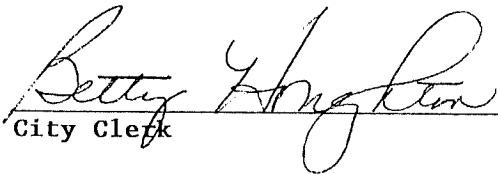
SECONDED BY: Commissioner Hacker

VOTE:	YES	NO
Commissioner Hacker	x	
Commissioner Jones	x	
Commissioner Strong	x	
Commissioner Tobler	x	
Mayor Durham	x	



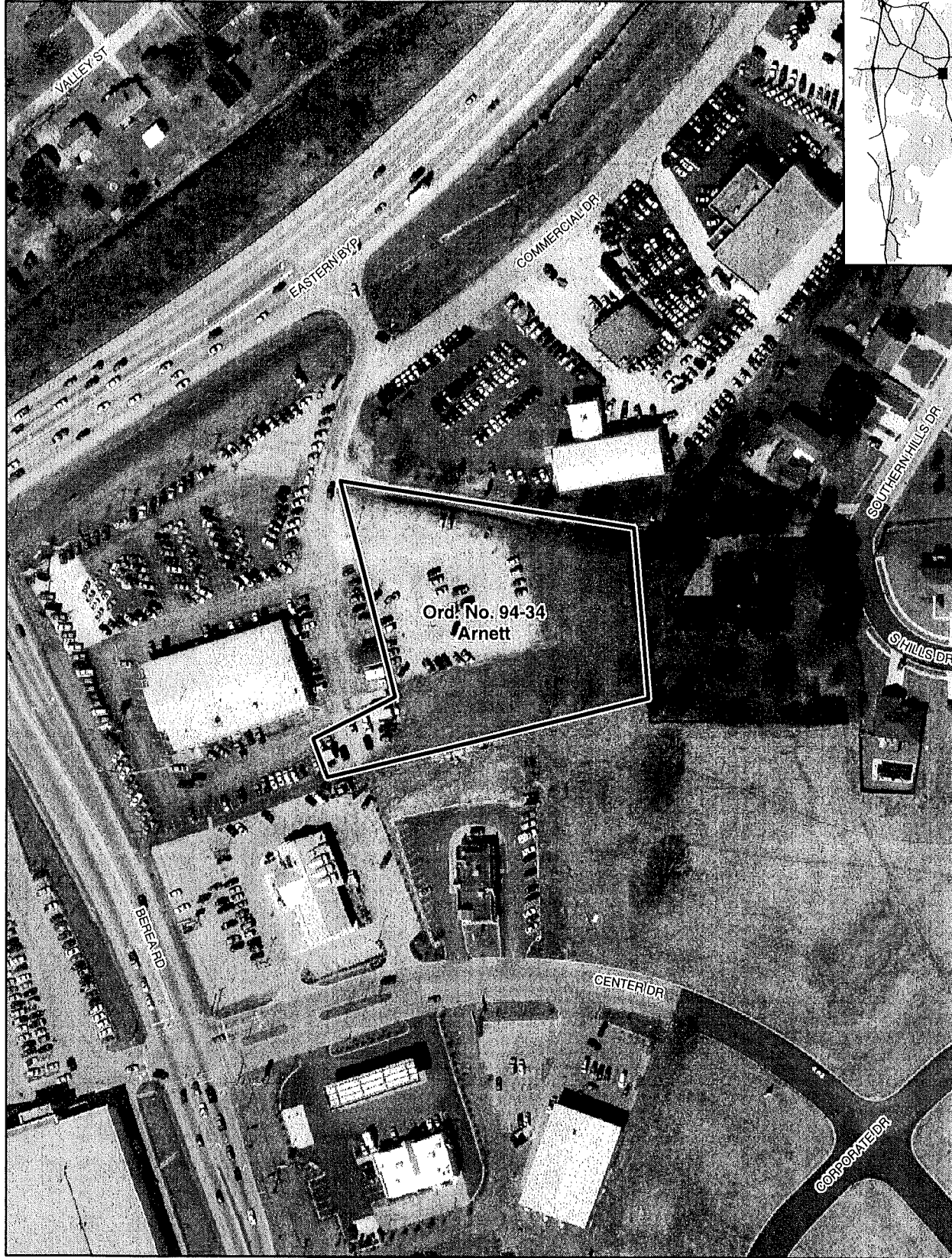
Mayor

Attest:



City Clerk

Annexation Map, Richmond, Kentucky

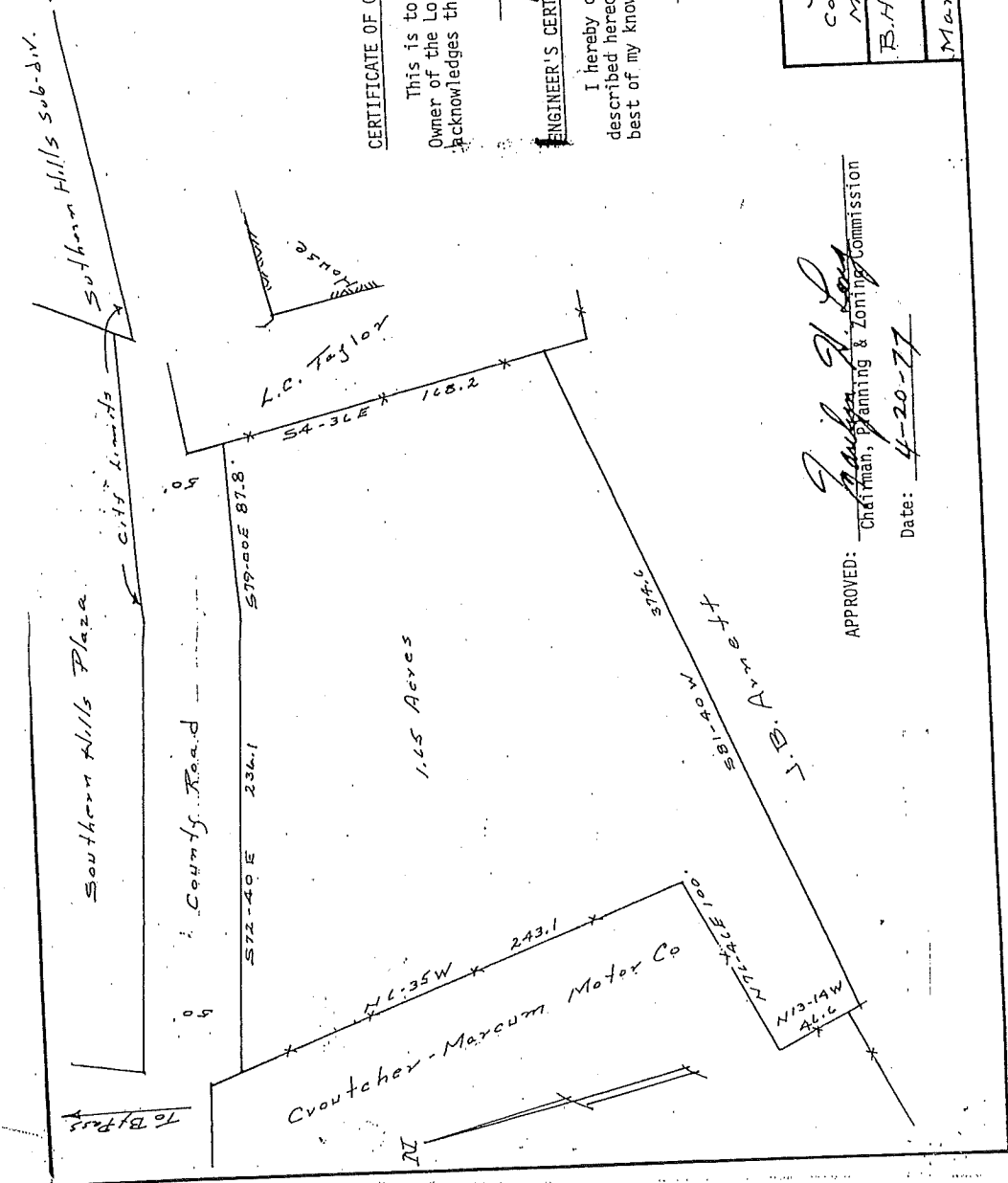
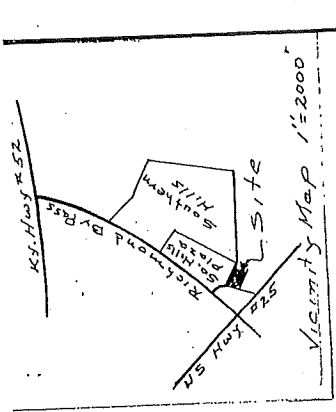


0 50 100 200
Feet

This map represents approximate annexation boundaries but is not a legal survey.

Richmond GIS
May 24, 2005

Disclaimer: While the GIS Office strives to maintain accurate data, the City of Richmond does not guarantee its maps or data to be complete, accurate, current, or without error, nor does the City guarantee the fitness of the data for a particular use.



CERTIFICATE OF OWNERSHIP

This is to certify that the undersigned is the Owner of the Lot as shown on this plat and hereby acknowledges the same to be a true plat.

J.B. Arnett

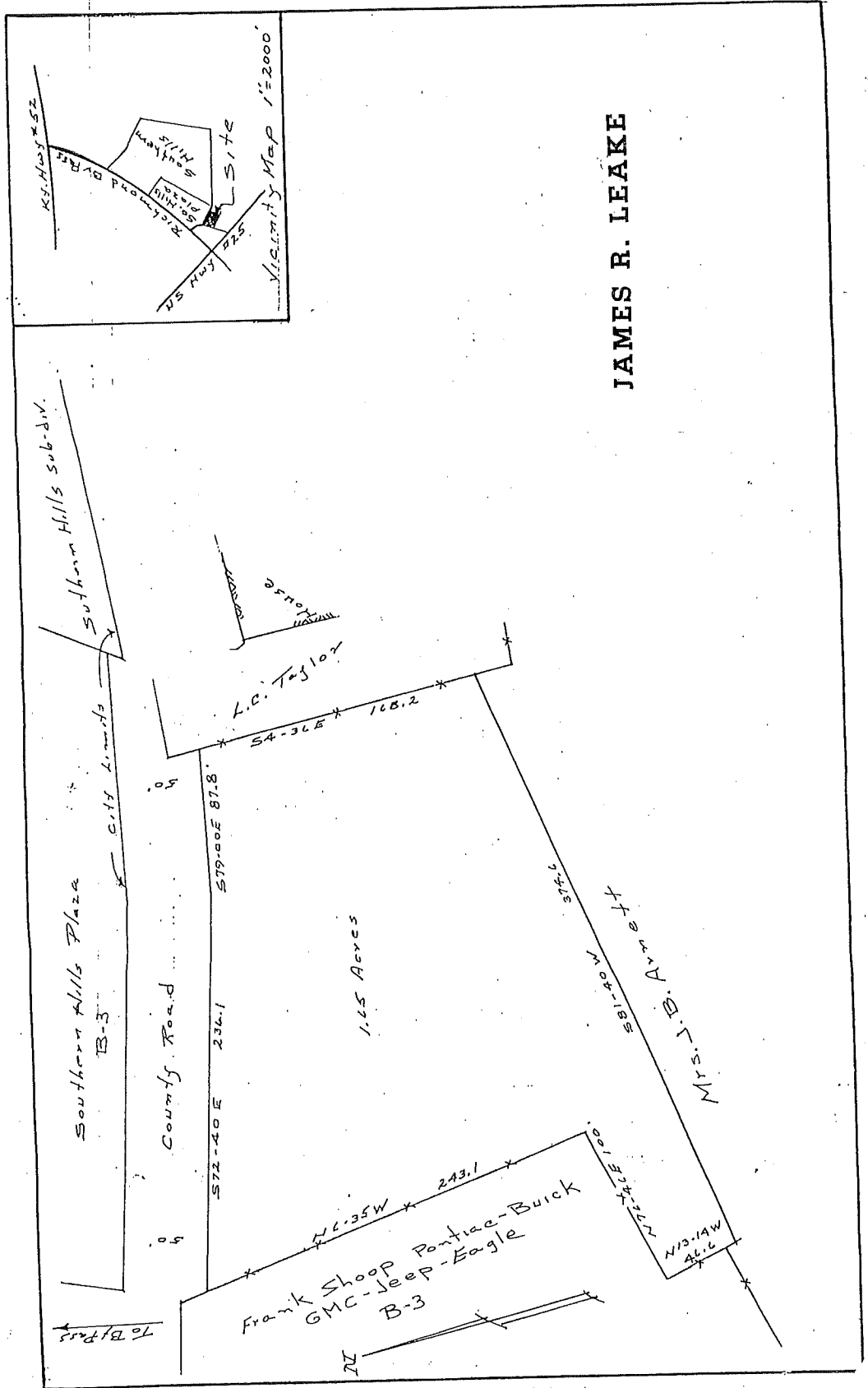
ENGINEER'S CERTIFICATE

I hereby certify that the plat shown and described hereon is a true and correct plat to the best of my knowledge.

A.A. [Signature]
Surveyor

J. B. Arnett Property
County Road off Richmond Bypass
Madison County, Kentucky
B.H. Luxon & Co Civil Engineers
Richmond, Kentucky
March 1977 1:60 Dwg # 773-A7...

APPROVED: *J. [Signature]*
Chairman, Planning & Zoning Commission
Date: 4-20-77



JAMES R. LEAKE