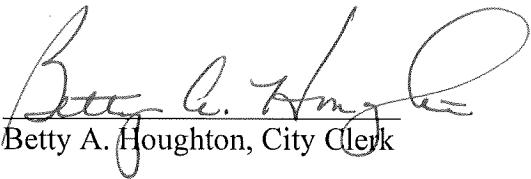


**CERTIFICATE OF CITY CLERK**

I, Betty A. Houghton, hereby certify that I am duly qualified and acting City Clerk of the City of Richmond, Kentucky, and that Ordinance 94-40 is a true and correct copy of this ordinance and was approved and adopted September 27, 1994 at a duly held City Commission meeting in accordance with all applicable requirements of Kentucky law, including KRS 61.810, 61.815, 61.820 and 61.825, that a quorum was present for this meeting and that said ordinance has not been modified, amended, revoked, or repealed and that same is now in full force and effect.

**IN TESTIMONY WHEREOF**, witness my signature as City Clerk and the official Seal of said City this the October 27, 2009.

  
Betty A. Houghton, City Clerk

(Seal of City)

RECEIVED AND FILED  
DATE Oct. 30, 2009

TREY GRAYSON  
SECRETARY OF STATE  
COMMONWEALTH OF KENTUCKY  
BY Kandice Adams

ORDINANCE NO. 94-40

**AN ORDINANCE OF THE CITY OF RICHMOND, KENTUCKY, ANNEXING 17.69 ACRES OF LAND ADJACENT TO THE CITY LIMITS.**

WHEREAS, the sole owner of record and the unincorporated territory described below would like to have annexed to the corporate limits of the City of Richmond, Kentucky 17.69 acres of land adjacent to the City Limits and described as follows:

Tract 1

Beginning at an iron pin at the southeast corner of Lot E-4 Carey Acres, Block "B", in the line of South Bluegrass Junction, thence with the line of South Bluegrass Junction S35°-53'-07"W 490.0 feet to an iron pin and new corner to Jerome Tudor, thence a new line with Tudor (Proposed R-1C) N54°-06'-53"W 580.36 feet to an iron pin and corner to Raymond Anderson, thence with Anderson's line N35°-51'-39"E 490.71 feet to an iron pin and corner to Carey Acres Block "B" thence with Carey Acres S54°-02'-39"E 580.57 feet to the beginning containing 6.534 acres.

Tract 2

Beginning at an iron pin at the line of South Bluegrass Junction at the southeast corner of the proposed R-2, thence with said south Bluegrass Junction S35°-53'-07"W 839.63 feet to an iron pin and new corner to Jerome Tudor, thence a new line with Tudor N54°-02'-22"W 580.00 feet to a post and corner to Raymond Anderson, thence with Anderson's line N35°-51'-39"E 838.87 feet to an iron pin and corner to proposed R-2 zoning, thence with the line of said proposed R-2 zoning, S54°-06'-53"E 580.36 feet to the beginning containing 11.178 acres.

WHEREAS, this annexation meets the requirements of KRS 81A.410, and the sole owner of record of such land has consented in writing to the annexation pursuant to KRS 81A.412, and,

WHEREAS, it is declared pursuant to KRS 81A.420 that it is desirable to annex this unincorporated contiguous territory and the Richmond Planning and Zoning Commission conducted a Public Hearing pursuant to KRS 100.209 for its recommendation as to zone classifications and any zoning map amendments.

**NOW, THEREFORE BE IT ORDAINED** by the Board of Commissioners of the City of Richmond, that:

1. The unincorporated territory described above being adjacent and contiguous to the corporate limits of the City of Richmond, Kentucky, is hereby annexed to the boundaries of the City of Richmond.
2. The Richmond Planning and Zoning Commission conducted a Public Hearing pursuant to KRS 100.209 on August 10, 1994, and recommended that the zoning classification of the subject property be R-2 and R-1-B.
3. The City Clerk cause this Ordinance to be published in accordance with the appropriate Kentucky Revised Statutes.

DATE OF FIRST READING September 13, 1994

MOTION BY: Commissioner Hacker

SECONDED BY: Commissioner Jones


VOTE:	YES	NO
Commissioner Hacker	x	
Commissioner Jones	x	
Commissioner Strong	x	
Commissioner Tobler	x	
Mayor Durham	x	

DATE OF SECOND READING: September 27, 1994

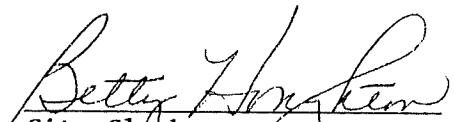
MOTION BY: Commissioner Tobler

SECONDED BY: Commissioner Jones

VOTE:	YES	NO
Commissioner Hacker	x	
Commissioner Jones	x	
Commissioner Strong	x	
Commissioner Tobler	x	
Mayor Durham		Absent

  
\_\_\_\_\_  
Mayor

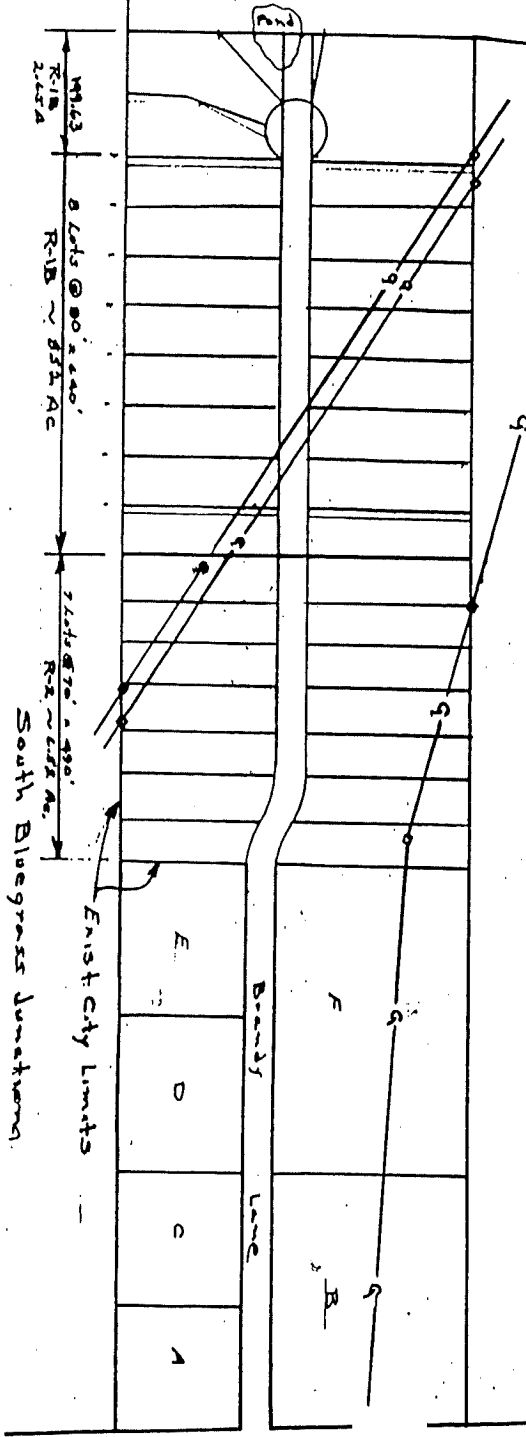
Attest:

  
\_\_\_\_\_  
City Clerk

George Gumbert

Jerome Tudor

Raymond Anderson



191.63 R-1B ~ 242.5 A  
 8 Lots @ 80' x 440' R-1B ~ 851.1 AC  
 71.42 @ 70° ~ 990' R-2 ~ 1222 AC  
 South Bluegrass Junction

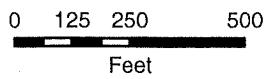
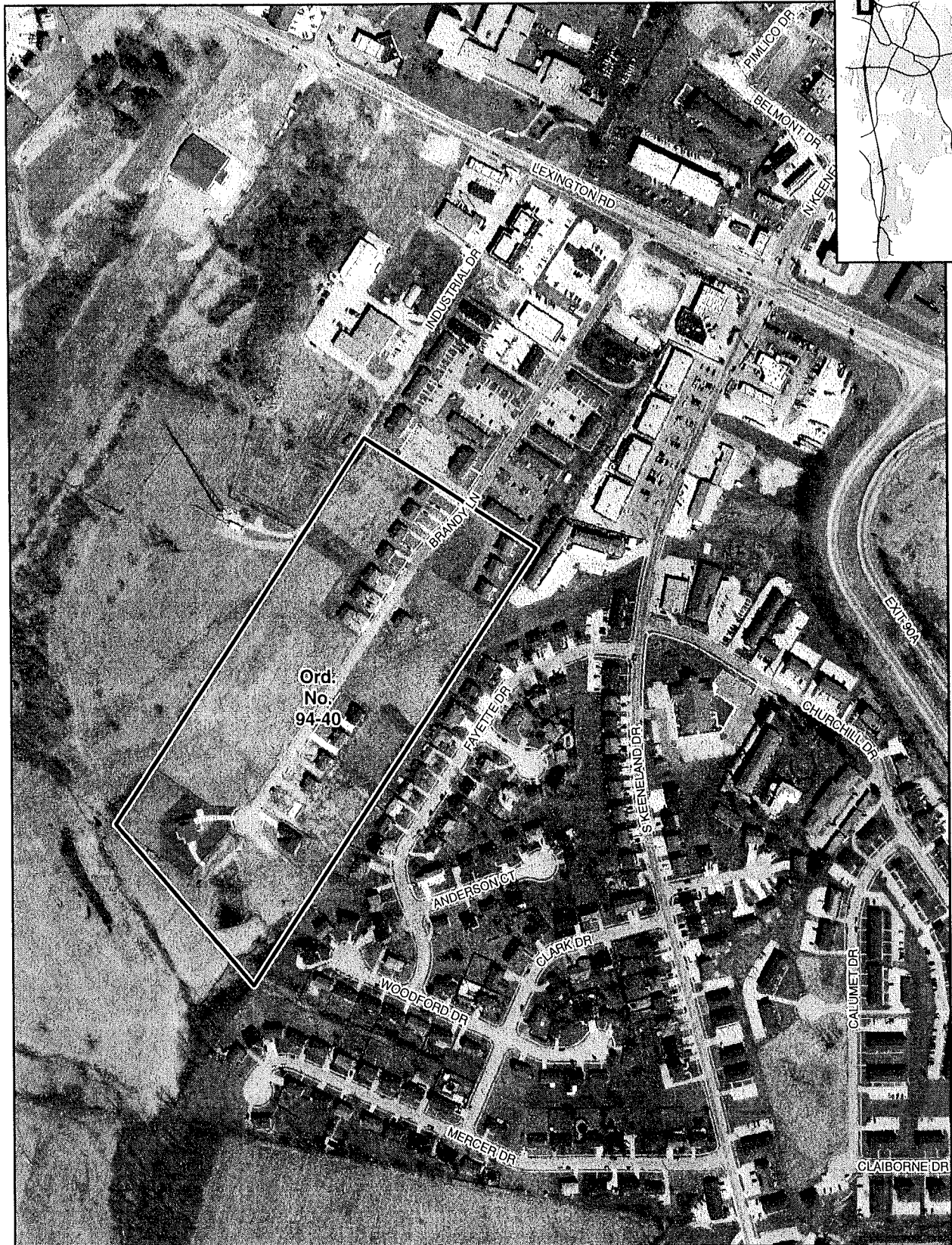
First City Limits

Brandy Lane

**JEROME TUDOR**

191.63 R-1B ~ 242.5 A

# Annexation Map, Richmond, Kentucky



This map represents approximate annexation boundaries but is not a legal survey.

Richmond GIS  
May 24, 2005

Disclaimer: While the GIS Office strives to maintain accurate data, the City of Richmond does not guarantee its maps or data to be complete, accurate, current, or without error, nor does the City guarantee the fitness of the data for a particular use.

OVERSIZE MAP INCLUDED WITH  
SUBMISSION.

To research the map, contact the  
Office of Secretary of State  
or the County Clerk.