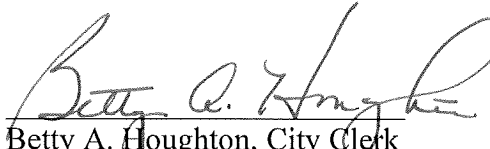


CERTIFICATE OF CITY CLERK

I, Betty A. Houghton, hereby certify that I am duly qualified and acting City Clerk of the City of Richmond, Kentucky, and that Ordinance 91-21 is a true and correct copy of this ordinance and was approved and adopted April 2, 1991 at a duly held City Commission meeting in accordance with all applicable requirements of Kentucky law, including KRS 61.810, 61.815, 61.820 and 61.825, that a quorum was present for this meeting and that said ordinance has not been modified, amended, revoked, or repealed and that same is now in full force and effect.

IN TESTIMONY WHEREOF, witness my signature as City Clerk and the official Seal of said City this the October 27, 2009.


Betty A. Houghton, City Clerk

(Seal of City)

RECEIVED AND FILED
DATE Dec. 4, 2009

TREY GRAYSON
SECRETARY OF STATE
COMMONWEALTH OF KENTUCKY
BY Kandice Adkins

ORDINANCE NO. 91-21

AN ORDINANCE OF THE CITY OF RICHMOND, KENTUCKY, ANNEXING TO THE CORPORATE LIMITS OF THE CITY OF RICHMOND 59.73 ACRES OF LAND ADJACENT TO THE CITY LIMITS AND ON THE EAST SIDE OF THE RICHMOND BY PASS AND SOUTHERN HILLS SUBDIVISION.

WHEREAS, the owner of record of the unincorporated territory described below would like to have annexed to the corporate limits of the City of Richmond, Kentucky, 59.73 acres of land adjacent to the City Limits and described as follows:

A certain tract of land, located 1,200 feet east of the Richmond By-Pass, approximately 1,000 feet south of Kentucky Highway 52 (Irvine Road), in Richmond, Madison County, Kentucky, and being bounded by survey (Job No. 3199) made August 29, 1988 by Charles E. Black, a licensed land surveyor, (L.S. 670), and further described as follows:

Beginning at a steel pin, said pin being the southwest corner of the Cornelison property and common corner to James Shannon; thence with the line of Cornelison S82°20'38"E 779.74 feet to a steel pin in the line of the City of Richmond; thence leaving Cornelison with the line of the City of Richmond property S06°54'02"W 2103.68 feet to a steel pin and corner to Mrs. J. B. Arnett; thence leaving the City of Richmond property with the lines of Arnett two (2) calls: N72°05'59"W 1056.87 feet to a steel pin; thence N83°14'08"W 232.31 feet to a steel pin and corner to Southern Hills Subdivision; thence leaving Arnett with the line of Southern Hills Subdivision N05°53'06"W 1202.20 feet to a steel pin; thence leaving the line of Southern Hills Subdivision with a new line dividing the lands of Shannon N52°30'02"E 1058.32 feet to a steel pin and point of beginning and containing 59.73 acres.

WHEREAS, Ordinance No. 91-12 declaring intent to annex said tract of land pursuant to KRS 81A.410, 81A.420, and 100.209 was duly enacted on the 21st day of February, 1991, and the Richmond Planning and Zoning Commission after a public hearing on the 13th day of March, 1991, with due notice as required by law, has recommended a zoning classification and official map amendment of R1-B and R-3 for annexation of the areas marked on the attached map.

NOW THEREFORE, BE IT ORDAINED by the Board of Commissioners of the City of Richmond that:

1. The unincorporated territory described above being adjacent and contiguous to the corporate limits of the City of Richmond, Kentucky, is hereby annexed to the boundaries of the City of Richmond, and is zoned R1-B and R-3 as shown on the attached map.

2. The Codes Enforcement Officer make the appropriate changes to the Official Zoning Map of the City of Richmond.

3. The City Clerk cause this ordinance to be published in accordance with the appropriate Kentucky Revised Statutes.

DATE OF FIRST READING	<u>March 19, 1991</u>
MOTION BY	<u>Commissioner Strong</u>
SECONDED BY	<u>Commissioner Hacker</u>

VOTE: YES NO

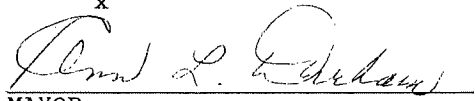
Commissioner Carrier x
Commissioner Hacker x
Commissioner Strong x
Commissioner Tobler x
Mayor Durham x

DATE OF SECOND READING April 2, 1991

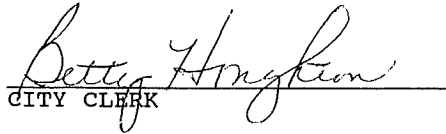
MOTION BY Commissioner Tobler

SECONDED BY Commissioner Carrier

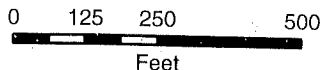
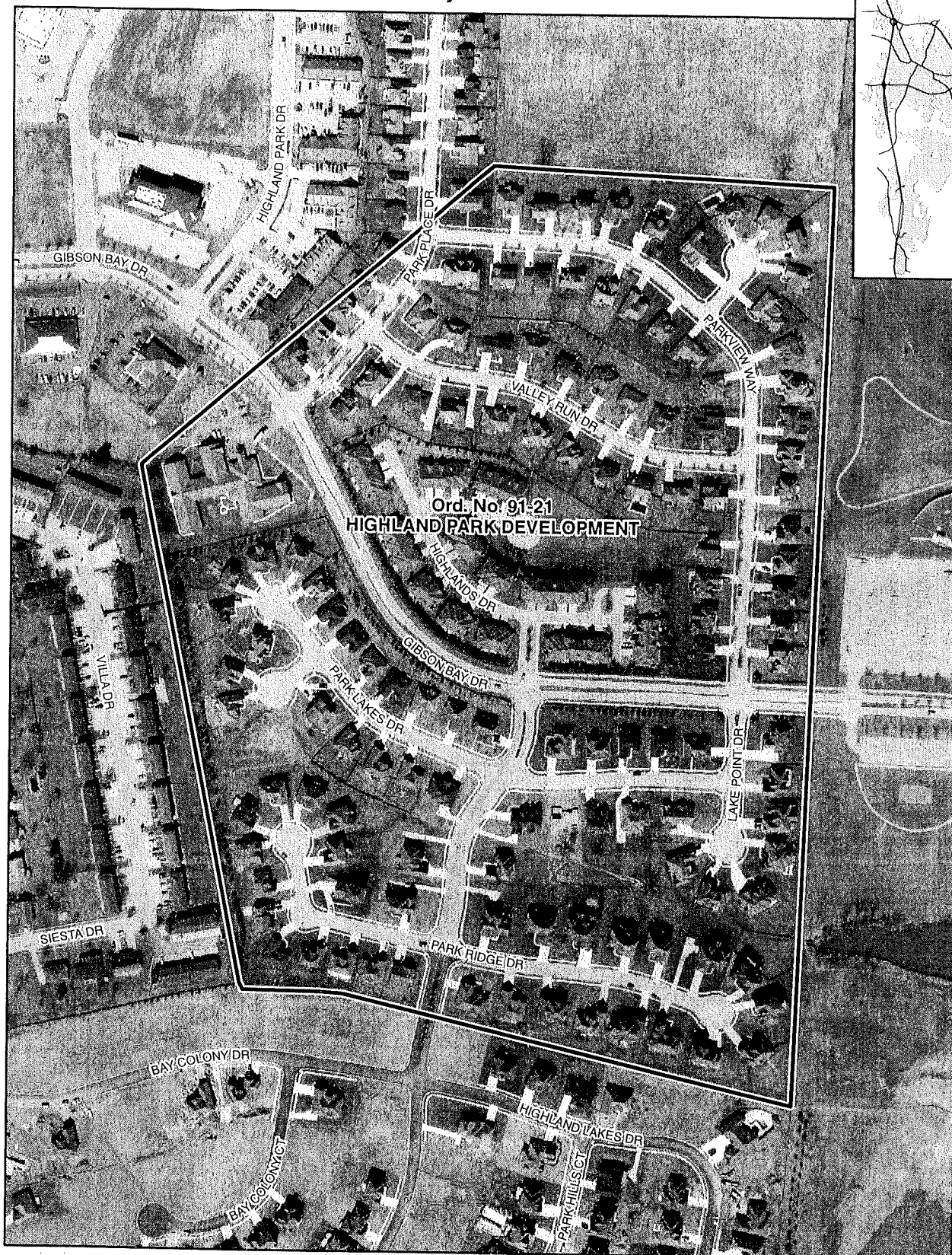
VOTE:	YES	NO
Commissioner Carrier	x	
Commissioner Hacker	x	
Commissioner Strong	x	
Commissioner Tobler	x	
Mayor Durham	x	


Donald L. Edwards
MAYOR

ATTEST:


Betty Hingston
CITY CLERK

Annexation Map, Richmond, Kentucky



This map represents approximate annexation boundaries but is not a legal survey.

Richmond GIS
May 25, 2005

Disclaimer: While the GIS Office strives to maintain accurate data, the City of Richmond does not guarantee its maps or data to be complete, accurate, current, or without error, nor does the City guarantee the fitness of the data for a particular use.

OVERSIZE MAP INCLUDED WITH
SUBMISSION.

To research the map, contact the
Office of Secretary of State
or the County Clerk.