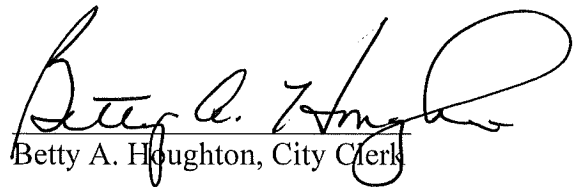


CERTIFICATE OF CITY CLERK

I, Betty A. Houghton, hereby certify that I am duly qualified and acting City Clerk of the City of Richmond, Kentucky, and that Ordinance 91-10 is a true and correct copy of this ordinance and was approved and adopted February 5, 1991 at a duly held City Commission meeting in accordance with all applicable requirements of Kentucky law, including KRS 61.810, 61.815, 61.820 and 61.825, that a quorum was present for this meeting and that said ordinance has not been modified, amended, revoked, or repealed and that same is now in full force and effect.

IN TESTIMONY WHEREOF, witness my signature as City Clerk and the official Seal of said City this the October 30, 2009.


Betty A. Houghton, City Clerk

(Seal of City)

RECEIVED AND FILED
DATE December 29, 2009

TREV GRAYSON
SECRETARY OF STATE
COMMONWEALTH OF KENTUCKY
BY Kandice Alderson

ORDINANCE NO. 91-10

AN ORDINANCE OF THE CITY OF RICHMOND, KENTUCKY AUTHORIZING THE ANNEXATION OF A PORTION OF DUNCANNON ROAD TO MEET THE GRANT REQUIREMENTS OF THE ECONOMIC DEVELOPMENT ADMINISTRATION SUBJECT TO THE APPROVAL OF THE CITY'S EDA GRANT APPLICATION FOR PHASE 2B OF THE DEVELOPMENT OF THE 175 ACRE RICHMOND INDUSTRIAL PARK SOUTH LOCATED ON DUNCANNON LANE.

WHEREAS, the City of Richmond and the Richmond-Madison County Industrial Corporation, Inc. (RMCIC), are jointly developing the Richmond Industrial Park South which has recently been annexed to the City, and,

WHEREAS, the City of Richmond and RMCIC have been invited to jointly submit a Full Application to the Economic Development Administration (EDA) for a \$750,000 EDA Grant to complete Phase 2B of the Industrial Park which has a project cost of \$1,500,000, and,

WHEREAS, Duncannon Road is a County Road which provides direct access to several industrial lots in the Richmond Industrial Park South. Accordingly, some 4,760 linear feet of Duncannon Road serves as a direct industrial park local access road. Some 2,600 linear feet of this local access road requires extensive rebuilding to handle large trucks serving these lots. A portion of the aforementioned EDA Grant Application is rescheduled for use to rebuild the subject 2,600 linear feet of road, however, project funds can only be used on projects owned and maintained by the grant applicants.

WHEREAS, the Madison County Fiscal Court and the City of Richmond mutually agree that the proper transfer of ownership and maintenance of the subject 2,600 linear feet of Duncannon Road from the County to the City is in the best interests of the project and the community.

NOW, THEREFORE, BE IT ORDAINED that the City of Richmond annex 2,600 linear feet of Duncannon Road beginning at Station 13+00 (+or -) (Station 13+00 is located at a point in the centerline of Duncannon Road, North 445.5 feet from the centerline of the railroad bridge and railroad tracks) and ending at Station 39+00 (+ or -), in the vicinity of the drive entrance to P.K. Tool, and further, that said action is subject to approval of the EDA Grant for the Industrial Park.

DATE OF FIRST READING January 22, 1991

MOTION BY Commissioner Tobler

SECONDED BY Commissioner Strong

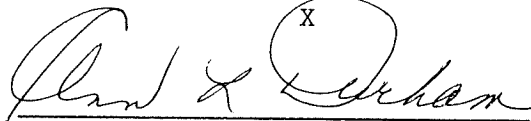
VOTE:	YES	NO
Commissioner Carrier	x	
Commissioner Hacker	x	
Commissioner Strong	x	
Commissioner Tobler	x	
Mayor Durham	x	

DATE OF SECOND READING February 5, 1991


MOTION BY Commissioner Strong

SECONDED BY Commissioner Carrier

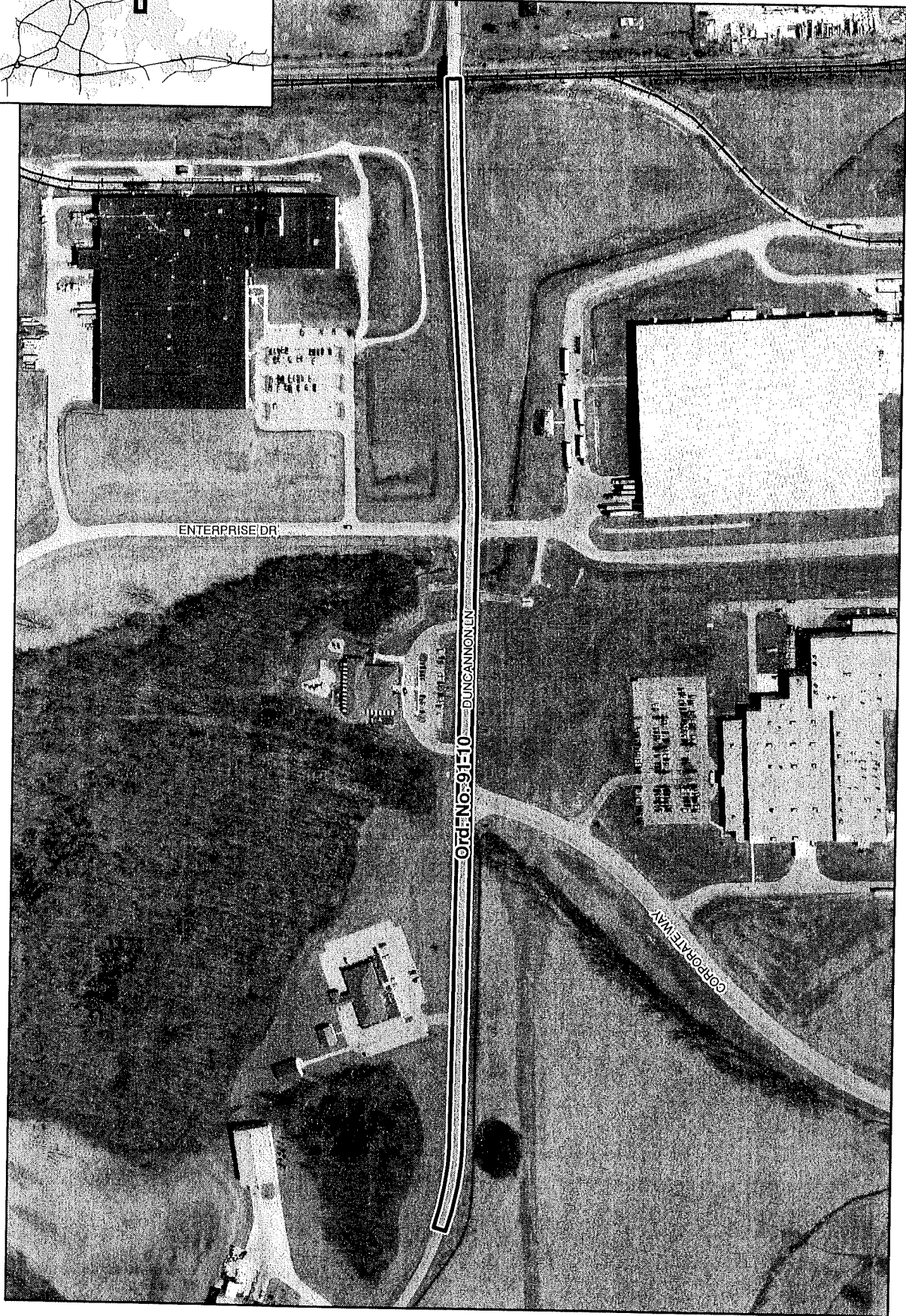
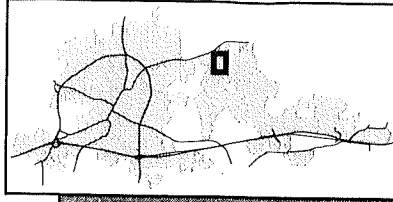
VOTE:	YES	NO
Commissioner Carrier	X	
Commissioner Hacker	X	
Commissioner Strong	X	
Commissioner Tobler	X	
Mayor Durham	X	


Paul W. Durham
 Mayor

Attest:


Betty Houghton
 City Clerk

Annexation Map, Richmond, Kentucky



This map represents approximate annexation boundaries but is not a legal survey.

Disclaimer: While the GIS Office strives to maintain accurate data, the City of Richmond does not guarantee its maps or data to be complete, accurate, current, or without error, nor does the City guarantee the fitness of the data for a particular use.

Richmond GIS
May 25, 2005

OVERSIZE MAP INCLUDED WITH
SUBMISSION.

To research the map, contact the
Office of Secretary of State
or the County Clerk.