

JAMES HITE HAYS

ATTORNEY AT LAW

521 MAIN STREET

P. O. BOX 88

SHELBYVILLE, KENTUCKY 40066-0088

TELEPHONE
(502) 633-3534

FAX
(502) 633-3577

November 5, 2008

RECEIVED AND FILED
DATE Nov 7, 2008

Secretary of State Office
Capital Annex, Room T40
Frankfort, KY 40601

TREY GRAYSON
SECRETARY OF STATE
COMMONWEALTH OF KENTUCKY
BY Kandie Allison

ATTN: MS. KANDIE ATKINSON

IN RE: City of Simpsonville Annexation Ordinance No. 83-5
(100 acres Old Veechdale Road & KY Hwy. 1848 Buck Creek Road)

Dear Ms. Atkinson:

In compliance with KRS 81A.470 and 81A.475, you will find enclosed a certified copy of a recent annexation by the City of Simpsonville which was published in accordance with Chapter 424 on November 11, 1983. This certification includes a detailed map of the annexed property and a metes and bounds description of said property for your records. Copies of this Annexation Ordinance will be filed in the Shelby County Clerk's Office, Secretary of State's Office and the Governor's Office of Local Development in accordance with the statutes.

If you have any questions whatsoever, please feel free to contact me at your convenience.

Very truly yours,



James Hite Hays
City of Simpsonville Attorney

JHH/kvj

Enclosure

cc City of Simpsonville
Brad McDowell, Shelby County PVA

CITY OF SIMPSONVILLE
CERTIFICATION OF ANNEXATION ORDINANCE

I certify that I am the duly qualified City Clerk of the City of Simpsonville, and the attached City of Simpsonville Ordinance No. 83-5 is a true, correct and complete copy duly adopted by the City Commission at a duly convened meeting held on November 8, 1983, all as appears in the official records of said City.

Witness my hand, this 17th day of November, 2008.

CITY OF SIMPSONVILLE

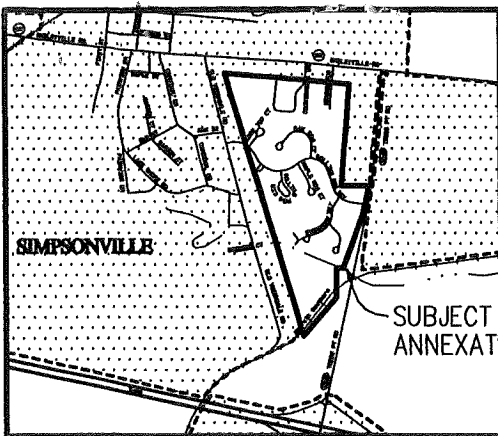
BY: Debbie Batliner
DEBBIE BATLINER, CITY CLERK

ATTEST:

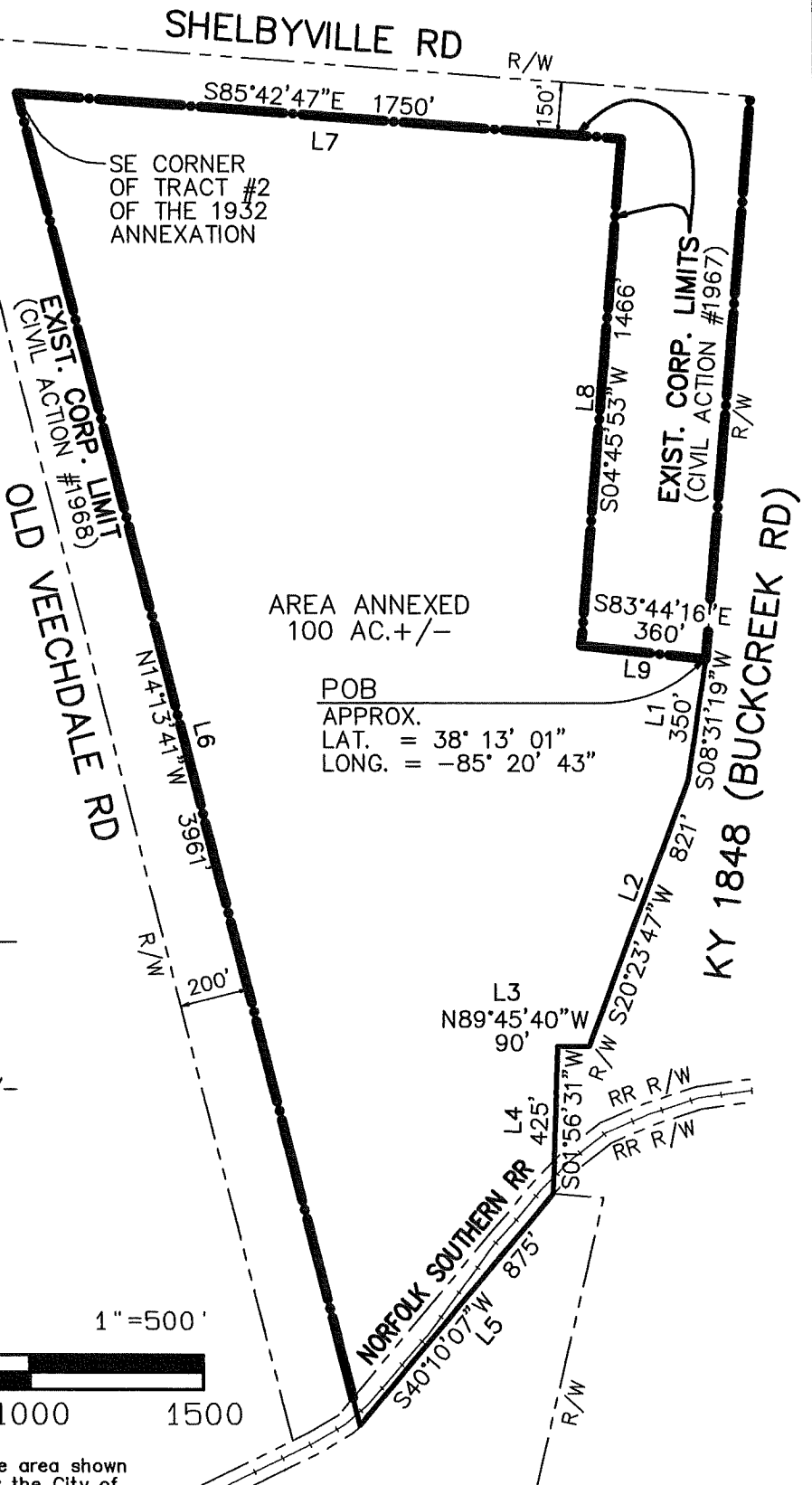
James Hite Hays
JAMES HITE HAYS, CITY ATTORNEY

RECEIVED AND FILED
DATE Nov 7, 2008

TREY GRAYSON
SECRETARY OF STATE
COMMONWEALTH OF KENTUCKY
BY: Janice Adkins



VICINITY MAP



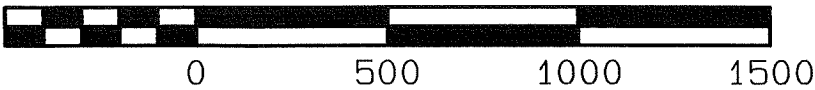
AREA ANNEXED
100 AC. +/-

POB
APPROX.
LAT. = 38° 13' 01"
LONG. = -85° 20' 43"

CALLS AS PROVIDED IN ANNEXATION DESCRIPTION

- L1 - southerly 350' +/-
- L2 - southwesterly 830.45'
- L3 - westerly 92' +/-
- L4 - southerly 425' +/-
- L5 - southwesterly 875'
- L6 - northwesterly 7800' +/-
- L7 - easterly 1750' +/-
- L8 - southerly 1466' +/-
- L9 - easterly 360'

GRAPHIC SCALE 1" = 500'



I hereby certify that the graphic depiction of the area shown hereon for the annexation of 100 acres +/- by the City of Simpsonville was prepared from existing instruments of record as indicated by the attached annexation ordinance adopted by the City of Simpsonville. The boundary calls were adjusted from the annexation description to match the corporate boundaries of record in the office of the Secretary of State. This drawing does not represent a recent field survey meeting minimum current standards.

10/29/2008 *Kerry P. Magan*
Date Licensed Professional Surveyor

STATE OF KENTUCKY
KERRY P. MAGAN
1994
LICENSED
PROFESSIONAL
LAND SURVEYOR

**GRAPHICAL DEPICTION
OF TERRITORY ANNEXED
NOVEMBER 8, 1983 BY
ORDINANCE NO.: 83-5**