

JAMES HITE HAYS

ATTORNEY AT LAW

521 MAIN STREET

P. O. BOX 88

SHELBYVILLE, KENTUCKY 40066-0088

TELEPHONE
(502) 633-3534

FAX
(502) 633-3577

RECEIVED AND FILED
DATE Dec. 10, 2008

November 5, 2008

TREY GRAYSON
SECRETARY OF STATE
COMMONWEALTH OF KENTUCKY
BY Kandie Atkinson

Secretary of State Office
Capital Annex, Room T40
Frankfort, KY 40601

ATTN: MS. KANDIE ATKINSON

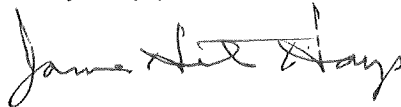
IN RE: City of Simpsonville Annexation Ordinance No. 2000-001
(12 acres owned by Shelby County Board of Education)

Dear Ms. Atkinson:

In compliance with KRS 81A.470 and 81A.475, you will find enclosed a certified copy of a recent annexation by the City of Simpsonville which was published in accordance with Chapter 424 on March 22, 2000. Copies of this Annexation Ordinance will be filed in the Shelby County Clerk's Office, Secretary of State's Office and the Governor's Office of Local Development in accordance with the statutes.

If you have any questions whatsoever, please feel free to contact me at your convenience.

Very truly yours,



James Hite Hays
City of Simpsonville Attorney

JHH/krj

Enclosure

cc City of Simpsonville
Brad McDowell, Shelby County PVA

RESOLUTION 2008-004

A RESOLUTION ADOPTING A MAP EXHIBIT TO CLARIFY THE
DESCRIPTION OF TERRITORY PREVIOUSLY ANNEXED BY
ORDINANCE NO. 2000-001

WHEREAS, the City of Simpsonville, Kentucky, has enacted numerous ordinances annexing property into the corporate limits of the City of Simpsonville; and

WHEREAS, each individual annexation contains a description often prepared by now unknown individuals, and further references documentation that is no longer in existence; and

WHEREAS, the territory described in said descriptions cannot be mapped without using additional local knowledge; and

WHEREAS, the City wishes to comply with the requirements of Amended KRS 81A.470 effective July 13, 2004; and

WHEREAS, the City does not intend to amend or replace its prior ordinance annexing, but rather to interpret the defined boundaries of the territory previously annexed and adopt a modern and geographically identifiable map exhibit of the territory previously annexed.

NOW THEREFORE, BE IT RESOLVED BY THE CITY COMMISSION OF THE CITY OF SIMPSONVILLE, KENTUCKY:

SECTION 1. That the City Commission of the City of Simpsonville hereby adopts the following map exhibit, (Exhibit "A") attached hereto as prepared by Kerry P. Magan, Licensed Professional Land Surveyor No. 1994 as a geographically identifiable depiction of the property previously annexed into the corporate city limits of the City of Simpsonville, by Ordinance 2000-001, dated March 9, 2000, a copy of which is attached hereto as Exhibit "B", as the official legal map for all purposes when referencing this prior annexation.

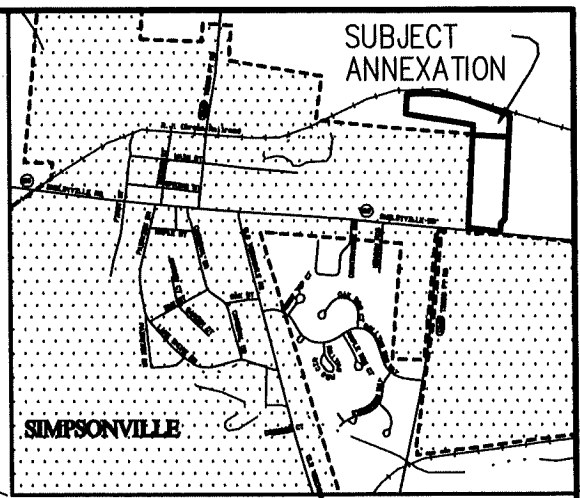
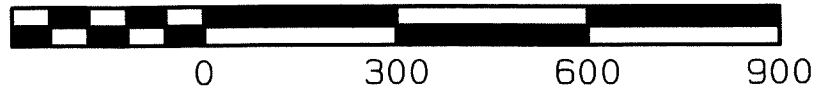
CITY OF SIMPSONVILLE

BY: 
STEVE EDEN, MAYOR

ATTEST:

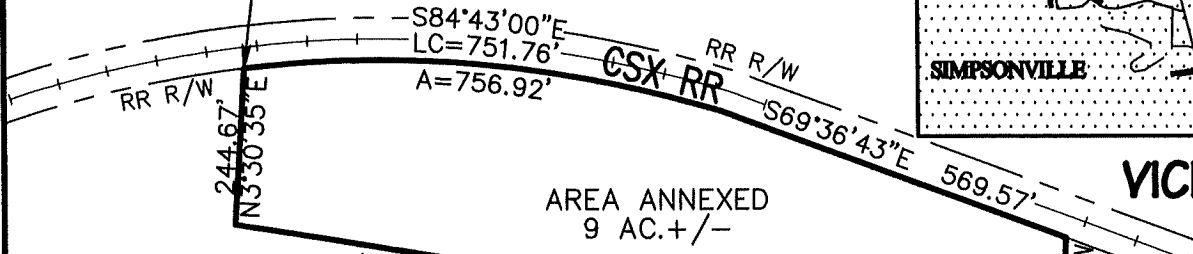

DEBBIE BATLINER, CITY CLERK

GRAPHIC SCALE 1"=300'

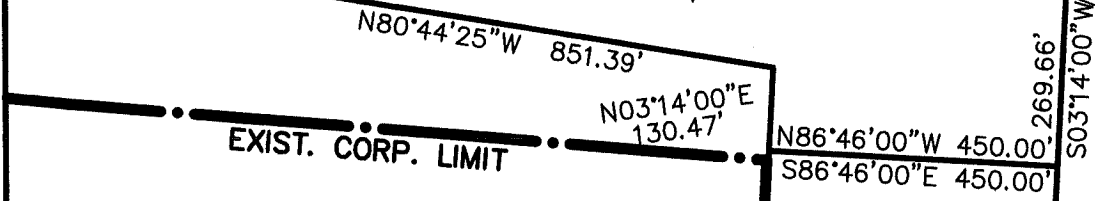


VICINITY MAP

POB - 9 Ac. Tract
APPROX.
LAT. = 38° 13' 35"
LONG. = -85° 20' 46"

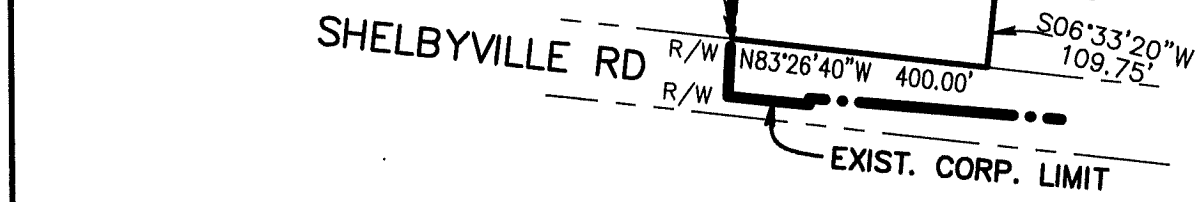


AREA ANNEXED
9 AC. +/-



AREA ANNEXED
12 AC. +/-

POB - 12 Ac. Tract
APPROX.
LAT. = 38° 13' 18"
LONG. = -85° 20' 36"



I hereby certify that the graphic depiction of the area shown hereon for the annexation of 21 acres +/- by the City of Simpsonville was prepared from existing instruments of record as indicated by the attached annexation ordinance adopted by the City of Simpsonville. This drawing does not represent a recent field survey meeting minimum current standards.

10/29/2008 Kerry P. Magan
Date Licensed Professional Surveyor

STATE OF KENTUCKY
KERRY P. MAGAN
1994
LICENSED PROFESSIONAL LAND SURVEYOR

GRAPHICAL DEPICTION
OF TERRITORY ANNEXED
MARCH 9, 2000 BY
ORDINANCE NO.: 2000-001