

KRS Map

TOWN OF SONORA, INC.
Sonora, Kentucky 42776

June 01, 1981

Secy. of State
Frankfort, Ky. 40601

SECRETARY OF STATE
RECEIVED

JUN 2 1981

COMMONWEALTH OF KENTUCKY

Enclosed find information needed for us
to comply with SB22:

- (1) Town of SONORA, Inc.
- (2) Incorporated MARCH 4, 1885. ✓
- (3) Class 6 City
- (4) MAP with ^{present} city Boundaries

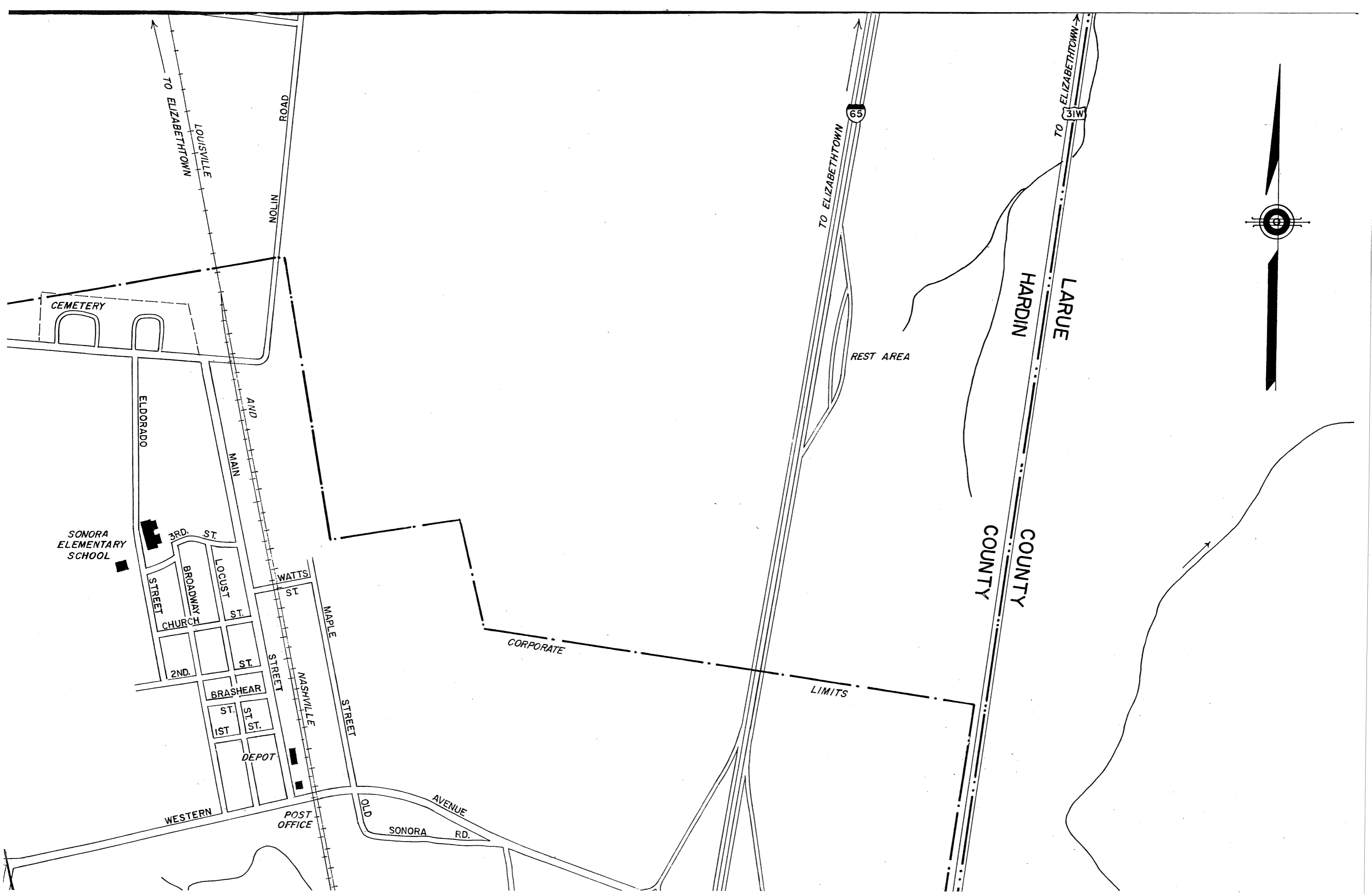
Hardin County

Dorothy P. Burman
Town Clerk

P.O. Box 193

Sonora, Ky. 42776





TO ELIZABETHTOWN

LOUISVILLE

ROAD

NOLIN

CEMETERY

ELDORADO

AND
MAIN

SONORA
ELEMENTARY
SCHOOL

3RD. ST.

CHURCH
STREET

BROADWAY

LOCUST
ST.

WATTS
ST.

2ND. ST.

BRASHEAR
ST.

ST.

1ST
ST.

DEPOT

WESTERN

POST
OFFICE

MAPLE
STREET

NASHVILLE

OLD

SONORA
RD.

AVENUE

CORPORATE

LIMITS

65

TO ELIZABETHTOWN

REST AREA

LARUE

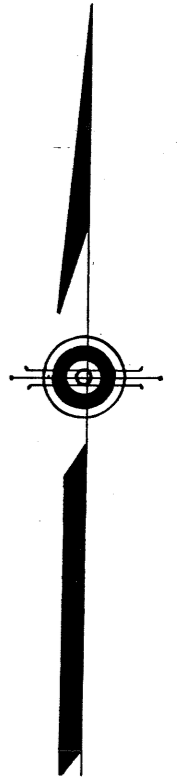
HARDIN

COUNTY

COUNTY

317

TO ELIZABETHTOWN

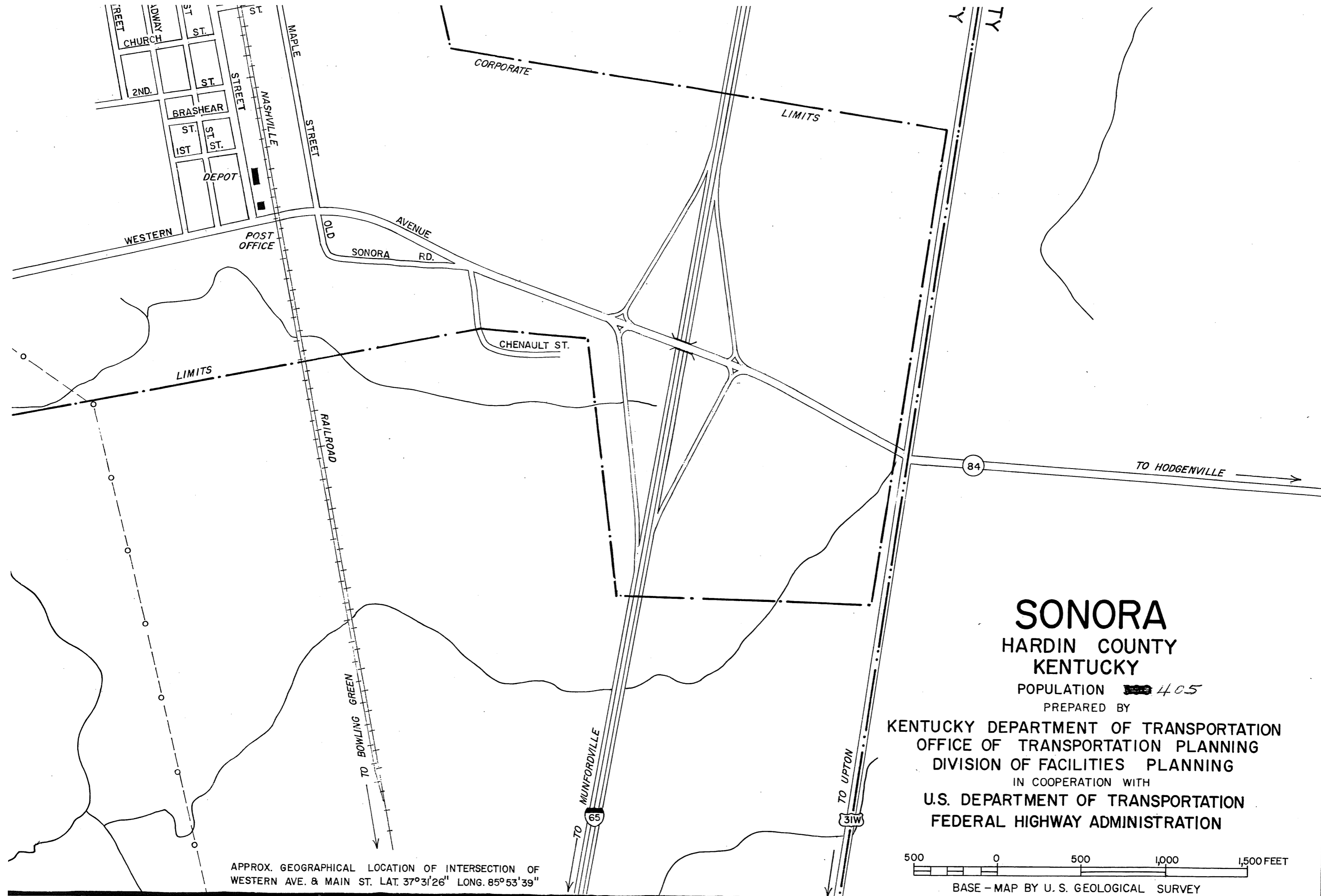




ORIGINAL DATA 1969			
REVISIONS			
DATE	BY	DATE	BY
2-12-74	R.D.W.		
1-21-76	R.D.W.		

DRAWING BY ROBERT B. TILLET

APPROX. GEOGRAPHICAL LOCATION OF INTERSECTION OF
WESTERN AVE. & MAIN ST. LAT. 37°31'26" LONG. 85°53'39"



SONORA

HARDIN COUNTY

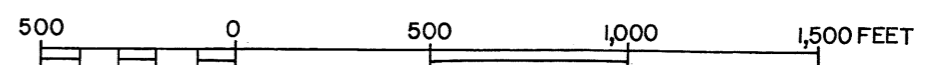
KENTUCKY

POPULATION ~~300~~ 405

PREPARED BY

KENTUCKY DEPARTMENT OF TRANSPORTATION
 OFFICE OF TRANSPORTATION PLANNING
 DIVISION OF FACILITIES PLANNING
 IN COOPERATION WITH

U.S. DEPARTMENT OF TRANSPORTATION
 FEDERAL HIGHWAY ADMINISTRATION



BASE - MAP BY U. S. GEOLOGICAL SURVEY

APPROX. GEOGRAPHICAL LOCATION OF INTERSECTION OF
 WESTERN AVE. & MAIN ST. LAT. 37°3'26" LONG. 85°53'39"