

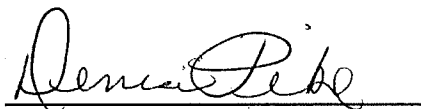
RECEIVED AND FILED  
DATE September 16, 2011

ELAINE N. WALKER  
SECRETARY OF STATE  
COMMONWEALTH OF KENTUCKY  
BY Harlie Adkins

**CERTIFICATION: KRS81A.470 FILINGS**

I certify I am duly qualified City Clerk of the City of Stanford Kentucky, and the foregoing 2 pages of Ordinance dated April 7, 2011 is a true, correct and complete copy duly adopted by the City Commission at a duly convened meeting held on April 7, 2011, all as appears in the official record of said City .

WITNESS, my hand and (Seal of Stanford Kentucky), this 7 day of April 2011.

  
City Clerk

**CITY OF STANFORD, KENTUCKY**  
**ORDINANCE TO ADOPT OFFICIAL MAP OF**  
**ANNEXATION OF NOVEMBER 1977**

WHEREAS the City of Stanford, Kentucky is a Fourth Class City incorporated April 4, 1861, and

WHEREAS the City Council of Stanford on November 3, 1977 passed an ordinance to annex, "A certain tract of land lying to the north of the present city limits, to the east of U.S. Highway 150 and the west of state road No. 590 (Hubble Road), then south of Joe T. Embry and Glen Alford property ..," being Ordinance Number 110.2, and

WHEREAS in 1977 the City of Stanford, Kentucky was a fifth class city, and

WHEREAS the controlling Kentucky Revised Statues, at the time, were KRS 81.230 "Annexation or reduction of territory by fifth-class city," KRS 81.100 and KRS 81.110, and

WHEREAS KRS 81A.470 did not become law until July 15, 1980, and

WHEREAS a map was never prepared of the annexed area, and

WHEREAS a dispute arose as to the City of Stanford, Kentucky boundaries in this area, and

WHEREAS the City of Stanford, Kentucky now would like to file an official map of this area, and

WHEREAS the map indicates there are five properties that are in the City Limits of Stanford, Kentucky that are not currently being taxed by the City of Stanford, Kentucky: therefore

**BE IT ORDAINED BY THE CITY OF STANFORD, KENTUCKY:**

That the real property denoted in Ordinance Number 110.2 a copy of which is attached hereto as Exhibit 1, said ordinance passed by the Stanford City Council on November 3, 1977, is hereby and shall be officially represented by the Map attached hereto as Exhibit 2.

The Map attached hereto as Exhibit 2 was prepared by AGE Engineering Services, Inc., dated February 8, 2011, consisting of an area of 412.502 acres. This map shall be filed with the Lincoln County Clerk's Office, the Kentucky Secretary of State the Department for Local Government, the Kentucky Revenue Cabinet and each franchise taxpayer within the City of Stanford, Kentucky.

The City of Stanford, Kentucky has a Planning and Zoning Board. The Stanford Planning and Zoning Board has adopted classifications for the area described in Ordinance Number 110.2, and these classifications are shown on the Map of the area attached hereto as Exhibit 2.

That the five real property owners currently not being taxed by the City of Stanford, Kentucky will be sent a notice no later than 14 days prior to the meeting at which this ordinance receives its second reading. The notice must include the time, date, and location of the meeting at which this ordinance receives its second reading and a copy of this ordinance and all exhibits attached.

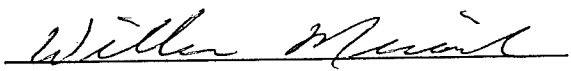
This ordinance and corresponding maps are on file at the City Clerk's Office 305 East Main Street, Stanford, Kentucky 40484.


This ordinance shall take effect after its passage and upon publication.

First reading of this ordinance March 3, 2011.

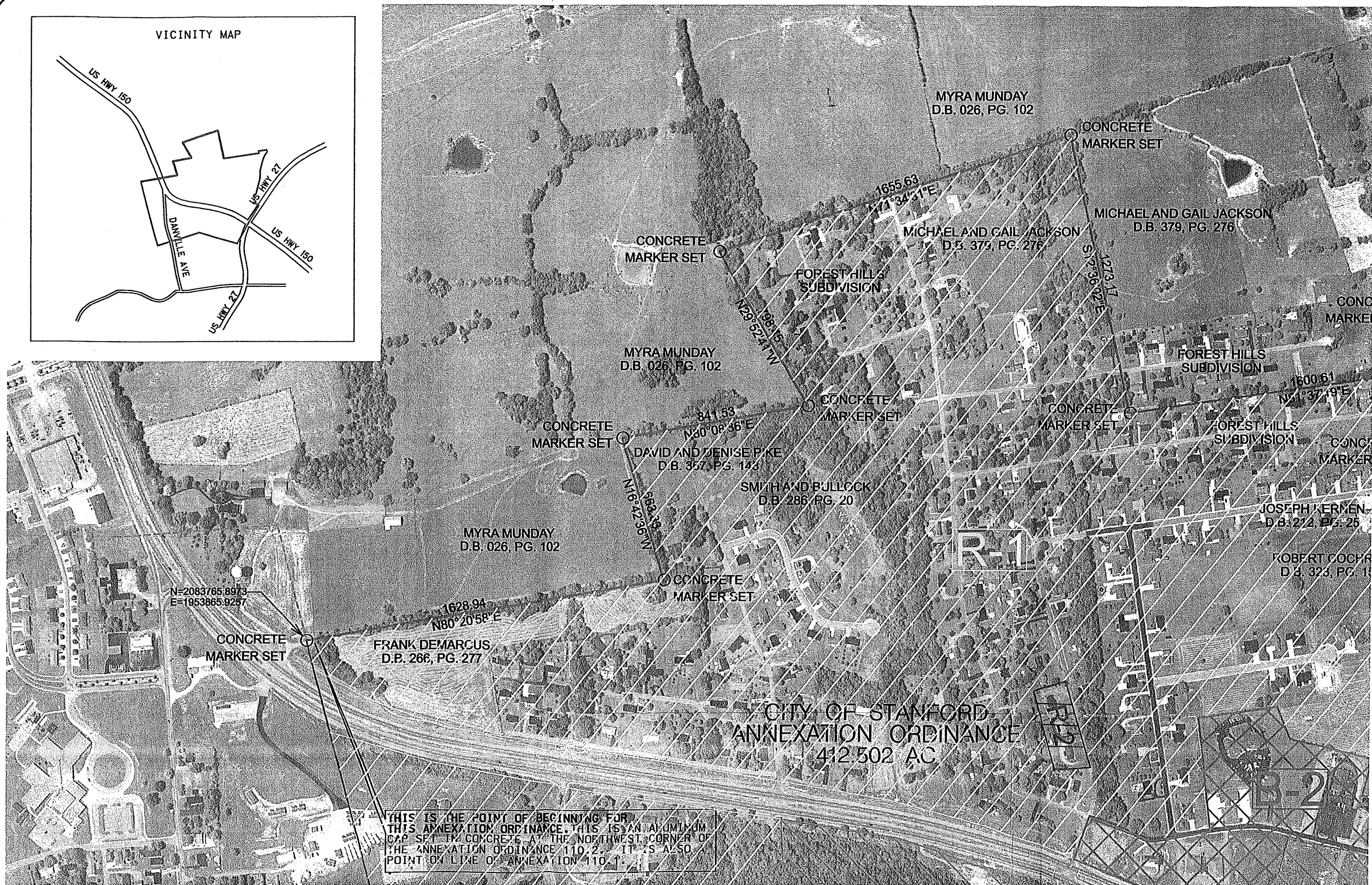
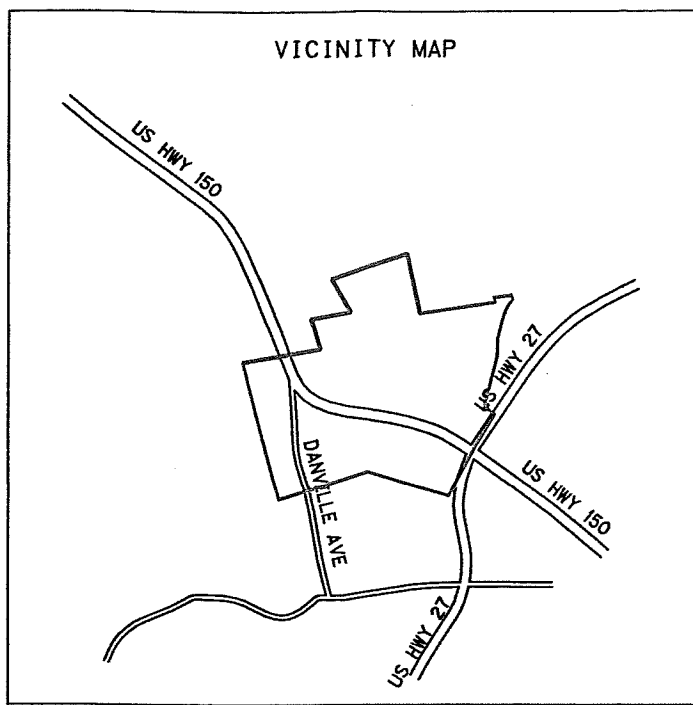
Second reading will be April 7, 2011.

Passed and adopted this 7th day of April, 2011.

  
Mayor William Miracle

Attest   
City Clerk

VICINITY MAP



THIS IS THE POINT OF BEGINNING FOR THIS ANNEXATION ORDINANCE. THIS IS AN ALUMINUM CAP SET IN CONCRETE AT THE NORTHWEST CORNER OF THE ANNEXATION ORDINANCE 110.2. IT IS ALSO POINT OF LINE OF ANNEXATION 110.1.



CONCRETE  
MARKER SET

N=2083765.8973  
E=1953865.9257

CONCRETE  
MARKER SET

1628.94  
N80°20'58"E  
FRANK DEMARCUS  
D.P. 266, PG. 277

CITY OF STANFORD  
ANNEXATION ORDINANCE  
412.502 AC

THIS IS THE POINT OF BEGINNING FOR  
THIS ANNEXATION ORDINANCE. THIS IS AN ALUMINUM  
CAP SET IN CONCRETE AT THE NORTHWEST CORNER OF  
THE ANNEXATION ORDINANCE 110.2. IT IS ALSO  
POINT ON LINE OF ANNEXATION 110.1.

AREA ANNEXED BY  
ANNEXATION 110.1

N44°27'26"W  
2069.52

R-1

AREA ANNEXED BY  
ANNEXATION 110.1

1947.00  
S72°52'39"W

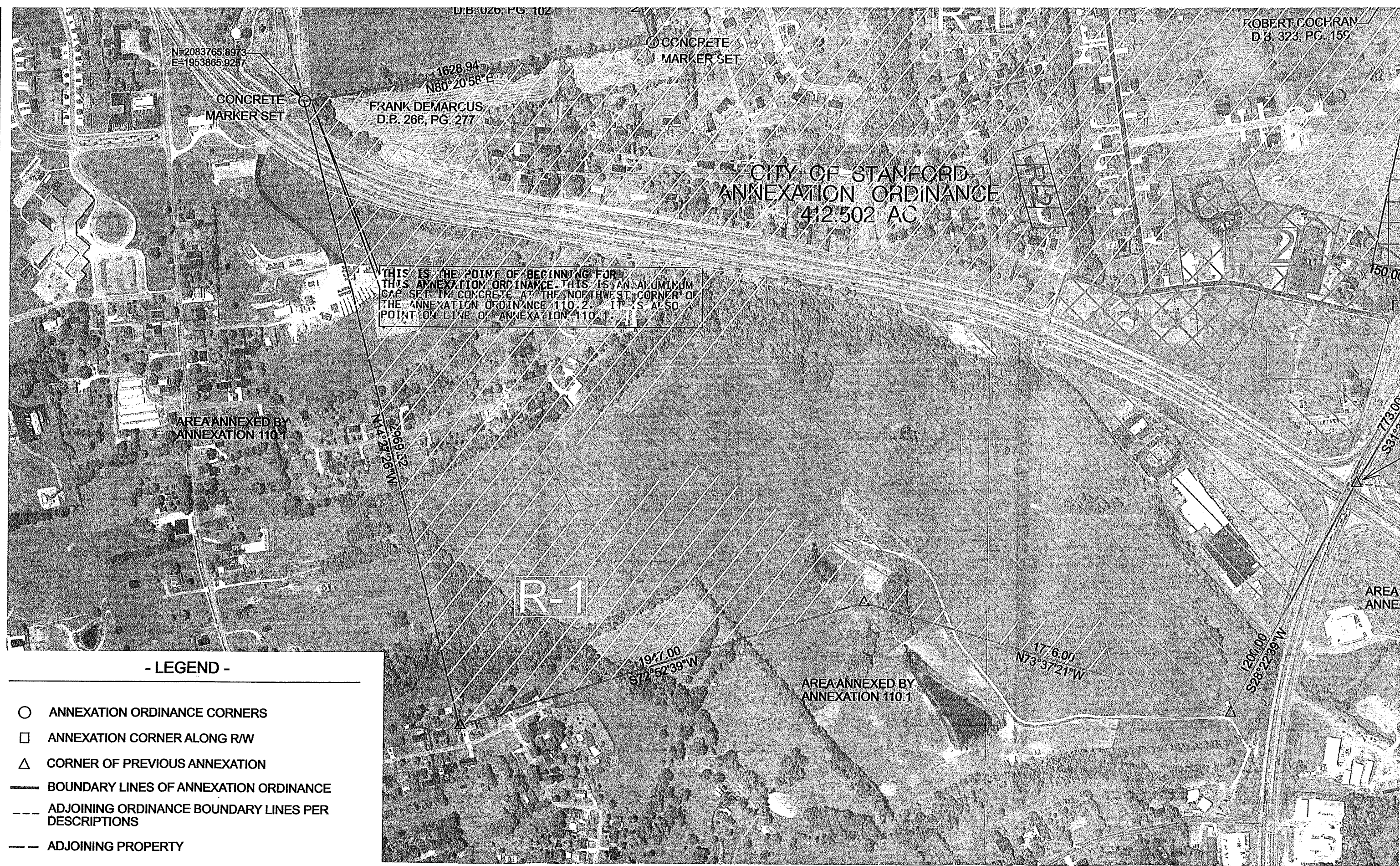
1776.05  
N73°37'21"W

1200.00  
S28°22'39"W

AREA ANNE

- LEGEND -

- ANNEXATION ORDINANCE CORNERS
- ANNEXATION CORNER ALONG R/W
- △ CORNER OF PREVIOUS ANNEXATION
- BOUNDARY LINES OF ANNEXATION ORDINANCE
- ADJOINING ORDINANCE BOUNDARY LINES PER DESCRIPTIONS
- - - ADJOINING PROPERTY



ROBERT COCHRAN  
D.B. 323, PG. 159

CITY OF STANFORD  
ANNEXATION ORDINANCE  
412.502 AC

CONCRETE  
MARKER SET

ALUMINUM  
CORNER OF  
S ALSO

R-3

150.00  
S14°47'39"W  
473.00  
604.00  
S13°47'39"W  
375.00  
S02°47'39"W  
WITH CENTER OF KY HWY 590

POINT IN ORIGINAL  
CENTER OF US 27

POINT IN ORIGINAL  
CENTER OF US 27

ANNEXATION PLAT  
NOT FOR LAND TRANSFER

ALL BEARINGS ARE BASED ON GRID NORTH  
OF THE KENTUCKY STATE PLANE COORDINATE  
SYSTEM SOUTH ZONE.

ALL COORDINATES DISPLAYED ON THIS PLAT  
ARE FROM THE KENTUCKY STATE PLANE  
COORDINATE SYSTEM SOUTH ZONE.

AREA ANNEXED BY  
ANNEXATION 110.1

AREA ANNEXED BY  
ANNEXATION 110.1

1947.00  
S72°52'39"W

1776.00  
N73°37'21"W

1200.00  
S28°22'39"W

NUMBER	DIRECTION	DISTANCE
L1	S 17°38'59" E	94.00 FT
L2	S 35°17'39" W	161.00 FT
L3	S 28°17'39" W	80.00 FT
L4	S 20°17'39" W	128.00 FT
L5	S 11°47'39" W	162.00 FT
L6	S 54°42'21" E	274.00 FT
L7	N 07°55'18" W	100.11 FT

ZONING MAP

CITY OF STANFORD

ONE TRACT TOTALING 412.502 ACRES BY SURVEY  
STANFORD, LINCOLN COUNTY, KENTUCKY

DRAWN  
JPA

SCALE  
1" = 400'

DATE  
2/7/11

FILENAME  
10211LIMITS12-9.DGN

CHECKED  
GOOCH

STATE OF KENTUCKY  
D.B. GOOCH  
2/8/11  
EXERCISED  
PROFESSIONAL  
LAND SURVEYOR