

DATE September 16, 2011

ELAINE N. WALKER  
SECRETARY OF STATE  
COMMONWEALTH OF KENTUCKY  
BY Hankie Adkins

CITY OF STANFORD, KENTUCKY

RESOLUTION REGARDING ORDINANCE TO ADOPT

OFFICIAL MAP OF ANNEXATION OF NOVEMBER 1977

WHEREAS the City of Stanford, Kentucky is a Fourth Class City incorporated April 4, 1861, and

WHEREAS the City Council of Stanford passed, "An Ordinance to Adopt Official Map of Annexation of November 1977" on April 7, 2011, and

WHEREAS the Ordinance states, "WHEREAS KRS 81A.470 did not become law until July 15, 1980, and, WHEREAS a map was never prepared of the annexed area, and..."

That KRS 81A.470 requires that a map of an annexed area be prepared by a professional land surveyor. A professional land surveyor had not previously prepared a map of the Annexation of November 1977, because it was not the law at the time.

However, the Annexation of November 1977 is a part of the map filed by the City of Stanford on November 10, 1980 and again on April 13, 1981. Said map attached hereto as Exhibit 1.

The Official Map of the Annexation of November 1977, attached hereto as Exhibit 2, was prepared by AGE Engineering Services, Inc., dated February 8, 2011, consisting of an area of 412.502 acres. The Official Map of the Annexation of November 1977 has the same northern boundary as the center northern boundary of the map filed on November 10, 1980 and again on April 13, 1981.

The Stanford City Council, at the time, legally approved the Annexation of November 1977, and there was no Circuit Court challenge to the annexation.

THEREFORE, THE CITY COUNCIL OF STANFORD, KENTUCKY APPROVES THE FOLLOWING RESOLUTION:

That the Official Map of the Annexation of November 1977, attached hereto as Exhibit 2, which was prepared by AGE Engineering Services, Inc., dated February 8, 2011, consisting of an area of 412.502<sup>acs</sup> be accepted by the Office of the Kentucky Secretary of State as a correction to the map of the City of Stanford, Kentucky filed pursuant to KRS 81.045 on November 10, 1980 and April 13, 1981.

This resolution and corresponding maps are on file at the City Clerk's Office 305 East Main Street, Stanford, Kentucky 40484.

Motion to Approve Resolution made by: Council Member Mike Satterland

Motion Seconded by: Council Member Eddie Carter

Number in Favor: 5

Number Against: 0

Done this date: 7/28/11

William Miracle  
Mayor William Miracle

Attest Doreen Pike  
City Clerk

City of Stanford, Kentucky  
Stanford, Kentucky 40484

SECRETARY OF STATE  
**RECEIVED**  
NOV 10 1980

Commonwealth of Kentucky

November 6, 1980

It has been brought to my attention that all cities should file with the Secretary of State a document listing the name of the City, year of its incorporation, the present classification and present boundaries.

Enclosed is a map with information required.

Sincerely,

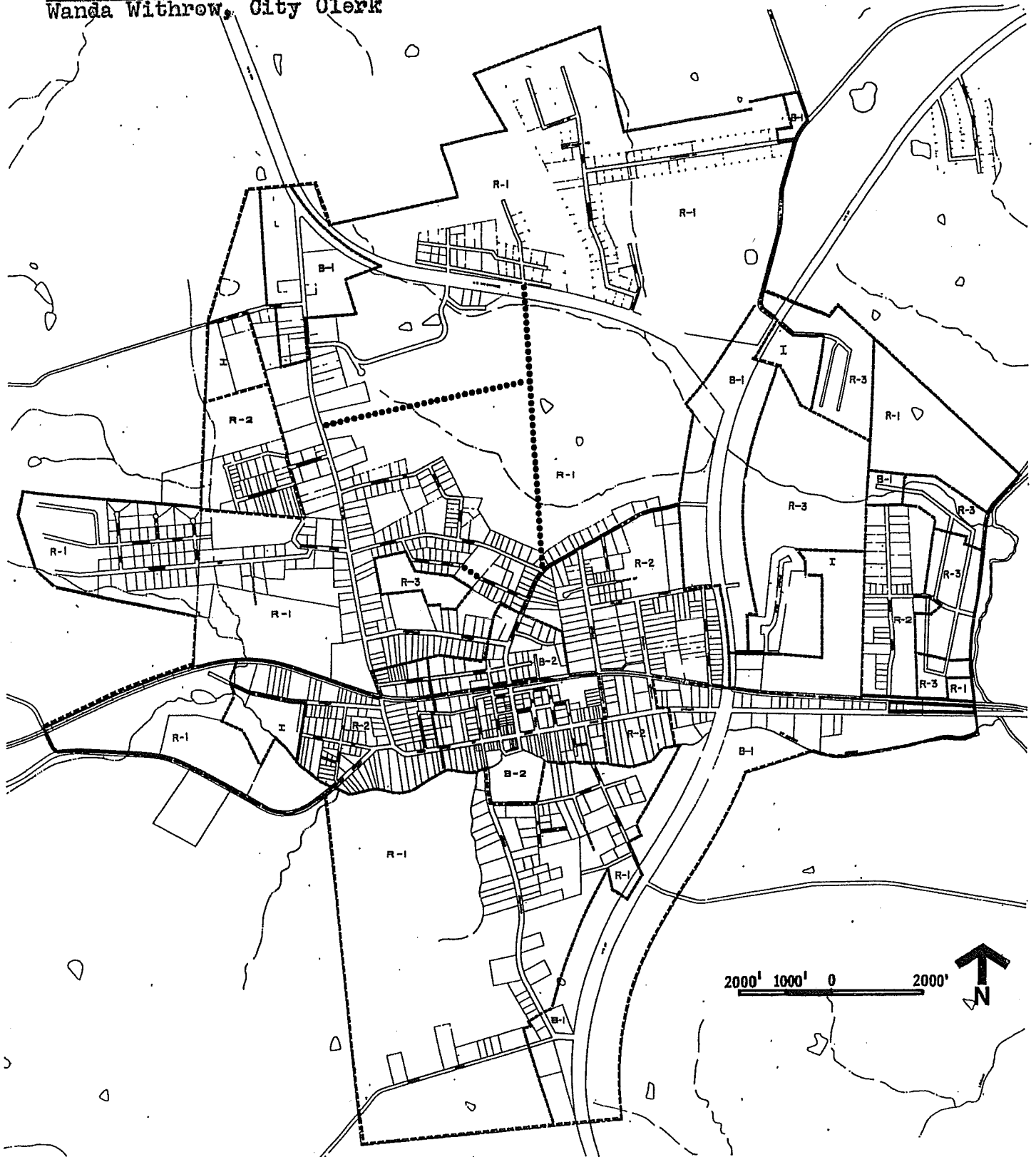


Wanda Withrow, City Clerk

Exhibit 1

The City of Stanford was incorporated April 4, 1861 (5th Class)

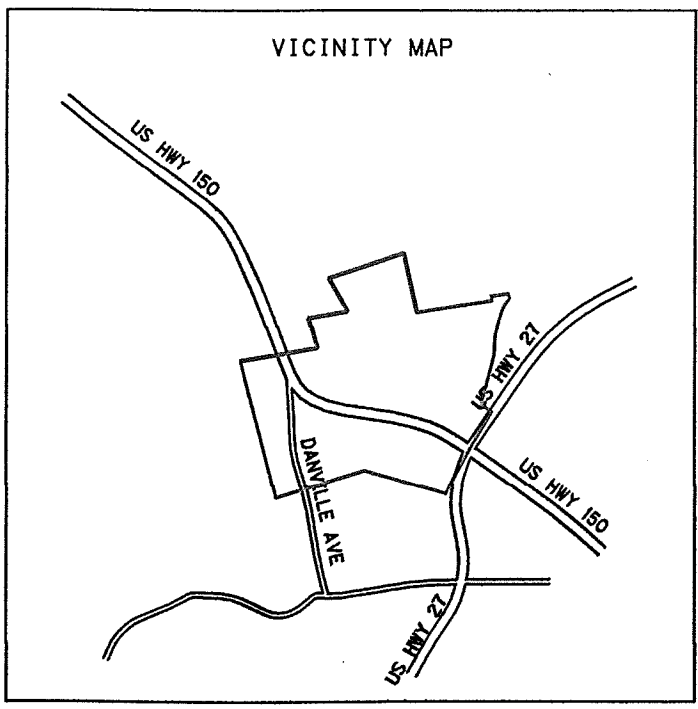
*Wanda Withrow*  
Wanda Withrow, City Clerk



**Stanford  
Kentucky**

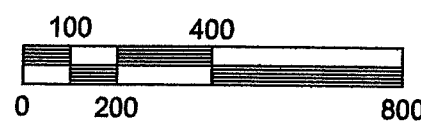
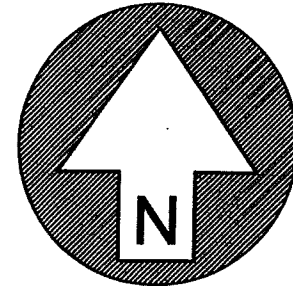
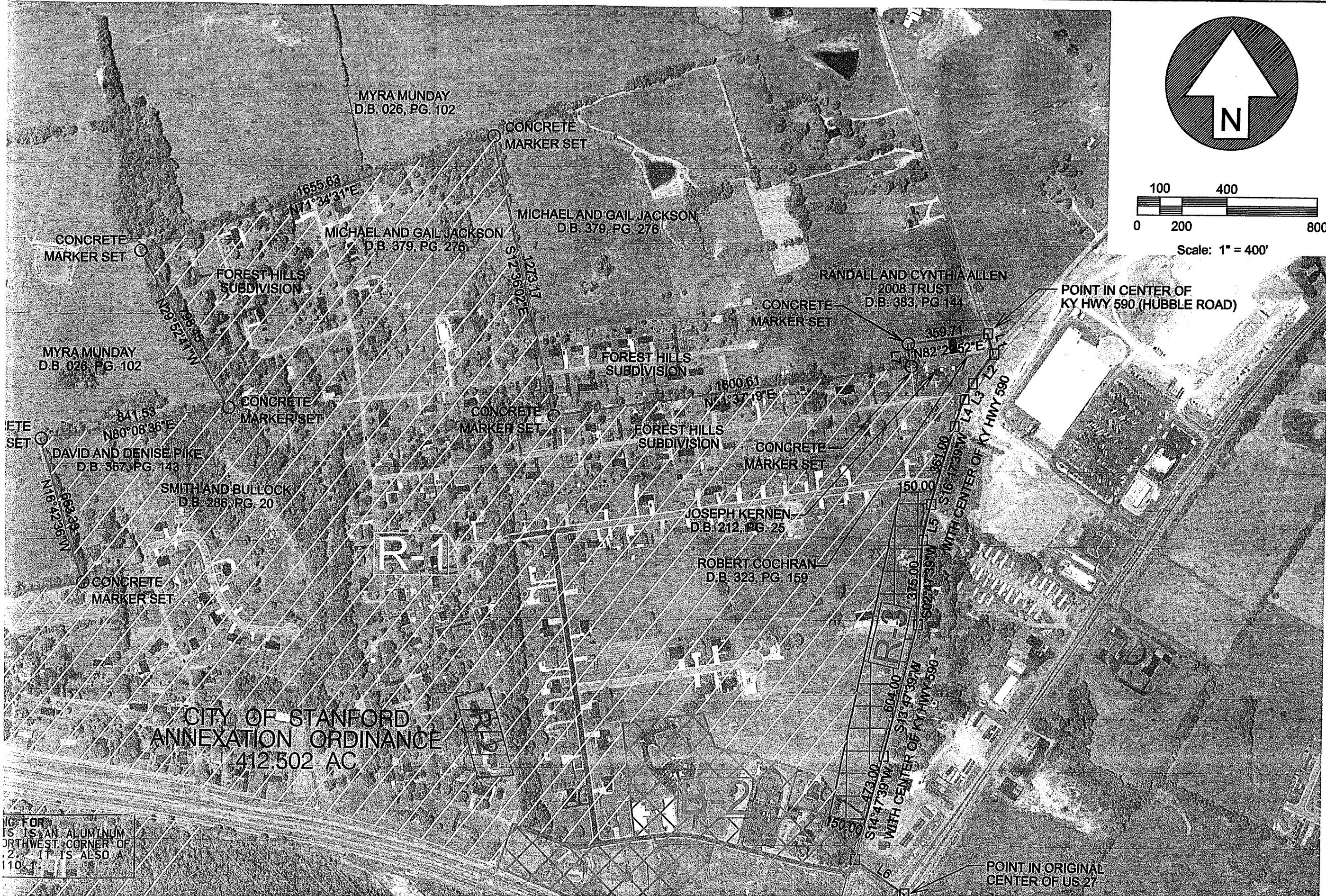
**Zoning  
Districts**

R-1 SINGLE FAMILY RESIDENTIAL  
R-2 SINGLE AND TWO FAMILY RESIDENTIAL  
R-3 MULTI FAMILY RESIDENTIAL  
B-1 NEIGHBORHOOD COMMERCIAL  
B-2 CENTRAL COMMERCIAL  
I INDUSTRIAL  
... PROPOSED STREETS



CITY OF STANFORD  
ANNEXATION ORDINANCE  
412.502 AC

THIS IS THE POINT OF BEGINNING FOR THIS ANNEXATION ORDINANCE. THIS IS AN ALUMINUM CAP SET IN CONCRETE AT THE NORTHWEST CORNER OF THE ANNEXATION ORDINANCE 110.2. IT IS ALSO A POINT ON LINE OF ANNEXATION 110.1.



Scale: 1" = 400'

CITY OF STANFORD  
ANNEXATION ORDINANCE  
412.502 AC

THIS MAP IS AN ALUMINUM  
PRINTING. THE NORTHWEST CORNER OF  
THE PLAT IS ALSO A  
110.1

ENGINEERING SERVICES, INC.

# ACE

P.O. BOX 204  
165 FOSTER LANE  
STANFORD, KY 40484  
(606) 365-8362 FAX (606) 365-1097

ZONING MAP

CITY OF STANFORD

ONE TRACT TOTALING 412.502 ACRES BY SURVEY  
STANFORD, LINCOLN COUNTY, KENTUCKY

N=2083765.8973  
E=1953886.9257

CONCRETE  
MARKER SET

FRANK DEMARCUS  
D.B. 266, PG. 277

CONCRETE  
MARKER SET

CITY OF STANFORD  
ANNEXATION ORDINANCE  
412.502 AC

THIS IS THE POINT OF BEGINNING FOR  
THIS ANNEXATION ORDINANCE. THIS IS AN ALUMINUM  
CAP SET IN CONCRETE AT THE NORTHWEST CORNER OF  
THE ANNEXATION ORDINANCE 110.2. IT IS ALSO A  
POINT ON LINE OF ANNEXATION 110.1.

AREA ANNEXED BY  
ANNEXATION 110.1

2969.52  
N44°21'26"W

R-1

1947.00  
S72°52'39"W

AREA ANNEXED BY  
ANNEXATION 110.1

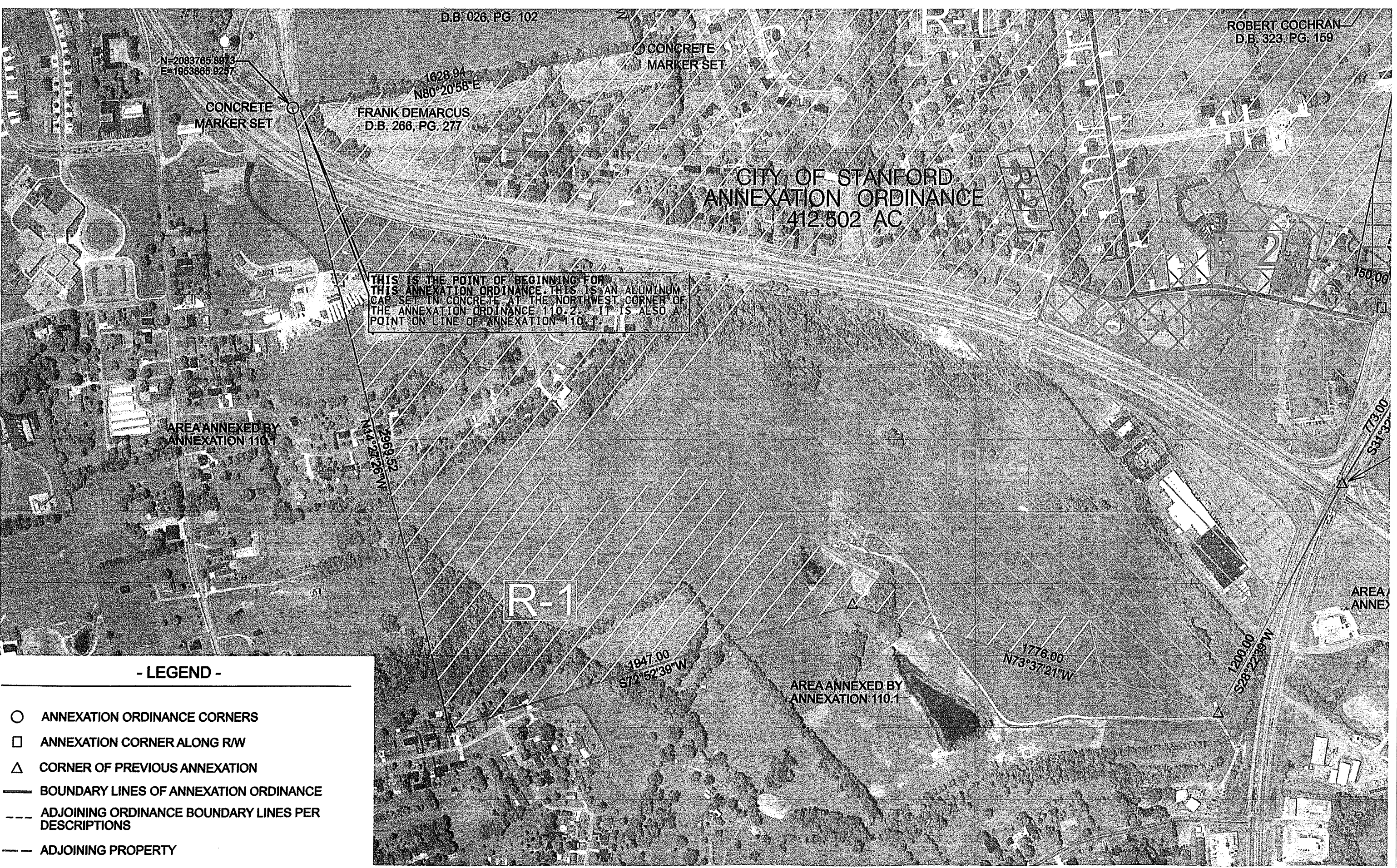
1776.00  
N73°37'21"W

1200.00  
S28°22'39"W

AREA ANNEXED

- LEGEND -

- ANNEXATION ORDINANCE CORNERS
- ANNEXATION CORNER ALONG R/W
- △ CORNER OF PREVIOUS ANNEXATION
- BOUNDARY LINES OF ANNEXATION ORDINANCE
- ADJOINING ORDINANCE BOUNDARY LINES PER DESCRIPTIONS
- - - ADJOINING PROPERTY



CONCRETE  
MARKER SET

ROBERT COCHRAN  
D.B. 323, PG. 159

# CITY OF STANFORD ANNEXATION ORDINANCE 412.502 AC

ALUMINUM  
CORNER OF  
S ALSO A

150.00  
S14°47'39"W  
473.00  
604.00  
S13°47'39"W  
WITH CENTER OF KY HWY 590  
375.00  
S02°47'39"

POINT IN ORIGINAL  
CENTER OF US 27

POINT IN ORIGINAL  
CENTER OF US 27

ANNEXATION PLAT  
NOT FOR LAND TRANSFER

ALL BEARINGS ARE BASED ON GRID NORTH  
OF THE KENTUCKY STATE PLANE COORDINATE  
SYSTEM SOUTH ZONE.

ALL COORDINATES DISPLAYED ON THIS PLAT  
ARE FROM THE KENTUCKY STATE PLANE  
COORDINATE SYSTEM SOUTH ZONE.

AREA ANNEXED BY  
ANNEXATION 110.1

AREA ANNEXED BY  
ANNEXATION 110.1

1947.00  
S72°52'39"W

1776.00  
N73°37'21"W

1200.00  
S28°22'39"W

NUMBER	DIRECTION	DISTANCE
L1	S 17°38'59" E	94.00 FT
L2	S 35°17'39" W	161.00 FT
L3	S 28°17'39" W	80.00 FT
L4	S 20°17'39" W	128.00 FT
L5	S 11°47'39" W	162.00 FT
L6	S 54°42'21" E	274.00 FT
L7	N 07°55'18" W	100.11 FT

ZONING MAP

## CITY OF STANFORD

ONE TRACT TOTALING 412.502 ACRES BY SURVEY  
STANFORD, LINCOLN COUNTY, KENTUCKY

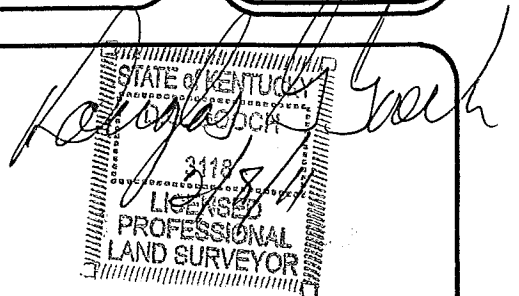
DATE  
2/7/11

SCALE  
1" = 400'

DRAWN  
JPA

CHECKED  
GOOCH

FILENAME  
10211LIMITS12.9.DGN

STATE OF KENTUCKY  
  
 3118  
 LICENSED  
 PROFESSIONAL  
 LAND SURVEYOR