

RECEIVED AND FILED
DATE February 8, 2018

Ordinance 80-8
Eastman/Westman

ALISON LUNDERGAN GRIMES
SECRETARY OF STATE
COMMONWEALTH OF KENTUCKY
BY Kandice Adams

RESOLUTION NO. 12-011
CITY OF STANTON, KENTUCKY

**A RESOLUTION ADOPTING A MODERN AND ACCURATE
LEGAL DESCRIPTION OF TERRITORY PREVIOUSLY
ANNEXED BY ORDINANCE**

WHEREAS, the City of Stanton, Kentucky has enacted numerous ordinances annexing property into the corporate limits of the City of Stanton; and

WHEREAS, each individual annexation contains a prior survey often prepared by now unknown individual, and further references documentation that is no longer in existence; and

WHEREAS, the City of Stanton wishes to provide a modern, accurate, easily identifiable legal description reflecting bearings and coordinates based upon the state plane coordinate systems, including relevant GPS and GIS data, same having been certified by a professional land surveyor for each prior annexation; and

WHEREAS, the City of Stanton wishes to comply with the requirements of Amended KRS 81A.470 effective July 13, 2004; and

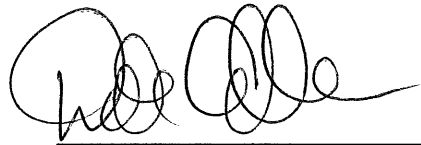
WHEREAS, the City of Stanton does not intend to amend or replace its prior ordinance annexing, but rather to interpret the defined boundaries of the territory previously annexed and adopt a modern and accurate legal description of territory previously annexed,

**NOW THEREFORE, BE IT RESOLVED BY THE CITY COUNCIL OF THE CITY
OF STANTON, KENTUCKY:**

SECTION 1. That the City Council of the City of Stanton, Kentucky hereby adopts the following legal description, and the plat attached hereto as prepared by

Rodney A. Hall, a Professional Land Surveyor No. 2841 by new survey as an accurate depiction of the property previously annexed into the corporate city limits of the City of Stanton by Ordinance 80-8 dated December 8, 1980, (a copy of which is attached hereto as "Exhibit A") and hereby adopts said new legal description, (attached hereto as "Exhibit B" and incorporated by reference into this Resolution), and the accompanying plat as the official legal description and plat to be adopted by the City for all purposes when referencing this prior annexation. See also Plat of record at Plat Cabinet 3, Slide _____, records of the Powell County Clerk's Office.

Motion made by Pam Tipton; seconded by Dixie Lockard.
The vote was 6 in favor, and 0 opposed, at the regular meeting of the City Council for the City of Stanton, held on the 12th day of July, 2012.



DALE ALLEN, Mayor
City of Stanton

ATTEST:

Stephanie Phillippe
Stephanie Phillippe, City Clerk
City of Stanton

City Clerk's Certification

I, Stephanie A. Faulkner, City Clerk of the City of Stanton do hereby certify that, the forgoing Resolution No. 12-011 is a true, correct and complete copy duly adopted by the City Commission at a duly convened meeting held on 07/12/2012, all as appears in the official records of said City.

Given under my hand this 1st day of February, 2018.



City Clerk

(SEAL)



Exhibit B

Deed Description

Ordinance No. 80-8

City of Stanton, KY

A certain Parcel of land lying near the Airport in Stanton and adjoining the City of Stanton, KY and known as the Airport Subdivision per Plat of Record filed in Plat Cabinet 1-49, being more particularly described as follows:

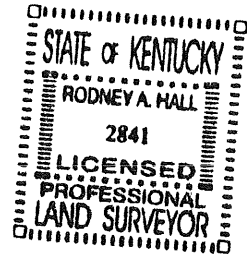
The POINT OF BEGINNING (P.O.B.) at Kentucky State Plane (NAD 83) Single Zone Coordinate of Northing=3838159.29 and Easting=5469344.63, said point being Southwest of Lisa Lane and on the Property Line of Talmadge Smallwood in Stanton, KY; thence along the line of Smallwood N 37°01'25" W, a distance of 467.64'(deed 490') to a corner of Smallwood, the Airport Subdivision and Babe Howard; thence along the line of Howard N 25°44'21" E, a distance of 35.39' to the City of Stanton Corporate Boundary line; thence leaving the City of Stanton Corporate Boundary line and continuing with the line of Howard N 25°44'21" E, a distance of 72.18' to a point; thence N 25°14'21" E, a distance of 608.72' to a point; thence N 31°35'56" E, a distance of 81.70' to a point; thence N 29°05'56" E, a distance of 158.60' to a marker at the corner of Babe Howard, the Airport Subdivision and H. T. Derickson; thence leaving Babe Howard and along the line of Derickson S 47°24'04" E, a distance of 209.00' to a point; thence S 63°54'04" E, a distance of 142.25' to a point; thence S 73°44'12" E, a distance of 126.00' to a marker at the corner of H. T. Derickson, the Airport Subdivision and the Ron Hub Subdivision(PC1-84); thence with the Ron Hub Subdivision S 27°39'56" W, a distance of 352.00' to a corner; thence leaving the Airport Subdivision and Cutting across the Ron Hub Subdivision S 54°59'05" E, a distance of 104.57' to a Point; thence S 37°13'10" W, a distance of 527.78' to a point in the existing City of Stanton Corporate Boundary Line(KRS 81.045 Filing); thence leaving the City of Stanton Corporate Boundary line S 37°13'10" W, a distance of 248.22' to the POINT OF BEGINNING(P.O.B.); said described tract containing 11.58 Acres, more or less.

Statement of Resources

The Property described above was computed using survey information from a Map of Stanton prepared and certified by Blake Adams, PLS on 11/13/2005. Record PLATS from the Powell County Clerk's Office and the description contained in Ordinance No. 80-8 were also utilized.

Ordinance No. 80-8

Coordinates and Bearings are Kentucky State Plane (NAD 83) Single Zone. The P.O.B. Coordinate was derived from tying to the KRS 81.025 information available from the Kentucky Secretary of State's Mapping of the City of Stanton, KY Corporate Boundary Line and available on the Internet at KYGEONET and/or the Kentucky Secretary of State's Website.



Rodney A. Hall
Signature

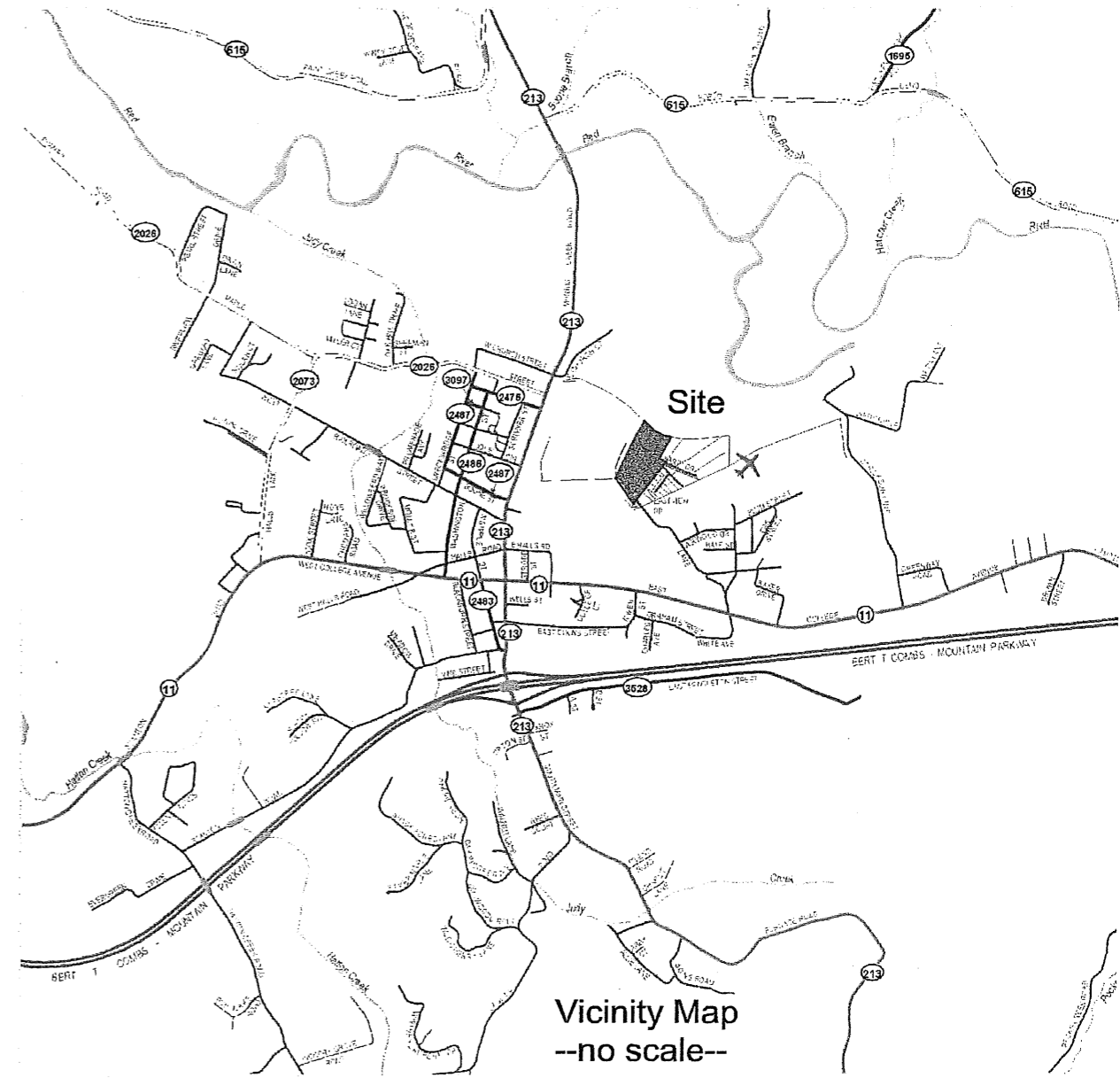
2841
PLS Number

10/15/2012
Date

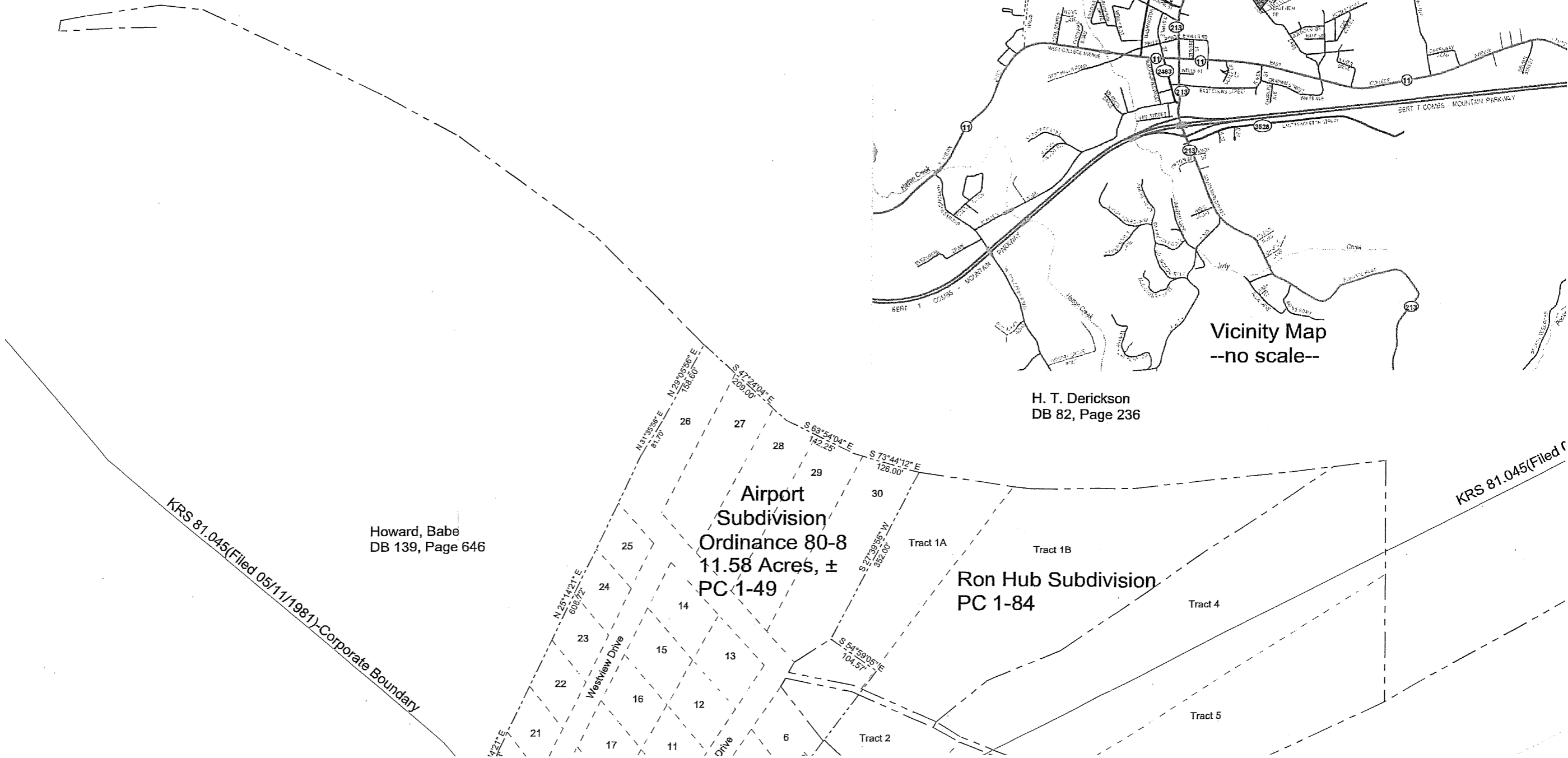
Statement of Resources

The Property described on this Plat was computed using survey information from a Map of Stanton prepared and certified by Blake Adams, PLS on 11/13/2005. Record PLATS from the Powell County Clerk's Office and the description contained in Ordinance No. 80-8 were also utilized.

Coordinates and Bearings are Kentucky State Plane (NAD 83) Single Zone. The P.O.B. Coordinate was derived from tying to the information available from the Kentucky Secretary of State's Mapping of City Corporate Boundaries in the state of Kentucky and available on the Internet at KYGEONET and/or the Kentucky Secretary of State's Website.



H. T. Derickson
DB 82, Page 236



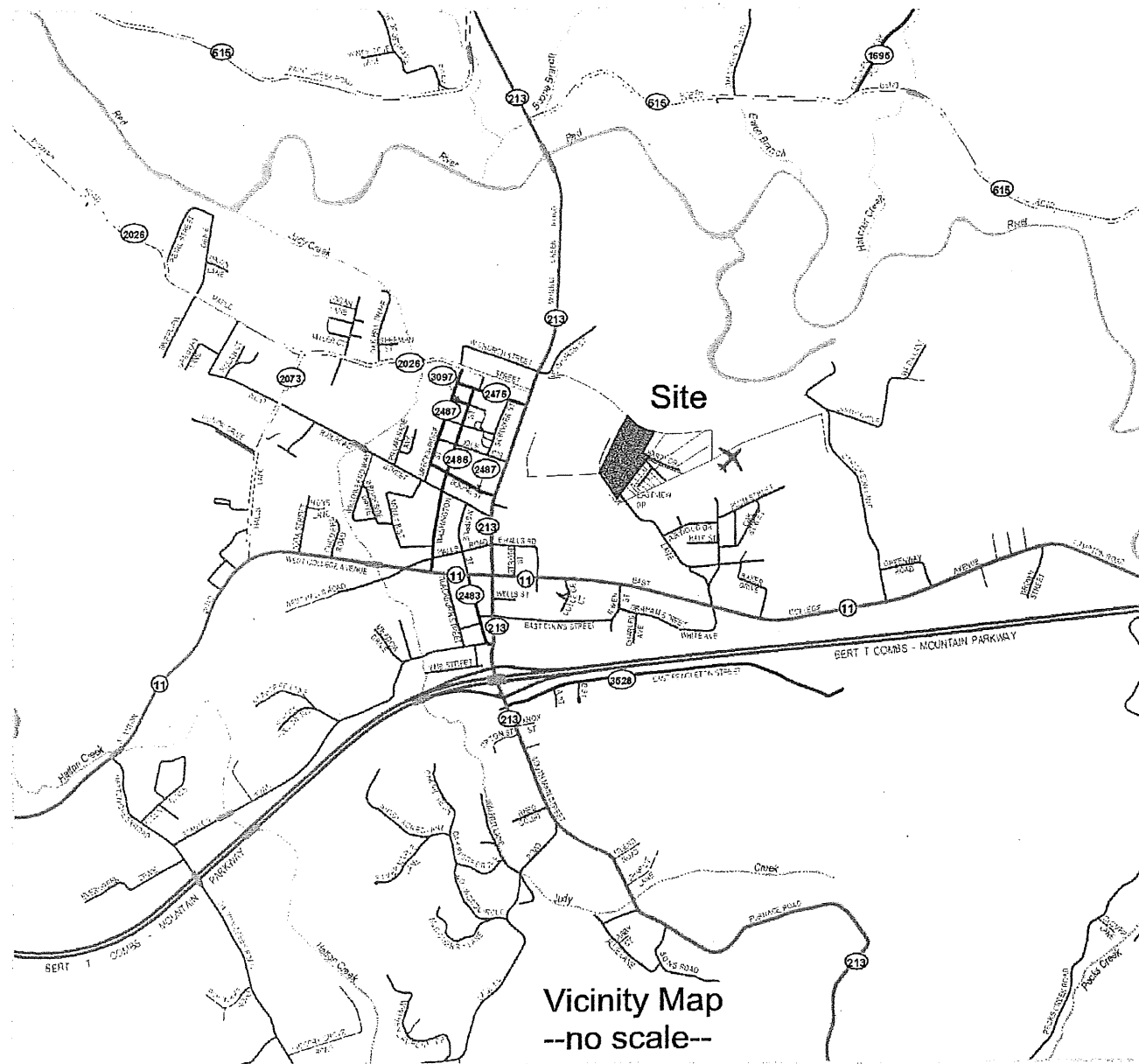
KRS 81.045(Filed 05/11/1981)-Corporate Boundary

Howard, Babe
DB 139, Page 646

**Airport
Subdivision
Ordinance 80-8
11.58 Acres, ±
PC 1-49**

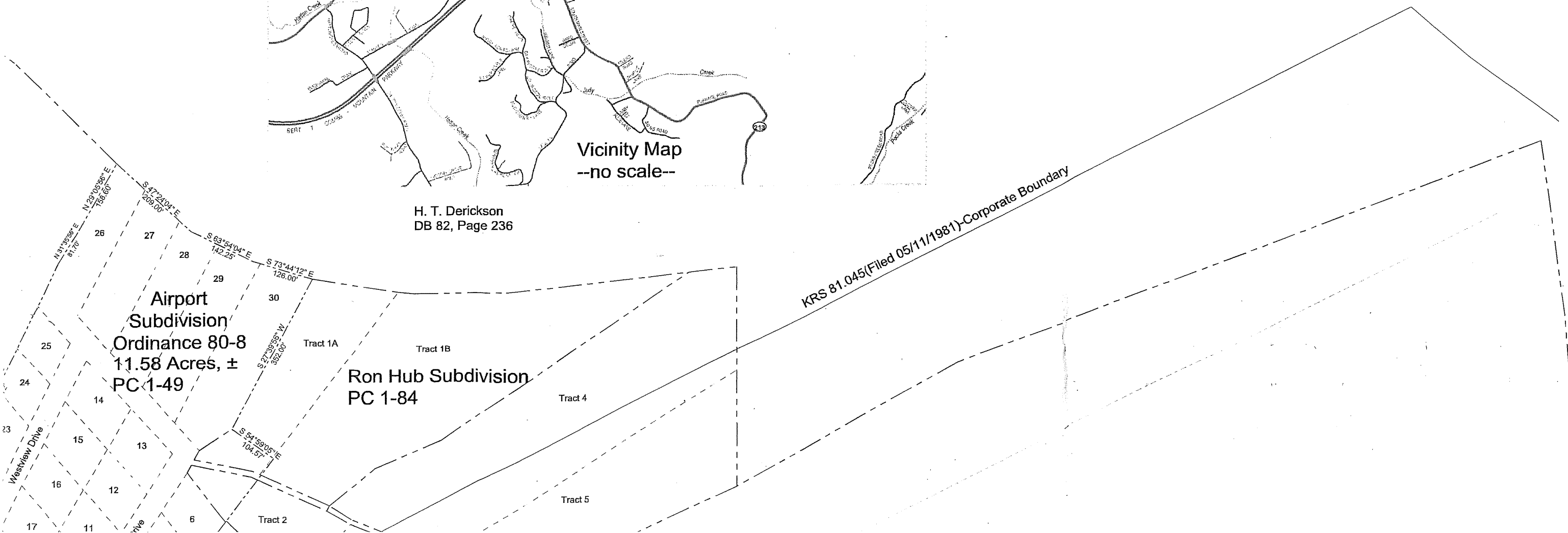
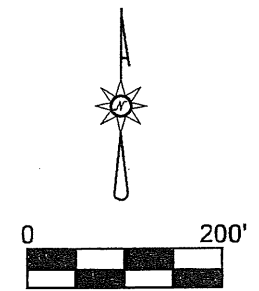
**Ron Hub Subdivision
PC 1-84**

KRS 81.045(Filed r



Vicinity Map
--no scale--

H. T. Derickson
DB 82, Page 236



**Airport
Subdivision
Ordinance 80-8
11.58 Acres, ±
PC 1-49**

**Ron Hub Subdivision
PC 1-84**

KRS 81.045 (Filed 05/11/1981)-Corporate Boundary

H.T.D.

--no scale--

H. T. Derickson
DB 82, Page 236

KRS 81.045 (Filed 05/11/1981)-Corporate Boundary

Howard, Babe
DB 139, Page 646

Airport
Subdivision
Ordinance 80-8
11.58 Acres, ±
PC 1-49

Ron Hub Subdivision
PC 1-84

KRS 81.045 (Filed 05/11/1981)

Smallwood, Talmadge
Smallwood, Mariam
DB 162, Page 336

P.O.B.
N 3838159.29
E 5469344.63
Kentucky State Plane
Single Zone, NAD 83
Latitude 37°50'55.1588" N
Longitude 83°51'05.6076" W

Earl Marcum
DB 91, Page 666

Stanton Airport

LEGEND

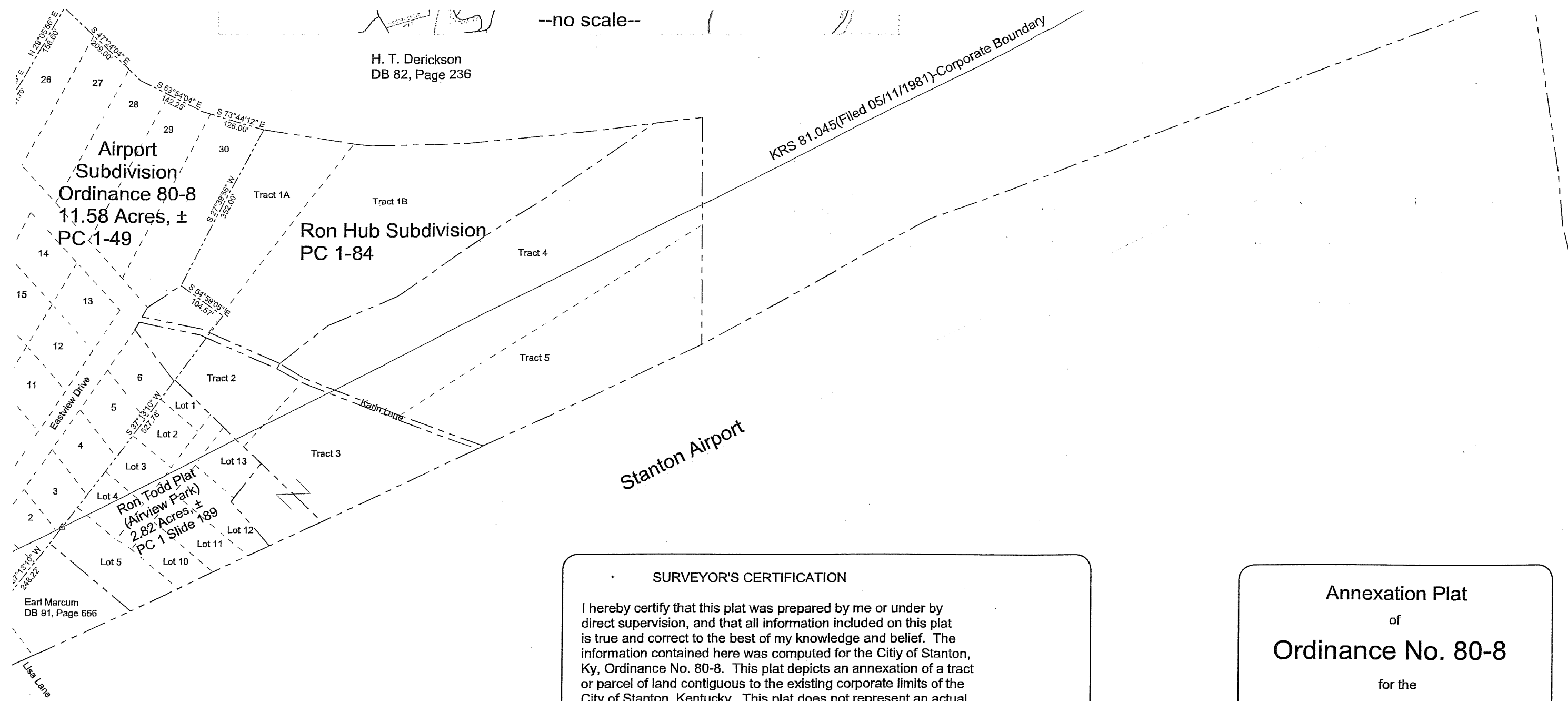
- P.O.B. = Point of Beginning
- Ordinance Line for 80-8 and/or Property Line
- Adjoiner Property Line
- Interior Tract and/or Lot Line
- Corporate Boundary from KRS 81.045 Filing Center Line

SURVEYOR'S CERTIFICATION

I hereby certify that this plat was prepared by me or under direct supervision, and that all information included on this plat is true and correct to the best of my knowledge and belief. The information contained here was computed for the City of Stanton, Kentucky, Ordinance No. 80-8. This plat depicts an annexation or parcel of land contiguous to the existing corporate limits of the City of Stanton, Kentucky. This plat does not represent a ground survey and is prepared for informational purposes only. No monuments were set or verified in preparation of this plat.

Rodney L. Hall
Signature

2841
PLS Number



H. T. Derickson
DB 82, Page 236

--no scale--

KRS 81.045 (Filed 05/11/1981) - Corporate Boundary

Airport Subdivision
Ordinance 80-8
11.58 Acres, ±
PC 1-49

Ron Hub Subdivision
PC 1-84

Ron Todd Plat
(Airview Park)
2.82 Acres, ±
PC 1 Slide 189

Stanton Airport

Earl Marcum
DB 91, Page 666

" N
'6" W

SURVEYOR'S CERTIFICATION

I hereby certify that this plat was prepared by me or under by direct supervision, and that all information included on this plat is true and correct to the best of my knowledge and belief. The information contained here was computed for the City of Stanton, Ky, Ordinance No. 80-8. This plat depicts an annexation of a tract or parcel of land contiguous to the existing corporate limits of the City of Stanton, Kentucky. This plat does not represent an actual survey on the ground and is prepared for informational purposes only. No monuments were set or verified in preparation of this plat.



Rodney A. Hall
Signature

2841
PLS Number

10/15/2012
Date

Annexation Plat
of
Ordinance No. 80-8
for the
City of Stanton

140 Court Street
Stanton, KY 40380
PH: (606)663-4459

Exhibit A

Hall Mapping Services, LLC
c/o Rodney A. Hall
1053 Frames Branch Road
Clay City, KY 40312-9624
PH: (606)663-8231

FILE NAME
ON80-8.TRV

SCALE 200 Ft/In	DATE 10-15-2012	DRAWN BY RAH
JOB 11-075	REVISION 2/1	SHEET 1/1