

RECEIVED AND FILED
DATE February 8, 2018

Ordinance 85-04
Airport Area

ALISON LUNDERGAN GOVERNOR
SECRETARY OF STATE
COMMONWEALTH OF KENTUCKY
BY Handie Altman

RESOLUTION NO. 12-012
CITY OF STANTON, KENTUCKY

**A RESOLUTION ADOPTING A MODERN AND ACCURATE
LEGAL DESCRIPTION OF TERRITORY PREVIOUSLY
ANNEXED BY ORDINANCE**

WHEREAS, the City of Stanton, Kentucky has enacted numerous ordinances annexing property into the corporate limits of the City of Stanton; and

WHEREAS, each individual annexation contains a prior survey often prepared by now unknown individual, and further references documentation that is no longer in existence; and

WHEREAS, the City of Stanton wishes to provide a modern, accurate, easily identifiable legal description reflecting bearings and coordinates based upon the state plane coordinate systems, including relevant GPS and GIS data, same having been certified by a professional land surveyor for each prior annexation; and

WHEREAS, the City of Stanton wishes to comply with the requirements of Amended KRS 81A.470 effective July 13, 2004; and


WHEREAS, the City of Stanton does not intend to amend or replace its prior ordinance annexing, but rather to interpret the defined boundaries of the territory previously annexed and adopt a modern and accurate legal description of territory previously annexed,

**NOW THEREFORE, BE IT RESOLVED BY THE CITY COUNCIL OF THE CITY
OF STANTON, KENTUCKY:**

SECTION 1. That the City Council of the City of Stanton, Kentucky hereby adopts the following legal description, and the plat attached hereto as prepared by


Rodney A. Hall, a Professional Land Surveyor No. 2841 by new survey as an accurate depiction of the property previously annexed into the corporate city limits of the City of Stanton by Ordinance 85-4 dated January 14, 1985, (a copy of which is attached hereto as "Exhibit A") and hereby adopts said new legal description, (attached hereto as "Exhibit B" and incorporated by reference into this Resolution), and the accompanying plat as the official legal description and plat to be adopted by the City for all purposes when referencing this prior annexation. See also Plat of record at Plat Cabinet 3, Slide _____, records of the Powell County Clerk's Office.

Motion made by Margarita Amet; seconded by Dixie Lockard.
The vote was 6 in favor; and 0 opposed, at the regular meeting of the City Council for the City of Stanton, held on the 12th day of July, 2012.



DALE ALLEN, Mayor
City of Stanton

ATTEST:



Stephanie Phillippe, City Clerk
City of Stanton

City Clerk's Certification

I, Stephanie A. Faulkner, City Clerk of the City of Stanton do hereby certify that, the forgoing Resolution No. 12-012 is a true, correct and complete copy duly adopted by the City Commission at a duly convened meeting held on 07/12/2012, all as appears in the official records of said City.

Given under my hand this 1st day of February, 2018.

Stephanie Faulkner

City Clerk

(SEAL)



Exhibit B

Deed Description

Ordinance No. 85-4

City of Stanton, KY

A certain Parcel of land adjoining the Airport in Stanton and contiguous to the City of Stanton, KY and previously known as Airview Park (now known as the Ronald Todd Subdivision in Plat Cabinet 1-189), being more particularly described as follows:

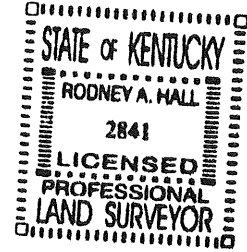
The POINT OF BEGINNING at Kentucky State Plane (NAD 83) Single Zone Coordinate of Northing=3838320.83 and Easting=5469910.02, said point being on the Stanton Airport Line and the southernmost corner of the Ron Hub Subdivision(PC 1-84); thence with the line of the Stanton Airport S 65°02'11" W, a distance of 306.82' to the corner of Earl Marcum Property and the Ronald Todd Subdivision; thence with the line of Marcum N 50°22'50" W, a distance of 209.53' to the line of the Airport Subdivision (PC1-49); thence with the line of the Airport Subdivision N 37°13'10" E, a distance of 40.18' to the existing City of Stanton Corporate Boundary Line (per KRS 81.045 Filing); thence leaving the City of Stanton Corporate Boundary and continuing with the line of the Airport Subdivision N 37°13'08" E, a distance of 368.17' to a marker at the corner of the Ron Hub Subdivision; thence S 46°32'28" E, a distance of 171.32' to the City of Stanton Corporate Boundary Line (per KRS 81.045 Filing); thence crossing the City of Stanton Corporate Boundary line S 46°32'28" E, a distance of 237.11' to the line of the Stanton Airport (also crossing Tract 3 of the Ron Hub Subdivision); thence with the line of the Stanton Airport S 65°02'11" W, a distance of 114.62'to the POINT OF BEGINNING; said described tract containing 2.82 Acres, more or less.

Statement of Resources

The Property described above was computed using survey information from a Map of Stanton prepared and certified by Blake Adams, PLS on 11/13/2005. Record PLATS from the Powell County Clerk's Office and the description contained in Ordinance No. 85-4 were also utilized.

Ordinance No. 85-4

Coordinates and Bearings are Kentucky State Plane (NAD 83) Single Zone. The P.O.B. Coordinate was derived from tying to the KRS 81.025 information available from the Kentucky Secretary of State's Mapping of City of Stanton, KY Corporate Boundary and available on the Internet at KYGEONET and/or the Kentucky Secretary of State's Website.



Rodney A. Hall
Signature

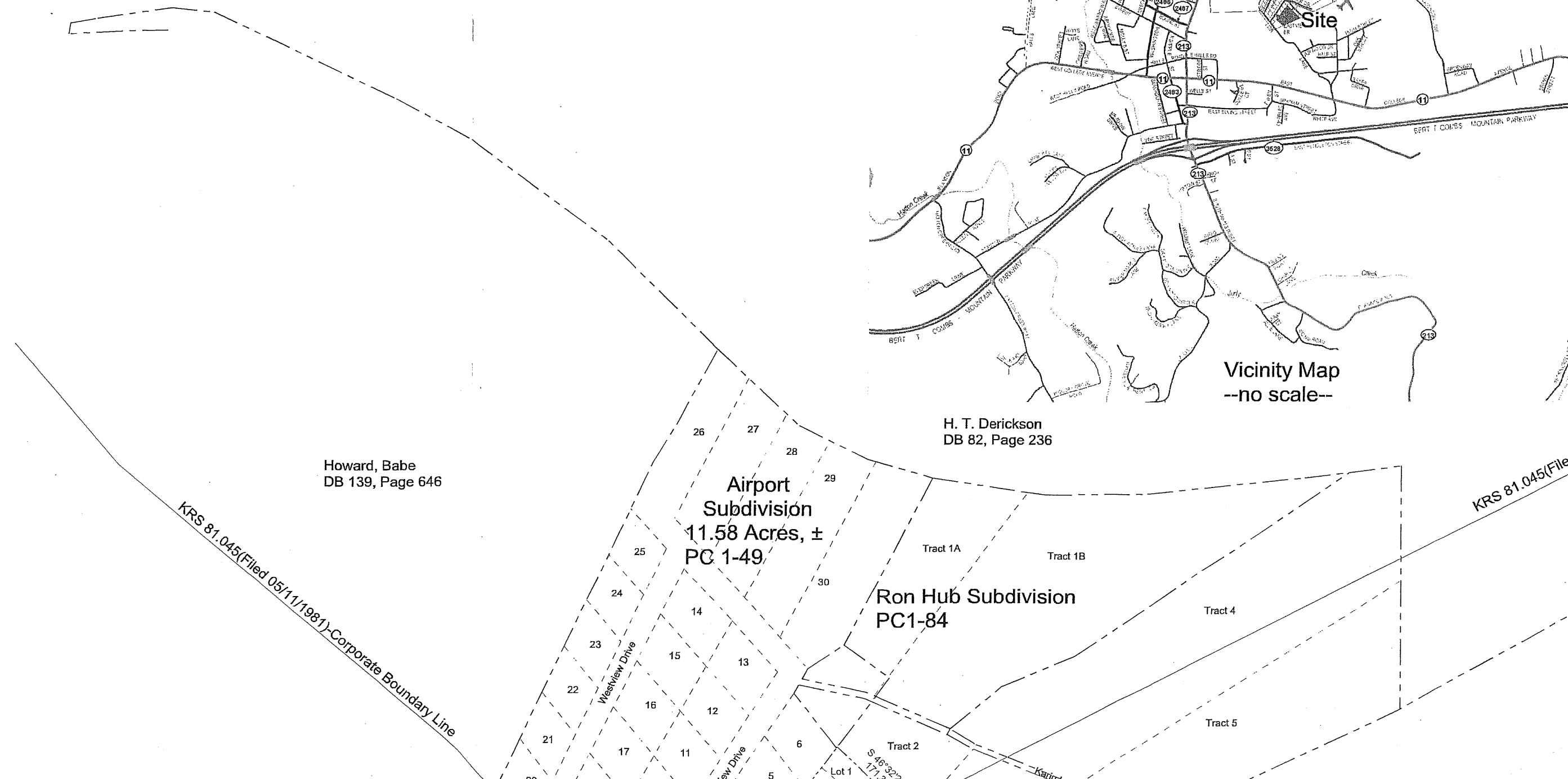
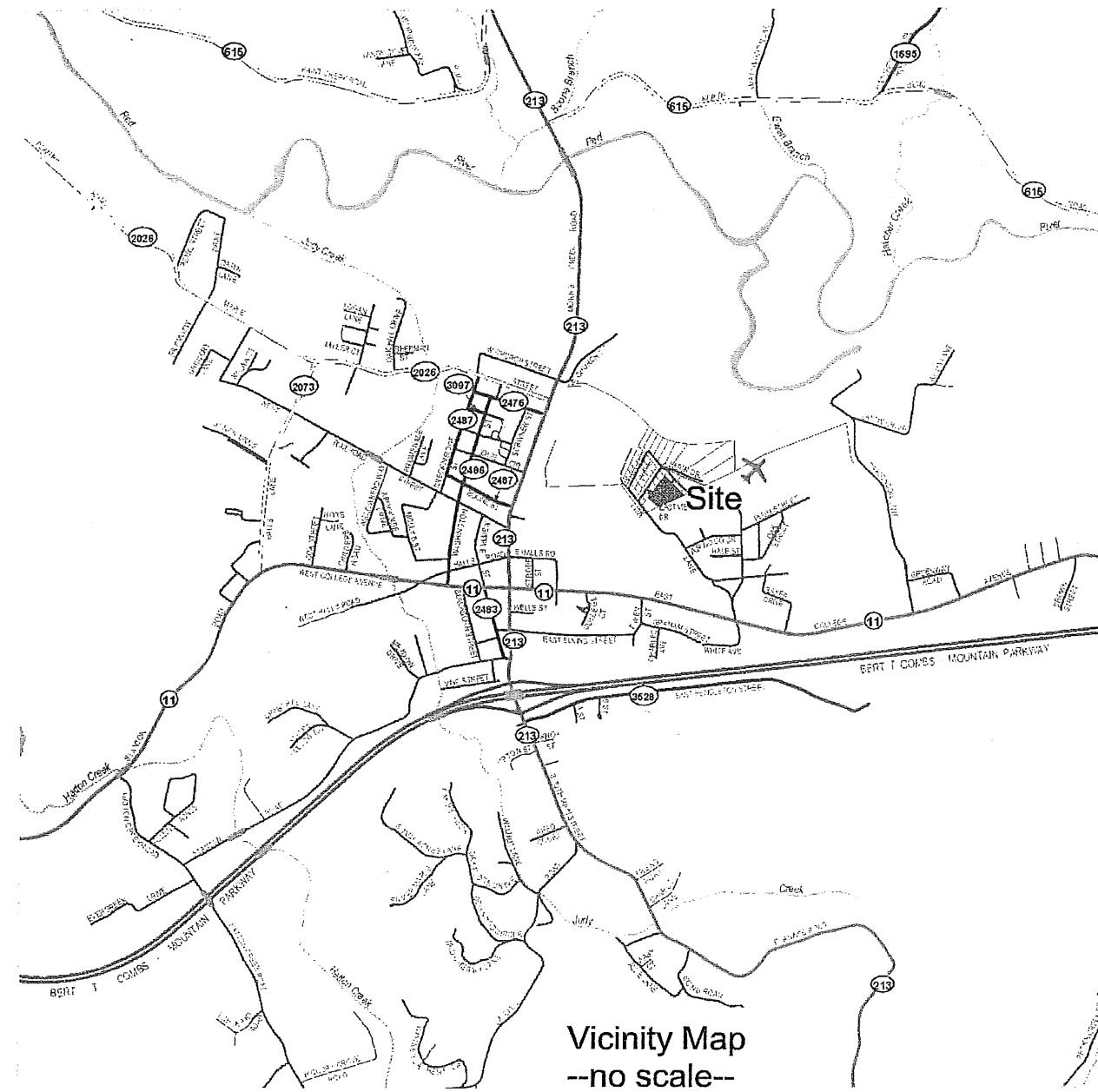
2841
PLS Number

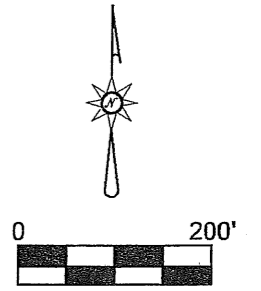
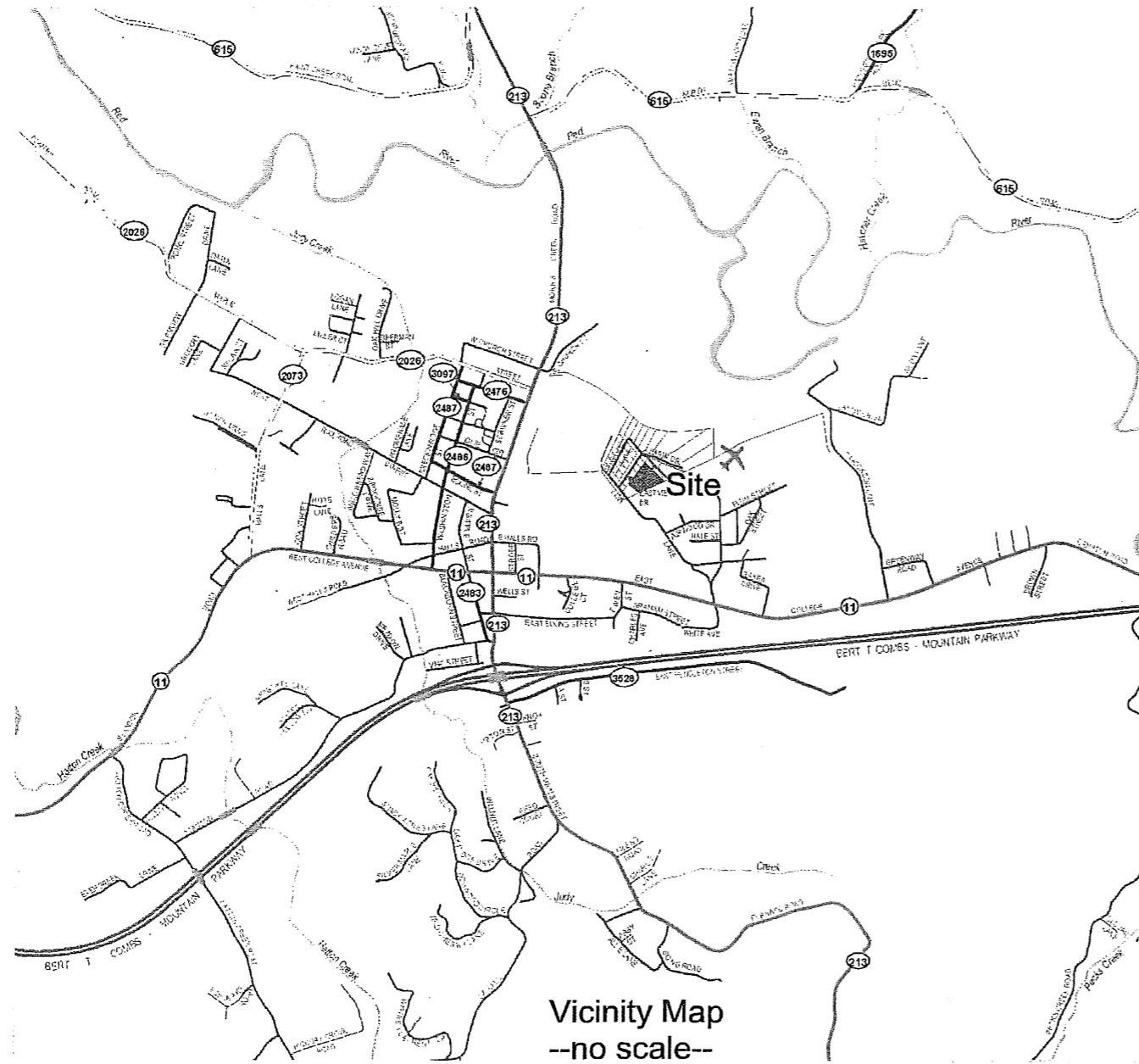
10/19/2012
Date

Statement of Resources

The Property described on this Plat was computed using survey information from a Map of Stanton prepared and certified by Blake Adams, PLS on 11/13/2005. Record PLATS from the Powell County Clerk's Office and the description contained in Ordinance No. 85-4 were also utilized.

Coordinates and Bearings are Kentucky State Plane (NAD 83) Single Zone. The P.O.B. Coordinate was derived from tying to the information available from the Kentucky Secretary of State's Mapping of City Corporate Boundaries in the state of Kentucky and available on the Internet at KYGEONET and/or the Kentucky Secretary of State's Website.





H. T. Derickson
DB 82, Page 236

Airport
Subdivision
11.58 Acres, ±
PC 1-49

Ron Hub Subdivision
PC1-84

KRS 81.045(Filed 05/11/1981)-Corporate Boundary Line

Tract 1A

Tract 1B

Tract 4

Tract 5

Tract 2

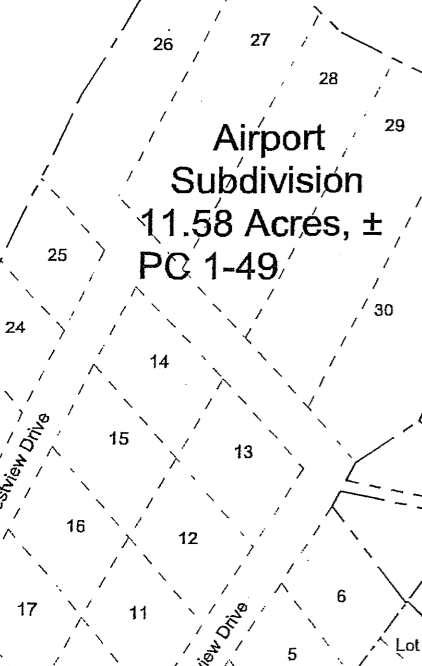
Lot 1

S 46°32'22"
171.25'

Karint

Westview Drive

New Drive



H. T. Derickson
DB 82, Page 236

Howard, Babe
DB 139, Page 646

Airport
Subdivision
11.58 Acres, ±
PC 1-49

Ron Hub Subdivision
PC1-84

Ordinance NO-85-4
Ron Todd Plat
(Airview Park)
2.82 Acres, ±
PC 1 Slide 189

Marcum, Earl
DB 91, Page 666

Smallwood, Talmadge
Smallwood, Mariam
DB 162, Page 336

KRS 81.045(Filed 05/11/1981)-Corporate Boundary Line

KRS 81.045(Filed 05/11/1981)

Stanton Airport

P.O.B.
N 3838320.83
E 5469910.02
Kentucky State Plane
Single Zone, NAD 83
Latitude 37°50'56.6418" N
Longitude 83°50'58.5184" W

LEGEND

P.O.B. = Point of Beginning

----- Ordinance Line for 85-4 and/or Property Line

----- Adjoiner Property Line

----- Interior Tract and/or Lot Line

----- Corporate Boundary-KRS 81.045 per 95/11/1981 Filing

----- Center Line

SURVEYOR'S CERTIFICATION

I hereby certify that this plat was prepared under my direct supervision, and that all information is true and correct to the best of my knowledge and belief. This plat depicts a parcel of land contiguous to the existing City of Stanton, Kentucky. This plat does not depict a survey on the ground and is prepared for informational purposes only. No monuments were set or verified.

Rodney A. Hall
Signature

